

STATE OF ILLINOIS  
DEPARTMENT OF TRANSPORTATION  
DIVISION OF HIGHWAYS

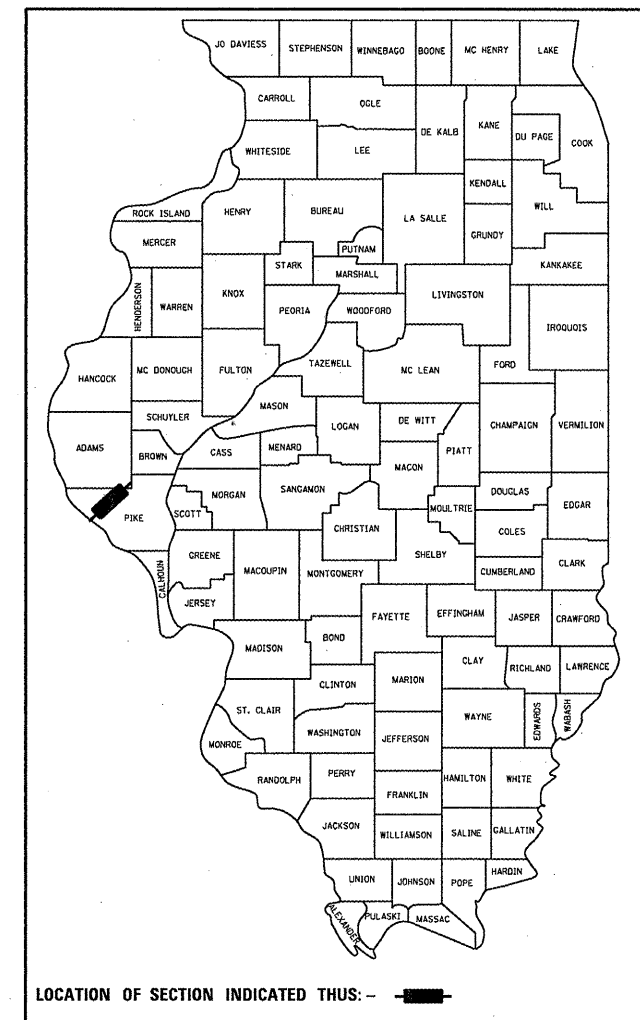
**PROPOSED  
HIGHWAY PLANS**

FAI 72 (I-72)  
SECTION 75-2 I  
PROJECT IM-072-1(082)013  
I-72 SLOPE STABILIZATION  
PIKE COUNTY

C-96-008-10

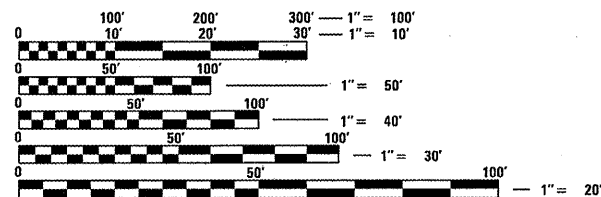
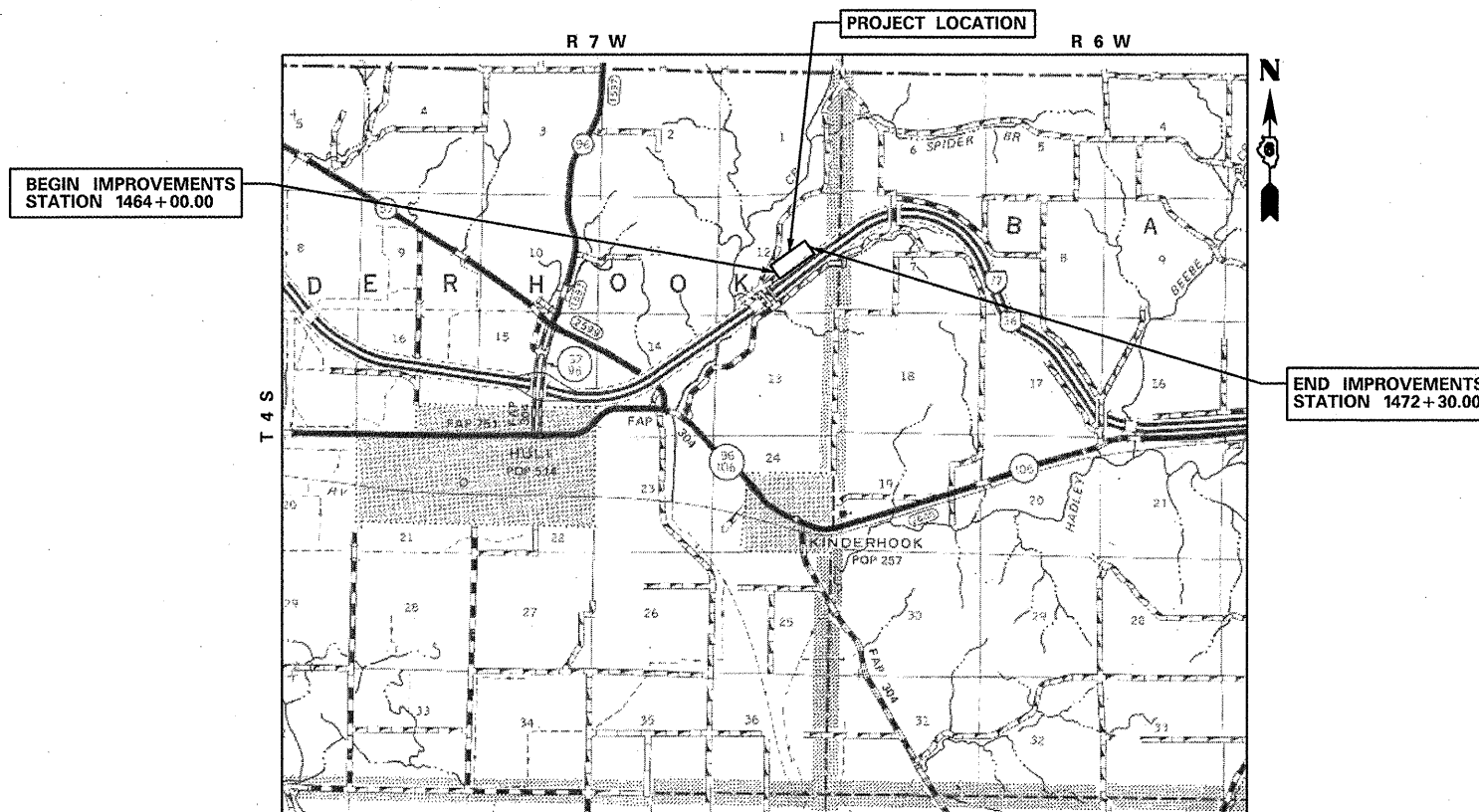
F.A.I. RTE.	SECTION	COUNTY	TOTAL SHEETS	SHEET NO.
72	75-2 I	PIKE	32	1
		ILLINOIS	CONTRACT NO. 72D74	

D-96-008-10



FOR INDEX OF SHEETS, SEE SHEET NO.

FAI 72 (I-72)  
FUNCTION CLASS - INTERSTATE  
ADT (2011) - 5,300  
SU (2011) - 199  
MU (2011) - 1,550  
PV (2011) - 3,551



FULL SIZE PLANS HAVE BEEN PREPARED USING STANDARD ENGINEERING SCALES. REDUCED SIZED PLANS WILL NOT CONFORM TO STANDARD SCALES. IN MAKING MEASUREMENTS ON REDUCED PLANS, THE ABOVE SCALES MAY BE USED.

J.U.L.I.E.  
JOINT UTILITY LOCATION INFORMATION FOR EXCAVATION  
1-800-892-0123  
OR 811

SENIOR TEAM ENGINEER: VINCE MADONIA (217) 785-9046  
TEAM ENGINEER: VICTOR YOUNG (217) 785-0597

GROSS LENGTH = 830 FT. = 0.157 MILE  
NET LENGTH = 830 FT. = 0.157 MILE

CONTRACT NO. 72D74

STATE OF ILLINOIS  
DEPARTMENT OF TRANSPORTATION  
DIVISION OF HIGHWAYS

SUBMITTED Oct 29 20 11  
Rg 2 D-1  
DEPUTY DIRECTOR OF HIGHWAYS, REGION ENGINEER

December 9 20 11  
Scott E. Stitt, P.E. lsr  
ENGINEER OF DESIGN AND ENVIRONMENT

acting  
December 9 20 11  
William R. Frey lsr  
DIRECTOR OF HIGHWAYS, CHIEF ENGINEER

**PRINTED BY THE AUTHORITY  
OF THE STATE OF ILLINOIS**