

F.A.P. RTE.	SECTION	COUNTY	TOTAL SHEETS	SHEET NO.
757	20RS-7	PIKE	39	1
		ILLINOIS	CONTRACT NO. 72D78	

INDEX OF SHEETS

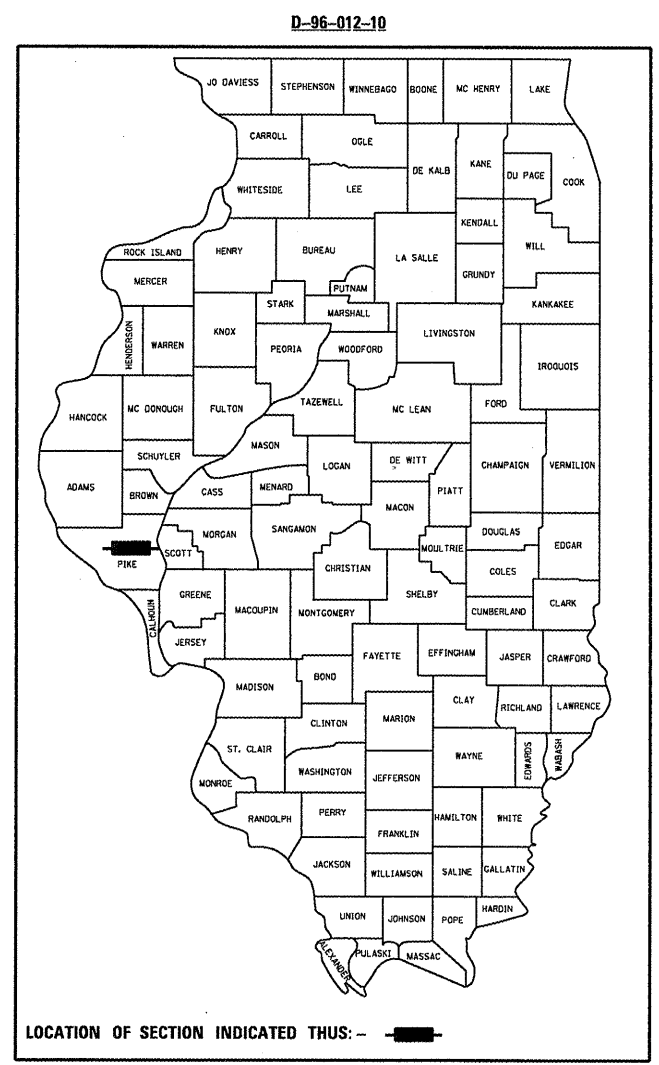
- 1: COVER SHEET
- 2: GENERAL NOTES
- 3: SUMMARY OF QUANTITIES
- 4-6: TYPICAL SECTION MAP
- 7-10: TYPICAL SECTIONS
- 11-13: SCHEDULE OF QUANTITIES
- 14-32: PLAN SHEETS
- 33-34: ENTRANCE AND SIDEROAD DETAILS
- 35: ENTRANCE SCHEDULE
- 36-38: PROJECT DETAILS
- 39: SUPERELEVATION TRANSITION DETAILS

STATE OF ILLINOIS
DEPARTMENT OF TRANSPORTATION
DIVISION OF HIGHWAYS
PROPOSED
HIGHWAY PLANS

F.A.P. ROUTE 757 (IL 106)
SECTION 20RS-7
(3P) RESURFACING
PIKE COUNTY
PROJECT F-0757(009)

HIGHWAY STANDARDS

- 000001-06
- 442201-03
- 701001-02
- 701006-03
- 701011-02
- 701201-04
- 701301-04
- 701306-03
- 701311-03
- 701501-05
- 701901-01
- 780001-02
- 781001-03



ADT: 1,600
MU: 8.0%
SU: 6.0%
PV: 86%

STATE OF ILLINOIS
DEPARTMENT OF TRANSPORTATION
DIVISION OF HIGHWAYS

SUBMITTED October 20, 2011
Th. J. Dill
DEPUTY DIRECTOR OF HIGHWAYS, REGION ENGINEER

December 9, 2011
Scott E. Still, P.E.
Acting ENGINEER OF DESIGN AND ENVIRONMENT

December 9, 2011
William R. Frey, Jr.
DIRECTOR OF HIGHWAYS, CHIEF ENGINEER

PRINTED BY THE AUTHORITY
OF THE STATE OF ILLINOIS

STATION EQUATION 3
STA 237+34.46 BK =
STA 237+73.04 AH

STATION EQUATION 5
STA 92+00.00 BK =
STA 357+93.02 AH

STATION EQUATION 1
STA 203+18.62 BK =
STA 203+52.42 AH

PROJECT ENDS
STA 97+30.87

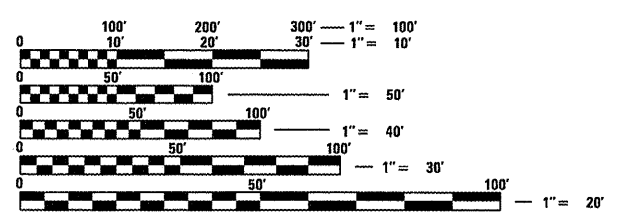
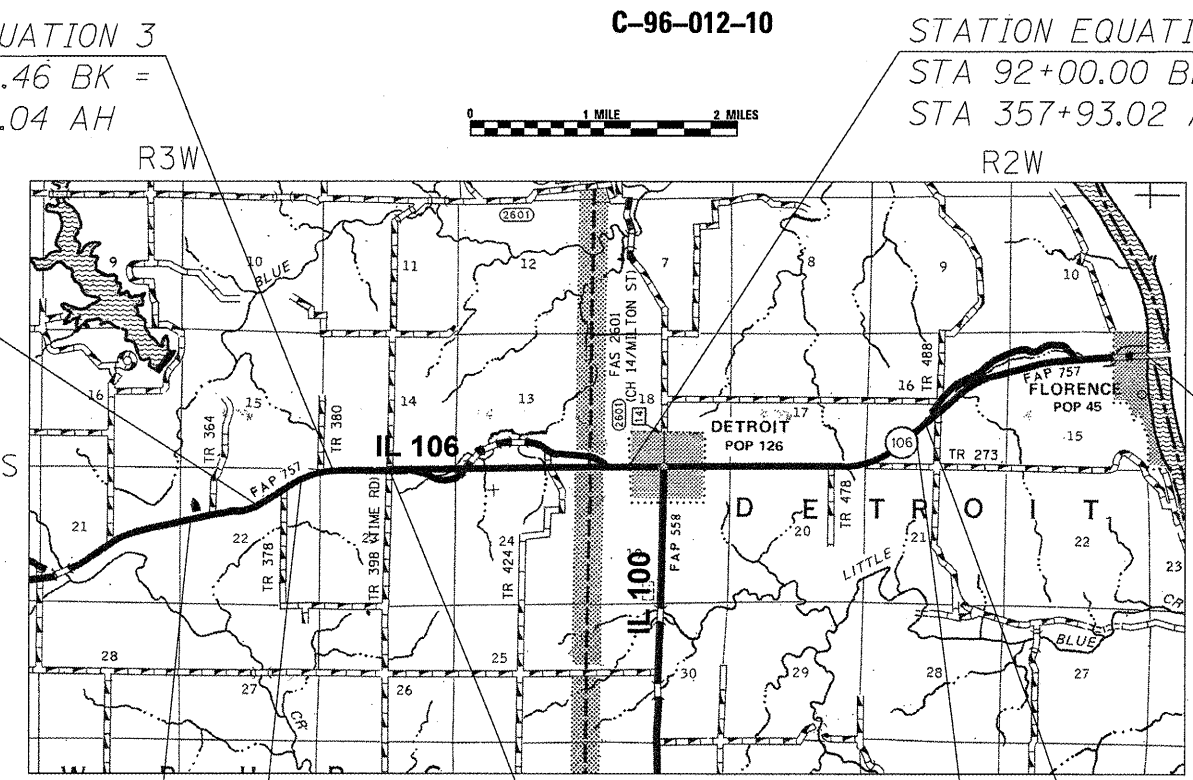
PROJECT BEGINS
STA 175+00.00

STATION EQUATION 4
STA 258+59.30 BK =
STA 0+00.00 AH

STATION EQUATION 7
STA 470+81.02 BK =
STA 0+00.00 AH

STATION EQUATION 2
STA 210+02.00 BK =
STA 210+00.00 AH

STATION EQUATION 6
STA 459+49.01 BK =
STA 460+20.60 AH



FULL SIZE PLANS HAVE BEEN PREPARED USING STANDARD ENGINEERING SCALES. REDUCED SIZED PLANS WILL NOT CONFORM TO STANDARD SCALES. IN MAKING MEASUREMENTS ON REDUCED PLANS, THE ABOVE SCALES MAY BE USED.

J.U.L.I.E.
JOINT UTILITY LOCATION INFORMATION FOR EXCAVATION
1-800-892-0123
OR 811

PROJECT ENGINEER: JEFF MYERS (217) 782-4761
TEAM ENGINEER: MARCUS BRUCE (217) 524-0946

CONTRACT NO. 72D78

GROSS LENGTH = 39,523.51 FT. = 7.49 MILE
NET LENGTH = 39,523.51 FT. = 7.49 MILE