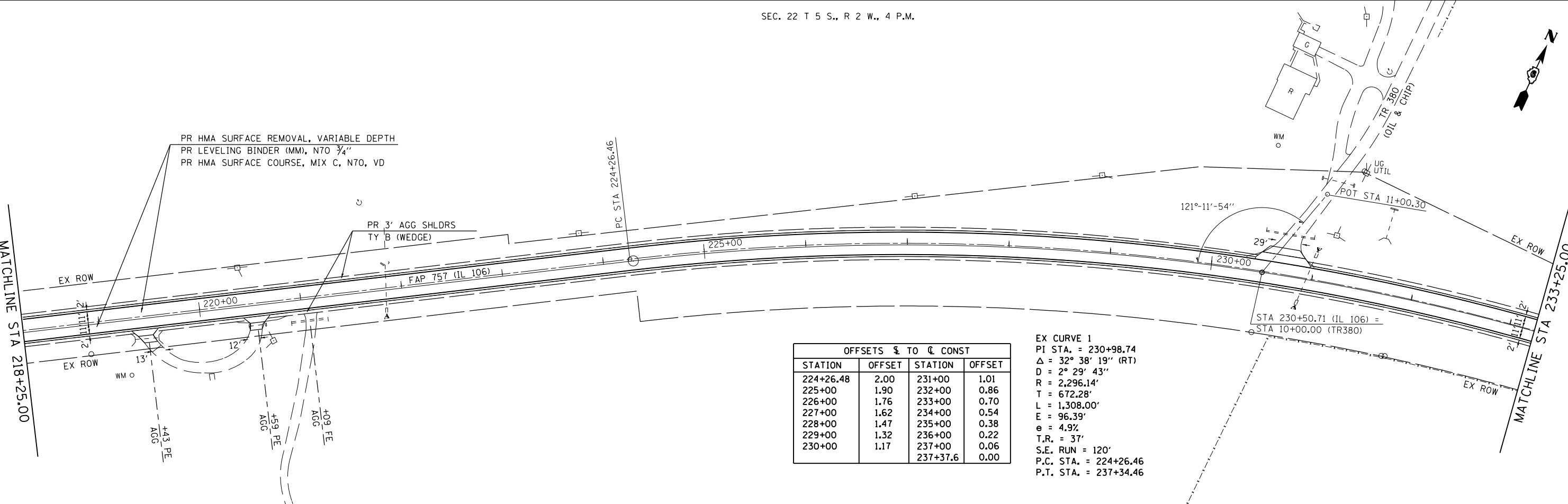


THE HMA SHOULDERS SHALL BE PAVED MONOLITHICALLY WITH THE HMA SURFACE COURSE WHERE SPECIFIED AS SURFACE MIX.

SEE ENTRANCE DETAIL AND SCHEDULES FOR ADDITIONAL INFORMATION



OFFSETS \$ TO C CONST			
STATION	OFFSET	STATION	OFFSET
224+26.48	2.00	231+00	1.01
225+00	1.90	232+00	0.86
226+00	1.76	233+00	0.70
227+00	1.62	234+00	0.54
228+00	1.47	235+00	0.38
229+00	1.32	236+00	0.22
230+00	1.17	237+00	0.06
		237+37.6	0.00

EX CURVE 1
 PI STA. = 230+98.74
 $\Delta = 32^\circ 38' 19''$ (RT)
 $D = 2^\circ 29' 43''$
 $R = 2,296.14'$
 $T = 672.28'$
 $L = 1,308.00'$
 $E = 96.39'$
 $e = 4.9\%$
 $T.R. = 37'$
 $S.E. RUN = 120'$
 $P.C. STA. = 224+26.46$
 $P.T. STA. = 237+34.46$

FILE NAME =	USER NAME = sparksgw	DESIGNED - DMS	REVISED -
c:\pwwork\pwwork\sparksgw\10222140\0672078-plan50w.dgn		DRAWN - DMS	REVISED -
PLOT SCALE = 100.0000' / in.		CHECKED -	REVISED -
PLOT DATE = Oct-20-2011 03:27:51PM		DATE -	REVISED -

STATE OF ILLINOIS
 DEPARTMENT OF TRANSPORTATION

FAP 757 (IL 106) PLAN SHEET
 50 SCALE

SCALE: 50 SHEET NO. OF SHEETS STA. 203+00 TO STA. 233+25

F.A.P. R.E.	SECTION	COUNTY	TOTAL SHEETS	SHEET NO.
757	20R5-7	PIKE	39	15
CONTRACT NO. 72D78			ILLINOIS FED. AID PROJECT	