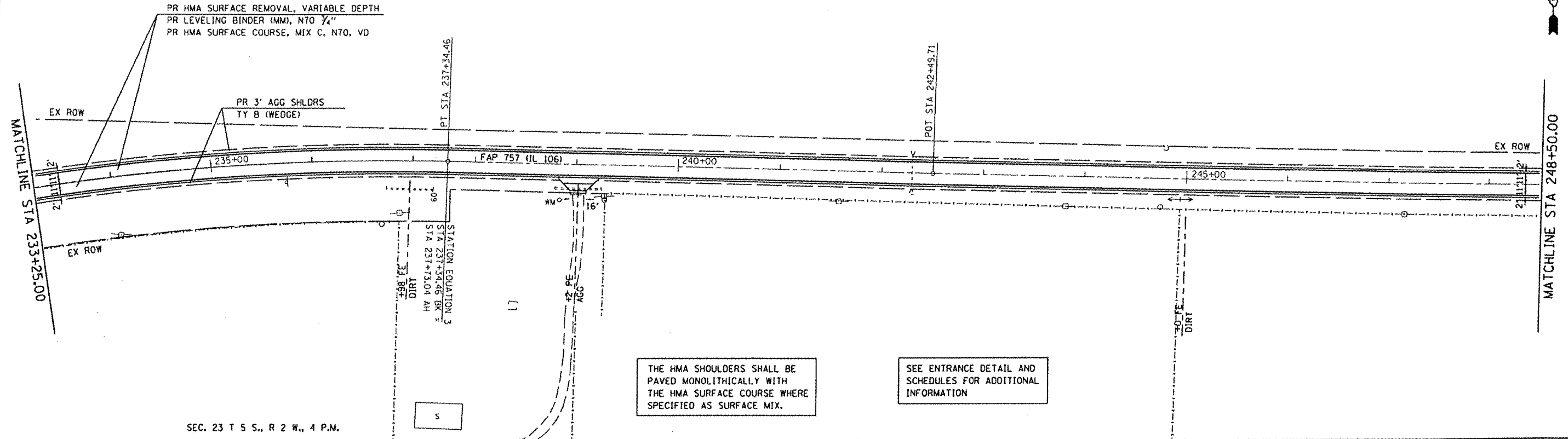


SEC. 14 T 5 S., R 2 W., 4 P.M.

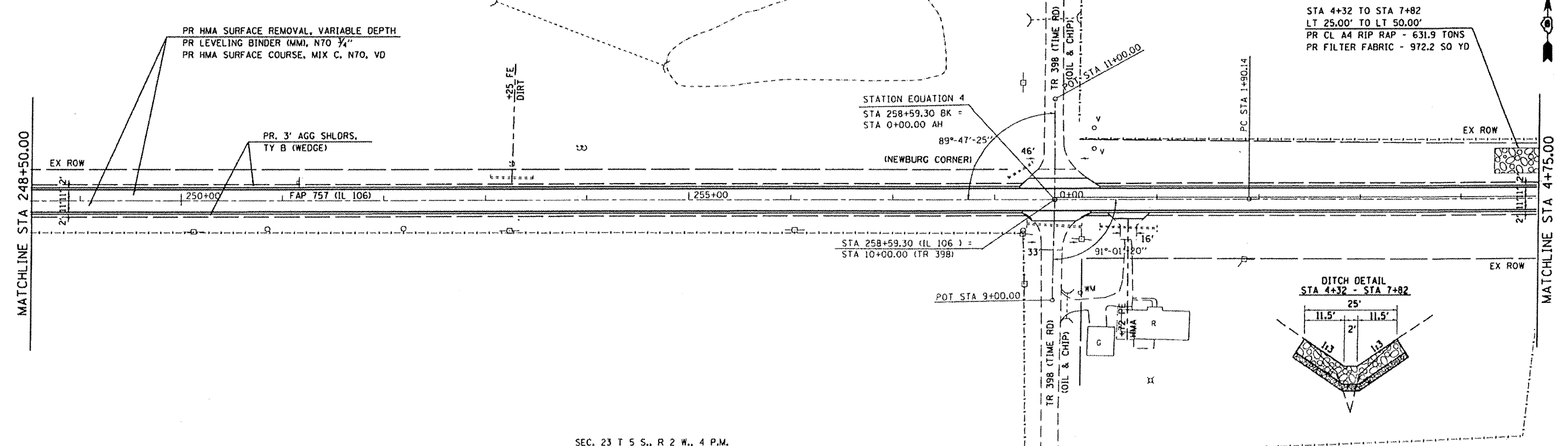


SEC. 23 T 5 S., R 2 W., 4 P.M.

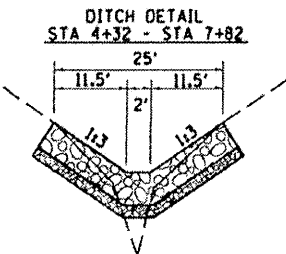
THE HMA SHOULDERS SHALL BE PAVED MONOLITHICALLY WITH THE HMA SURFACE COURSE WHERE SPECIFIED AS SURFACE MIX.

SEE ENTRANCE DETAIL AND SCHEDULES FOR ADDITIONAL INFORMATION

SEC. 14 T 5 S., R 2 W., 4 P.M.



STA 4+32 TO STA 7+82
 LT 25.00' TO LT 50.00'
 PR CL A4 RIP RAP - 631.9 TONS
 PR FILTER FABRIC - 972.2 SQ YD



SEC. 23 T 5 S., R 2 W., 4 P.M.

FILE NAME : c:\pwork\pds\stephensondm\0222148	USER NAME : stephensondm	DESIGNED - DMS	REVISED -
0672078-plan58.dgn		DRAWN - DMS	REVISED -
PLOT SCALE : 1/8"=1'-0"		CHECKED -	REVISED -
PLOT DATE : Nov-17-2011 11:28:14AM		DATE -	REVISED -

STATE OF ILLINOIS
 DEPARTMENT OF TRANSPORTATION

FAP 757 (IL 106) PLAN SHEET
 50 SCALE

SCALE: 50 SHEET NO. OF SHEETS STA. 233+25 TO STA. 4+75

F.A.P. RIE. 757	SECTION 20RS-7	COUNTY PIKE	TOTAL SHEETS 39	SHEET NO. 16
CONTRACT NO. 72D78			ILLINOIS FED. AID PROJECT	