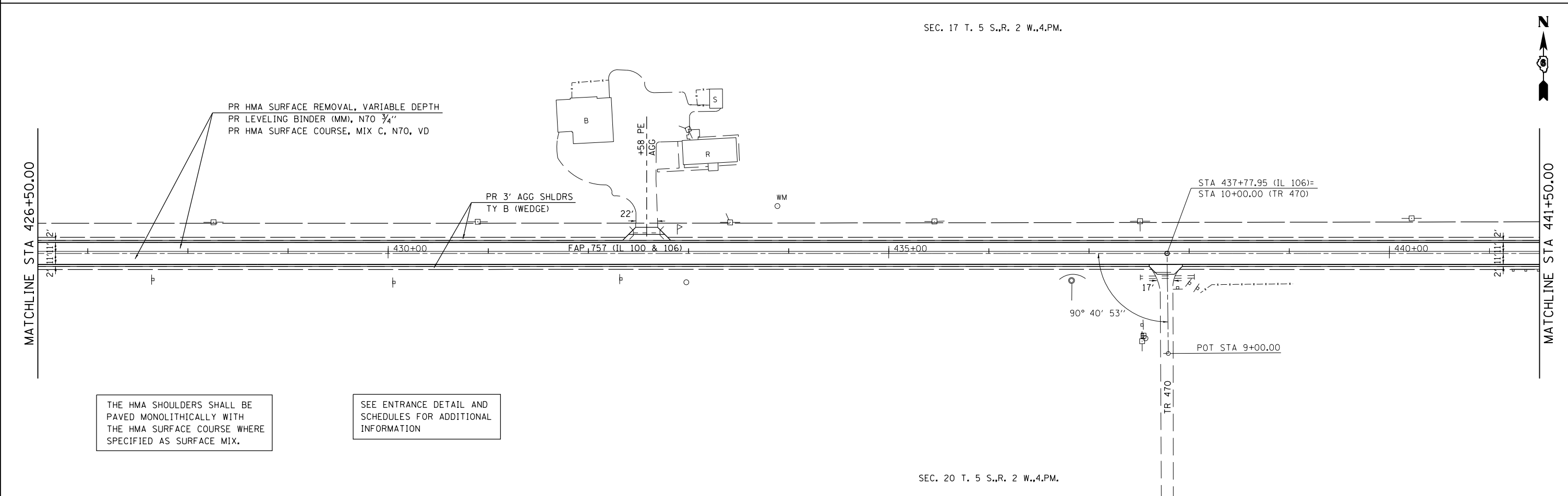


EX CURVE 19
 PI STA. = 424+62.49
 $\Delta = 2^\circ 22' 07''$ (LT)
 $D = 1^\circ 00' 55''$
 $R = 5,643.56'$
 $T = 116.67'$
 $L = 233.30'$
 $E = 1.21'$
 $e = \text{NORMAL CROWN}$
 $T.R. = \text{-----}$
 $S.E. \text{ RUN} = \text{-----}$
 $P.C. \text{ STA.} = 423+45.83$
 $P.T. \text{ STA.} = 425+79.13$

THE HMA SHOULDERS SHALL BE PAVED MONOLITHICALLY WITH THE HMA SURFACE COURSE WHERE SPECIFIED AS SURFACE MIX.

SEE ENTRANCE DETAIL AND SCHEDULES FOR ADDITIONAL INFORMATION



THE HMA SHOULDERS SHALL BE PAVED MONOLITHICALLY WITH THE HMA SURFACE COURSE WHERE SPECIFIED AS SURFACE MIX.

SEE ENTRANCE DETAIL AND SCHEDULES FOR ADDITIONAL INFORMATION

FILE NAME =	USER NAME = sparksgw	DESIGNED - DMS	REVISED -	STATE OF ILLINOIS DEPARTMENT OF TRANSPORTATION	FAP 757 (IL 106) PLAN SHEET			F.A.P. RTE. = 757	SECTION = 20R5-7	COUNTY = PIKE	TOTAL SHEETS = 39	SHEET NO. = 27
ei:\pw\work\p\idot\sparksgw\0222140\0672078-plan50e.dgn		DRAWN - DMS	REVISED -		50 SCALE			CONTRACT NO. 72D78				
	PLOT SCALE = 100.0000' / in.	CHECKED -	REVISED -		SCALE: 1" = 50'			ILLINOIS FED. AID PROJECT				
	PLOT DATE = Oct-20-2011 03:28:11PM	DATE -	REVISED -		SHEET NO. OF SHEETS STA. 411+50 TO STA. 441+50							