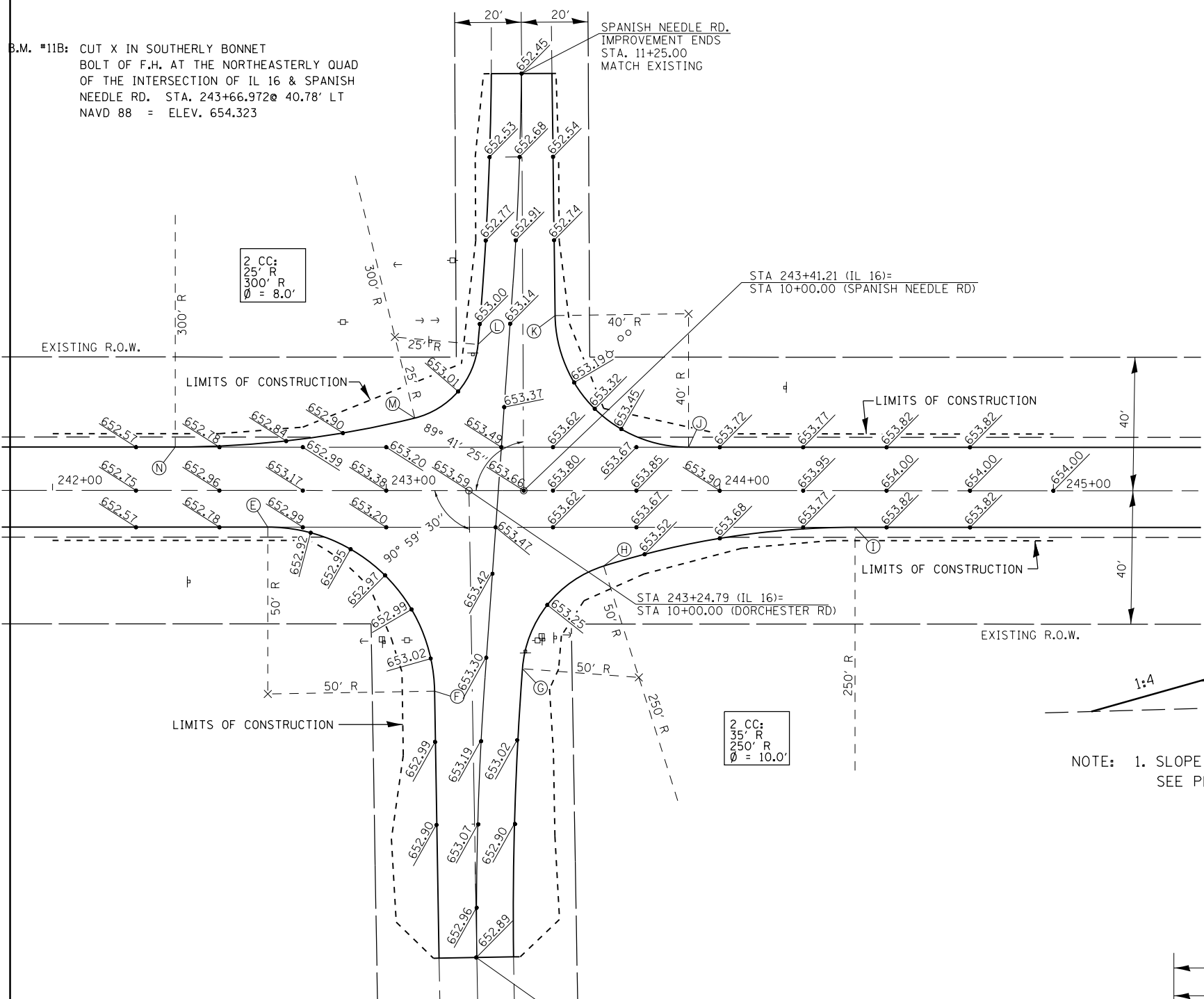
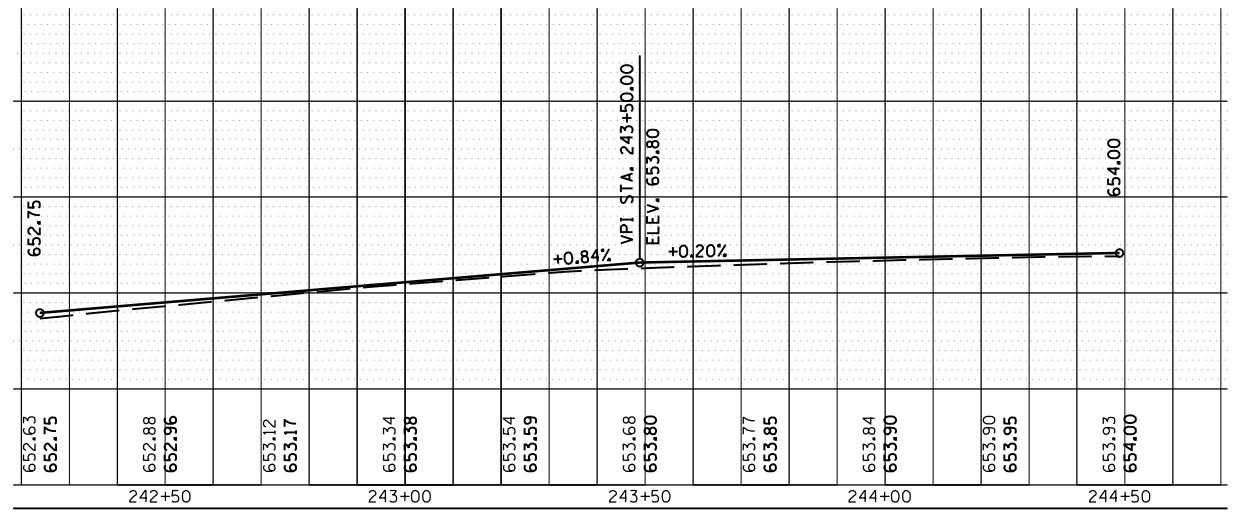


B.M. *11B: CUT X IN SOUTHERLY BONNET
 BOLT OF F.H. AT THE NORTHEASTERLY QUAD
 OF THE INTERSECTION OF IL 16 & SPANISH
 NEEDLE RD. STA. 243+66.972 @ 40.78' LT
 NAVD 88 = ELEV. 654.323

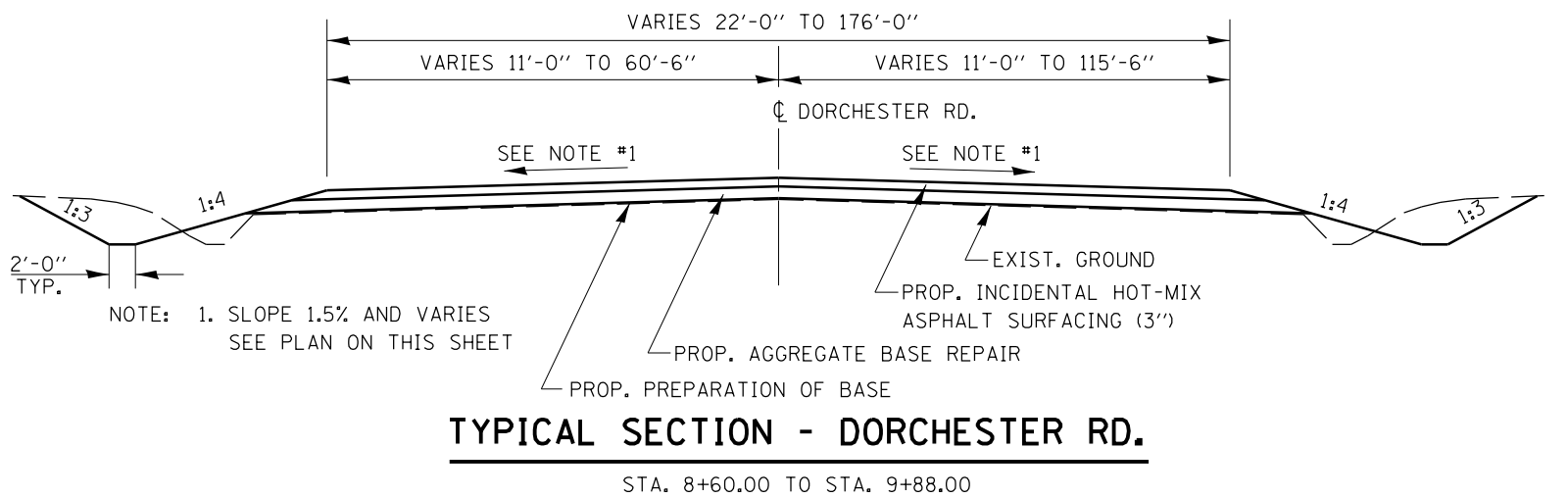
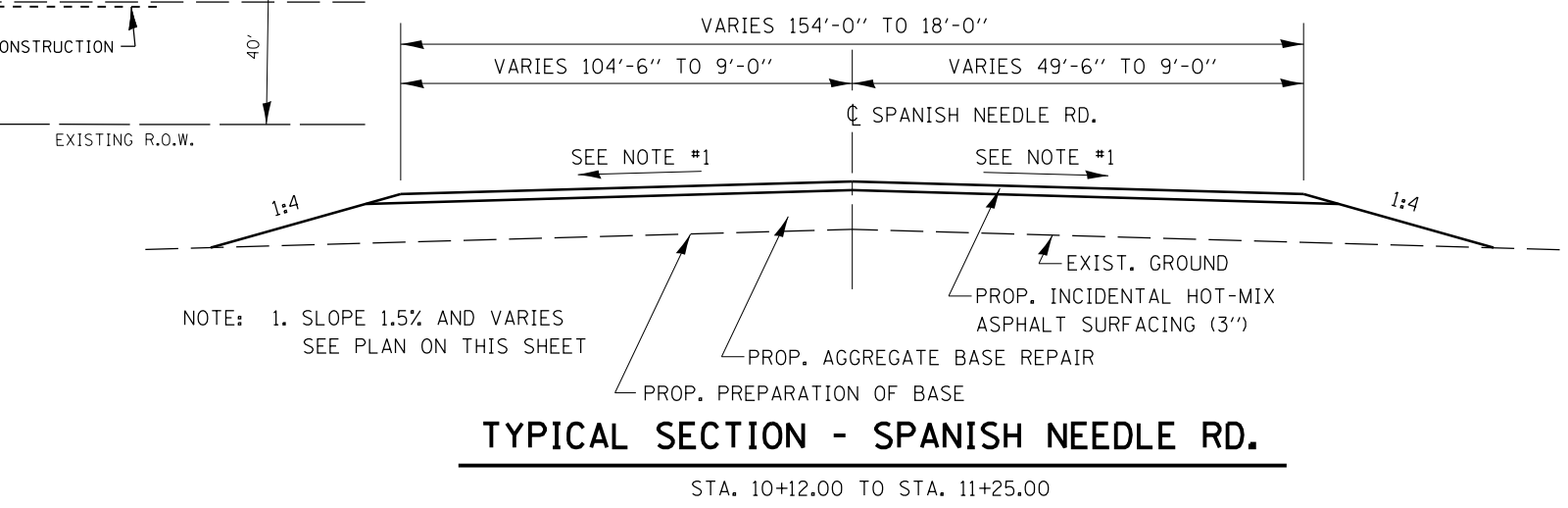


- Ⓔ STA. 242+64.52, 11.00' RT., ELEV. 652.90
- Ⓚ STA. 9+40.05, 11.32' LT., ELEV. 653.04
- Ⓘ STA. 9+46.32, 15.13' RT., ELEV. 653.12
- Ⓛ STA. 243+65.20, 22.63' RT., ELEV. 653.39
- Ⓜ STA. 244+40.56, 11.00' RT., ELEV. 653.80
- Ⓝ STA. 243+90.61, 13.00' LT., ELEV. 653.70
- Ⓟ STA. 10+52.41, 9.69' RT., ELEV. 652.94
- Ⓛ STA. 10+43.83, 13.49' LT., ELEV. 653.06
- Ⓜ STA. 243+08.57, 21.73' LT., ELEV. 652.96
- Ⓝ STA. 242+36.74, 13.00' LT., ELEV. 652.67

PLAN



PROFILE IL 16



FILE NAME =	USER NAME = sparksgw	DESIGNED -	REVISED -	STATE OF ILLINOIS DEPARTMENT OF TRANSPORTATION	DORCHESTER /SPANISH NEEDLE RD INTERSECTION DETAIL			F.A.P. RTE.	SECTION	COUNTY	TOTAL SHEETS	SHEET NO.
ei:\pw\work\p\idot\sparksgw\10264305\067	BE47-sht-details.dgn	DRAWN -	REVISED -					325	14 RS-5	MACOUPIN	70	26
	PLOT SCALE = 40.0000' / in.	CHECKED -	REVISED -					CONTRACT NO. 72E47				
	PLOT DATE = Nov-01-2011 04:19:32PM	DATE -	REVISED -					ILLINOIS FED. AID PROJECT				
				SCALE:	SHEET NO.	OF SHEETS	STA.	TO STA.				