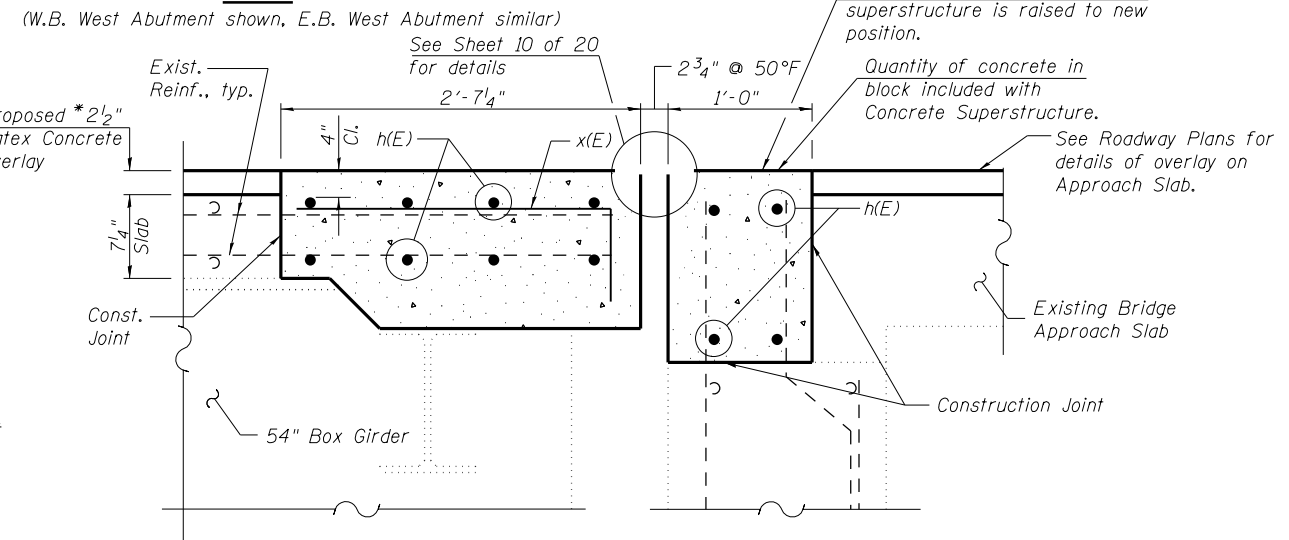


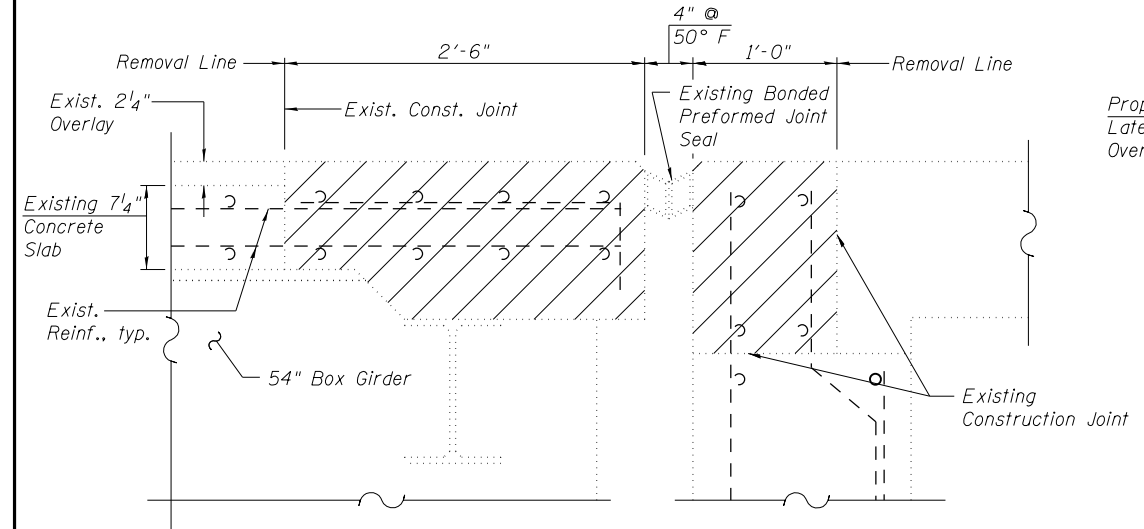
MIN. BAR LAP
*6 bars = 3'-0"

PLAN



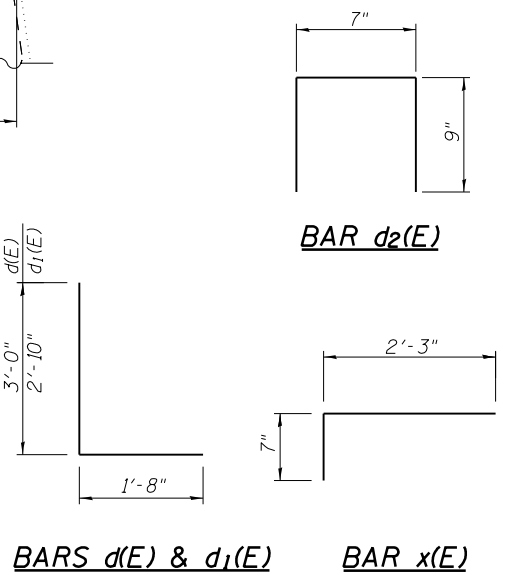
SECTION THRU PROPOSED ABUTMENT

(Dimensions at Rt. L's)



SECTION THRU EXISTING ABUTMENT

(Dimensions at Rt. L's)



BILL OF MATERIAL

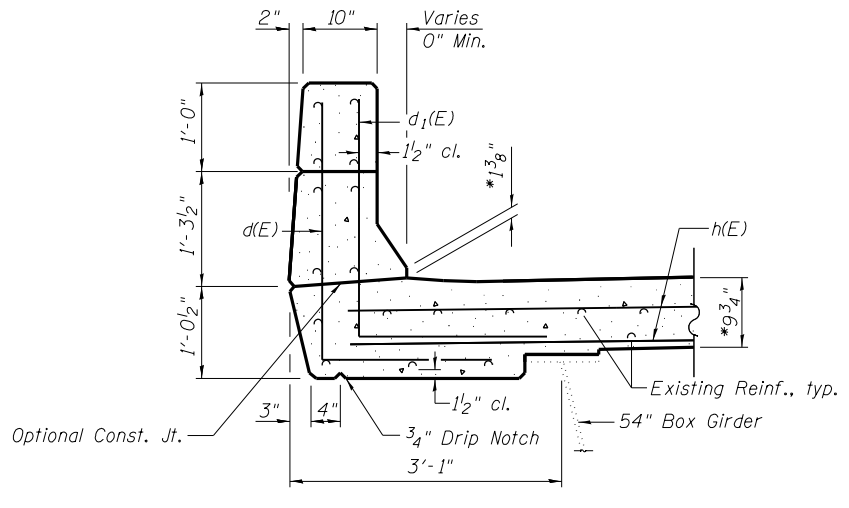
(Two Abutments)

Bar	No.	Size	Length	Shape
h(E)	48	#6	22'-2"	—
d(E)	12	#5	4'-8"	L
d1(E)	12	#5	4'-6"	L
d2(E)	8	#5	2'-1"	□
x(E)	80	#5	2'-10"	—
Reinforcement Bars, Epoxy Coated			Pound	1970
Concrete Superstructure			Cu. Yd.	14.0

Bars indicated thus 4x2-#6 etc. indicates 4 lines of bars with 2 lengths per line.

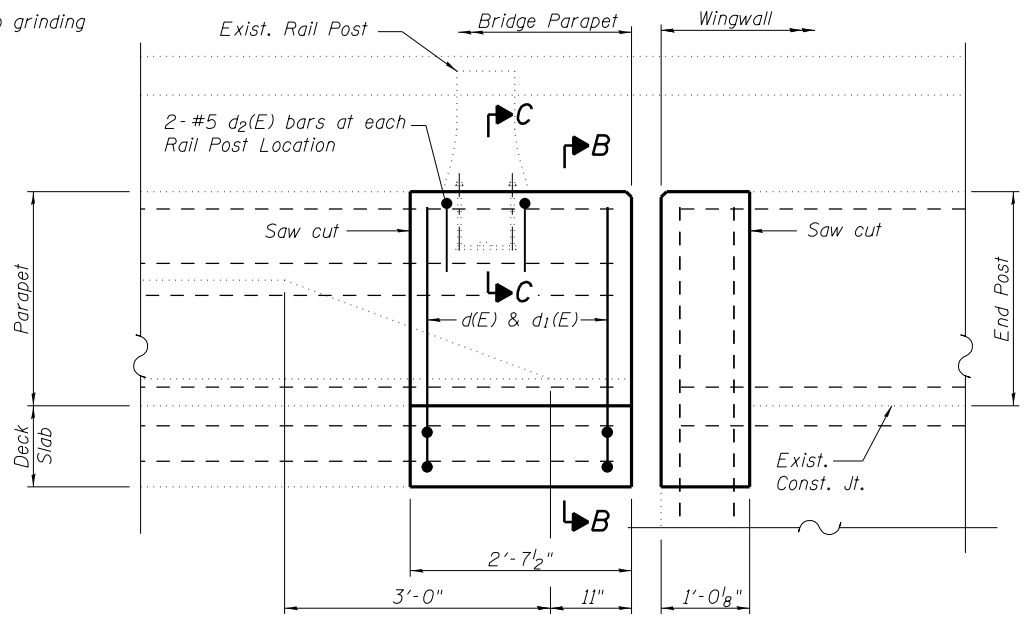
Notes:

- Hatched area indicates concrete removal. Perimeter of concrete removal areas shall be saw cut 3/4" prior to removal of the concrete.
- Existing reinforcement bars in the concrete removal area extending into new construction shall be cleaned and incorporated into the new construction. Cost included with Concrete Removal.
- Any reinforcement bars that are damaged during concrete removal operations shall be repaired or replaced using an approved bar splicer or anchorage system, in accordance with IDOT Standard Specifications Article 501.03. Cost included in "Concrete Removal"
- Overlay removal is included in pay item Bridge Deck Scarification, 2 1/4".
- Removal of the existing joint system is included with Concrete Removal.
- See Sheet 2 of 20 for Section C-C.



SECTION B-B

*prior to grinding



VIEW A-A



USER NAME =	DESIGNED - ESH	REVISED -
FILE NAME =	CHECKED - MTH	REVISED -
PLOT SCALE =	DRAWN - ESH	REVISED -
PLOT DATE =	CHECKED - MTH	REVISED -

STATE OF ILLINOIS
DEPARTMENT OF TRANSPORTATION

JOINT REPLACEMENT DETAILS AT WEST ABUTMENTS
STRUCTURE NOS. 084-0152 & 084-0153

SHEET NO. 7 OF 20 SHEETS

F.A.I. RTE.	SECTION	COUNTY	TOTAL SHEETS	SHEET NO.
72	(84-10-1)BDR	SANGAMON	35	21
CONTRACT NO. 72F01				

ILLINOIS FED. AID PROJECT