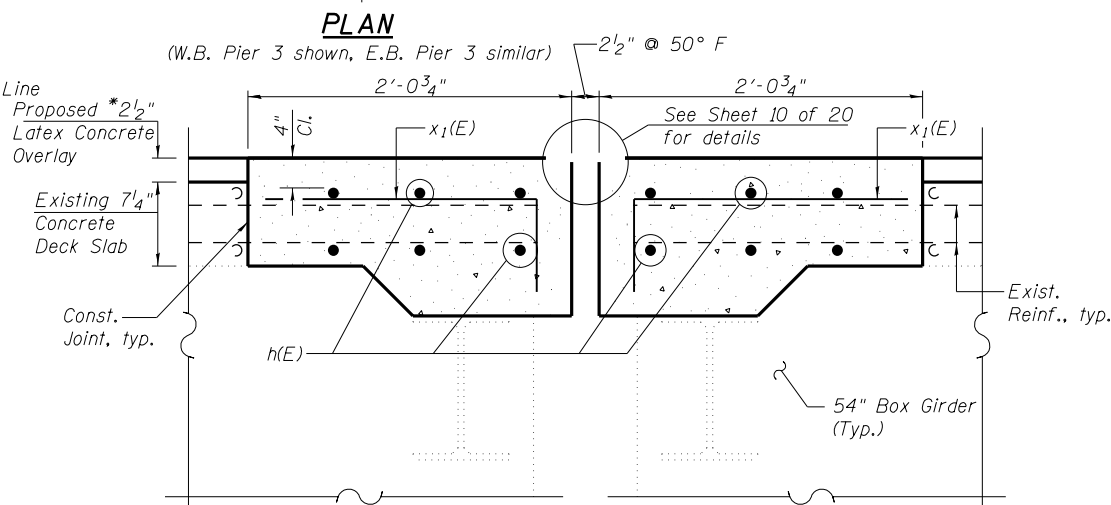
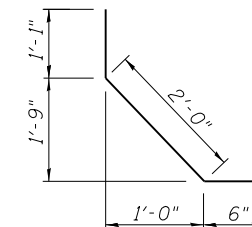


SECTION AT EXISTING PIER 3
(Dimensions at Rt. L's)

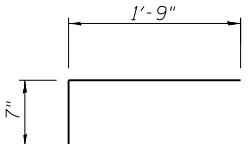


SECTION AT PROPOSED PIER 3
(Dimensions at Rt. L's)

*prior to grinding



BAR d3(E)

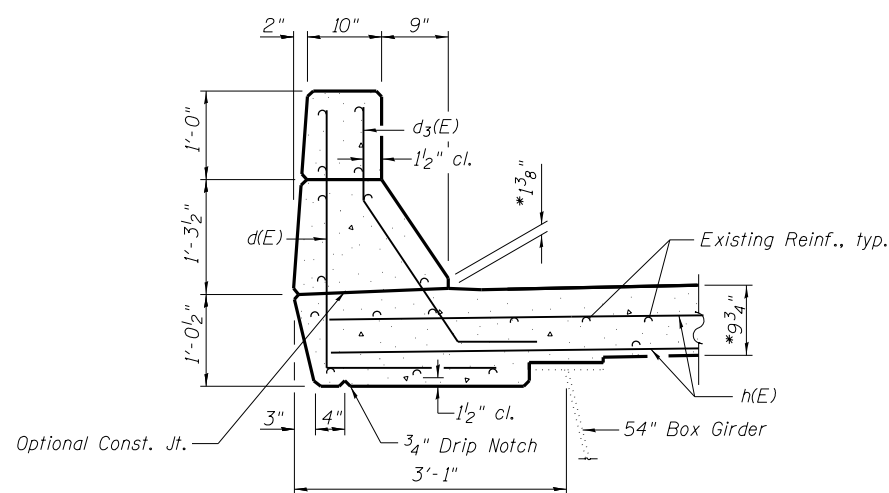


BAR x1(E)

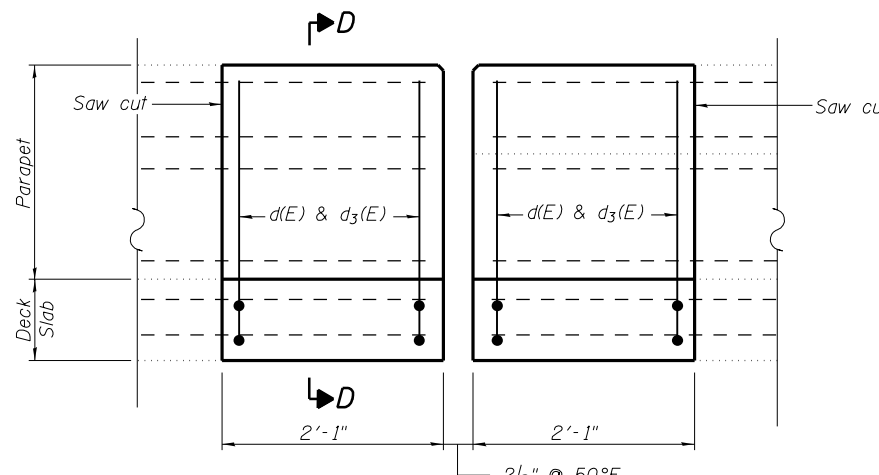
BILL OF MATERIAL
(Two Piers)

Bar	No.	Size	Length	Shape
h(E)	48	#6	22'-2"	—
d(E)	24	#5	4'-8"	L
d3(E)	24	#5	3'-7"	⌋
x1(E)	160	#5	2'-4"	—
Reinforcement Bars, Epoxy Coated			Pound	2200
Concrete Superstructure			Cu. Yd.	11.9

Bars indicated thus 3x2- #6 etc. indicates 3 lines of bars with 2 lengths per line.



SECTION D-D



VIEW C-C

Notes:

- Hatched area indicates concrete removal. Perimeter of concrete removal areas shall be saw cut 3/4" prior to removal of the concrete.
- Existing reinforcement bars in the concrete removal area extending into new construction shall be cleaned and incorporated into the new construction. Cost included with Concrete Removal.
- Any reinforcement bars that are damaged during concrete removal operations shall be repaired or replaced using an approved bar splicer or anchorage system, in accordance with IDOT Standard Specifications Article 501.03. Cost included in "Concrete Removal"
- Overlay removal is included in pay item Bridge Deck Scarification, 2 1/4".
- Removal of the existing joint system is included with Concrete Removal.
- See Sheet 7 of 20 for additional bar bend details.