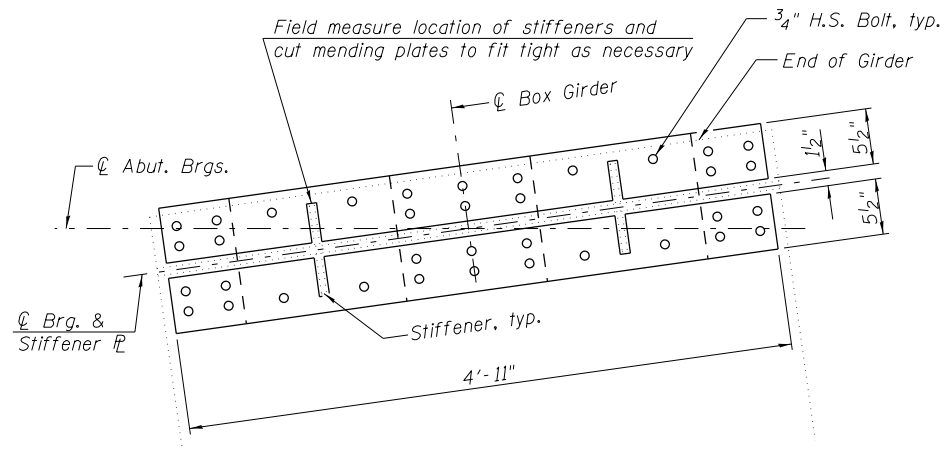
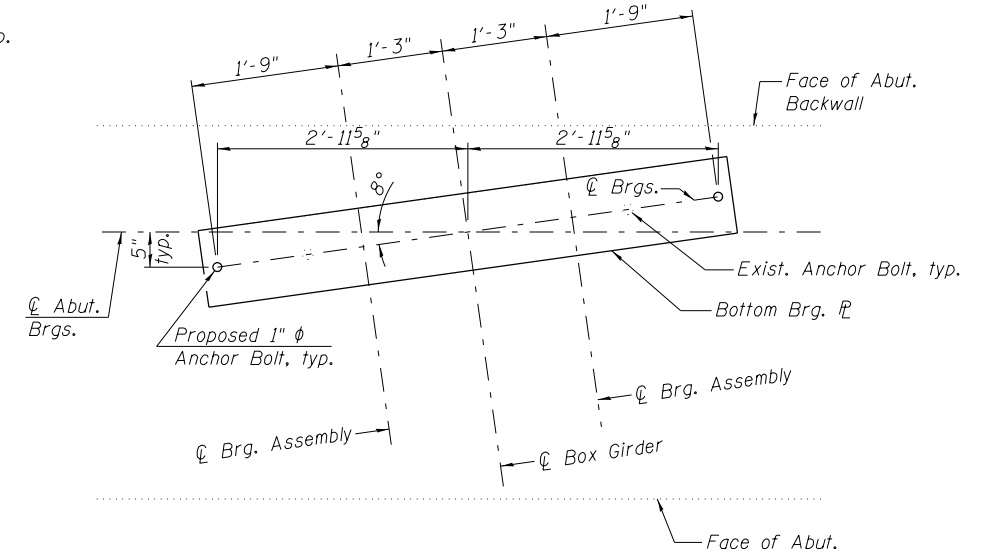


PLAN OF 1/2" TOP PLATE
(Abutments)



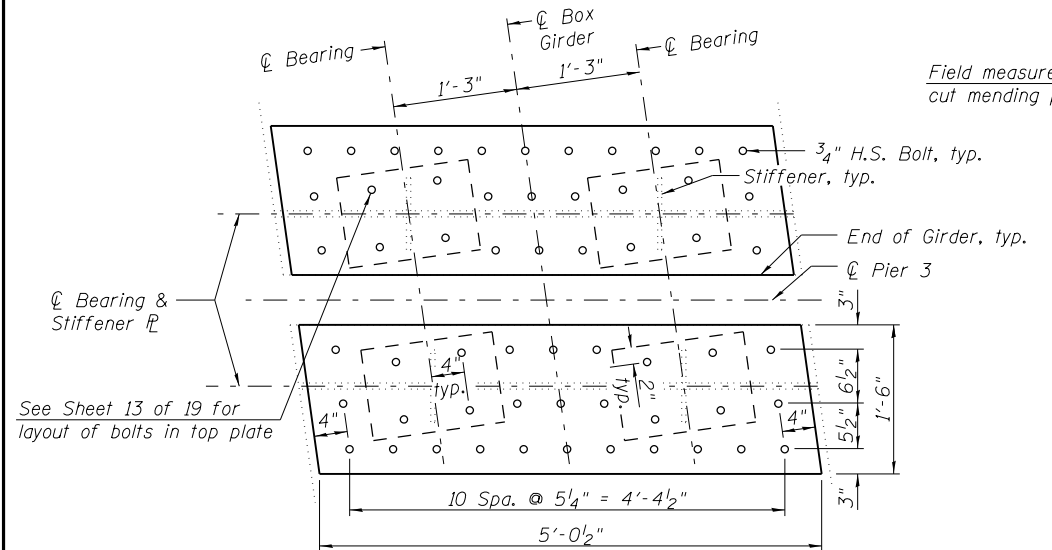
PLAN OF 1/2" MENDING PLATES
(Abutments)



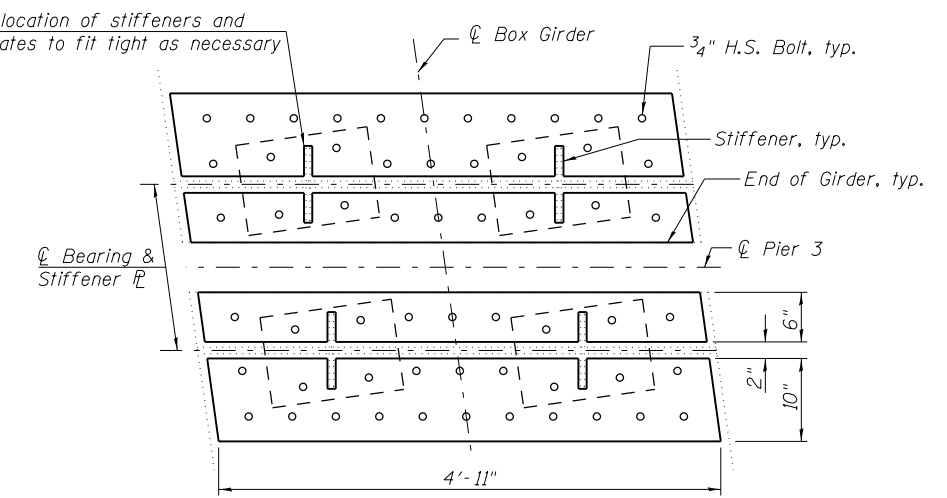
BOTTOM PLATE & ANCHOR BOLT LAYOUT
(Abutments)

BILL OF MATERIAL

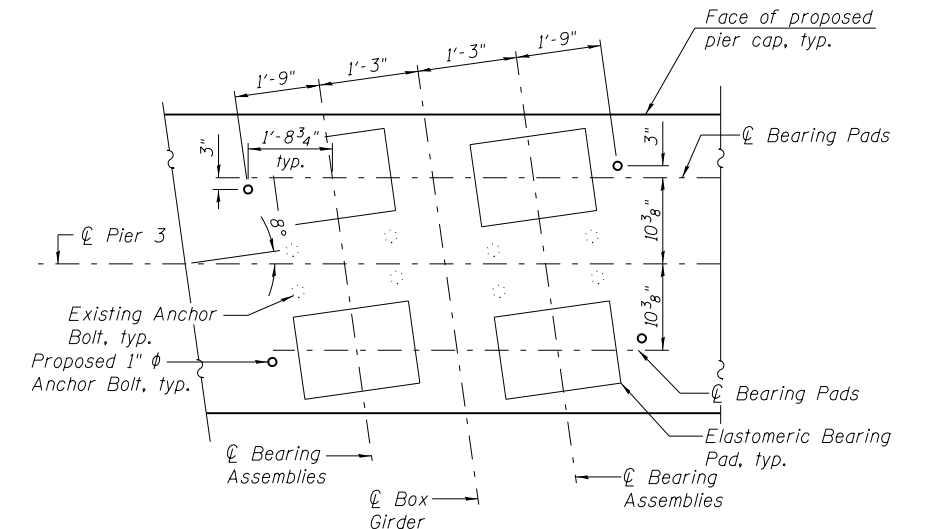
Item	Unit	Total
Structural Steel Repair	Pound	3600



PLAN OF 1/2" TOP PLATE
(Pier 3)



PLAN OF 1/2" MENDING PLATES
(Pier 3)



BEARING PAD & ANCHOR BOLT LAYOUT
(Pier 3)