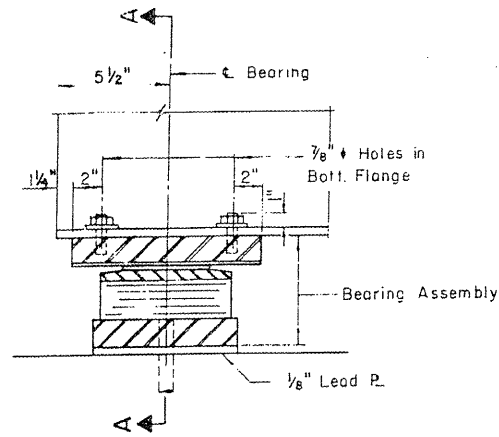
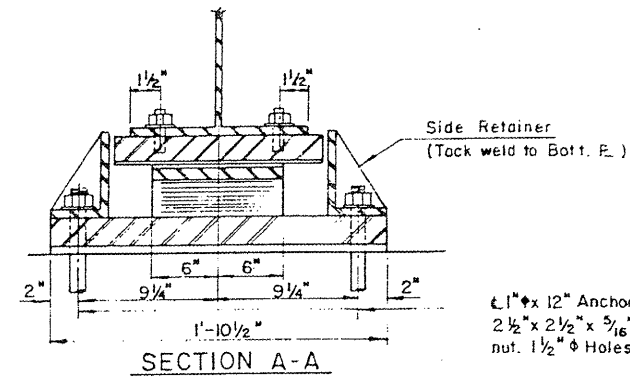


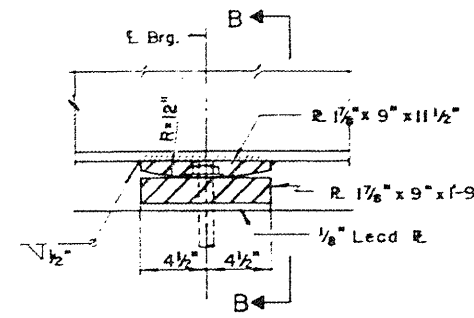
PROJECT NO.	SECTION	DATE	BY	CHKD
FA 34	2 BR	REWARD	57	20
SHEET 14 OF 35				



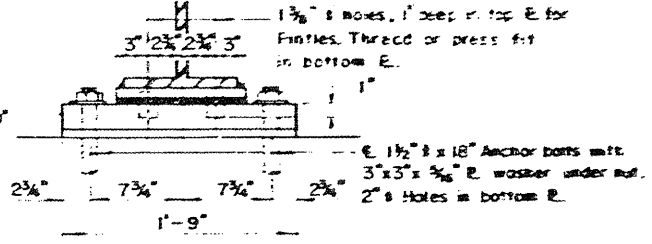
SECTION AT N. ABUT.
BENT 4 & PIER 7 N. BRG.



1" x 12" Anchor bolts with
2 1/2" x 2 1/2" x 3/16" R washer under
nut. 1 1/2" Holes in bottom P.



SECTION AT BENTS
2,3,5&6

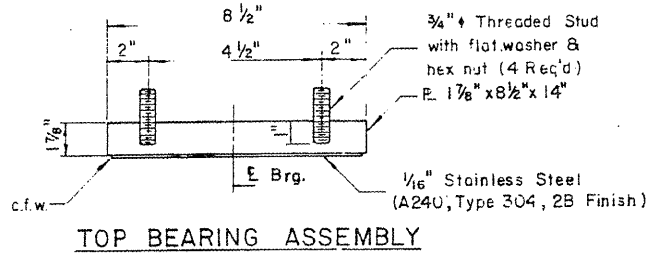


SECTION B-B

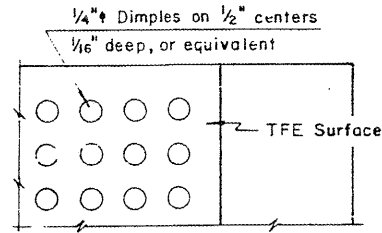
FIXED BEARING

TYPE II TFE ELASTOMERIC EXP. BRG.

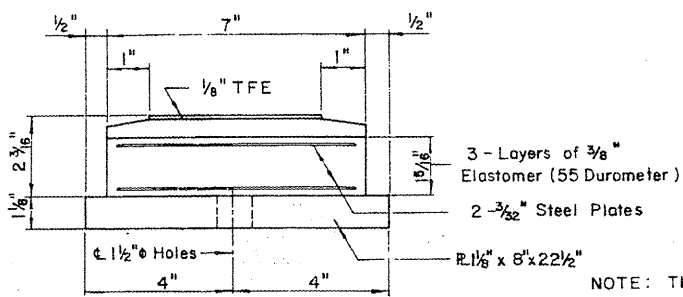
Note: After girders have been erected holes at expansion bearings shall be drilled and anchor bolts grouted in place. Anchor bolts at fixed bearings may be built into the masonry.



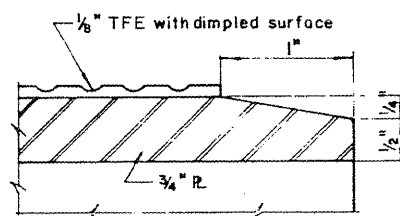
TOP BEARING ASSEMBLY



PLAN - TFE SURFACE

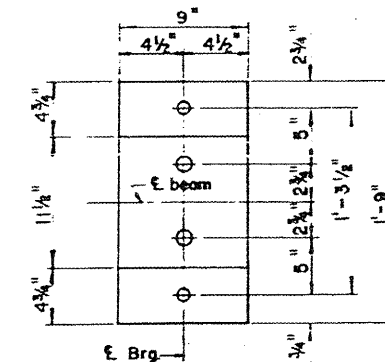


BOTTOM BEARING ASSEMBLY

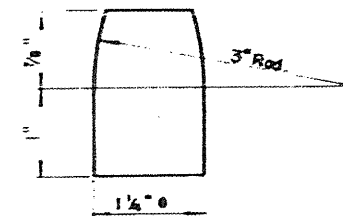


SECTION THRU TFE

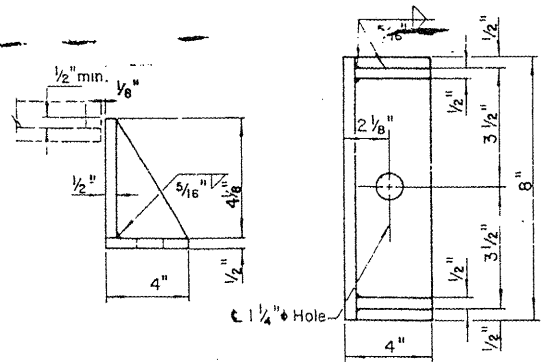
NOTE: The 1/8" TFE sheet shall be bonded directly to the top steel plate with a two-component, medium viscosity epoxy resin, conforming to the requirements of the Federal Specification MMM-A-134, Type 1. The bond agent shall be applied on the full area of the contact surfaces. Bonding of 1/8" TFE during a cold-weather process will be permitted provided the process and method of adjusting assembly height is approved by the Engineer.



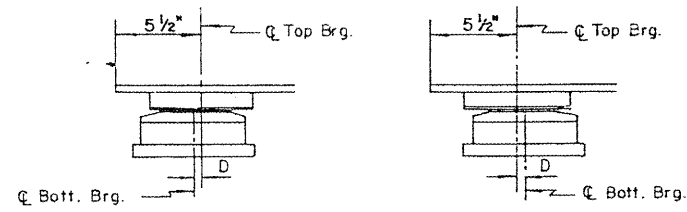
PLAN



PINTLE



SIDE RETAINER



BELOW 50°F (Move bott. brg. away from fixed brg.)
ABOVE 50°F (Move bott. brg. toward fixed brg.)
SETTING ANCHOR BOLTS AT EXP BRG.
D = 1/8" per each 100' of expansion for every 15° temp. change from the normal temp. of 50°F.

UNITS I & II
BEARINGS
F.A.R.I.34 SEC.2BR
MASON-MENARD COUNTY
STA. 730+40.73

EXISTING PLANS, SN 065-0002
VARIOUS ROUTES
D6REHAB BDGE PAINTING 2012
MENARD, SANGAMON COUNTIES

FOR INFORMATION ONLY