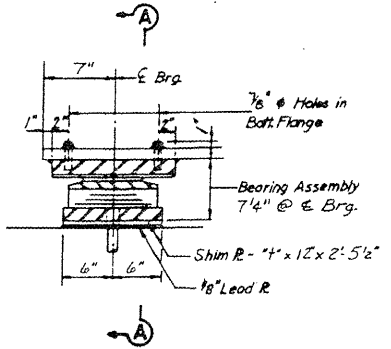


737	14-1, B-D	Menard	85147
-----	-----------	--------	-------

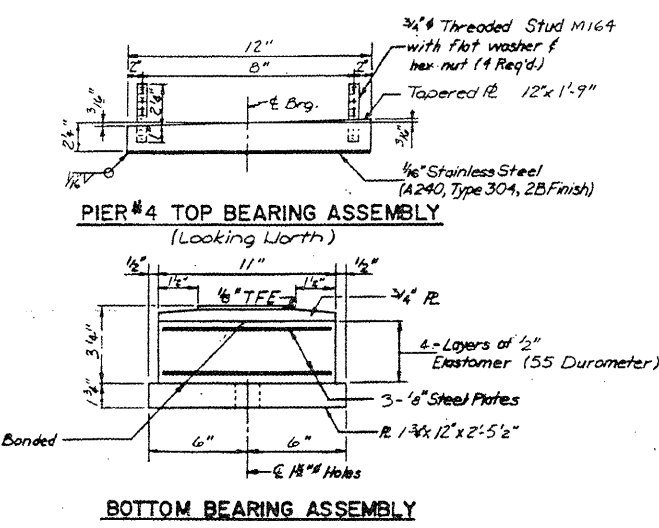
TABLE FOR "I" DIMENSION FOR SHIM PLATES

Girder Location	Girder #1	Girder #2	Girder #3	Girder #4	Girder #5
Pier #4			8"		

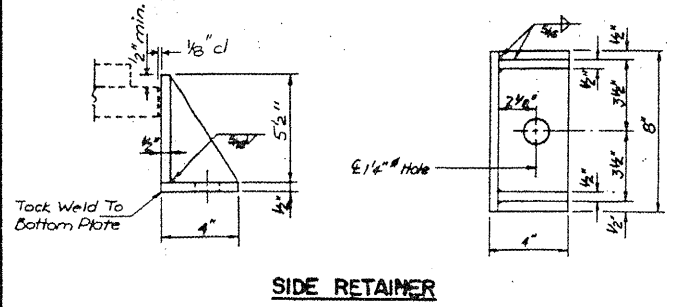


SECTION AT PIER #4

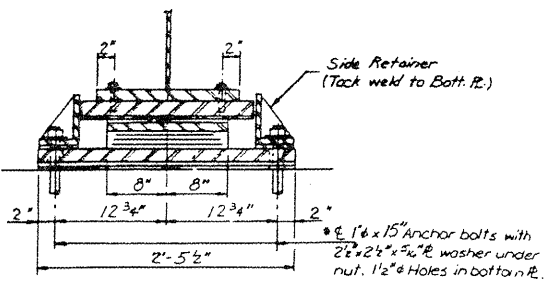
TYPE II TFE ELASTOMERIC EXP. BRG.



BOTTOM BEARING ASSEMBLY



SIDE RETAINER

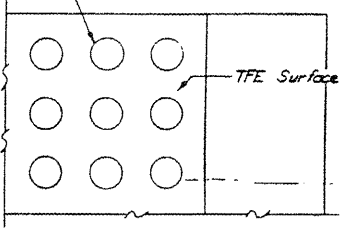


SECTION A-A

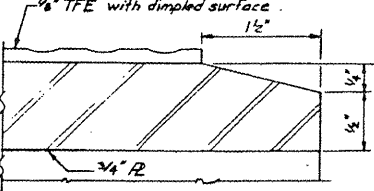
\* NOTE: After beams have been erected holes of expansion bearings shall be drilled and anchor bolts grouted in place.

All bearing plates are M-183 unless noted. The cost of side retainers is incidental to the cost of elastomeric bearings.

1/4" Dimples on 1/2" centers 1/4" deep, or equivalent.



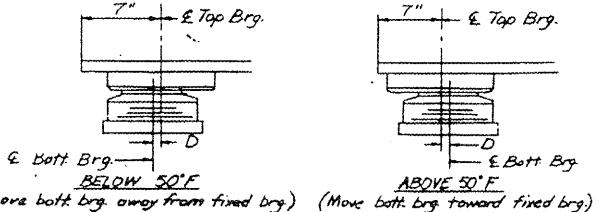
PLAN - TFE SURFACE



SECTION THRU TFE

NOTE: The 1/4" TFE sheet shall be bonded directly to the top steel plate with a two-component, medium viscosity epoxy resin, conforming to the requirements of the Federal Specification MMM-A-134, Type I. The bond agent shall be applied on the full area of contact surfaces.

Bonding of 1/4" TFE sheet during vulcanizing process will be permitted provided the process and method of adjusting assembly height is approved by the Engineer.



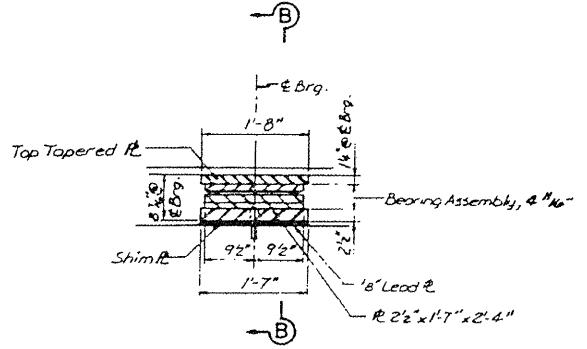
SETTING ANCHOR BOLTS AT EXP. BRG.

D = 1/8" per each 100' of expansion for every 15° temp. change from the normal temp. of 50°F.

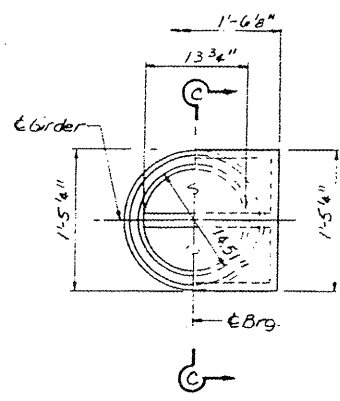
PIER #4

TABLE FOR "I" DIMENSION FOR SHIM PLATES

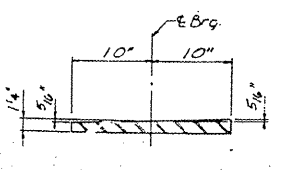
Girder Location	Girder #1	Girder #2	Girder #3	Girder #4	Girder #5
Pier #6			8"		



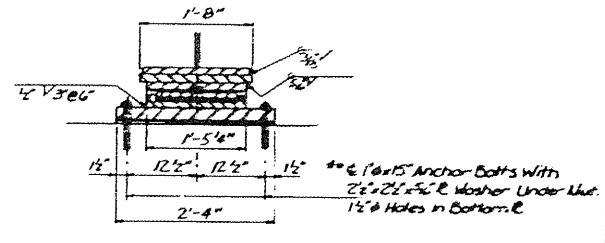
SECTION AT PIER #6



CUT-AWAY PLAN BEARING ASSEMBLY



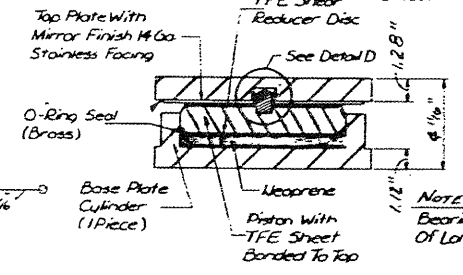
TOP TAPERED PLATE (Looking North) (M123 Gr. 50)



SECTION B-B

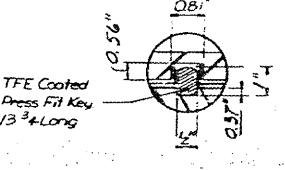
\* NOTE: After Beams Have Been Erected Holes At Expansion Bearings Shall Be Drilled And Anchor Bolts Grouted In Place.

All Bearing Plates Are M-183 unless noted.

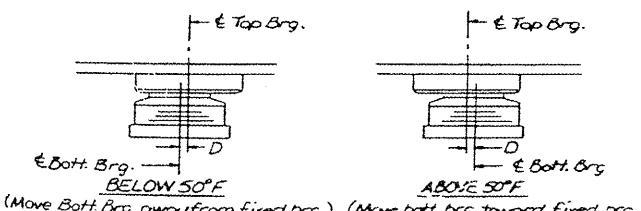


SECTION C-C

NOTE: Bearing Assembly Capable Of Longitudinal Movement ±1"



DETAIL D



SETTING ANCHOR BOLTS AT EXP. BRG.

D = 1/8" per each 100' of expansion for every 15° temp. change from the normal temp. of 50°F.

SETTING ANCHOR BOLTS AT EXP. BRG.

D = 1/8" per each 100' of expansion for every 15° temp. change from the normal temp. of 50°F.

PIER #6

FOR INFORMATION ONLY

EXISTING PLANS, SN 065-0016  
VARIOUS ROUTES  
D6REHAB BDGE PAINTING 2012  
MENARD, SANGAMON COUNTIES