

STATE OF ILLINOIS
DEPARTMENT OF PUBLIC WORKS & BUILDINGS
DIVISION OF HIGHWAYS

PROJECT NO.	SEC.	PROJECT	SHEET NO.	TOTAL SHEETS
72F02	64-3HB-3	SANGAMON	42	10
FED. ROAD DIST. NO. 7				

SHEET 1 OF 13

GENERAL NOTES

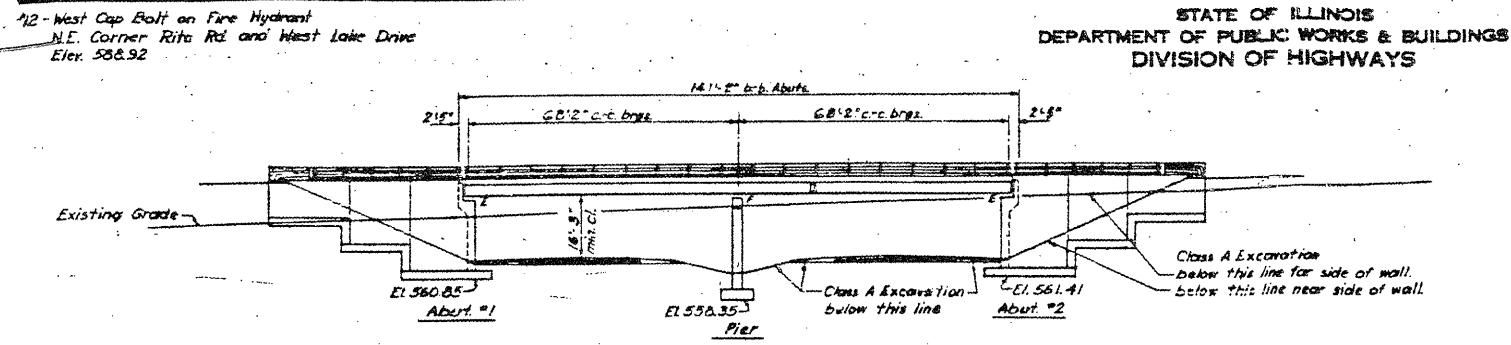
Class X Concrete shall be used throughout except in handrail and posts. Handrail Concrete shall be used in the handrail and posts. The concrete floor slab shall be finished in accordance with Art. 51.19 of the Standard Specifications, and shall be poured in one continuous operation between construction joints. Rivets 3/4" ϕ , open holes 1 1/16" ϕ , unless noted.

All holes for splices shall be punched 1 1/16" ϕ and reamed to proper size (1 3/16" ϕ in web and 1 5/16" ϕ in flange) with all stringers assembled in the shop in proper position. Leave assembled in shop for inspection.

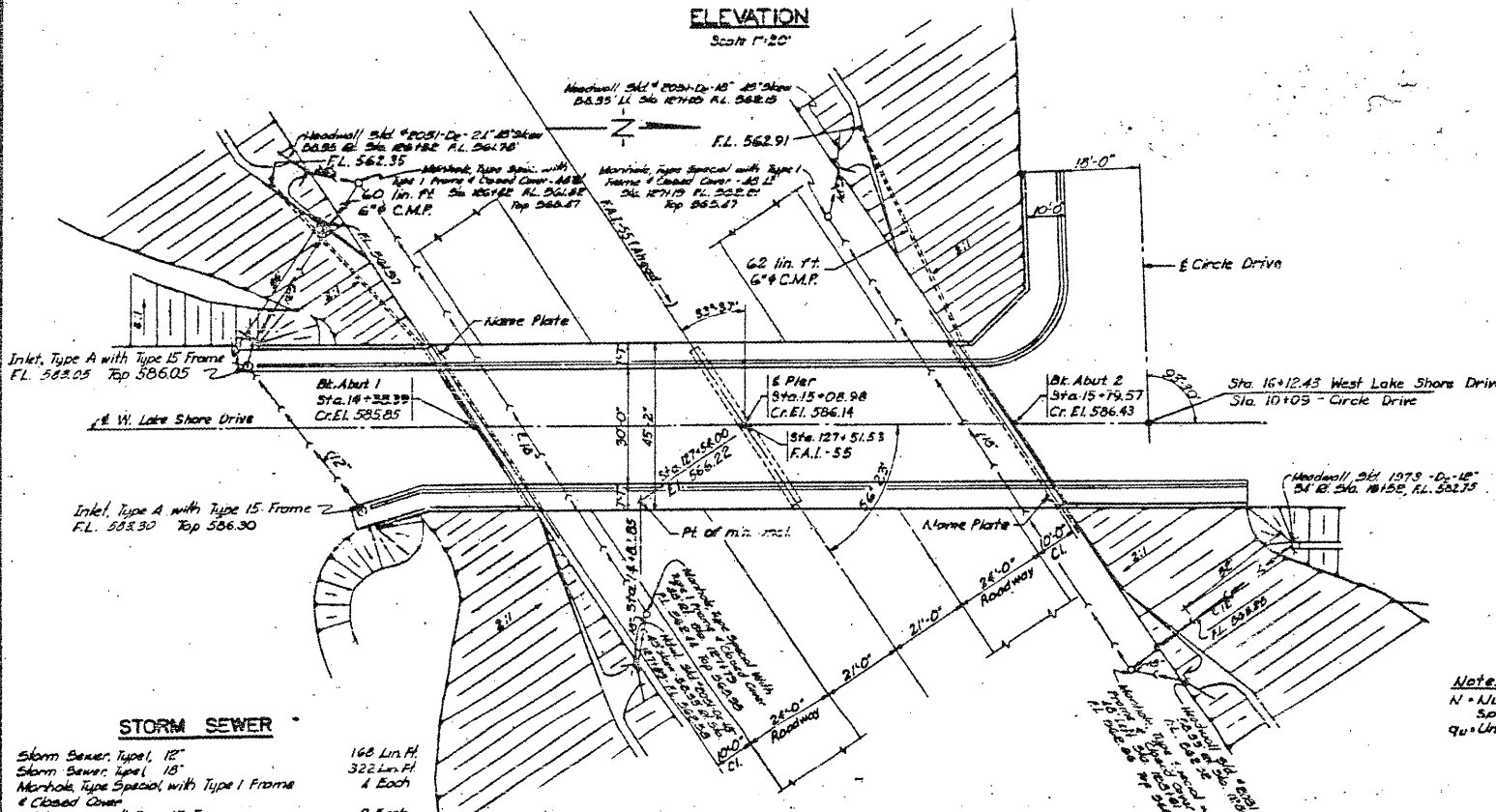
All rockers, bolsters, bearing plates, fill plates, lead plates, pintles, and anchor bolts shall be fabricated and set in accordance with Art. 51.15 of the Standard Specifications, and are included in the quantity of Structural Steel.

Anchor bolts shall be set before riveting diaphragms over supports. Except as otherwise provided, all Structural Steel shall receive one (1) shop coat of red lead paint and two (2) field coats of aluminum paint. See Art. 56.1 through 56.5 inclusive, of the Standard Specifications.

The aggregate for the Class X Concrete used in the barrier shall be free from chert, flint, ilmenite, lignite, and soft sandstone.



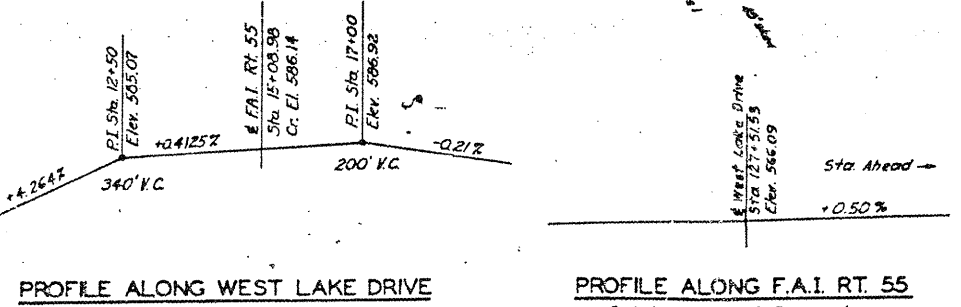
ELEVATION
Scale 1"=20'



STORM SEWER

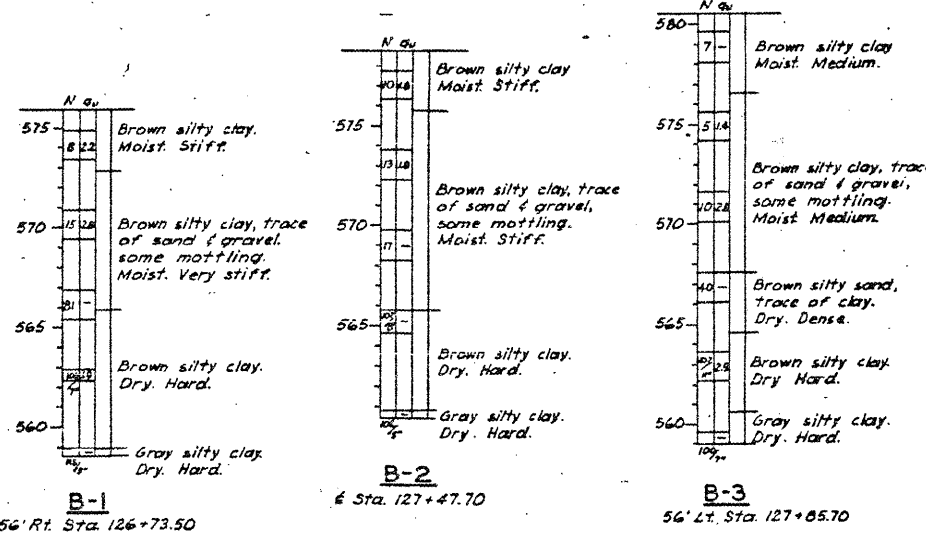
Storm Sewer, Type 1, 18" 168 Lin. Ft.
Storm Sewer, Type 1, 15" 322 Lin. Ft.
Manhole, Type Special, with Type 1 Frame & Closed Cover 4 Each
Inlet, Type A, with Type 15, Frame 8 Each
Class X Concrete (Handrail) 73 Cu. Yds.
Reinforcement Bars 250 lbs.
Storm Sewer, Type 1, 24" 14 Lin. Ft.
Trench Backfill 8 Cu. Yds.

PLAN



PROFILE ALONG WEST LAKE DRIVE

PROFILE ALONG F.A.I. RT. 55
@ Median Edge of Pavement



Notes:
N = Number of blows required to drive a 1 1/8" I.D. Split Spoon Sampler by means of a 140 lb weight falling 30".
qu = Unconfined compressive strength, of the soil in tons/sq. ft.

TOTAL BILL OF MATERIAL

ITEM	SUPER	SUB	TOTAL
Class X Concrete	Cu. Yds.	2001	682.4
Handrail Concrete	Cu. Yds.	2.3	-
Reinforcement Bars	Lbs.	35,610	81,730
Furnishing & Erecting Structural Steel	Lbs.	206,560	-
Furnishing & Erecting Metal Handrail	Lm. Ft.	915	-
Name Plates	Each	-	2
Class A Excavation for Structures	Cu. Yds.	-	2034
Corrugated Metal Pipe, 6 inch	Lm. Ft.	-	122
Perforated Corrugated Metal Pipe, 6 inch Lin. Ft.	-	-	310
Porous Granular Backfill	Cu. Yds.	-	51
Portland Cement Concrete Sidewalk (6")	Sq. Ft.	1556	-

LETTERING FOR NAME PLATE
See Std. 2113

STATION 127+51.53
BUILT 196 BY
STATE OF ILLINOIS
F.A. RT. 55 SEC. 64-3HB-3
F.A. PROJ. I-55-3(16)
LOADING H20-S16

DESIGN STRESSES

f_c = 1,400 p.s.i. (Super & Piers)
f_c = 1,000 p.s.i. (Abut.)
f_s = 20,000 p.s.i. (Reinf.)
f_s = 18,000 p.s.i. (Struct.)
v = .75 p.s.i. (Footings)
n = 10
Design Footing Pressure
Ave. = 2.1 tons/sq. ft.
Max. = 2.9 tons/sq. ft.
Loading H20-S16-44
with 20' h. ft. Future W.S.

GENERAL PLAN & ELEVATION
WEST LAKE DRIVE OVER FED. AID INTERSTATE
PROJECT I-55-3(16)93
F.A.I. ROUTE 55 SEC. 64-3HB-3
SANGAMON COUNTY
STATION 127+51.53



JENNIFER MERCHANT & HANWELL
CONSULTING ENGINEERS
SPP, IFFIELD, ILLINOIS

EXISTING PLANS, SN 084-0092
VARIOUS ROUTES
D6REHAB BDGE PAINTING 2012
MENARD, SANGAMON COUNTIES

FOR INFORMATION ONLY

DESIGNED	R.E.G.	EXAMINED	
CHECKED	M.J.R.	APPROVED	
DRAWN	T.E.B.		
CHECKED	M.J.R.		