

STATE OF ILLINOIS
 DEPARTMENT OF TRANSPORTATION
 DIVISION OF HIGHWAYS

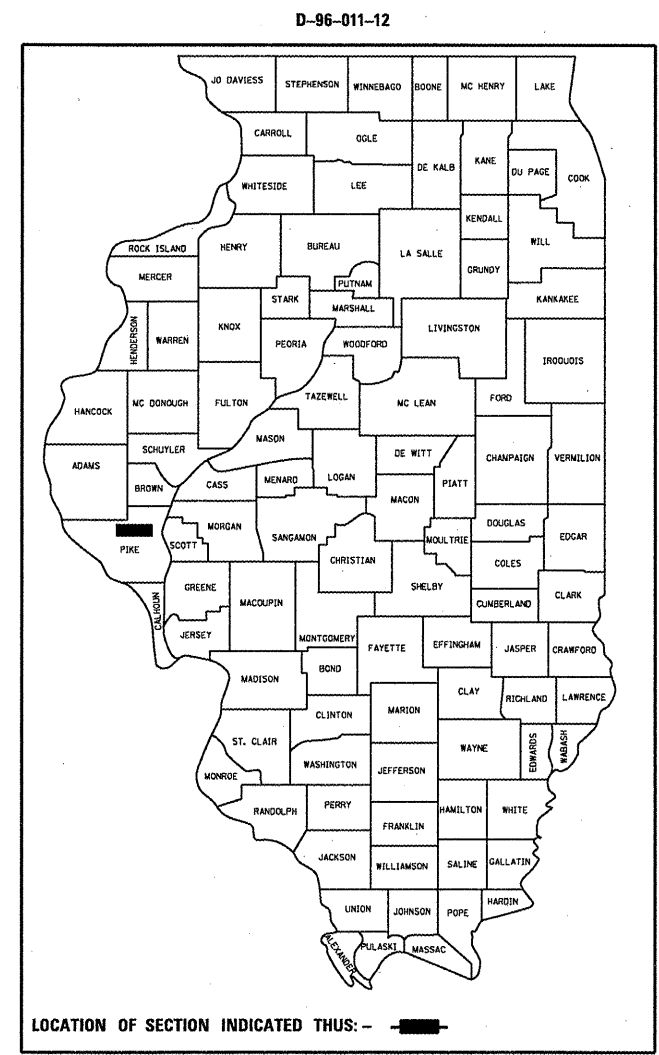
**PROPOSED
 CONTRACT MAINTENANCE**

VARIOUS
 SECTION D6 SHOULDER REPAIR 2012
 PIKE COUNTY

C-96-011-12

RTE.	SECTION	COUNTY	TOTAL SHEETS	SHEET NO.
VAR. D6 SHOULDER REPAIR 2012		PIKE	6	1
FED. ROAD DIST. NO.	ILLINOIS	CONTRACT NO. 72F03		

FOR INDEX OF SHEETS, SEE SHEET NO. 2



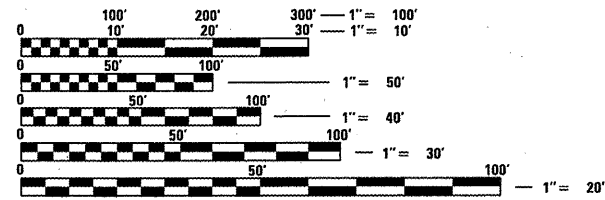
STA. EQ. 1584 + 24.98bk =
 775 + 49.10ah

STA. EQ. 951 + 88.89bk =
 951 + 83.98ah

ADT = 5,300 (1,750)

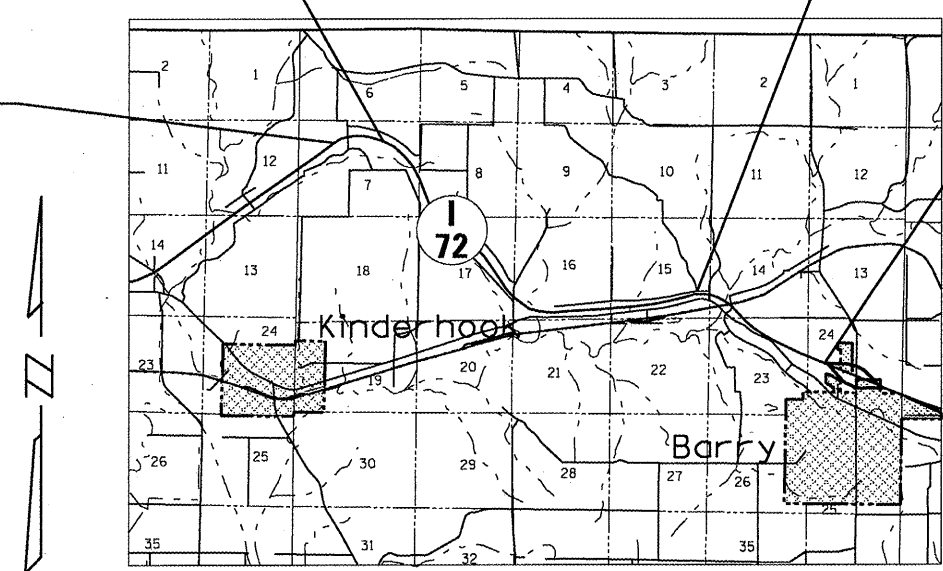
BEGIN PROJECT
 STA. 1527 + 70.00

END PROJECT
 STA. 995 + 00.00



FULL SIZE PLANS HAVE BEEN PREPARED USING STANDARD ENGINEERING SCALES. REDUCED SIZED PLANS WILL NOT CONFORM TO STANDARD SCALES. IN MAKING MEASUREMENTS ON REDUCED PLANS, THE ABOVE SCALES MAY BE USED.

J.U.L.I.E.
 JOINT UTILITY LOCATION INFORMATION FOR EXCAVATION
 1-800-892-0123
 OR 811



PLAN AND CONTRACT TECHNICIAN
 TIMOTHY SHARP (217)782-7743

CONTRACT NO. 72F03

GROSS LENGTH = 27,610.79 FT. = 5.229 MILES
 NET LENGTH = 2,020 FT. = 0.383 MILE

STATE OF ILLINOIS
 DEPARTMENT OF TRANSPORTATION
 DIVISION OF HIGHWAYS

SUBMITTED NOVEMBER 9, 20 11
Roger Z. Orndorff
 DEPUTY DIRECTOR OF HIGHWAYS, REGION ENGINEER

December 9, 20 11
Scott E. Stitt, P.E.
 ENGINEER OF DESIGN AND ENVIRONMENT

December 9, 20 11
William R. Fleisher
 DIRECTOR OF HIGHWAYS, CHIEF ENGINEER

PRINTED BY THE AUTHORITY
 OF THE STATE OF ILLINOIS