

F.A.P. RTE.	SECTION	COUNTY	TOTAL SHEETS	SHEET NO.
662	(67)I, (109)I-2	MACOUPIN	7	1
		ILLINOIS	CONTRACT NO. 72F10	

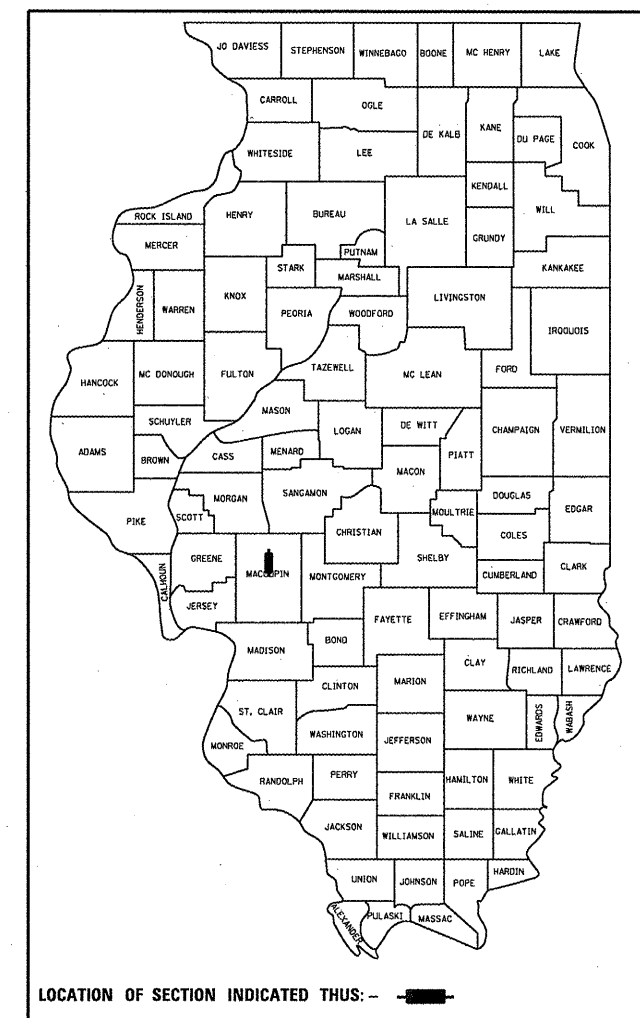
STATE OF ILLINOIS
DEPARTMENT OF TRANSPORTATION
DIVISION OF HIGHWAYS

PROPOSED HIGHWAY PLANS

FAP ROUTE 662 (IL 4 & IL 108)
SECTION (67)I, (109)I-2
PROJECT F-0662(067)
BRICK PAVEMENT PATCHING
MACOUPIN COUNTY

C-96-020-12

D-96-020-12

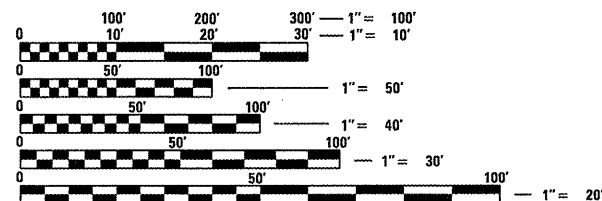


INDEX OF SHEETS

- 1 COVER SHEET
- 2 GENERAL NOTES/COMMITMENTS
- 3 SUMMARY OF QUANTITIES
- 4 TYPICAL SECTIONS
- 5 SCHEDULE OF QUANTITIES
- 6 PLAN VIEW OF CARLINVILLE SQUARE
- 7 DETAIL OF BRICK PAVEMENT REMOVAL AND REPLACEMENT

LIST OF STANDARDS

701502-04
701701-08
701901-02

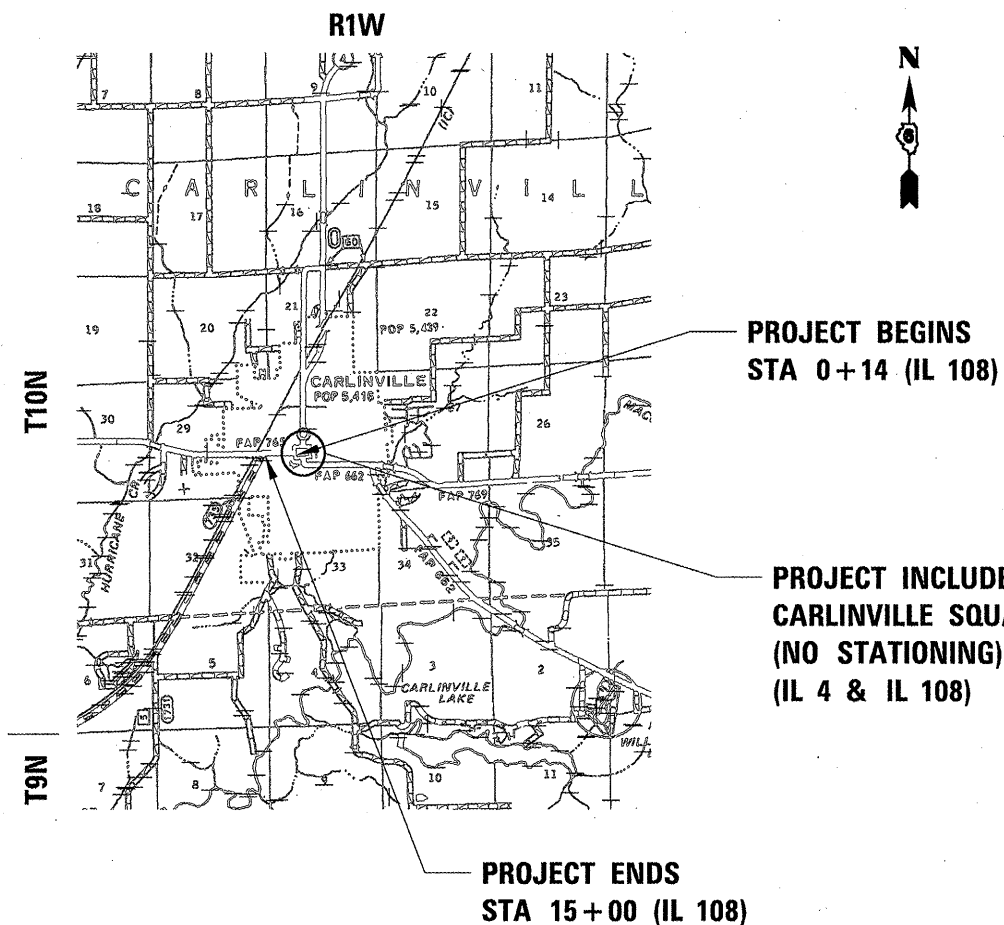


FULL SIZE PLANS HAVE BEEN PREPARED USING STANDARD ENGINEERING SCALES. REDUCED SIZED PLANS WILL NOT CONFORM TO STANDARD SCALES. IN MAKING MEASUREMENTS ON REDUCED PLANS, THE ABOVE SCALES MAY BE USED.

J.U.L.I.E.
JOINT UTILITY LOCATION INFORMATION FOR EXCAVATION
1-800-892-0123
OR 811

SENIOR TEAM LEADER: VINCE MADONIA 217-785-9046
TEAM LEADER: JAY EDWARDS 217-785-5321

CONTRACT NO. 72F10



ADT = 9400 (2009)
PV = 8667 (92.2%)
SU = 517 (5.5%)
MU = 216 (2.3%)

GROSS LENGTH = 1514.00 FT. = 0.287 MILE
NET LENGTH = 1514.00 FT. = 0.287 MILE

STATE OF ILLINOIS
DEPARTMENT OF TRANSPORTATION
DIVISION OF HIGHWAYS

SUBMITTED *November 10 20 11*
Rosa Z. Dink
DEPUTY DIRECTOR OF HIGHWAYS, REGION ENGINEER

December 9 20 11
Scott E. Stitt P.E.
ENGINEER OF DESIGN AND ENVIRONMENT

December 9 20 11
William R. Freyer
Interim DIRECTOR OF HIGHWAYS, CHIEF ENGINEER

**PRINTED BY THE AUTHORITY
OF THE STATE OF ILLINOIS**