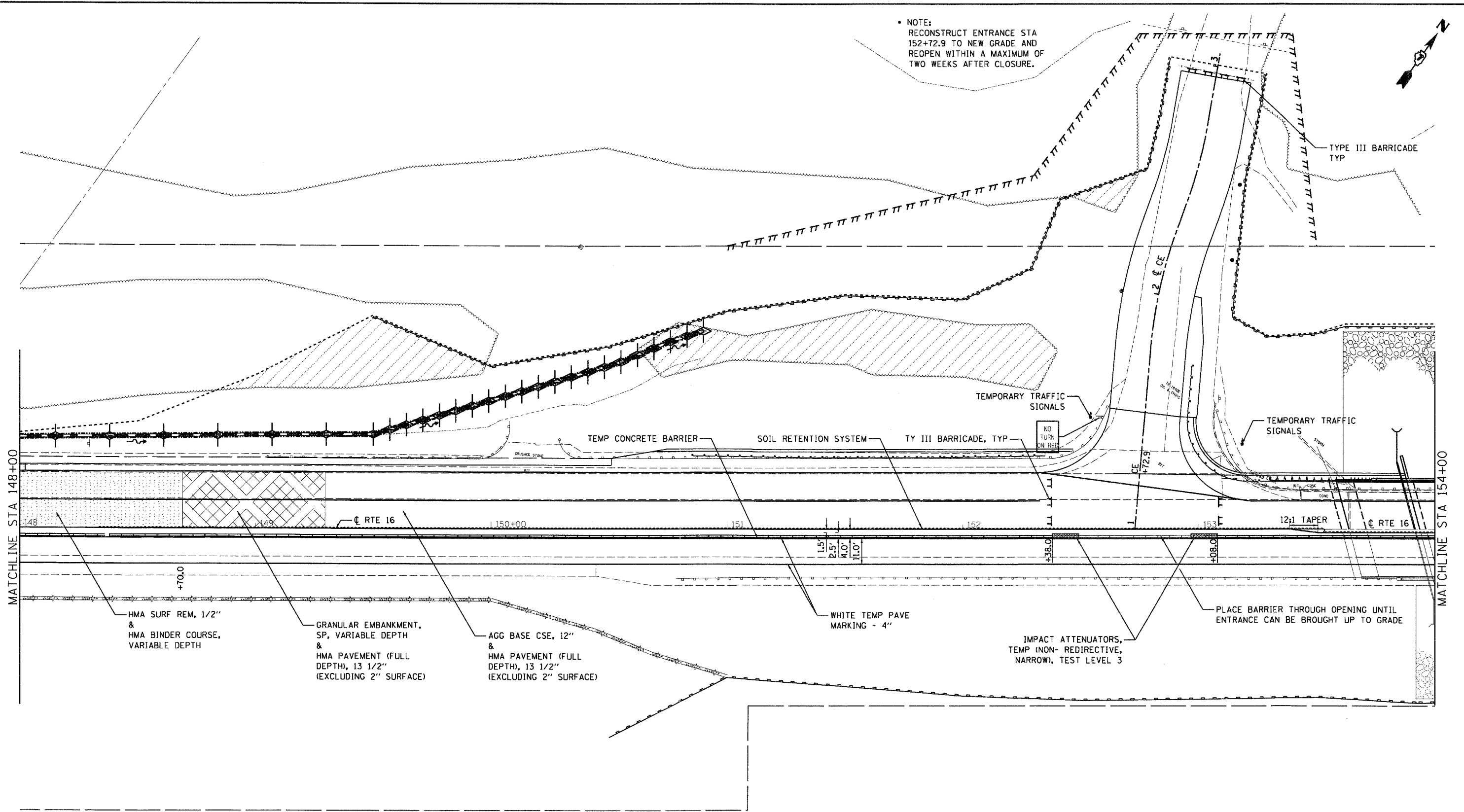
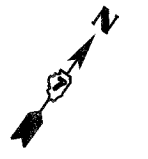


NOTE:
RECONSTRUCT ENTRANCE STA
152+72.9 TO NEW GRADE AND
REOPEN WITHIN A MAXIMUM OF
TWO WEEKS AFTER CLOSURE.



HMA SURF REM, 1/2"
&
HMA BINDER COURSE,
VARIABLE DEPTH

GRANULAR EMBANKMENT,
SP, VARIABLE DEPTH
&
HMA PAVEMENT (FULL
DEPTH), 13 1/2"
(EXCLUDING 2" SURFACE)

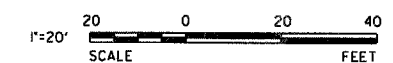
AGG BASE CSE, 12"
&
HMA PAVEMENT (FULL
DEPTH), 13 1/2"
(EXCLUDING 2" SURFACE)

WHITE TEMP PAVE
MARKING - 4"

IMPACT ATTENUATORS,
TEMP (NON- REDIRECTIVE,
NARROW), TEST LEVEL 3

PLACE BARRIER THROUGH OPENING UNTIL
ENTRANCE CAN BE BROUGHT UP TO GRADE

PRINTED DATE: 5/11/2011
FILE: \\server\projects\148_154\148_154.dwg - d7 - various design\work_order - 07\road\drwg\148_154.dwg Stage 2.dwg



USER NAME = #USER#	DESIGNED - ADG	REVISED -
PLOT SCALE = 20.0000' / IN.	DRAWN - ADG	REVISED -
PLOT DATE = 5/11/2011	CHECKED - DF	REVISED -
	DATE - 05-11-2011	REVISED -

STATE OF ILLINOIS
DEPARTMENT OF TRANSPORTATION

STAGE CONSTRUCTION
STAGE 2
SCALE: 1"=20' SHEET NO 2 OF 6 SHEETS STA 148+00 TO STA 154+00

F.A.P. RTE.	SECTION	COUNTY	TOTAL SHEETS	SHEET NO
91	(5BR)B-1	COLES	91	29
CONTRACT NO 74244				
ILLINOIS FED. AID PROJECT				