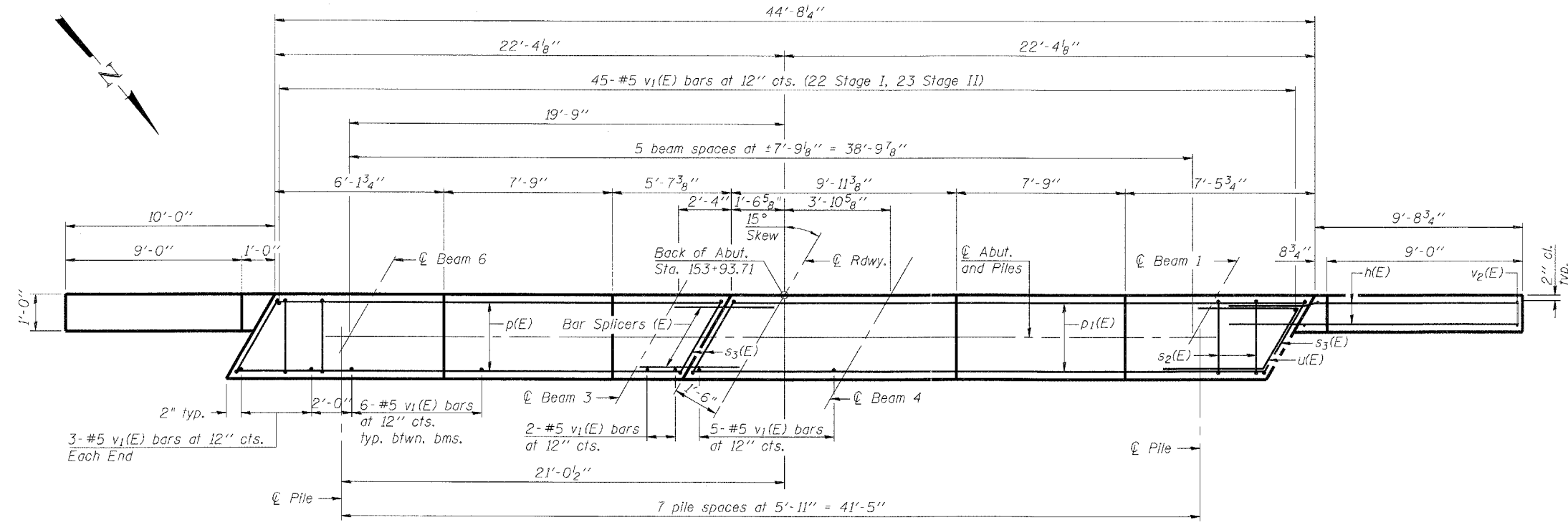
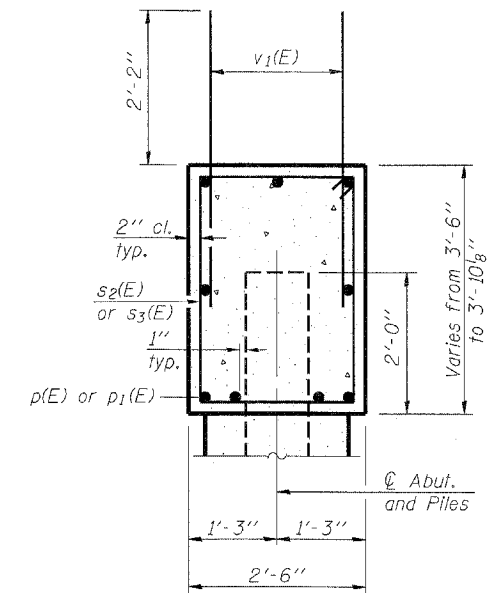
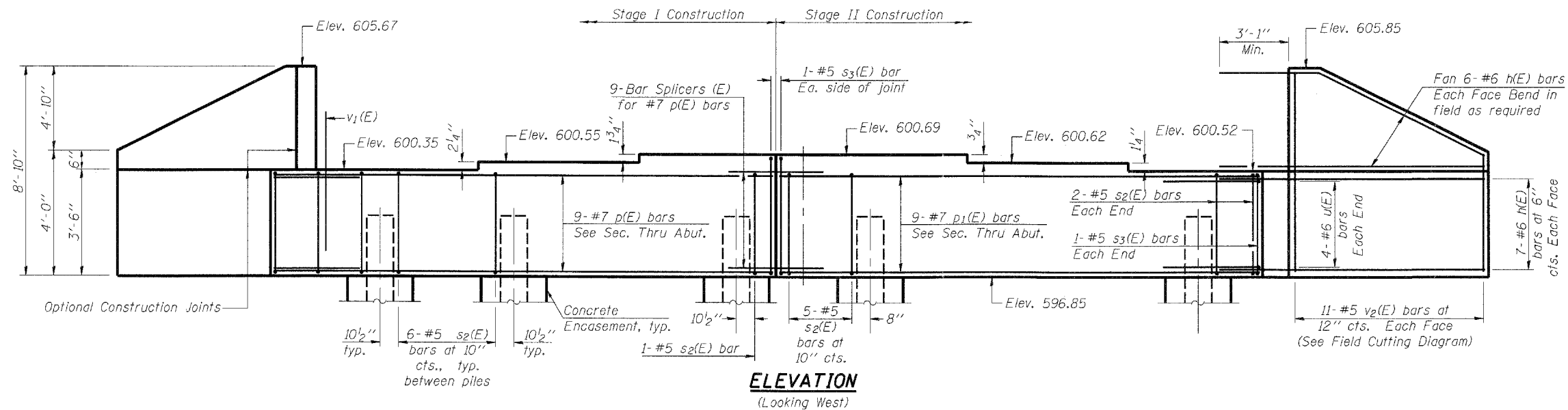


Notes:  
 Pour steps monolithically with cap.  
 Space reinforcement in cap to miss anchor bolts.



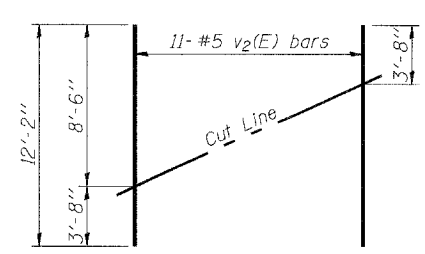
**BILL OF MATERIAL**

Bar	No.	Size	Length	Shape	
h(E)	52	#6	14'-10"	—	
p(E)	9	#7	20'-6"	—	
p <sub>1</sub> (E)	9	#7	23'-6"	—	
s <sub>2</sub> (E)	39	#5	11'-7"	□	
s <sub>3</sub> (E)	4	#5	11'-9"	□	
u(E)	8	#6	9'-3"	┘	
v <sub>1</sub> (E)	81	#5	4'-4"	—	
v <sub>2</sub> (E)	22	#5	12'-2"	—	
Structure Excavation				Cu. Yd.	73.5
Concrete Structures				Cu. Yd.	20.0
Reinforcement Bars, Epoxy Coated				Pound	3250
Furnishing Steel Piles HP 12x63				Foot	280
Driving Piles				Foot	280
Test Pile Steel HP 12x63				Each	1
Concrete Encasement				Cu. Yd.	2.8
Pile Shoes				Each	8

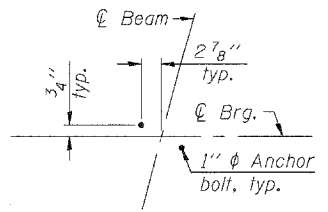
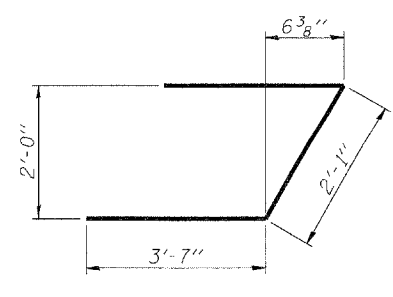
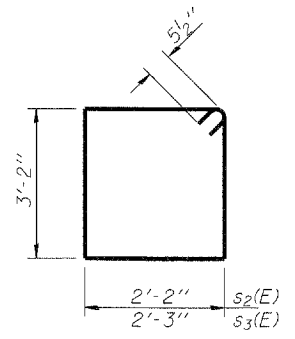
**PILE DATA**

Type: Steel-HP 12x63, with pile shoes  
 Nominal Required Bearing: 497 kips  
 Factored Resistance Available: 249 kips  
 Est. Length: 40', includes 2' of penetration into rock  
 No. Production Piles: 7  
 No. Test Piles: 1  
 Estimated Top of Rock Elev.: 561.6

Note:  
 Piles shall be driven through - diameter precored holes extending to elevation - according to Article 512.09(c) of the Standard Specifications. Cost included in driving piles.



Order v<sub>2</sub>(E) full length. Cut as shown and use remainder of bars in opposite face.



For details of Bar Splicers, see sheet 22 of 24.  
 For details of piles and Concrete Encasement, see sheet 21 of 24.

PRINTED DATE: 5/11/2011  
 FILE NAME: m:\projects\2010\148\_1tem\_25 - d17\various design\work\_order\_07\roads\sub-projects\Sheet\52\_RUB\_Abut\_Vest.dgn



DESIGNED - DF  
 CHECKED - ADG, SA  
 DRAWN - ADG  
 CHECKED - DF

REVISIONS:  
 REVISION -  
 REVISION -  
 REVISION -  
 REVISION -

STATE OF ILLINOIS  
 DEPARTMENT OF TRANSPORTATION

WEST ABUTMENT  
 STRUCTURE NO. 015-0075  
 SHEET NO. 17 OF 24 SHEETS

F.A.P. RTE.	SECTION	COUNTY	TOTAL SHEETS	SHEET NO.
91	(SBR)B-1	COLES	91	52

CONTRACT NO. 74244  
 FED. ROAD DIST. NO. ILLINOIS FED. AID PROJECT