

1-20-2012 LETTING ITEM 048

STATE OF ILLINOIS
DEPARTMENT OF TRANSPORTATION
DIVISION OF HIGHWAYS

**PROPOSED
HIGHWAY PLANS**

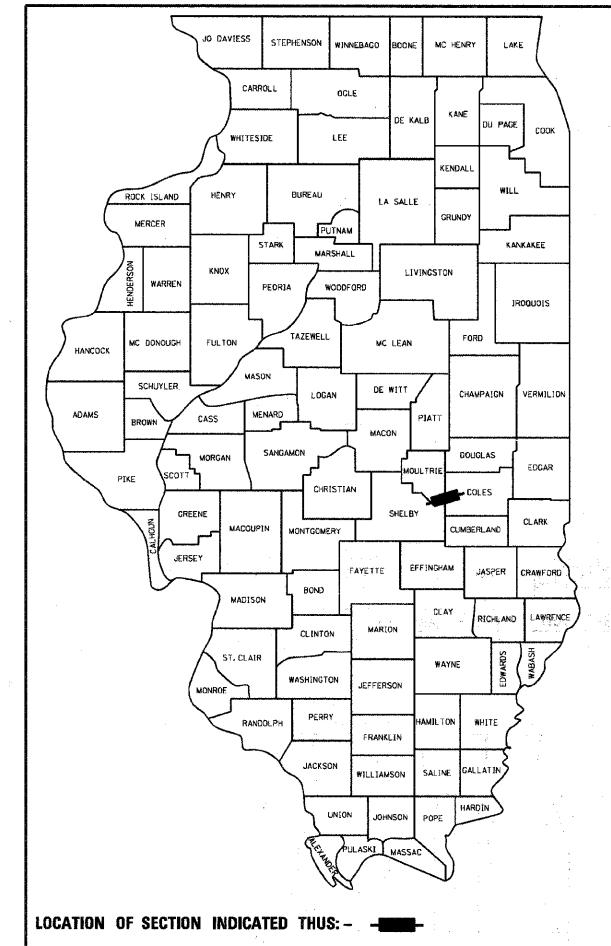
FAP ROUTE 325 (ILL 16), 320 (US 45)
SECTION (8,9,10)RS-3, (19Z)RS-2
PROJECT F-0005(869)
3P RESURFACING
COLES & MOULTRIE COUNTIES

C-97-090-07

F.A.P. RTE.	SECTION	COUNTY	TOTAL SHEETS	SHEET NO.
325		ILLINOIS	24	1

•(8,9,10)RS-3, (19Z)RS-2
• Coles, Moultrie

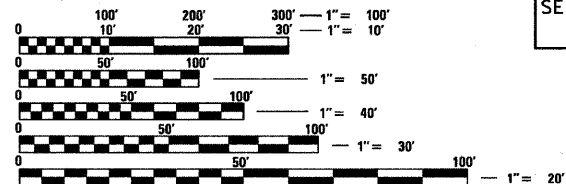
D-97-050-07



LOCATION OF SECTION INDICATED THUS: —■—

FOR INDEX OF SHEETS, SEE SHEET NO. 2

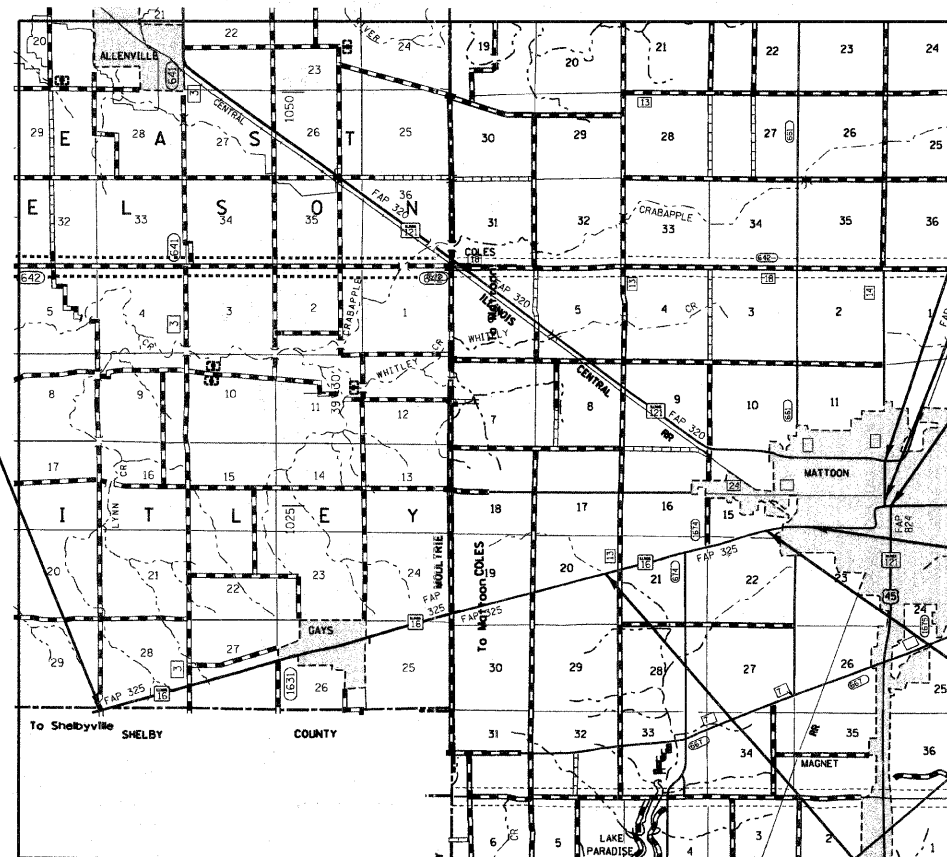
ADT: IL 16 3,800
US 45 9,500



FULL SIZE PLANS HAVE BEEN PREPARED USING STANDARD ENGINEERING SCALES. REDUCED SIZED PLANS WILL NOT CONFORM TO STANDARD SCALES. IN MAKING MEASUREMENTS ON REDUCED PLANS, THE ABOVE SCALES MAY BE USED.

J.U.L.I.E.
JOINT UTILITY LOCATION INFORMATION FOR EXCAVATION
1-800-892-0123
OR 811

PROJECT ENGINEER: MARK DAUGHERTY
PROJECT MANAGER: SOLOMON DZAKUMA
PHONE: (217)-342-8360
CONTRACT NO. 74259



SECTION (8, 9, 10)RS-3
ENDS STA 426+00

SECTION (19Z)RS-2
ENDS STA 30+40.5

SECTION (19Z)RS-2
BEGINS STA 2+63

SECTION (8, 9, 10)RS-3
BEGINS STA 85+96

STATION EQUATION
STA 26+63 =
STA 989+25

STATION EQUATION
STA 1002+91.3 =
STA 2+91.3

BRIDGE OMISSION
SN 015-0013
STA 109+93.68 TO
STA 110+26.36

GROSS LENGTH SECTION (8,9,10)RS-3 = 49,608.00 FT. = 9.395 MILE
NET LENGTH SECTION (8,9,10)RS-3 = 49,575.30 FT. = 9.389 MILE

GROSS LENGTH SECTION (19Z)RS-2 = 2778 FT. = 0.526 MILE
NET LENGTH SECTION (19Z)RS-2 = 2778 FT. = 0.526 MILE

STATE OF ILLINOIS
DEPARTMENT OF TRANSPORTATION
DIVISION OF HIGHWAYS

SUBMITTED Oct 21 2011
Rogan J. Driskell
DEPUTY DIRECTOR OF HIGHWAYS, REGION ENGINEER

December 9 2011
Scott E. Stitt P.E.
acting ENGINEER OF DESIGN AND ENVIRONMENT

December 9 2011
William R. Frey
DIRECTOR OF HIGHWAYS, CHIEF ENGINEER

**PRINTED BY THE AUTHORITY
OF THE STATE OF ILLINOIS**

GENERAL NOTES

THIS SECTION SHALL BE CONSTRUCTED IN ACCORDANCE WITH THE PLANS; THE "STANDARD SPECIFICATIONS FOR ROAD AND BRIDGE CONSTRUCTION", ADOPTED JANUARY 1, 2012; THE "SUPPLEMENTAL SPECIFICATIONS AND RECURRING SPECIAL PROVISIONS" INDICATED ON THE CHECK SHEET, AND THE SPECIAL PROVISIONS INCLUDED IN THIS PROPOSAL.

THE WORK INCLUDED IN SECTION (8,9,10)RS-3 CONSISTS OF MILLING, OVERLAYING WITH HOT-MIX ASPHALT, AND PLACEMENT OF AGGREGATE SHOULDERS ON IL 16, BEGINNING IN THE CITY OF MATTOON AND ENDING AT THE SHELBY COUNTY LINE. THE WORK INCLUDED IN SECTION (19Z)RS-2 CONSISTS OF INLAY ON US45 FROM IL 16 TO DEWITT AVENUE, AND INCLUDES THE DEWITT INTERSECTION IMPROVEMENT EXTENDING ABOUT 500 FEET TO THE EAST OF THE INTERSECTION. THESE, PAVEMENT MARKING, PLUS ANY OTHER WORK NECESSARY TO COMPLETE THE SECTIONS, CONSTITUTE THE PROJECT.

PAVEMENT MARKING SHALL BE APPLIED IN ACCORDANCE WITH SECTION 780 OF THE STANDARD SPECIFICATIONS. SHORT TERM PAVEMENT MARKING SHALL BE APPLIED TO THE MILLED SURFACE, BITUMINOUS MATERIALS (PRIME COAT), AND HOT-MIX ASPHALT LEVEL BINDER, HOT-MIX ASPHALT SURFACE COURSE AS SPECIFIED IN SECTION 703 OF THE STANDARD SPECIFICATIONS. TEMPORARY TAPE SHALL BE USED ON THE SURFACE COURSE AND PAINT SHALL BE USED ON MILLED SURFACES.

THE DETECTOR LOOP, TYPE 1 PAY ITEM IS INCLUDED FOR REPLACEMENT OF LOOPS EXPECTED TO BE DESTROYED BY MILLING. THE REPLACEMENT LOOPS SHALL BE INSTALLED PRIOR TO CONSTRUCTION OF THE SURFACE COURSE IN THE AREAS AFFECTED.

THE EXISTING PAVEMENT SHALL BE PATCHED IN ACCORDANCE WITH SECTION 442 OF THE STANDARD SPECIFICATIONS AND THE SPECIAL PROVISIONS. THE QUANTITY OF PATCHING SHOWN ON THE PLANS IS AN ESTIMATE ONLY AND THE FINAL LOCATIONS AND QUANTITY SHALL BE DETERMINED BY THE ENGINEER IN THE FIELD.

THE CONTRACTOR SHALL PROVIDE INTERNET ACCESS TO THE HOT-MIX ASPHALT PLANT QUALITY CONTROL LAB SO THAT HOT-MIX ASPHALT PLANT REPORTS CAN BE E-MAILED TO THE DISTRICT HEADQUARTERS. THIS WORK SHALL BE INCLUDED IN THE COST OF ALL HOT-MIX ASPHALT ITEMS.

VIBRATORY ROLLERS IN DYNAMIC MODE WILL NOT BE ALLOWED WITHIN MATTOON CITY LIMITS, DENSITY REQUIREMENTS WILL REMAIN THE SAME.

THE CONTRACTOR SHALL USE EITHER RC-70 OR AN EMULSIFIED POLYMER PRIME SS-1HP OR SS-1H FOR BITUMINOUS MATERIALS (PRIME COAT).

THE RESIDENT ENGINEER SHALL BE THE SOLE JUDGE CONCERNING THE CURING TIME FOR THE VARIOUS BITUMINOUS LIFTS.

AGGREGATE SURFACE COURSE SHALL BE CRUSHED STONE OR CRUSHED CONCRETE.

AGGREGATE SHOULDERS SHALL BE CRUSHED STONE, CRUSHED CONCRETE OR RAP.

THE PAY ITEM TEMPORARY RAMP HAS BEEN INCLUDED FOR THE CONSTRUCTION OF TEMPORARY RAMPS IN ACCORDANCE WITH ARTICLE 406.08 OF THE STANDARD SPECIFICATIONS. THE CONTRACT UNIT PRICE PER SQUARE YARD FOR TEMPORARY RAMP SHALL INCLUDE BOTH THE INSTALLATION AND THE REMOVAL OF THE RAMPS.

MANHOLES, VALVE VAULTS AND OTHER APPURTENANCES EXPOSED BY THE HOT-MIX ASPHALT SURFACE REMOVAL SHALL BE TEMPORARILY RAMPED WITH HMA AS DIRECTED BY THE ENGINEER. THE INSTALLATION AND SUBSEQUENT REMOVAL OF TEMPORARY RAMPS SHALL NOT BE PAID FOR SEPARATELY BUT SHALL BE CONSIDERED AS INCLUDED IN THE COST OF HOT MIX ASPHALT SURFACE REMOVAL PAY ITEMS.

THE FOLLOWING RATES OF APPLICATION HAVE BEEN USED IN CALCULATING PLAN QUANTITIES:

HOT MIX ASPHALT	112 LBS/SQ YD/IN
BITUMINOUS MATERIALS PRIME COAT	0.10 GALLONS/SQ YD
AGGREGATE PRIME COAT	4 LBS/SQ YD
GRANULAR MATERIAL	2.05 TONS/CU YD

INDEX OF SHEETS

SHEET NO	TITLE
1	COVER SHEET
2	GENERAL NOTES, INDEX OF SHEETS
3-4	SUMMARY OF QUANTITIES
5-7	TYPICAL SECTIONS
8-9	RESURFACING SCHEDULES
10	MONUMENTS & TIES
11	RURAL ENTRANCE SCHEDULE AND MAILBOX TURNOUT DETAILS
12	LOCATION MAP
13-15	BRIDGE REHABILITATION DETAILS
16-19	DETECTOR LOOPS REPLACEMENT DETAILS
20-23	PAVEMENT MARKING DETAILS
24	TYPICAL APPLICATIONS OF DETECTOR LOOPS

THE FOLLOWING STANDARDS ARE A PART OF THESE PLANS AND ARE INCLUDED FOLLOWING THE LAST NUMBERED SHEET OF THE PLANS.

000001-06	STANDARD SYMBOLS, ABBREVIATIONS, AND PATTERNS
442201-03	CLASS C AND D PATCHES
701201-04	LANE CLOSURE, 2L, 2W, DAY ONLY, FOR SPEEDS >= 45 MPH
701301-04	LANE CLOSURE, 2L, 2W, SHORT TIME OPERATIONS
701306-03	LANE CLOSURE, 2L, 2W, SLOW MOVING OPERATIONS DAY ONLY, FOR SPEEDS >= 45 MPH
701311-03	LANE CLOSURE, 2L, 2W, MOVING OPERATIONS - DAY ONLY
701501-06	URBAN LANE CLOSURE, 2L 2W, UNDIVIDED
701502-04	URBAN LANE CLOSURE, 2L 2W, WITH BIDIRECTIONAL LEFT TURN LANE
701602-05	URBAN LANE CLOSURE, MULTILANE 2W WITH BIDIRECTIONAL LEFT TURN LANE
701701-08	URBAN LANE CLOSURE, MULTILANE INTERSECTION
701901-02	TRAFFIC CONTROL DEVICES
780001-03	TYPICAL PAVEMENT MARKINGS
781001-03	TYPICAL APPLICATIONS RAISED REFLECTIVE PAVEMENT MARKERS
886001-01	DETECTOR LOOP INSTALLATIONS
886006-01	TYPICAL LAYOUT FOR DETECTION LOOPS

GENERAL NOTES CONTINUED

THE FOLLOWING MIXTURE REQUIREMENTS ARE APPLICABLE TO THIS PROJECT:

APPLICATION	AC/PG	DESIGN AIR VOIDS	MIXTURE COMPOSITION	FRICTION AGGREGATE
LEVELING BINDER (MACHINE METHOD) N70	PG 64-22	4.0% @ N=70	IL-9.5	N/A
HMA SURFACE COURSE, MIX "C", N70	PG 64-22	4.0% @ N=70	IL-9.5	MIX C
HMA SURFACE COURSE, MIX "D", N90	PG 64-22	4.0% @ N=90	IL-9.5	MIX D
CLASS D PATCHING	PG 64-22	4.0% @ N=70	IL-19.0	N/A
INCIDENTAL HMA	PG 64-22	4.0% @ N=70	IL-9.5	MIX C
HMA SHOULDERS	PG 64-22	4.0% @ N=30	IL-9.5L	N/A

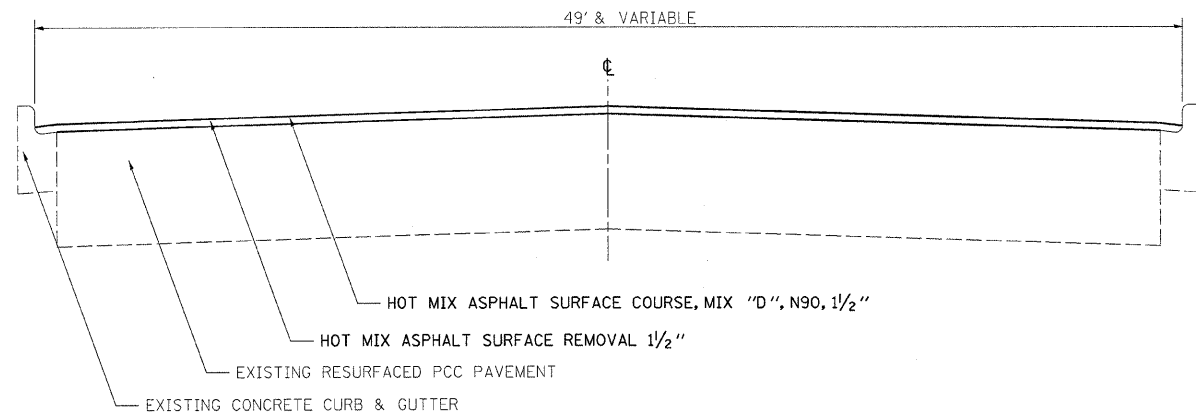
FILE NAME =	USER NAME = swartzrw	DESIGNED -	REVISED -	STATE OF ILLINOIS DEPARTMENT OF TRANSPORTATION	GENERAL NOTES & INDEX OF SHEETS		F.A.P. RTE.	SECTION	COUNTY	TOTAL SHEETS	SHEET NO.
af\pwork\p\idat\swartzrw\id240646\077	259-ght-gennote.dgn	DRAWN -	REVISED -				325	.	.	24	2
	PLOT SCALE = 1/8"=1'-0"	CHECKED -	REVISED -				ILLINOIS FED. AID PROJECT			CONTRACT NO. 74259	
	PLOT DATE = 10/21/2011	DATE -	REVISED -				SCALE: NA	SHEET NO. 1 OF 1 SHEETS	STA. TO STA.		

80% FED.
20% STATE

SUMMARY OF QUANTITIES			TOTAL QUANTITIES	CONSTRUCTION TYPE CODE				
CODE NO	ITEM	UNIT		FAP 325	FAP 325	COLES COUNTY	FAP 325	MOULTRIE
				RURAL IL 16 0005	URBAN IL 16 0005	URBAN US 45 0005	RURAL 0014	RURAL IL 16 0005
Z0049799	PROTECTING OR RESETTING SURVEY MARKERS	EACH	4	1	1	1		1
40200800	AGGREGATE SURFACE COURSE, TYPE B	TON	10	3				7
40600100	BITUMINOUS MATERIALS (PRIME COAT)	GALLON	20534	8119	2402	2171		7842
40600300	AGGREGATE (PRIME COAT)	TON	410	162	48	43		157
40600635	LEVELING BINDER (MACHINE METHOD), N70	TON	4860	2383			6	2471
40600895	CONSTRUCTING TEST STRIP	EACH	1	1				
40600982	HOT-MIX ASPHALT SURFACE REMOVAL - BUTT JOINT	SQ YD	120					120
40600990	TEMPORARY RAMP	SQ YD	318		29	182	85	22
40603315	HOT-MIX ASPHALT SURFACE COURSE, MIX "C", N70	TON	9919	4965			13	4941
40603345	HOT-MIX ASPHALT SURFACE COURSE, MIX "D", N90	TON	4198	357	2017	1824		
40800050	INCIDENTAL HOT-MIX ASPHALT SURFACING	TON	281	118				163
44000151	HOT-MIX ASPHALT SURFACE REMOVAL, 1/2"	SQ YD	114691	55989				58702
44000155	HOT-MIX ASPHALT SURFACE REMOVAL, 1 1/2"	SQ YD	52344	6616	24016	21712		
44000158	HOT-MIX ASPHALT SURFACE REMOVAL, 2 1/4"	SQ YD	152				152	
44201803	CLASS D PATCHES, TYPE II, 13 INCH	SQ YD	2527	757	465			1305
44201807	CLASS D PATCHES, TYPE III, 13 INCH	SQ YD	496	84	108			304
44201809	CLASS D PATCHES, TYPE IV, 13 INCH	SQ YD	1087	27	773			287
48101200	AGGREGATE SHOULDERS, TYPE B	TON	5197	2475				2722
48203100	HOT-MIX ASPHALT SHOULDERS	TON	3801	1811				1990
63200310	GUARDRAIL REMOVAL	FOOT	125					125
67000500	ENGINEER'S FIELD OFFICE, TYPE B	CAL MO	3	3				
67100100	MOBILIZATION	L SUM	1	1				
70100450	TRAFFIC CONTROL AND PROTECTION, STANDARD 701201	L SUM	1	0.4	0.1	0.07	0.02	0.41

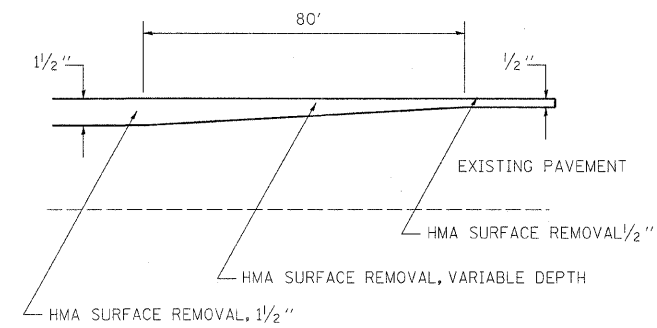
80% FED.
20% STATE

SUMMARY OF QUANTITIES			TOTAL QUANTITIES	CONSTRUCTION TYPE CODE				
CODE NO	ITEM	UNIT		COLES COUNTY				
				FAP 325 RURAL IL 16 0005	FAP 325 URBAN IL 16 0005	FAP 325 URBAN US 45 0005	FAP 325 RURAL 0014	FAP 325 MOULTRIE RURAL IL 16 0005
70100460	TRAFFIC CONTROL AND PROTECTION, STANDARD 701306	L SUM	1	0.4	0.1	0.07	0.02	0.41
70102620	TRAFFIC CONTROL AND PROTECTION, STANDARD 701501	L SUM	1		0.62	0.38		
70102622	TRAFFIC CONTROL AND PROTECTION, STANDARD 701502	L SUM	1		0.62	0.38		
70102632	TRAFFIC CONTROL AND PROTECTION, STANDARD 701602	L SUM	1		0.62	0.38		
70102635	TRAFFIC CONTROL AND PROTECTION, STANDARD 701701	L SUM	1			1		
70300100	SHORT-TERM PAVEMENT MARKING	FOOT	20300	8640	1776	1068		8816
70300220	TEMPORARY PAVEMENT MARKING - LINE 4"	FOOT	71368	13831				57537
70301000	WORK ZONE PAVEMENT MARKING REMOVAL	SQ FT	2256	960	197	119		980
78000100	THERMOPLASTIC PAVEMENT MARKING - LETTERS AND SYMBOLS	SQ FT	644.2	124.8	334.4	185		
78000200	THERMOPLASTIC PAVEMENT MARKING - LINE 4"	FOOT	28147		18333	9814		
78000400	THERMOPLASTIC PAVEMENT MARKING - LINE 6"	FOOT	770		650	120		
78000600	THERMOPLASTIC PAVEMENT MARKING - LINE 12"	FOOT	1210	920	240	50		
78000650	THERMOPLASTIC PAVEMENT MARKING - LINE 24"	FOOT	444		120	324		
78001110	PAINT PAVEMENT MARKING - LINE 4"	FOOT	71368	13831				57537
78100100	RAISED REFLECTIVE PAVEMENT MARKER	EACH	1201	581	220	120		280
88500100	INDUCTIVE LOOP DETECTOR	EACH	52			52		
88600100	DETECTOR LOOP, TYPE I	FOOT	4186			4186		
X4060995	TEMPORARY RAMP, SPECIAL	SQ YD	1200		725	475		
X4401198	HOT-MIX ASPHALT SURFACE REMOVAL, VARIABLE DEPTH	SQ YD	746	746				
Z0021907	SILICONE JOINT SEALER, 1.75"	FOOT	45				45	
Z0048665	RAILROAD PROTECTIVE LIABILITY INSURANCE	L SUM	1		1			



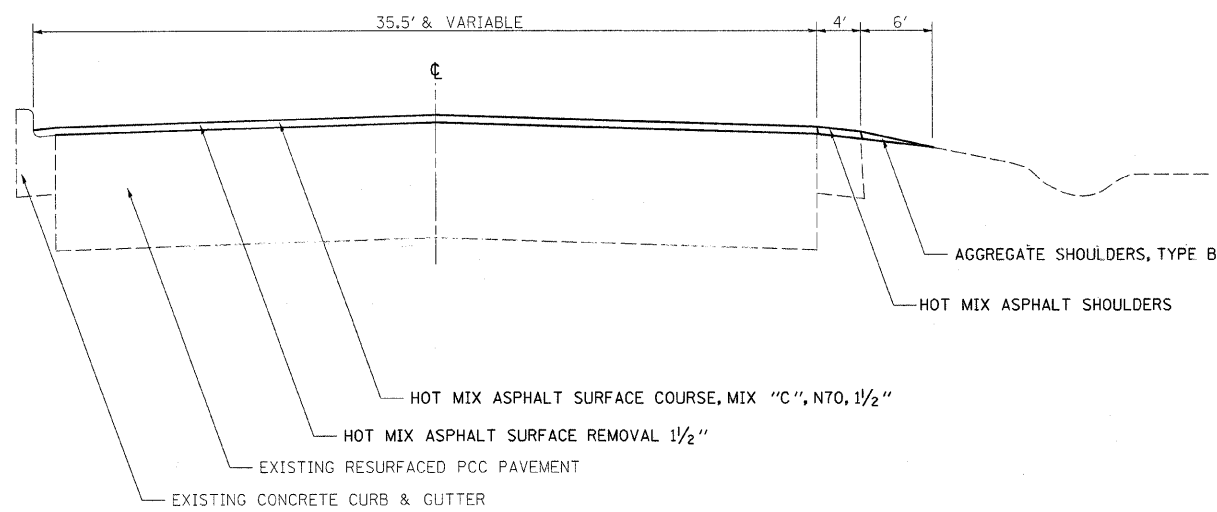
STA 26+63 TO STA 85+96
STA 989+25 TO STA 1000+02

HOT MIX ASPHALT SURFACE COURSE, MIX "D", N90, 1/2"
HOT MIX ASPHALT SURFACE REMOVAL 1/2"
EXISTING RESURFACED PCC PAVEMENT
EXISTING CONCRETE CURB & GUTTER



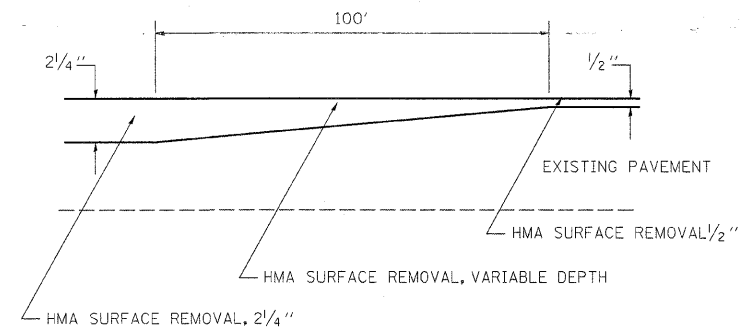
TRANSITION DETAIL
STA 8+90 TO STA 9+70

1/2"
80'
1/2"
EXISTING PAVEMENT
HMA SURFACE REMOVAL 1/2"
HMA SURFACE REMOVAL, VARIABLE DEPTH
HMA SURFACE REMOVAL, 1/2"



STA 1000+02 TO STA 1002+91
STA 2+91 TO STA 8+90

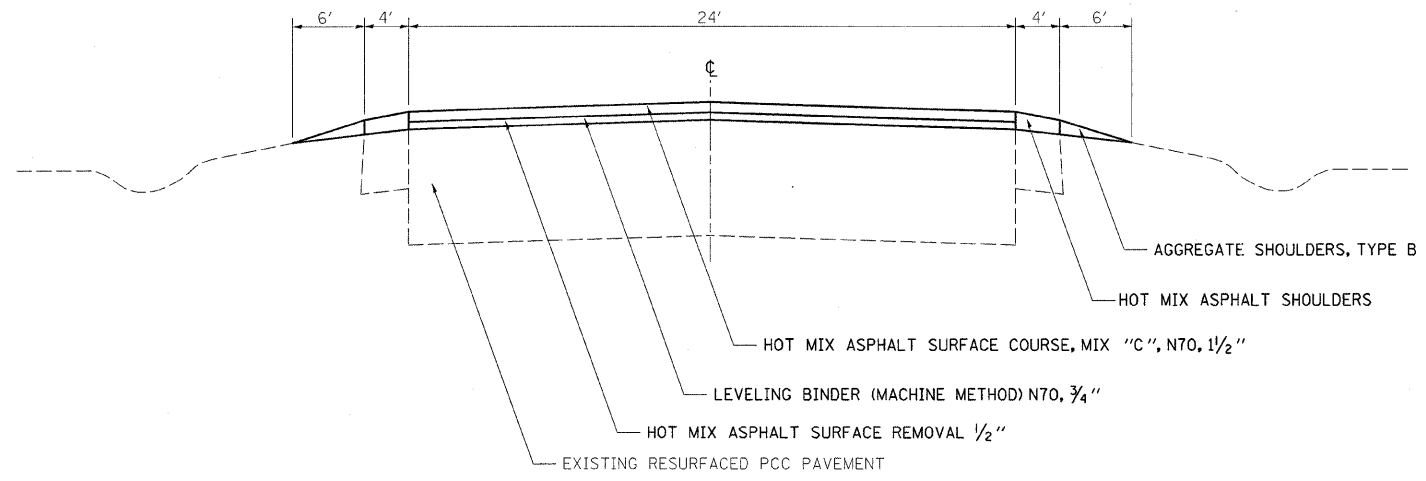
HOT MIX ASPHALT SURFACE COURSE, MIX "C", N70, 1/2"
HOT MIX ASPHALT SURFACE REMOVAL 1/2"
EXISTING RESURFACED PCC PAVEMENT
EXISTING CONCRETE CURB & GUTTER
HOT MIX ASPHALT SHOULDERS
AGGREGATE SHOULDERS, TYPE B



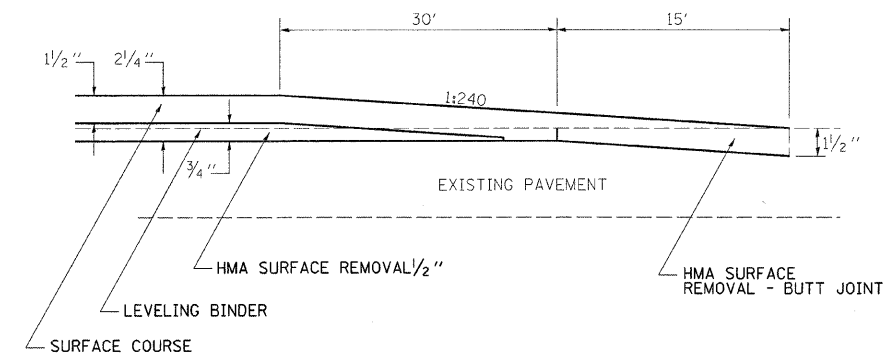
TRANSITION DETAIL (AT BRIDGE)
STA 108+94 TO STA 109+94
STA 110+26 TO STA 111+26

2/4"
100'
1/2"
EXISTING PAVEMENT
HMA SURFACE REMOVAL 1/2"
HMA SURFACE REMOVAL, VARIABLE DEPTH
HMA SURFACE REMOVAL, 2/4"

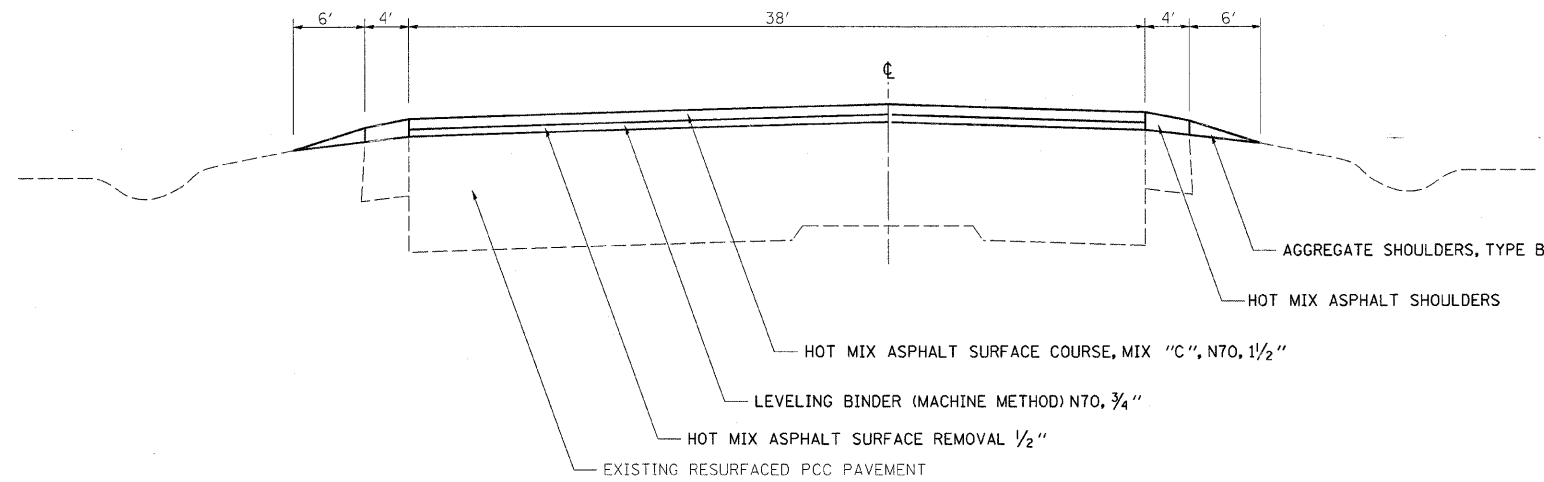
FILE NAME =	USER NAME = swartzrk	DESIGNED -	REVISED -	STATE OF ILLINOIS DEPARTMENT OF TRANSPORTATION	TYPICALS SECTION (8,9,10)RS-3			F.A.P. RTE.	SECTION	COUNTY	TOTAL SHEETS	SHEET NO.	
c:\pwork\pwork\swartzrk\2024046\077	259-shr-typicals.dgn	DRAWN -	REVISED -		SCALE: NA	SHEET NO. 1 OF 3 SHEETS	STA.	TO STA.	325	.	.	24	5
	PLOT SCALE = 50.0000' / 1" =	CHECKED -	REVISED -										
	PLOT DATE = 10/21/2011	DATE -	REVISED -										



STA 9+70 TO STA 39+75
 STA 68+15 TO STA 109+94
 STA 111+26 TO STA 425+55

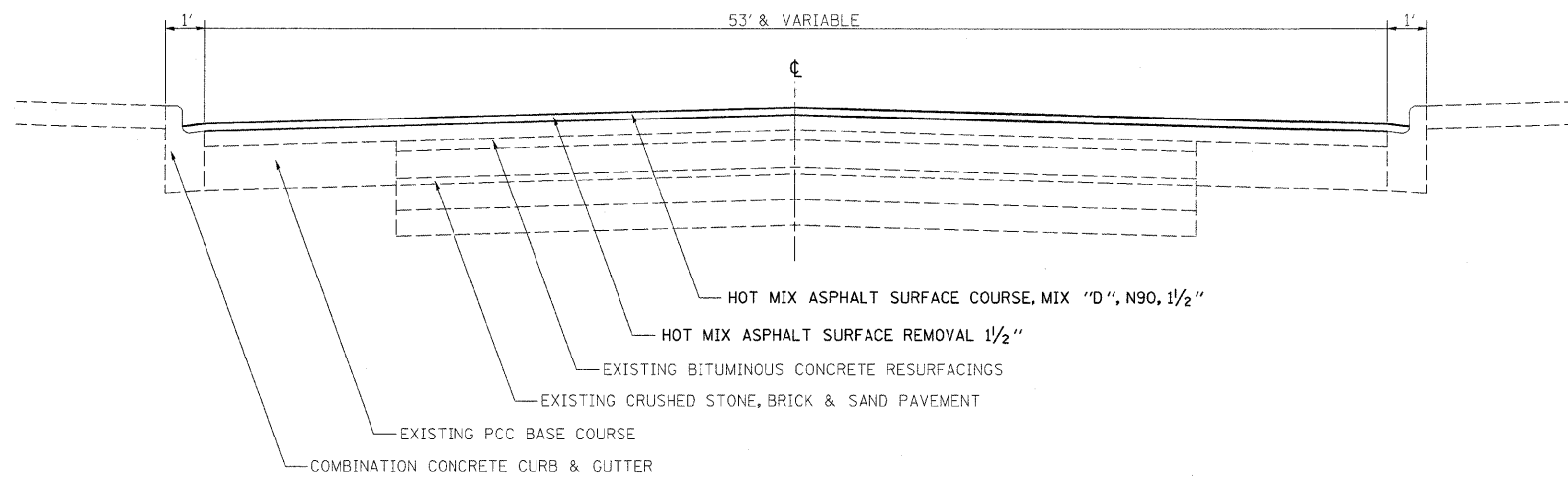


MILLING DETAILS
 STA 425+55 TO STA 426+00



STA 39+75 TO STA 68+15

FILE NAME = c:\pw_work\pwsdot\swartzw\d0240046\077	USER NAME = swartzw	DESIGNED -	REVISED -	STATE OF ILLINOIS DEPARTMENT OF TRANSPORTATION	TYPICALS SECTION (8,9,10)RS-3		F.A.P. RTE.	SECTION	COUNTY	TOTAL SHEETS	SHEET NO.
	PLOT SCALE = 50.0000' / 1"	DRAWN -	REVISED -		325	.	.	24	6		
	PLOT DATE = 10/21/2011	CHECKED -	REVISED -		SCALE: NA SHEET NO. 2 OF 3 SHEETS STA. TO STA.		ILLINOIS FED. AID PROJECT		CONTRACT NO. 74259		
	DATE -	REVISED -	(8,9,10)RS-3, (19)RS-2		Coles, Moultrie						



STA 2+63 TO STA 30+41
 STA 1750+23 TO STA 1750+81
 STA 104+00 TO STA 111+45

FILE NAME =	USER NAME = administrator	DESIGNED -	REVISED -	STATE OF ILLINOIS DEPARTMENT OF TRANSPORTATION	TYPICAL SECTION (19Z)RS-2		F.A.P. RTE.	SECTION	COUNTY	TOTAL SHEETS	SHEET NO.	
c:\pwork\pwork\awartzr\10242046\077	269-shr-typicals.dgn	DRAWN -	REVISED -		SCALE: NA	SHEET NO. 3 OF 3 SHEETS	STA.	TO STA.	325	*	24	7
	PLOT SCALE = 50.0000 1 / in.	CHECKED -	REVISED -		CONTRACT NO. 74259							
	PLOT DATE = 10/21/2011	DATE -	REVISED -		ILLINOIS FED. AID PROJECT							

RESURFACING SCHEDULE SECTION (8, 9, 10)RS-3															
STATION TO STATION			LENGTH	PAVEMENT WIDTH	AREA	BITUMINOUS MATERIALS (PRIME COAT)	AGGREGATE (PRIME COAT)	LEVELING BINDER (MACHINE METHOD), INT	HOT-MIX ASPHALT SURFACE COURSE, MIX "D", N90	HOT-MIX ASPHALT SURFACE REMOVAL, 1/2"	HOT-MIX ASPHALT SURFACE REMOVAL, 1 1/2"	HOT-MIX ASPHALT SHOULDERS	AGGREGATE SHOULDERS, TYPE B	HOT-MIX ASPHALT SURFACE COURSE, MIX "C", INT	TEMPORARY RAMP
			FEET	FEET	SQ YD	GALLON	TON	TON	TON	SQ YD	SQ YD	TON	TON	TON	SQ YD
80+96.00	TO	85+96.00	500.0	33	1806	181	4		152		1806				28.9
71+81.00	TO	80+96.00	915.0	40	4067	407	8		342		4067				
69+66.00	TO	71+81.00	215.0	49	1171	117	2		98		1171				
58+75.00	TO	69+66.00	1091.0	36	4303	430	9		362		4303				
26+63.00	TO	58+75.00	3212.0	36	12670	1267	25		1064		12670				
26+63.00	=	989+25.00	Station Equation												
989+25.00	TO	1000+02.00	1077.0	36	4248	425	9		357		4248				
1000+02.00	TO	1002+91.32	289.3	24	772	90	2				772	13	18	65	
1002+91.32	=	2+91.32	Station Equation												
2+91.32	TO	8+90.00	598.7	24	1596	186	4				1596	27	37	134	
8+90.00	TO	9+70.00	80.0	24	213	28	1	9				7	10	18	
9+70.00	TO	39+75.00	3005.0	24	8013	1068	21	337		8013		271	371	673	
39+75.00	TO	68+15.00	2840.0	38	11991	1452	29	504		11991		256	350	1007	
68+15.00	TO	108+93.68	4078.7	24	10876	1450	29	457		10876		368	503	914	42.7
108+93.68	TO	109+93.68	100.0	24	267	36	1	11				9	12	22	
109+93.68	TO	110+26.36	32.7												
110+26.36	TO	111+26.36	100.0	24	267	36	1	11				9	12	22	42.7
111+26.36	TO	205+42.00	9415.6	24	25108	3348	67	1055		25108		850	1162	2109	
205+42.00	TO	425+55.00	22013.0	24	58701	7827	157	2466		58701		1987	2716	4931	
425+55.00	TO	426+00.00	45.0	24	120	16	0	5				4	6	10	21.3
			49608		146189	18363	367	4854	2374	114691	30632	3801	5197	9906	136.0

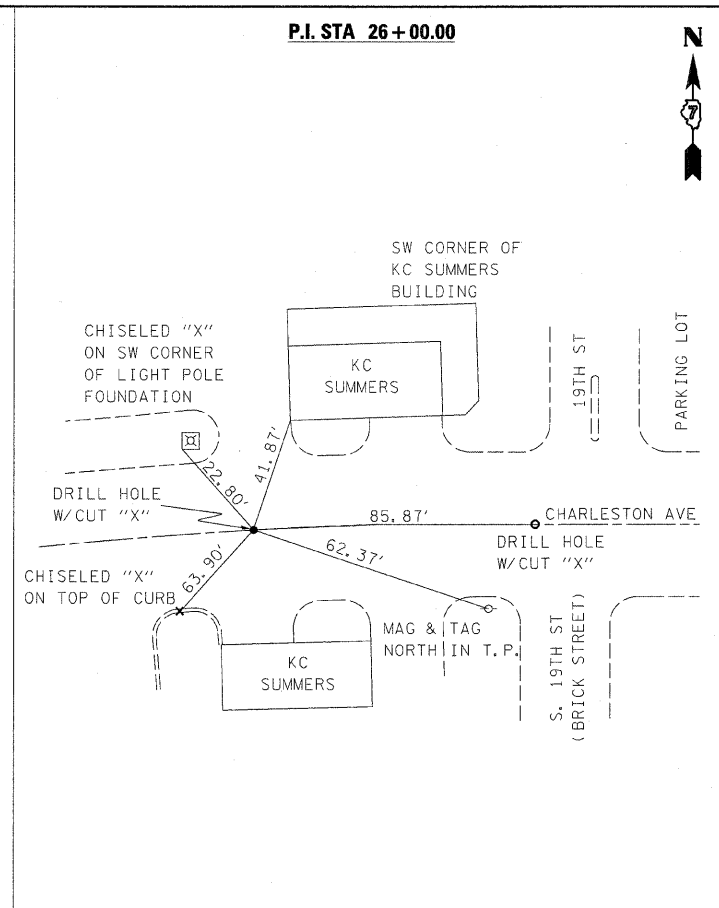
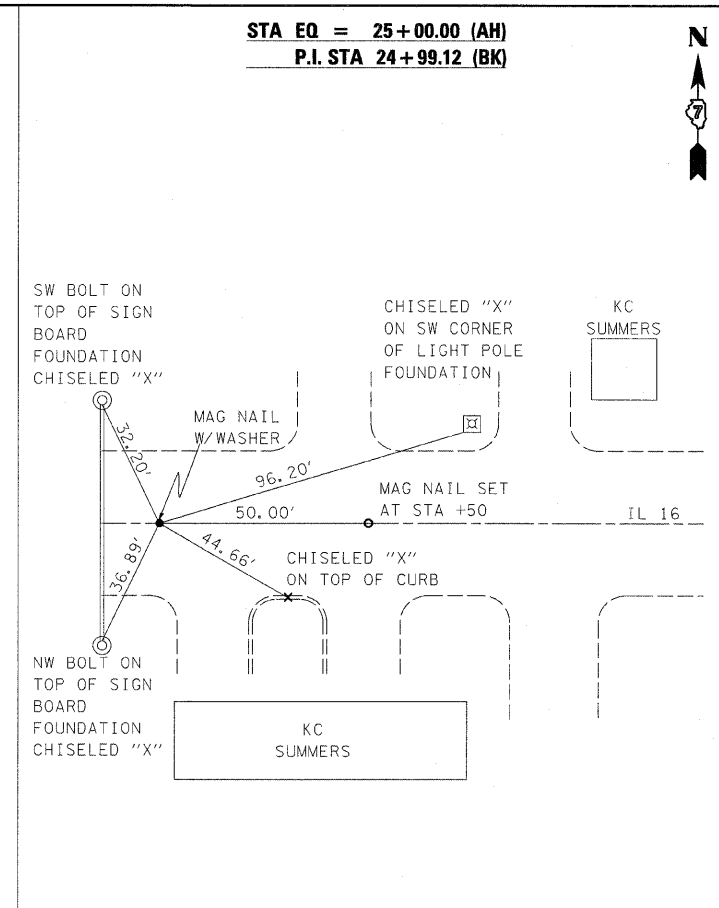
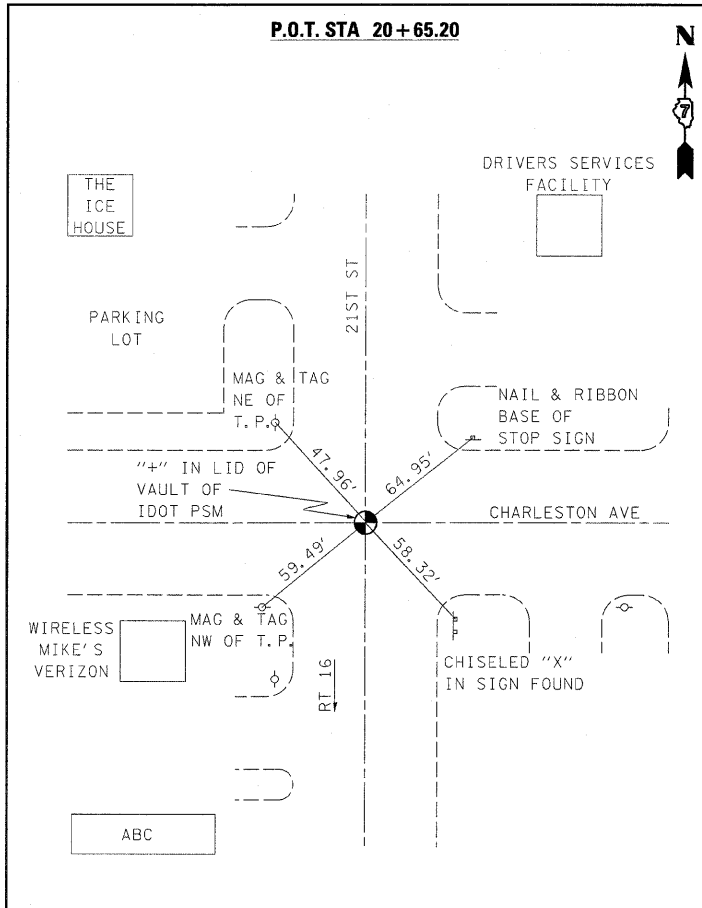
Urban Limits

Coles/Moultrie

RESURFACING SCHEDULE SECTION (19Z)RS-2

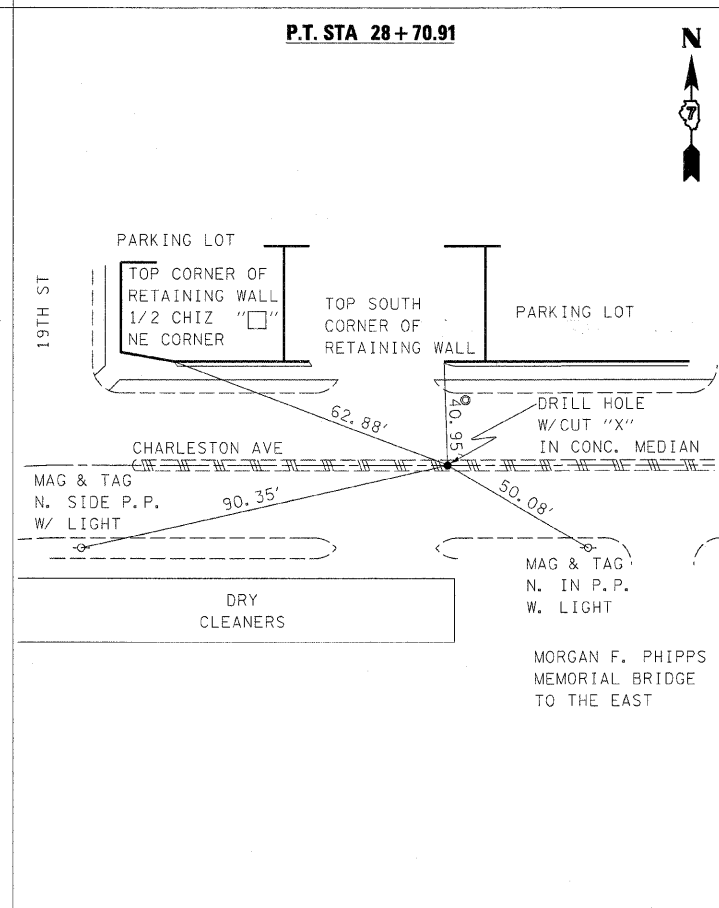
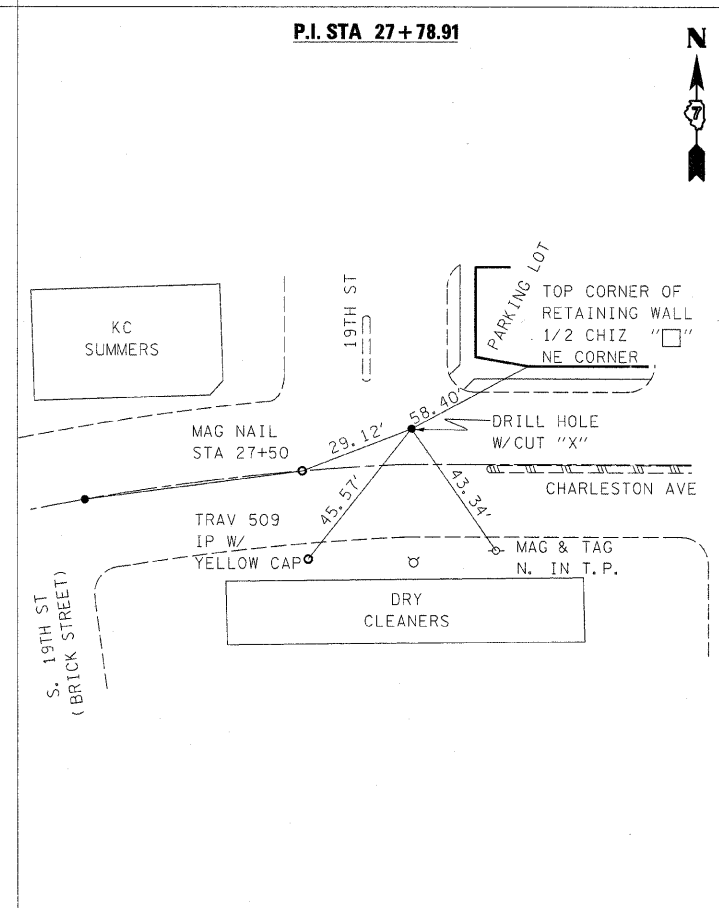
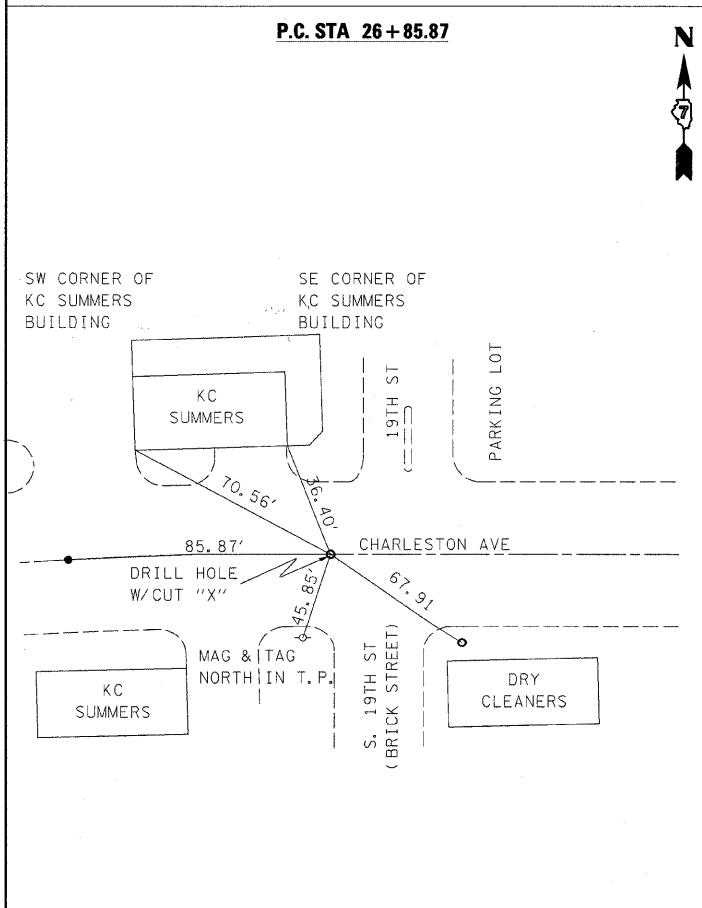
STATION TO STATION	LENGTH FOOT	AVERAGE PAVEMENT WIDTH FOOT	AREA SQ YD	HOT-MIX ASPHALT SURFACE REMOVAL, 1 1/2" SQ YD	BITUMINOUS MATERIALS (PRIME COAT) GALLON	AGGREGATE (PRIME COAT) TON	HOT-MIX ASPHALT SURFACE COURSE, MIX "D", N90 TON	TEMPORARY RAMP SQ YD
2+63.00 TO 3+41.00	78.0	53.0	459.3	459.3	45.9	0.9	38.6	29.4
3+41.00 TO 4+54.00	113.0	59.0	740.8	740.8	74.1	1.5	62.2	0.0
4+54.00 TO 5+54.00	100.0	63.0	700.0	700.0	70.0	1.4	58.8	0.0
5+54.00 TO 9+10.00	356.0	66.0	2610.7	2610.7	261.1	5.2	219.3	0.0
9+10.00 TO 30+03.00	2093.0	55.0	12790.6	12790.6	1279.1	25.6	1074.4	0.0
30+03.00 TO 30+40.50	37.5	55.0	229.2	229.2	22.9	0.5	19.3	30.6
1750+22.50 TO 1750+81.00	58.5	36.0	234.0	234.0	23.4	0.5	19.7	40.0
104+00.00 TO 111+44.87	744.9	45.0	3724.4	3724.4	372.4	7.4	312.8	50.0
Richmond East Leg of Intersection	35.0	57.5	223.6	223.6	22.4	0.4	18.8	31.9
TOTALS	3616.0		21712.0	21712.0	2171.0	43.0	1824.0	182.0

FILE NAME =	USER NAME = swartzw	DESIGNED -	REVISED -	STATE OF ILLINOIS DEPARTMENT OF TRANSPORTATION	RESURFACING SCHEDULE SECTION (19Z)RS-2	F.A.P. RTE.	SECTION	COUNTY	TOTAL SHEETS	SHEET NO.
ca:\pwork\pwork\swartzw\00240046\077	259-sht-schedule.dgn	DRAWN -	REVISED -			325	.	.	24	9
PLOT SCALE = 50.0000 1 / in.	CHECKED -	REVISED -	CONTRACT NO. 74259							
PLOT DATE = 10/21/2011	DATE -	REVISED -	ILLINOIS FED. AID PROJECT							
SCALE: NA		SHEET NO. 2 OF 2 SHEETS		STA. TO STA.		ILLINOIS FED. AID PROJECT		* (8,9,10)RS-3, (19Z)RS-2		



PROTECTING OR RESETTING SURVEY MARKERS

Station	Offset	Description
+/- 27+78.91	0	PI Found In Drill Hole with cut "X" In PCC Pavement
+/- 26+85.87	0	PC Found In Drill Hole with cut "X" In PCC Pavement
+/- 20+65.20	0	Vault on center line to center line of Charleston Ave & 21st St.
45+30	0	RR Spike Flush with dipple



FILE NAME =
c:\pwork\p\dot\swartzr\0240246\077

USER NAME = swartzr
259-shs-ATB.dgn
PLOT SCALE = 50.0000' / 1" =
PLOT DATE = 10/21/2011

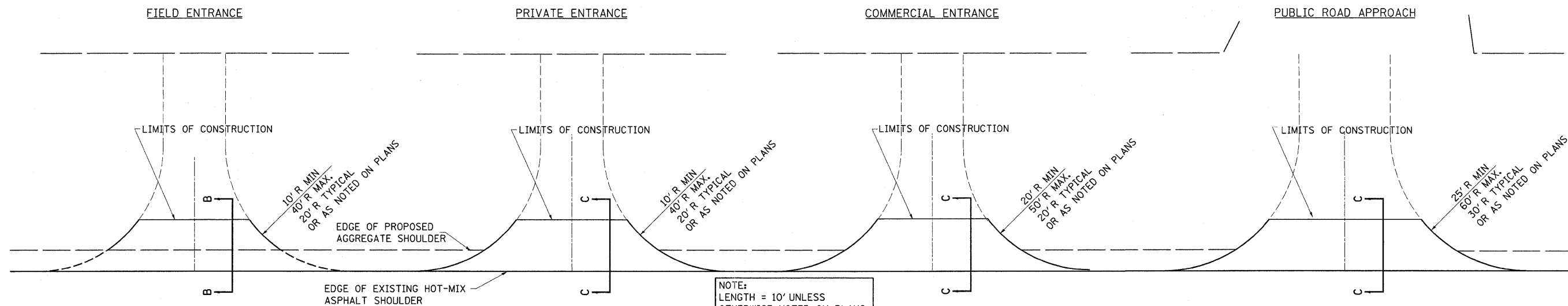
DESIGNED -
DRAWN -
CHECKED -
DATE -

REVISED -
REVISED -
REVISED -
REVISED -

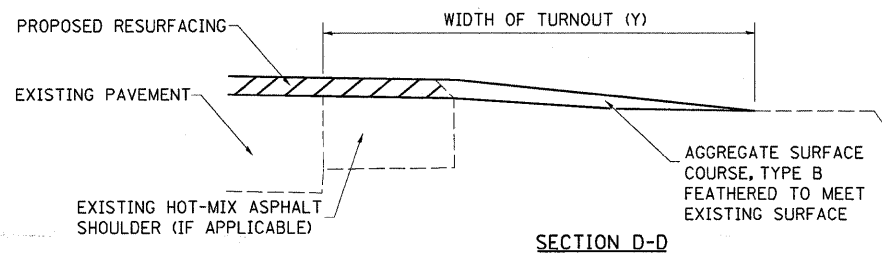
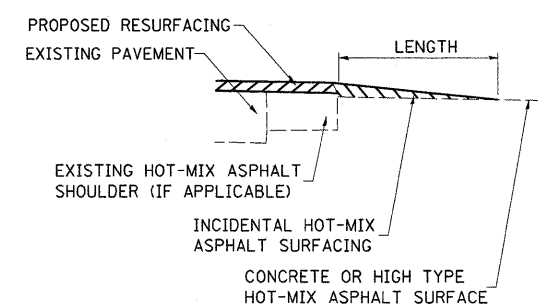
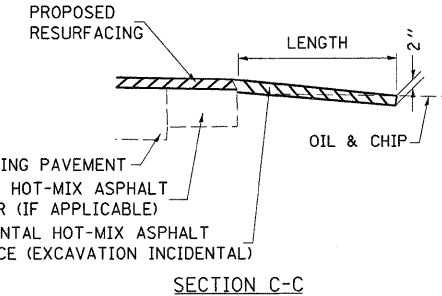
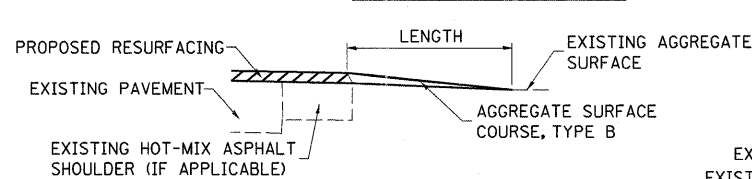
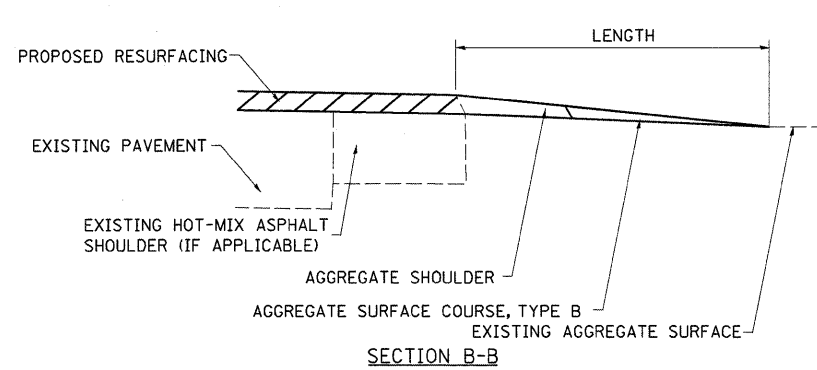
**STATE OF ILLINOIS
DEPARTMENT OF TRANSPORTATION**

SURVEY TIES
SCALE: NA SHEET NO. 1 OF 1 SHEETS STA. TO STA.

F.A.P. RTE.	SECTION	COUNTY	TOTAL SHEETS	SHEET NO.
325			24	10
CONTRACT NO. 74259				



NOTE:
LENGTH = 10' UNLESS
OTHERWISE NOTED ON PLANS.



TYPICAL SECTION AT MAILBOX TURNOUT

NOTE: SEE STANDARD 406201 FOR MAILBOX TURNOUT DETAILS

NOTES

THE COST OF THE ASPHALT MATERIALS, AND AGGREGATE (PRIME COAT) FOR ENTRANCES AND PUBLIC ROADS AND APPROACHES SHALL BE INCLUDED IN THE PAY ITEM INCIDENTAL HOT-MIX ASPHALT SURFACING.

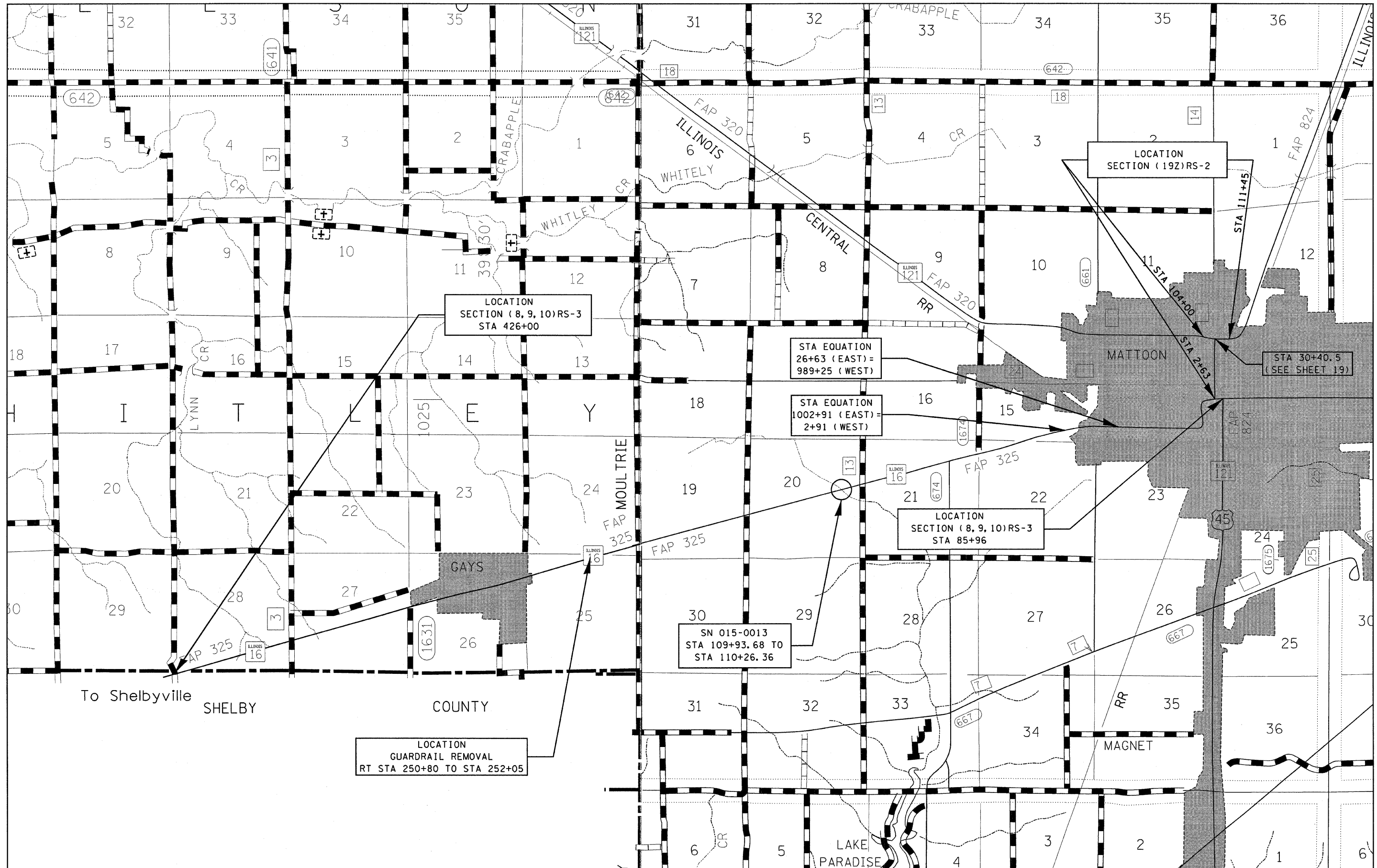
THE COST OF EXCAVATION IS INCLUDED IN THE PAY ITEM INCIDENTAL HOT-MIX ASPHALT SURFACING.

IF THERE IS NOT EXISTING HOT-MIX ASPHALT SHOULDER THEN THE ENTRANCE TAPER STARTS AT THE EDGE OF EXISTING PAVEMENT.

THE COST OF THE BITUMINOUS MATERIALS AND AGGREGATE (PRIME COAT) FOR ENTRANCES AND PUBLIC ROAD APPROACHES SHALL BE INCLUDED IN THE PAY ITEM INCIDENTAL HOT-MIX ASPHALT SURFACING.

SIDE	STATION	TYPE	INCIDENTAL HOT-MIX ASPHALT SURFACING		AGGREGATE SURFACE COURSE, TYPE B	SIDE	STATION	TYPE	INCIDENTAL HOT-MIX ASPHALT SURFACING		AGGREGATE SURFACE COURSE, TYPE B	SIDE	STATION	TYPE	INCIDENTAL HOT-MIX ASPHALT SURFACING		AGGREGATE SURFACE COURSE, TYPE B	SIDE	STATION	TYPE	INCIDENTAL HOT-MIX ASPHALT SURFACING		
			TON	TON					TON	TON					TON	TON					TON	TON	TON
LT	419+56	FE	2.6			RT	285+47	PRA	3.4			LT	268+71	PE/MBT	3.7			LT	142+50	FE	2.5		
LT	397+90	PE	3.5			LT	285+32	PE	2.5			RT	266+85	PE	1.6			LT	138+86	MBT	2.8		
RT	397+90	PE	2.6			LT	284+73	PE	2.4			LT	262+58	PE	2			RT	135+90	CE	6.2		2.5
LT	370+68	PRA	4.8			RT	283+42	CE	2.8			LT	260+57	PE/MBT	6.5			RT	134+63	FE	2		
LT	357+19	FE	1.8			RT	282+59	CE	3.6			RT	260+57	PRA	5.5			LT	122+33	FE	2.6		
RT	356+27	FE	1.8			LT	280+97	CE	2.3			LT	249+31	PE	3.4			LT	115+67	CE	3		
LT	347+46	PE	2.4			LT	279+88	CE	2.3			LT	249+77	PE/MBT	6.7			LT	113+41	FE	2		
RT	347+46	MBT	2.4			LT	279+37	CE	3.3			LT	243+50	PE/MBT	3.9			RT	99+88	PRA	4.1		
LT	346+73	PE	1.8			RT	278+59	PRA	4.8			RT	242+79	FE	1.8			RT	99+88	PRA	6.8		
RT	343+80	CE	6.1			LT	278+24	PE	2.9			LT	241+77	CE	4.3			LT	98+66	FE	2		
LT	329+21	FE	2.1			RT	277+82	CE	1.6			LT	221+82	FE	2.2			LT	72+92	FE	1.9		
LT	315+14	PRA	4.8			RT	276+77	CE	3.4			LT	218+24	FE	2.8			RT	70+49	CE	3.5		
LT	301+84	FE	2.4			RT	274+70	PRA	4.4			RT	218+24	CE	2.8			LT	59+10	PRA	14.7		
LT	299+97	FE	3.4			LT	274+56	PRA	3.7			LT	205+60	PRA	4.6			LT	52+49	PE	2.2		
LT	298+52	FE	3.5			RT	272+50	PE	1.8			RT	205+32	PRA	5.5			LT	48+40	FE	2		
LT	293+14	PE		7.0		RT	271+87	PE	1.4			LT	189+20	FE	2.5			LT	45+30	FE	1.8		
LT	288+39	FE	2.1			LT	271+87	MBT	2.4			LT	173+25	FE	2			RT	45+30	PRA	5.6		
RT	287+82	PE	1.8			RT	271+28	PE	3.1			RT	168+29	FE	1.6			LT	32+26	FE	2.5		
RT	287+03	PE	1.8			LT	270+55	MBT	2.8			LT	154+86	PRA	4.6			LT	31+40	FE	1.9		
LT	286+36	PE	1.9			RT	270+36	PE	2			RT	154+74	PRA	4.3			RT	23+18	PRA	7.6		
																					Total	281	10
																					Coles	118	3
																					Moult	162	7

FE=FIELD ENTRANCE PRA - PUBLIC ROAD APPROACH
PE=PRIVATE ENTRANCE MBT - MAILBOX TURNOUT
CE=COMMERCIAL ENTRANCE



FILE NAME =
 c:\pw_work\pawdot\swartzr\ld240046\077

USER NAME = swartzr
 259-shr-cover.dgn
 PLOT SCALE = 50.0000 1/1 in.
 PLOT DATE = 10/21/2011

DESIGNED -
 DRAWN -
 CHECKED -
 DATE -

REVISED -
 REVISED -
 REVISED -
 REVISED -

**STATE OF ILLINOIS
 DEPARTMENT OF TRANSPORTATION**

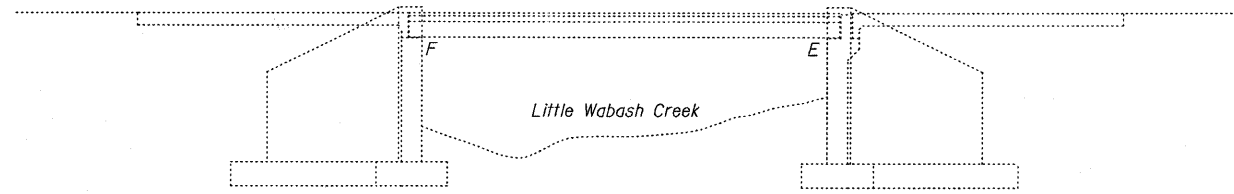
LOCATION MAP

SCALE: NA SHEET NO. 1 OF 1 SHEETS STA. TO STA.

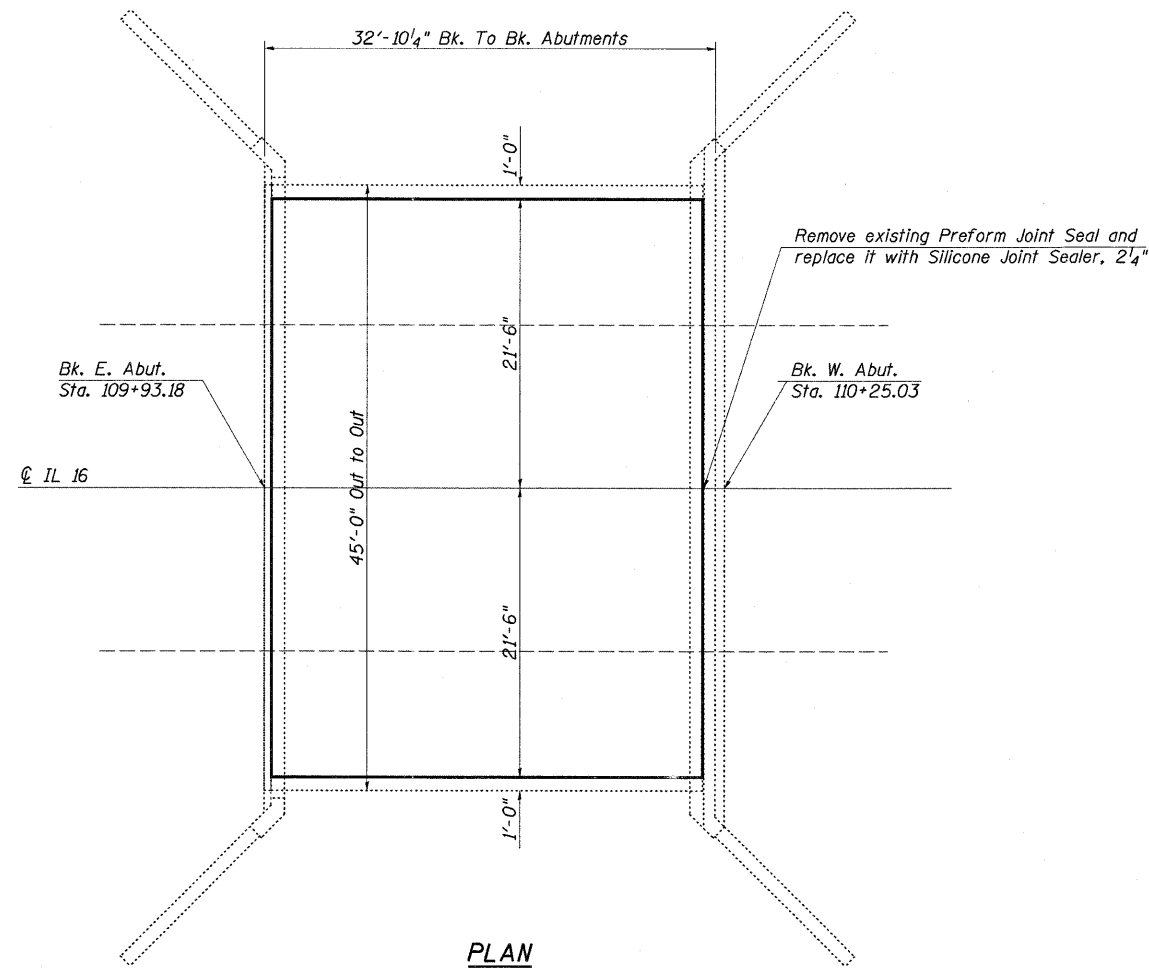
F.A.P. RTE.	SECTION	COUNTY	TOTAL SHEETS	SHEET NO.
325			24	12

CONTRACT NO. 74259

The existing single span precast reinforced channel deck beam structure was constructed in 1975 as FA Route 17 section 8BR at Sta. 110+08. SN. 015-0013 carries FAP 325 (IL 16) over the Little Wabash Creek. The proposed project consists of a new silicone joint sealer and a new HMA wearing surface.



ELEVATION



PLAN



David Carl Ruzey 12/7/11
Expires 11/30/12

FILE NAME =	USER NAME = administrator	DESIGNED - KLB	REVISED -	STATE OF ILLINOIS DEPARTMENT OF TRANSPORTATION	GENERAL PLAN & ELEVATION SN. 015-0013		F.A.P. RTE. 325	SECTION •	COUNTY •	TOTAL SHEETS 24	SHEET NO. 13	
c:\pwork\puidot\swartz\10240046\077	259-sht-brplnprf-0150013.dgn	DRAWN - KLB	REVISED -		SCALE: NA	SHEET NO. 1 OF 3 SHEETS	STA. TO STA.	ILLINOIS FED. AID PROJECT		CONTRACT NO. 74259		
	PLOT SCALE = 20.0000 1/1 in.	CHECKED - MEA	REVISED -									
	PLOT DATE = 10/21/2011	DATE - 12/29/10	REVISED -									

GENERAL NOTES

Plan dimensions and details relative to existing plans are subject to nominal construction variations. The Contractor shall field verify existing dimensions and details affecting new construction and make necessary approved adjustments prior to construction or ordering of materials. Such variations shall not be cause for additional compensation for a change in scope of the work, however, the Contractor will be paid for the quantity actually furnished at the unit price bid for the work.

Price per lined foot for Silicone Joint Sealer, 1³/₄" shall include the removal of the existing joint seal.

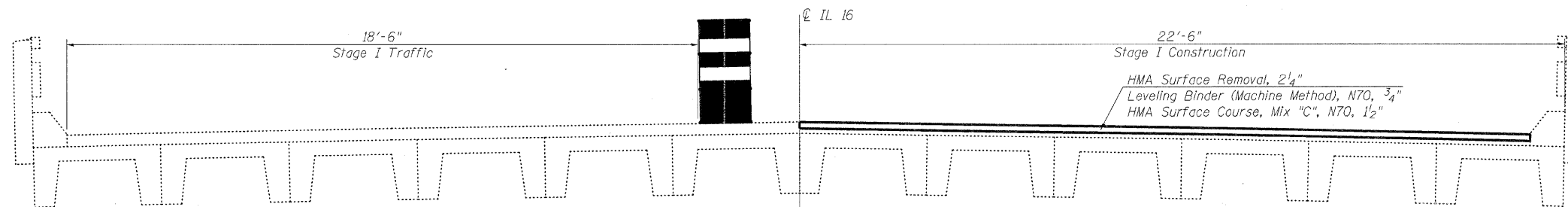
The existing hot-mix asphalt wearing surface is not known to contain asbestos.

The work and materials required for the installation of the sawed joint at the east abutment shall be included in the contract unit price for the Hot-Mix Asphalt Surface Course, Mix "C", N70.

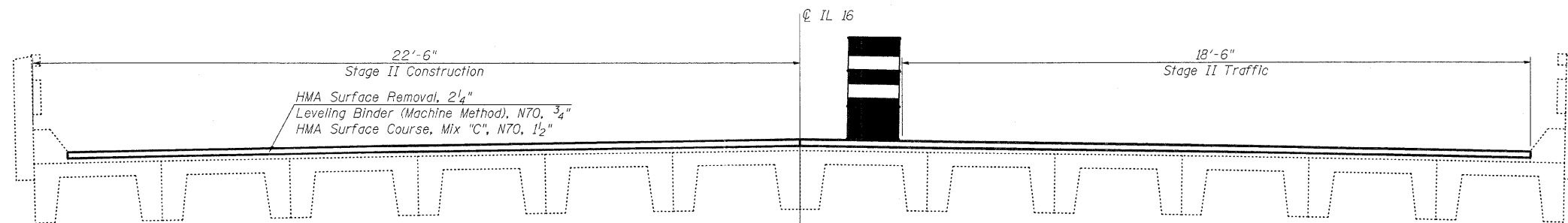
The HMA Surface Removal on and near the bridge shall be done in a manner that does not result in a greater elevation differential between open lanes than allowed by Article 701.07 of the Standard Specifications.

TOTAL BILL OF MATERIALS

ITEM	UNIT	QUANTITY
HMA Surface Removal, 2 ¹ / ₄ "	Sq Yd	152
Leveling Binder (Machine Method), N70	Ton	6.4
HMA Surface Course, Mix "C", N70	Ton	12.8
Silicone Joint Sealer, 1 ³ / ₄ "	Foot	45.0

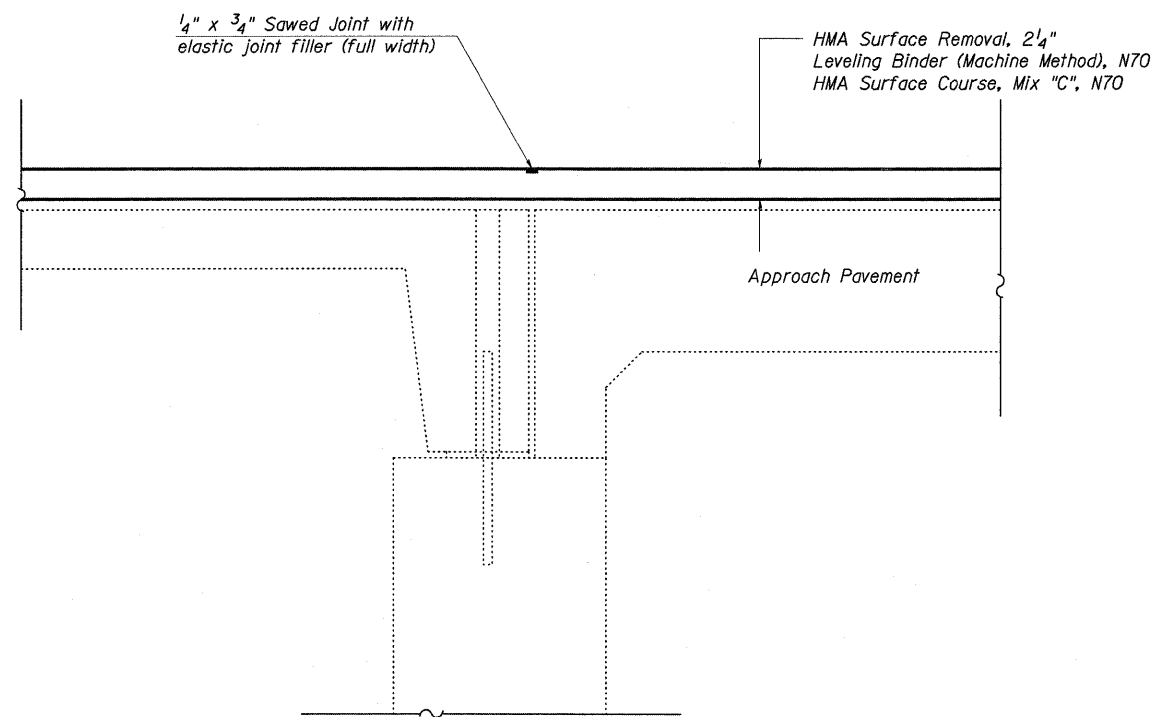


STAGE I LOOKING WEST

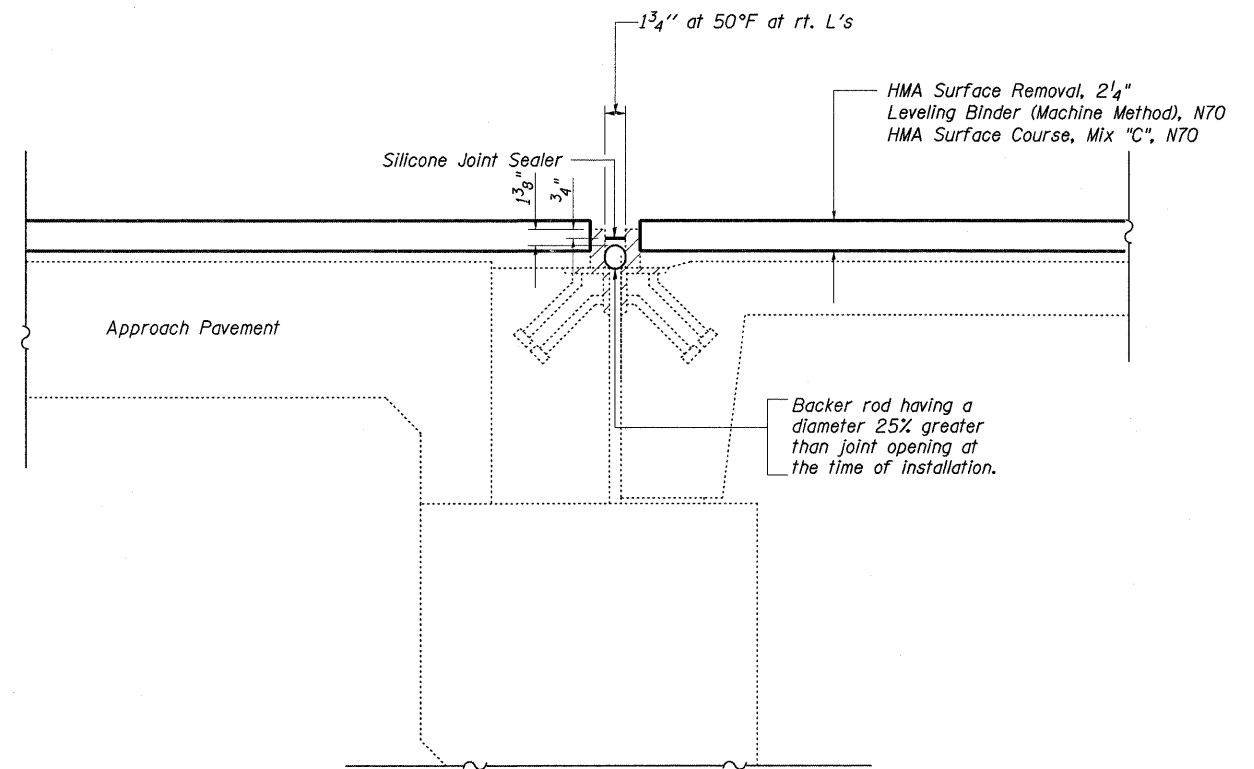


STAGE II LOOKING WEST

FILE NAME =	USER NAME = administrator	DESIGNED - KLB	REVISED -	STATE OF ILLINOIS DEPARTMENT OF TRANSPORTATION	GENERAL NOTES, BILL OF MATERIALS, & CONSTRUCTION STAGING SN. 015-0013	F.A.P. RTE. 325	SECTION	COUNTY	TOTAL SHEETS 24	SHEET NO. 14
cd:\pw\work\p\idoc\swartzw\0240046\0774259-shr-brgennote-0150013.dgn	PLOT SCALE = 28.0000' / 1"	CHECKED - MEA	REVISED -			CONTRACT NO. 74259				
	PLOT DATE = 10/21/2011	DATE - 12/29/10	REVISED -			ILLINOIS FED. AID PROJECT				
						SCALE: NA	SHEET NO. 2 OF 3 SHEETS	STA. TO STA.		



SECTION THRU EAST ABUTMENT



SILICONE JOINT SEALER DETAIL
SECTION THRU WEST ABUTMENT

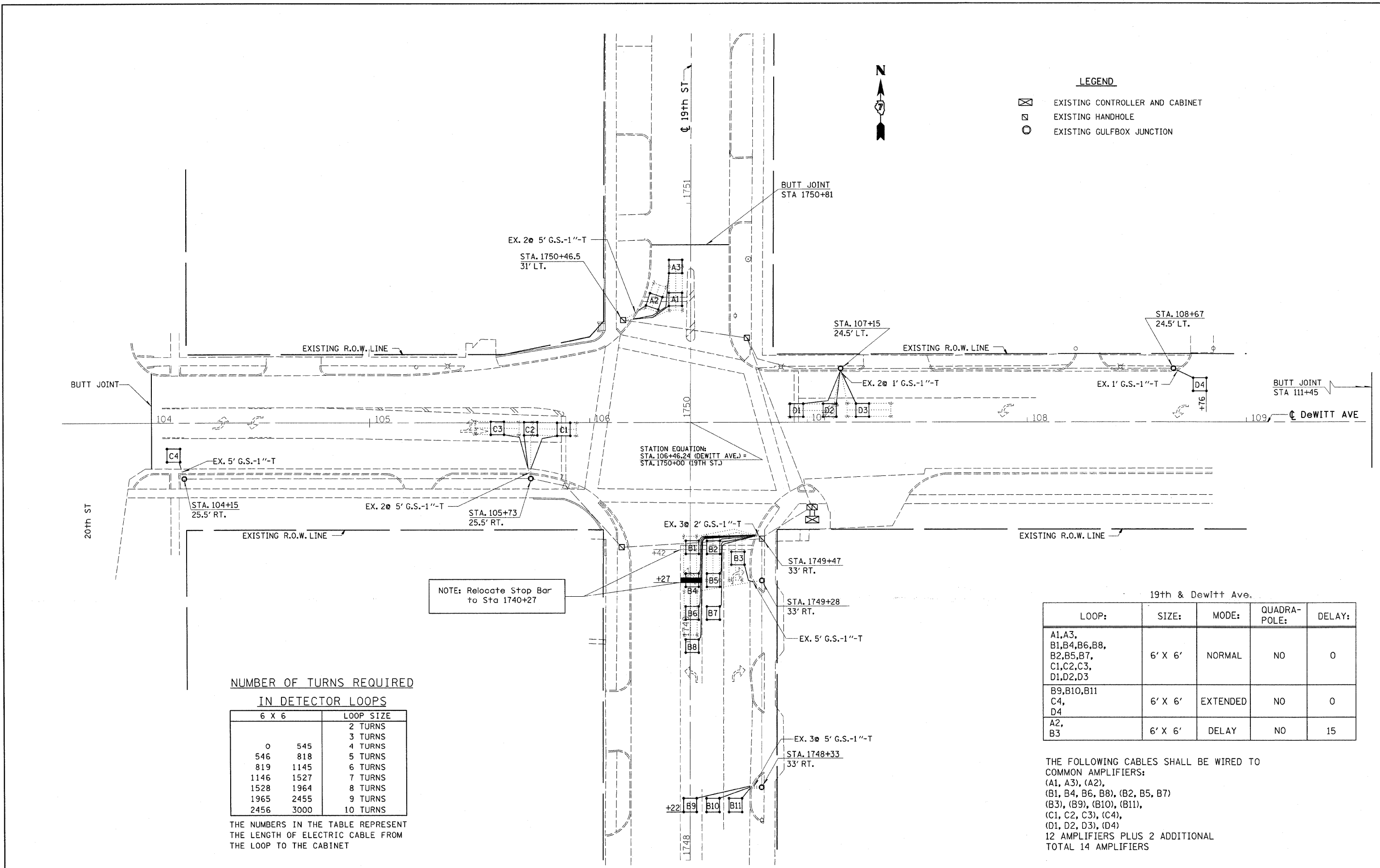
Note: Contractor should take caution as not to damage the existing joint. Damages will be repaired to the satisfaction of the engineer and at the cost of the Contractor.

FILE NAME =	USER NAME = administrator	DESIGNED -	REVISED -
ca:\pw_work\pwidot\swartzw\d0240046\077	259-sht-brdetail1-0150013.dgn	DRAWN -	REVISED -
	PLOT SCALE = 20.0000' / in.	CHECKED -	REVISED -
	PLOT DATE = 10/21/2011	DATE -	REVISED -

STATE OF ILLINOIS
DEPARTMENT OF TRANSPORTATION

FIXED JOINT & SILICONE JOINT SEALER DETAILS		
SN. 015-0013		
SCALE: NA	SHEET NO. 3 OF 3 SHEETS	STA. TO STA.

F.A.P. RTE.	SECTION	COUNTY	TOTAL SHEETS	SHEET NO.
325	.	.	24	15
ILLINOIS FED. AID PROJECT			CONTRACT NO. 74259	



LEGEND

☒	EXISTING CONTROLLER AND CABINET
□	EXISTING HANDHOLE
○	EXISTING GULFBOX JUNCTION

STATION EQUATION:
 STA. 106+46.24 (DEWITT AVE.) =
 STA. 1750+00 (19TH ST.)

NOTE: Relocate Stop Bar
 to Sta 1740+27

**NUMBER OF TURNS REQUIRED
 IN DETECTOR LOOPS**

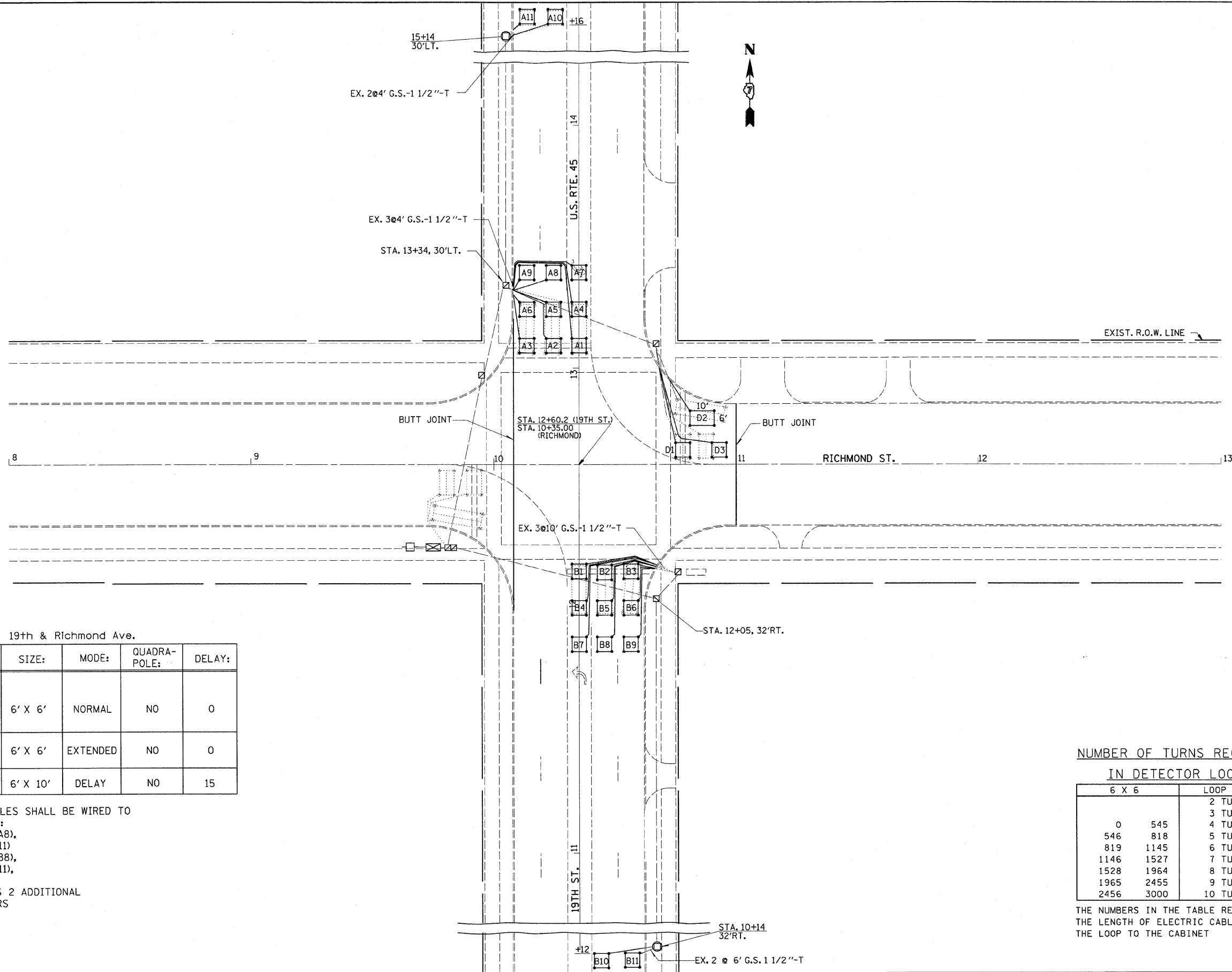
6 X 6		LOOP SIZE
		2 TURNS
0	545	3 TURNS
546	818	4 TURNS
819	1145	5 TURNS
1146	1527	6 TURNS
1528	1964	7 TURNS
1965	2455	8 TURNS
2456	3000	9 TURNS
		10 TURNS

THE NUMBERS IN THE TABLE REPRESENT
 THE LENGTH OF ELECTRIC CABLE FROM
 THE LOOP TO THE CABINET

19th & Dewitt Ave.

LOOP:	SIZE:	MODE:	QUADRA- POLE:	DELAY:
A1,A3, B1,B4,B6,B8, B2,B5,B7, C1,C2,C3, D1,D2,D3	6' X 6'	NORMAL	NO	0
B9,B10,B11 C4, D4	6' X 6'	EXTENDED	NO	0
A2, B3	6' X 6'	DELAY	NO	15

THE FOLLOWING CABLES SHALL BE WIRED TO
 COMMON AMPLIFIERS:
 (A1, A3), (A2),
 (B1, B4, B6, B8), (B2, B5, B7)
 (B3), (B9), (B10), (B11),
 (C1, C2, C3), (C4),
 (D1, D2, D3), (D4)
 12 AMPLIFIERS PLUS 2 ADDITIONAL
 TOTAL 14 AMPLIFIERS



19th & Richmond Ave.

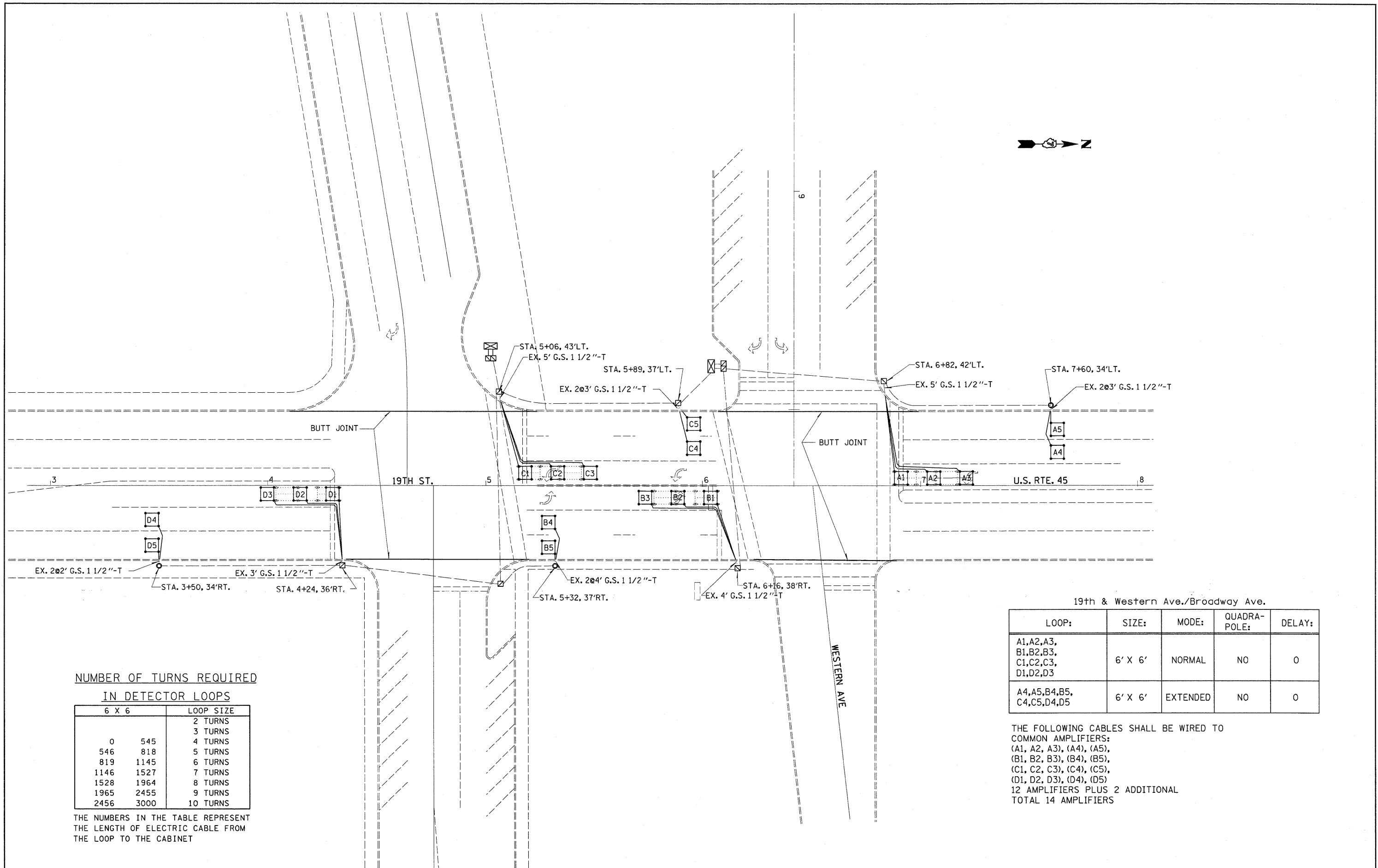
LOOP:	SIZE:	MODE:	QUADRA-POLE:	DELAY:
A1,A4,A7,A2,A5,A8, A3,A6,A9, B1,B4,B7,B2,B5,B8, B3,B6,B9, D1,D3	6' X 6'	NORMAL	NO	0
A10,A11,B10,B11	6' X 6'	EXTENDED	NO	0
D2	6' X 10'	DELAY	NO	15

THE FOLLOWING CABLES SHALL BE WIRED TO COMMON AMPLIFIERS:
 (A1, A4, A7), (A2, A5, A8),
 (A3, A6, A9), (A10), (A11)
 (B1, B4, B7), (B2, B5, B8),
 (B3, B6, B9), (B10), (B11),
 (D1, D3), (D2)
 12 AMPLIFIERS PLUS 2 ADDITIONAL
 TOTAL 14 AMPLIFIERS

NUMBER OF TURNS REQUIRED
IN DETECTOR LOOPS

6 X 6		LOOP SIZE
		2 TURNS
		3 TURNS
0	545	4 TURNS
546	818	5 TURNS
819	1145	6 TURNS
1146	1527	7 TURNS
1528	1964	8 TURNS
1965	2455	9 TURNS
2456	3000	10 TURNS

THE NUMBERS IN THE TABLE REPRESENT THE LENGTH OF ELECTRIC CABLE FROM THE LOOP TO THE CABINET



NUMBER OF TURNS REQUIRED
IN DETECTOR LOOPS

6 X 6		LOOP SIZE
		2 TURNS
		3 TURNS
0	545	4 TURNS
546	818	5 TURNS
819	1145	6 TURNS
1146	1527	7 TURNS
1528	1964	8 TURNS
1965	2455	9 TURNS
2456	3000	10 TURNS

THE NUMBERS IN THE TABLE REPRESENT THE LENGTH OF ELECTRIC CABLE FROM THE LOOP TO THE CABINET

19th & Western Ave./Broadway Ave.

LOOP:	SIZE:	MODE:	QUADRA-POLE:	DELAY:
A1,A2,A3, B1,B2,B3, C1,C2,C3, D1,D2,D3	6' X 6'	NORMAL	NO	0
A4,A5,B4,B5, C4,C5,D4,D5	6' X 6'	EXTENDED	NO	0

THE FOLLOWING CABLES SHALL BE WIRED TO COMMON AMPLIFIERS:
(A1, A2, A3), (A4), (A5),
(B1, B2, B3), (B4), (B5),
(C1, C2, C3), (C4), (C5),
(D1, D2, D3), (D4), (D5)
12 AMPLIFIERS PLUS 2 ADDITIONAL
TOTAL 14 AMPLIFIERS

FILE NAME =	USER NAME = swartzrw	DESIGNED -	REVISED -
ca:\pw\work\pwidot\swartzrw\d0240046\077	259-shi-det-loops.dgn	DRAWN -	REVISED -
	PLOT SCALE = 20.0000' / in.	CHECKED -	REVISED -
	PLOT DATE = 10/21/2011	DATE -	REVISED -

STATE OF ILLINOIS
DEPARTMENT OF TRANSPORTATION

DETECTOR LOOP LAYOUT		
19th ST & WESTERN AVE /BROADWAY AVE		
SCALE: 20	SHEET NO. 3 OF 4 SHEETS	STA. TO STA.

F.A.P. RTE.	SECTION	COUNTY	TOTAL SHEETS	SHEET NO.
320	(8,9,10)RS-2, (192)RS-2	COLES	24	18
CONTRACT NO. 74259				
[ILLINOIS] FED. AID PROJECT				

21st & Marshall Ave.

LOOP:	SIZE:	MODE:	QUADRA-POLE:	DELAY:
A1,A4,A6,A2,A5,A7, C1,C3,C5,C2,C4,C6	6' X 6'	NORMAL	NO	0
A8,C7	6' X 6'	EXTENDED	NO	0
A3	6' X 6'	DELAY	NO	15

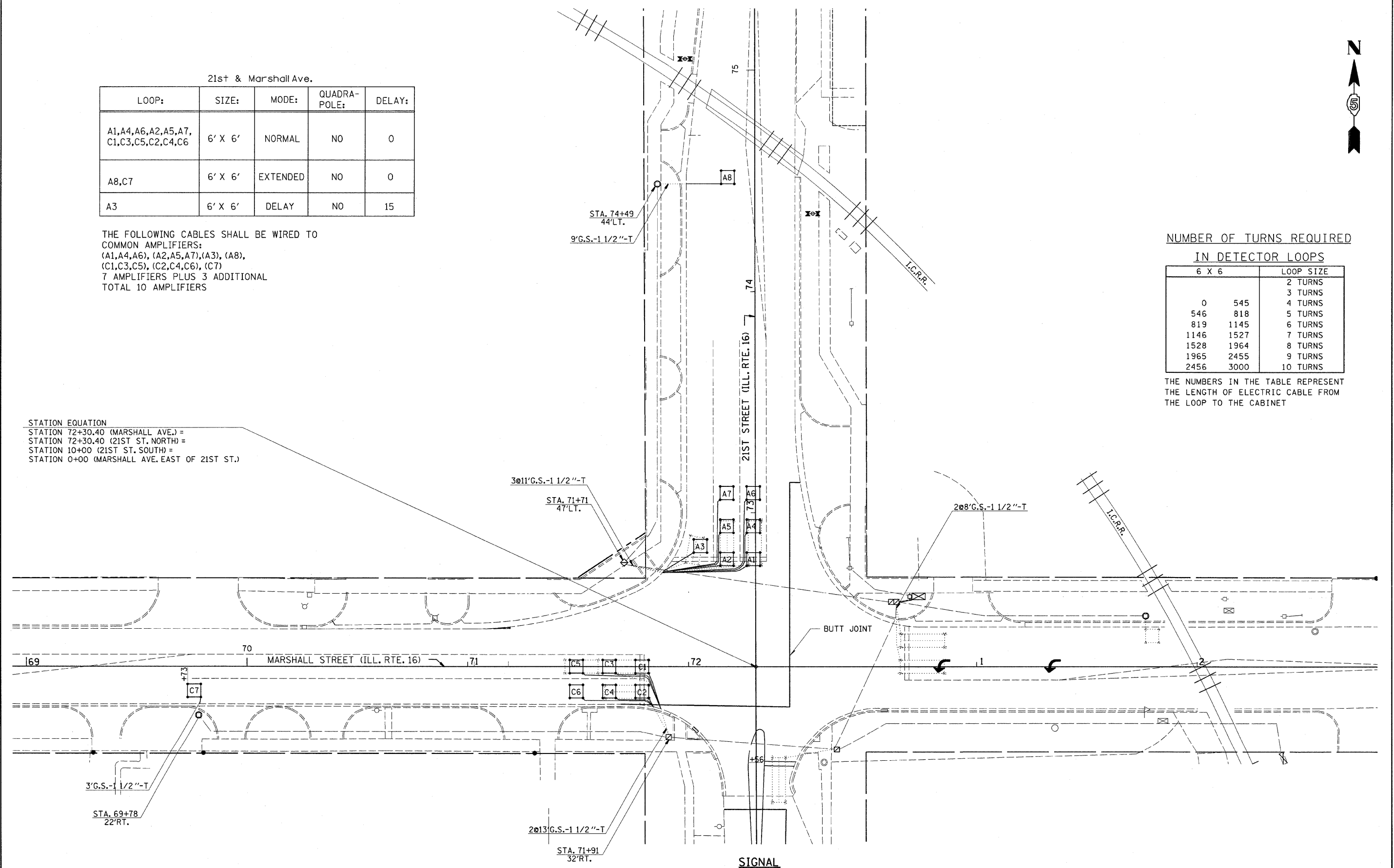
THE FOLLOWING CABLES SHALL BE WIRED TO COMMON AMPLIFIERS:
 (A1,A4,A6), (A2,A5,A7),(A3), (A8),
 (C1,C3,C5), (C2,C4,C6), (C7)
 7 AMPLIFIERS PLUS 3 ADDITIONAL
 TOTAL 10 AMPLIFIERS

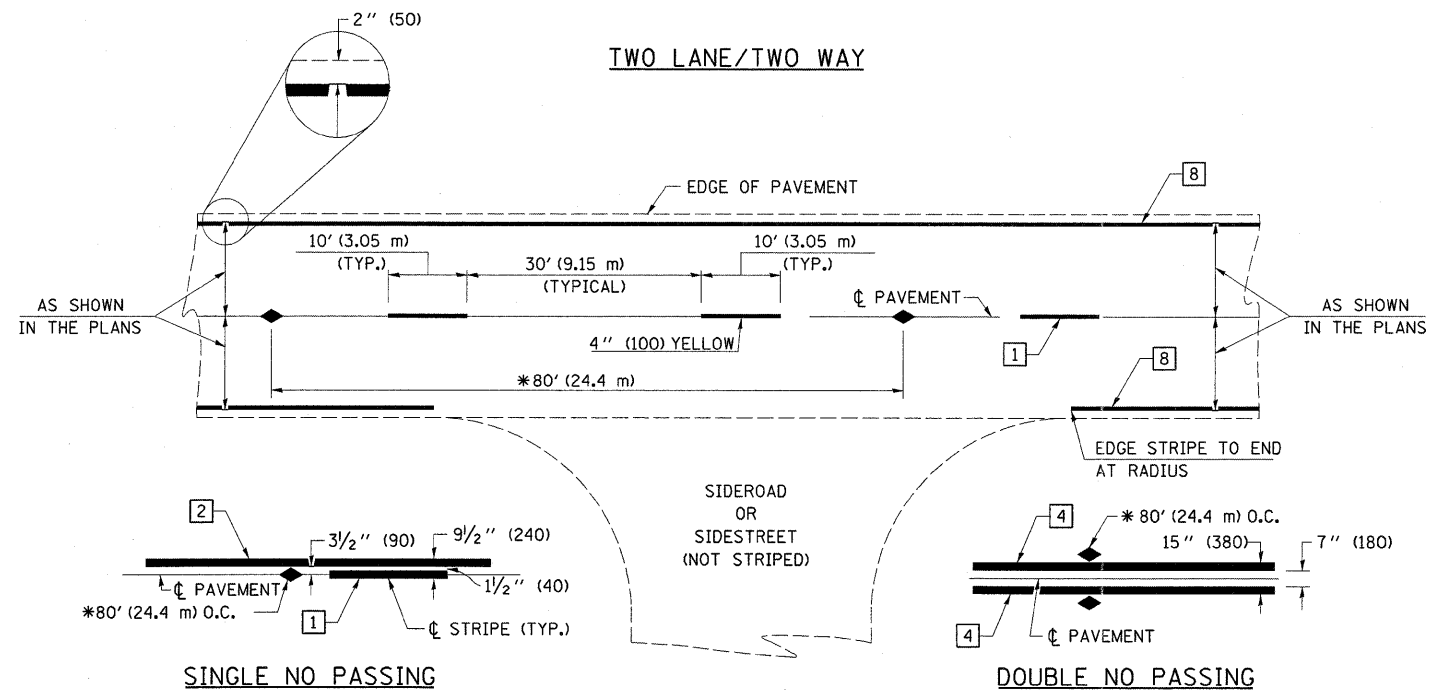
STATION EQUATION
 STATION 72+30.40 (MARSHALL AVE.) =
 STATION 72+30.40 (21ST ST. NORTH) =
 STATION 10+00 (21ST ST. SOUTH) =
 STATION 0+00 (MARSHALL AVE. EAST OF 21ST ST.)

NUMBER OF TURNS REQUIRED

6 X 6		LOOP SIZE
		2 TURNS
		3 TURNS
0	545	4 TURNS
546	818	5 TURNS
819	1145	6 TURNS
1146	1527	7 TURNS
1528	1964	8 TURNS
1965	2455	9 TURNS
2456	3000	10 TURNS

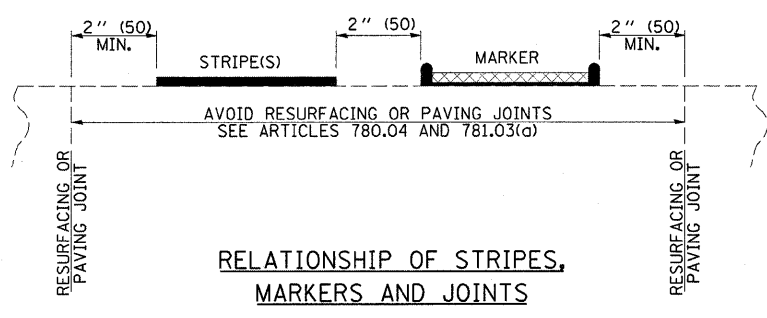
THE NUMBERS IN THE TABLE REPRESENT THE LENGTH OF ELECTRIC CABLE FROM THE LOOP TO THE CABINET





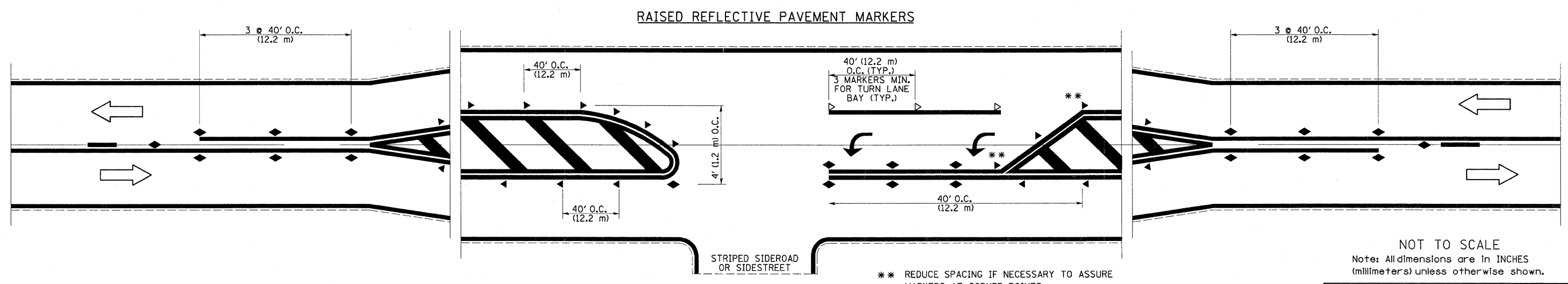
PAVEMENT MARKING LEGEND

- 1 4" (100) SKIP-DASH (YELLOW)
 - 2 4" (100) SOLID (YELLOW)
 - 3 12" (300) DIAGONAL (YELLOW)
 - 4 4" (100) DOUBLE YELLOW (NARROW)
 - 5 12" (300) SOLID WHITE
 - 6 RESERVED
 - 7 6" (150) SKIP-DASH (WHITE)
 - 8 4" (100) SOLID (WHITE)
 - 9 12" (300) DIAGONAL (WHITE)
 - 10 6" (150) SOLID (WHITE)
 - 11 24" (600) STOP BAR (WHITE)
 - 12 8" (200) SOLID (WHITE)
 - 13 4" (100) PARKING WHITE
-



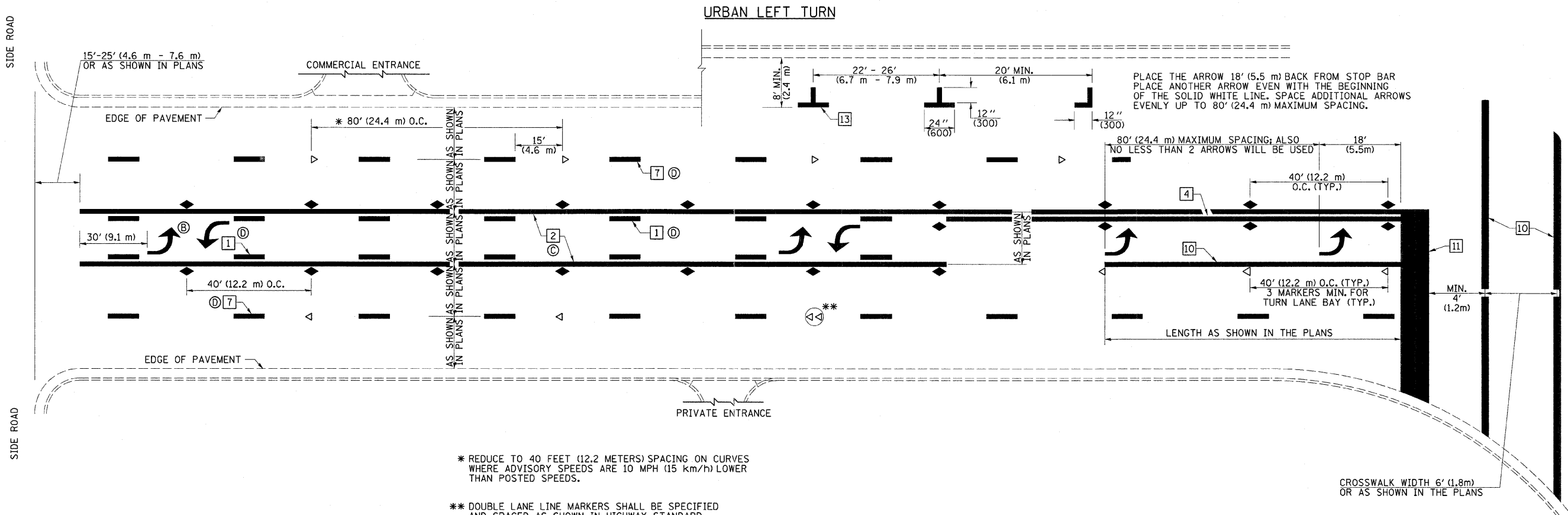
TYPICAL PAVEMENT MARKERS LEGEND

- ◆ TWO-WAY AMBER MARKER
- ▶ ONE-WAY AMBER MARKER
- ▷ ONE-WAY CRYSTAL MARKER



NOT TO SCALE
 Note: All dimensions are in INCHES (millimeters) unless otherwise shown.

FILE NAME =	USER NAME = swartzw	DESIGNED -	REVISED -	STATE OF ILLINOIS DEPARTMENT OF TRANSPORTATION	PAVEMENT MARKING AND RAISED REFLECTIVE PAVEMENT MARKERS (RURAL & URBAN APPLICATIONS)	F.A.P. RTE. 325	SECTION .	COUNTY .	TOTAL SHEETS 24	SHEET NO. 20		
cr:\pw\work\p\dot\swartzw\d0240046\077259-shr-details.dgn	PLOT SCALE = 50.0000' / in.	DRAWN -	REVISED -			SCALE: NA	SHEET 1 OF 4 SHEETS	TO STA.	ILLINOIS FED. AID PROJECT			
	PLOT DATE = 10/21/2011	CHECKED -	REVISED -			CONTRACT NO. 74259						
		DATE -	REVISED -			* (8,9,10)RS-3, (19)RS-2 * Coles, Moultrie						



* REDUCE TO 40 FEET (12.2 METERS) SPACING ON CURVES WHERE ADVISORY SPEEDS ARE 10 MPH (15 km/h) LOWER THAN POSTED SPEEDS.

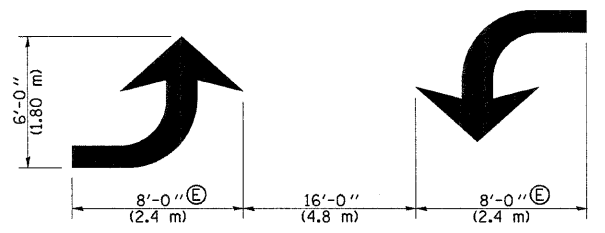
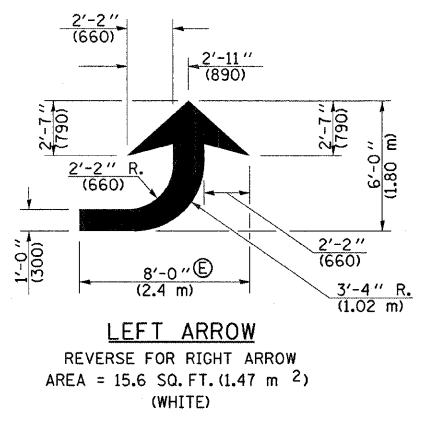
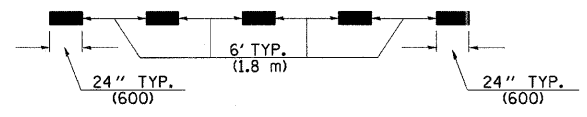
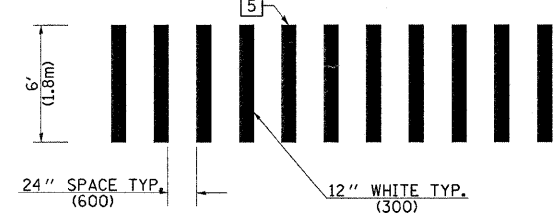
** DOUBLE LANE LINE MARKERS SHALL BE SPECIFIED AND SPACED AS SHOWN IN HIGHWAY STANDARD 781001 FOR MULTI-LANE DIVIDED AND UNDIVIDED HIGHWAYS.

PAVEMENT MARKING LEGEND

- 1 4" (100) SKIP-DASH (YELLOW)
- 2 4" (100) SOLID (YELLOW)
- 3 12" (300) DIAGONAL (YELLOW)
- 4 4" (100) DOUBLE YELLOW (NARROW)
- 5 12" (300) SOLID WHITE
- 6 RESERVED
- 7 6" (150) SKIP-DASH (WHITE)
- 8 4" (100) SOLID (WHITE)
- 9 12" (300) DIAGONAL (WHITE)
- 10 6" (150) SOLID (WHITE)
- 11 24" (600) STOP BAR (WHITE)
- 12 8" (200) SOLID (WHITE)
- 13 4" (100) PARKING WHITE

GENERAL NOTES

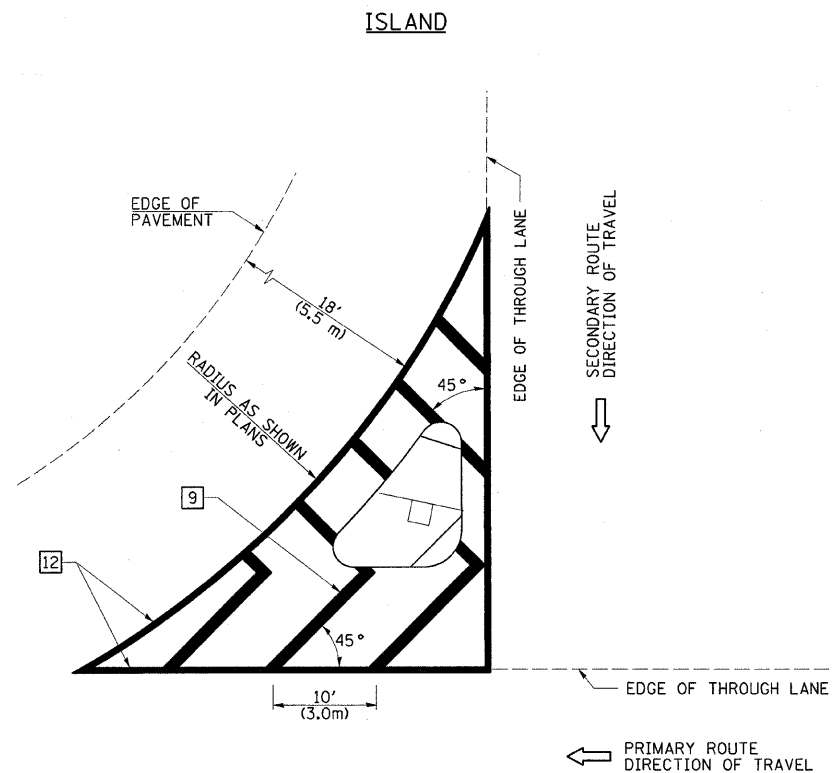
1. TURN ARROW PAIRS SHALL BE PLACED AT 250' (75 m) INTERVALS AND SHALL BE EVENLY SPACED BETWEEN BOTH ENDS OF THE BIDIRECTIONAL LEFT TURN LANE. USE A MINIMUM OF TWO PAIRS PER BLOCK.
2. THE SOLID YELLOW PAVEMENT MARKINGS [2] SHOULD GENERALLY START OR END NEAR THE RADIUS POINT OF EACH STREET RETURN EXCEPT WHERE ONE OR BOTH ENDS WOULD INCLUDE STOP BARS.
3. THE SKIP-DASH PAVEMENT MARKINGS [1] OR [7] SHOULD BE CENTERED BETWEEN BOTH ENDS OF EACH CITY BLOCK AND SHALL BE PLACED SO THEY LINE UP ACROSS FROM EACH OTHER.
4. USE LARGE ARROW SIZE FOR BOTH RURAL AND URBAN LOCATIONS. (SEE LAST PAGE OF SECTION 780x FOR SYMBOLS TABLE)
5. LANE LINE EXTENSIONS SHALL BE THE SAME COLOR AND WIDTH AS THE LANE LINE BEING EXTENDED.



TYPICAL DOUBLE TURN ARROWS (WHITE)

NOT TO SCALE
Note: All dimensions are in INCHES (millimeters) unless otherwise shown.

FILE NAME =	USER NAME = swartzm	DESIGNED -	REVISED -	STATE OF ILLINOIS DEPARTMENT OF TRANSPORTATION	PAVEMENT MARKING AND RAISED REFLECTIVE PAVEMENT MARKERS (RURAL & URBAN APPLICATIONS)	F.A.P. RTE.	SECTION	COUNTY	TOTAL SHEETS	SHEET NO.	
es:\pw\work\pawidot\swartzm\0240046\077259-sht-details.dgn	PLOT SCALE = 50.0000 / 1 in.	DRAWN -	REVISED -			325	.	.	24	21	
	PLOT DATE = 10/21/2011	CHECKED -	REVISED -			CONTRACT NO. 74259					
		DATE -	REVISED -			ILLINOIS FED. AID PROJECT					
						(8,910)RS-3, (192)RS-2					



GENERAL NOTES

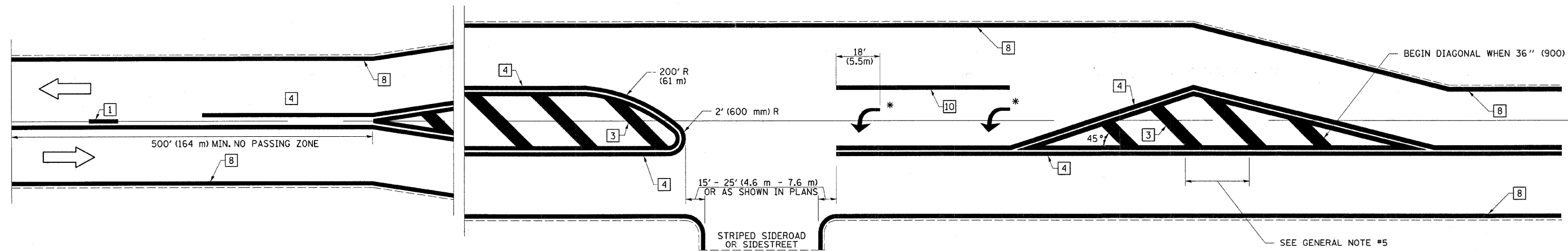
1. RAISED AND CORRUGATED MEDIANS SHALL BE OUTLINED WITH [2] IF PRESENT.
2. SOME OF THE INFORMATION INCLUDED WITH THIS DETAIL MAY NOT BE APPLICABLE TO THIS IMPROVEMENT.
3. PAVEMENT MARKINGS ARE TO BE EXTENDED THROUGH OMISSIONS WHEN APPLICABLE.
4. FINAL PAVEMENT MARKINGS SHALL BE IN PLACE PRIOR TO PLACING ANY RAISED REFLECTIVE PAVEMENT MARKERS.
5. THE FOLLOWING CRITERIA SHALL BE USED FOR SELECTING THE DIAGONAL PAVEMENT MARKING SPACING:

< 30 MPH (< 50 km/h)	15' (4.5 m)
30-45 MPH (50-75 km/h)	20' (6.0 m)
> 45 MPH (> 75 km/h)	30' (9.0 m)

PAVEMENT MARKING LEGEND

- | | |
|-------------------------------------|--|
| [1] 4" (100) SKIP-DASH (YELLOW) | |
| [2] 4" (100) SOLID (YELLOW) | |
| [3] 12" (300) DIAGONAL (YELLOW) | |
| [4] 4" (100) DOUBLE YELLOW (NARROW) | |
| [5] 12" (300) SOLID WHITE | |
| [6] RESERVED | |
| [7] 6" (150) SKIP-DASH (WHITE) | |
| [8] 4" (100) SOLID (WHITE) | |
| [9] 12" (300) DIAGONAL (WHITE) | |
| [10] 6" (150) SOLID (WHITE) | |
| [11] 24" (600) STOP BAR (WHITE) | |
| [12] 8" (200) SOLID (WHITE) | |
| [13] 4" (100) PARKING WHITE | |

RURAL LEFT TURN STRIPING



* PLACE AN ARROW 18' (5.5 m) BACK FROM STOP BAR. PLACE ANOTHER ARROW EVEN WITH THE BEGINNING OF THE SOLID WHITE LINE. SPACE ADDITIONAL ARROWS EVENLY UP TO 80' (24.4 m) MAXIMUM SPACING. USE MINIMUM OF 2 ARROWS.

NOT TO SCALE

Note: All dimensions are in INCHES (millimeters) unless otherwise shown.

DISTRICT 7 DETAIL NO. 7800001

FILE NAME =	USER NAME = swartzw	DESIGNED -	REVISED -
cs:\pw_work\pwwdot\swartzw\10248046\077	259-shd-details.dgn	DRAWN -	REVISED -
	PLOT SCALE = 50.0000 1/4 in.	CHECKED -	REVISED -
	PLOT DATE = 10/21/2011	DATE -	REVISED -

**STATE OF ILLINOIS
DEPARTMENT OF TRANSPORTATION**

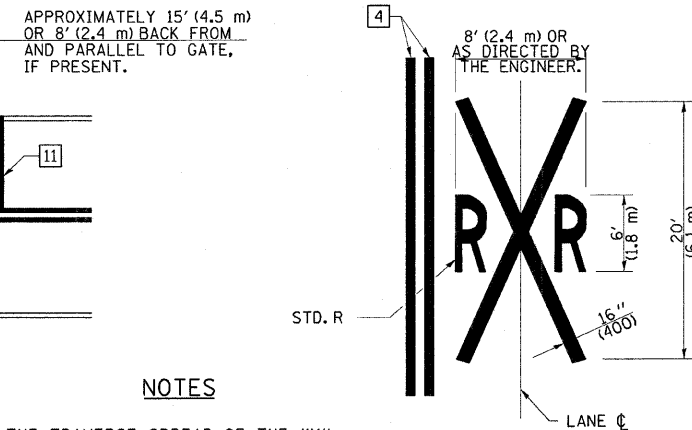
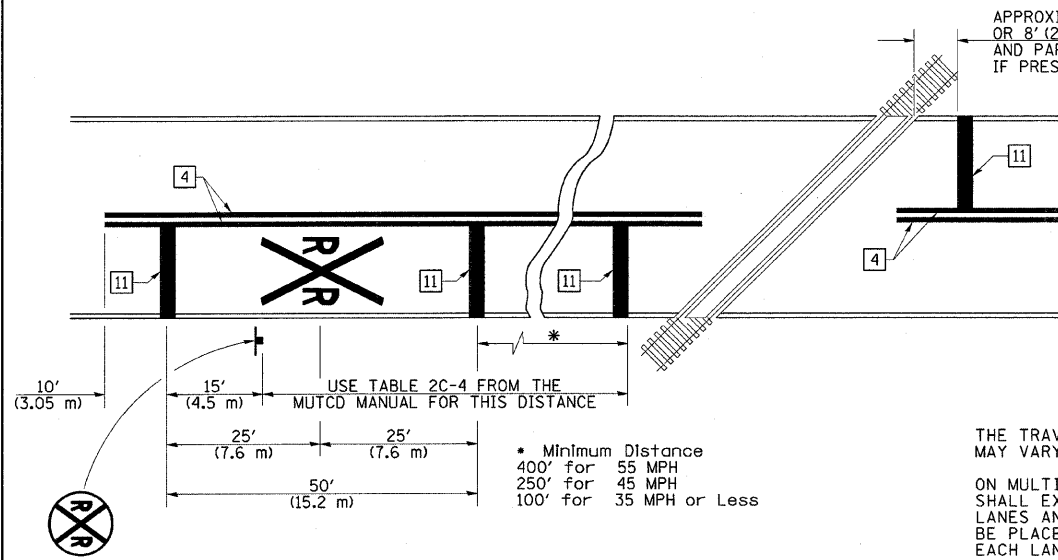
**PAVEMENT MARKING AND RAISED REFLECTIVE PAVEMENT MARKERS
(RURAL & URBAN APPLICATIONS)**

F.A.P. RTE.	SECTION	COUNTY	TOTAL SHEETS	SHEET NO.
325			24	22
CONTRACT NO. 74259			ILLINOIS FED. AID PROJECT	

SCALE: NA SHEET 3 OF 4 SHEETS STA. TO STA.

PAVEMENT MARKINGS AT RAILROAD-HIGHWAY GRADE CROSSING

PAVEMENT MARKING LEGEND



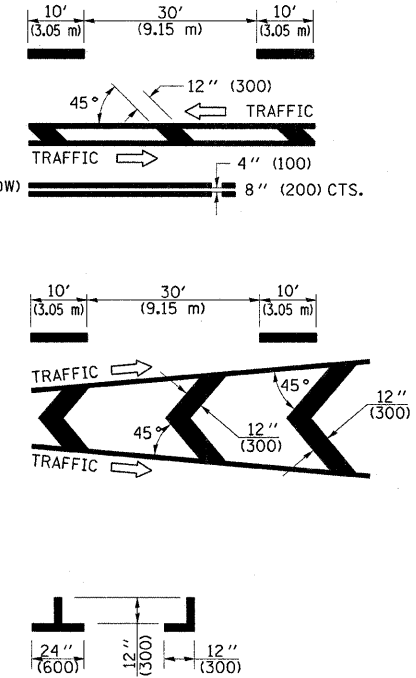
NOTES

THE TRAVERSE SPREAD OF THE "X" MAY VARY ACCORDING TO LANE WIDTH.

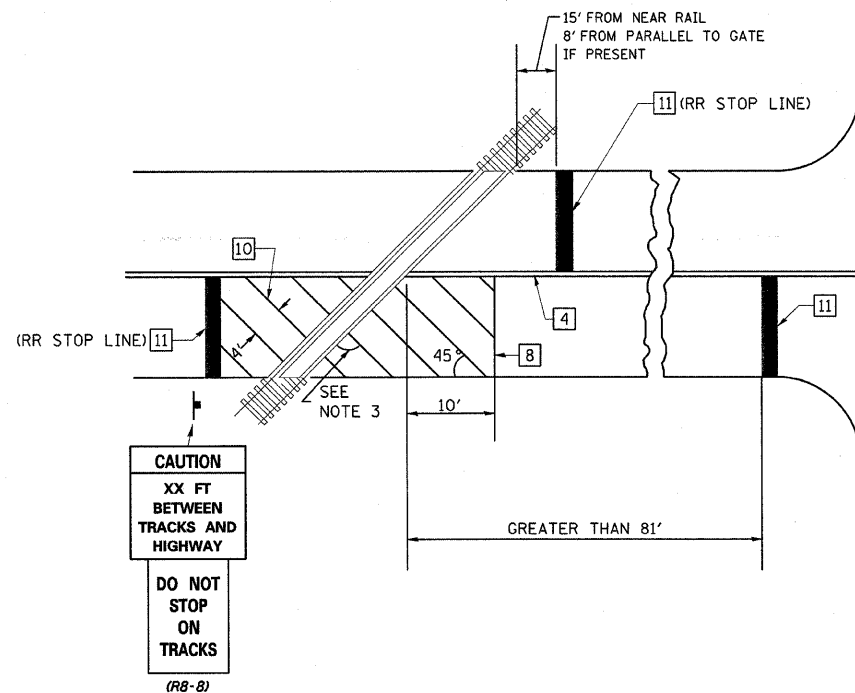
ON MULTI-LANE ROADS, THE STOP LINES SHALL EXTEND ACROSS ALL APPROACH LANES AND SEPARATE RXR SYMBOLS SHALL BE PLACED ADJACENT TO EACH OTHER IN EACH LANE.

WHEN THE PAVEMENT MARKING SYMBOL IS USED, A PORTION OF THE SYMBOL SHOULD BE LOCATED DIRECTLY ADJACENT TO THE ADVANCE WARNING SIGN (W10-1) AS PLACED BY TABLE II-1, CONDITION B OF THE MUTCD.

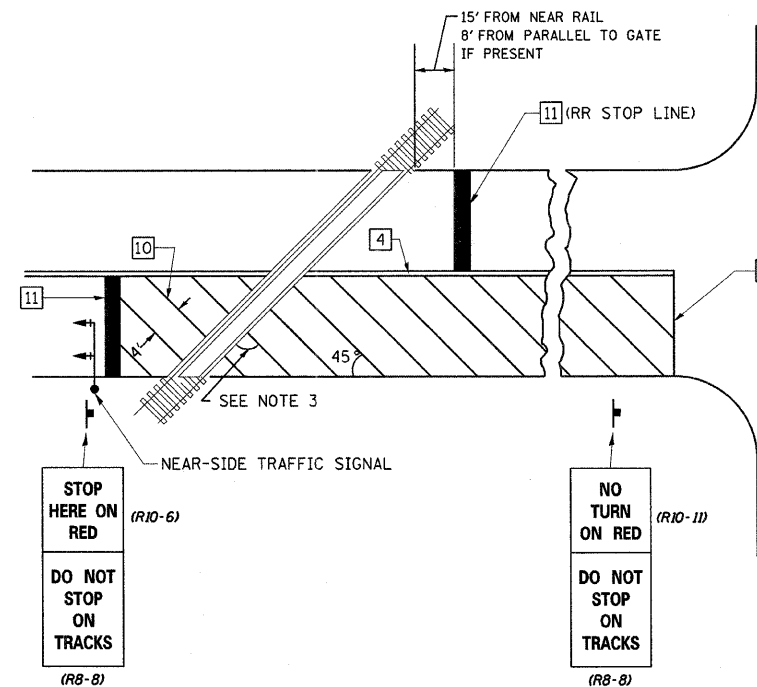
- 1 4" (100) SKIP-DASH (YELLOW)
- 2 4" (100) SOLID (YELLOW)
- 3 12" (300) DIAGONAL (YELLOW)
- 4 4" (100) DOUBLE YELLOW (NARROW)
- 5 12" (300) SOLID WHITE
- 6 RESERVED
- 7 6" (150) SKIP-DASH (WHITE)
- 8 4" (100) SOLID (WHITE)
- 9 12" (300) DIAGONAL (WHITE)
- 10 6" (150) SOLID (WHITE)
- 11 24" (600) STOP BAR (WHITE)
- 12 8" (200) SOLID (WHITE)
- 13 4" (100) PARKING WHITE



RAILROAD CROSSING WITH INTERCONNECT ONLY



RAILROAD CROSSING WITH INTERCONNECT AND PRE-SIGNALS



GENERAL NOTES

1. SUPPLEMENTAL PAVEMENT MARKINGS TO BE INSTALLED ONLY ON APPROACHES TO INTERSECTIONS CONTROLLED BY TRAFFIC SIGNALS WHICH ARE INTERCONNECTED WITH THE RAILROAD WARNING SIGNALS.
2. EXTEND PAVEMENT MARKINGS TO THE INTERSECTION ONLY WHERE NEAR-SIDE TRAFFIC SIGNALS ARE USED.
3. WHERE THE ANGLE BETWEEN THE DIAGONAL PAVEMENT MARKINGS AND THE TRACK WOULD BE LESS THAN 20°, THE PAVEMENT MARKINGS SHOULD BE PLACED IN THE OPPOSITE DIRECTION FROM THAT SHOWN.

SUPPLEMENTAL PAVEMENT MARKING TREATMENT FOR RAILROAD-HIGHWAY GRADE CROSSING

NOT TO SCALE

Note: All dimensions are in INCHES (millimeters) unless otherwise shown.

DISTRICT 7 DETAIL NO. 7800001

FILE NAME =	USER NAME = swartzrw	DESIGNED -	REVISED -
cc:\pe_work\pws\dos\swartzrw\d0240046\077	259-shd-details.dgn	DRAWN -	REVISED -
	PLOT SCALE = 50,0000 "/> <td>CHECKED -</td> <td>REVISED -</td>	CHECKED -	REVISED -
	PLOT DATE = 10/21/2011	DATE -	REVISED -

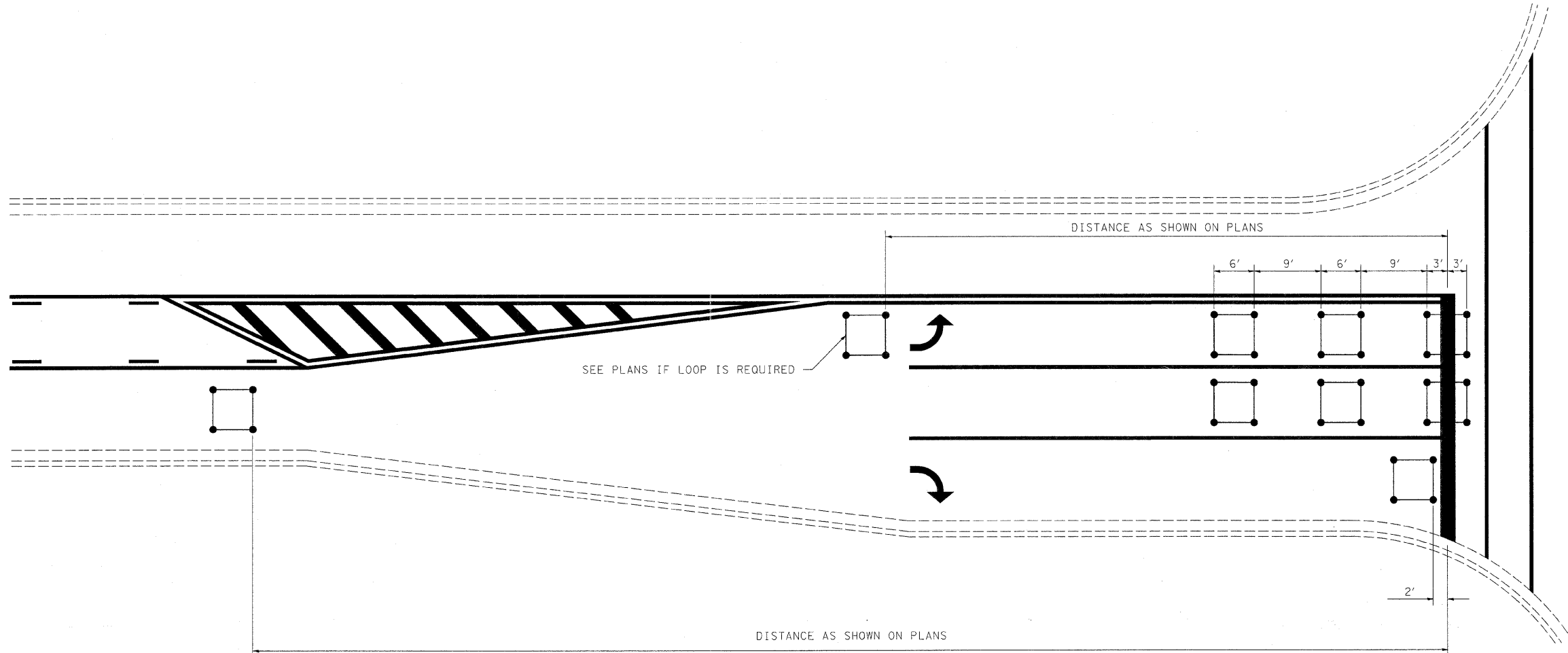
STATE OF ILLINOIS
DEPARTMENT OF TRANSPORTATION

PAVEMENT MARKING AND RAISED REFLECTIVE PAVEMENT MARKERS
(RURAL & URBAN APPLICATIONS)

F.A.P. RTE.	SECTION	COUNTY	TOTAL SHEETS	SHEET NO.
325	.	.	24	23
CONTRACT NO. 74259			ILLINOIS FED. AID PROJECT	

SCALE: NA SHEET 4 OF 4 SHEETS STA. TO STA.

TYPICAL APPLICATION OF DETECTOR LOOPS



NOTE:

1. EACH LOOP SHALL HAVE ITS OWN HOMERUN TO THE GULFBOX/HANDHOLE.
2. LOOPS SHOULD BE CENTERED IN EACH LANE.
3. USE 6' BY 6' LOOPS FOR LANE WIDTHS OF 11' OR GREATER.
4. USE 5' BY 5' LOOPS IF LANE WIDTH IS LESS THAN 11'.

NOT TO SCALE

DISTRICT 7 DETAIL NO. 88600100

FILE NAME =	USER NAME = swartzrw	DESIGNED -	REVISED - MKS 4-08	STATE OF ILLINOIS DEPARTMENT OF TRANSPORTATION	TYPICAL APPLICATIONS OF DETECTOR LOOPS		F.A.P. RTE.	SECTION	COUNTY	TOTAL SHEETS	SHEET NO.	
ca:\pwork\pw\dot\swartzrw\d0240046\077	259-shd-det-loops.dgn	DRAWN -	REVISED -		SCALE: NA	SHEET NO. 1 OF 1 SHEETS	STA.	TO STA.	320	(8,9,10)RS-2, (19Z)RS--2	COLES	24 24
	PLOT SCALE = 28.0000' / in.	CHECKED -	REVISED -						CONTRACT NO. 74259			
	PLOT DATE = 10/21/2011	DATE -	REVISED -						ILLINOIS FED. AID PROJECT			