

F.A.P. RTE.	SECTION	COUNTY	TOTAL SHEETS	SHEET NO.
752	(23-2)RS-1, (W,V)RS-2	Fayette	13	1
ILLINOIS			CONTRACT NO. 74415	

STATE OF ILLINOIS  
DEPARTMENT OF TRANSPORTATION  
DIVISION OF HIGHWAYS

# PROPOSED HIGHWAY PLANS

FAP ROUTE 752 (US 40)  
SECTION (23-2)RS-1, (W,V)RS-2  
PROJECT F-0752 (005)  
BITUMINOUS RESURFACING  
FAYETTE COUNTY

C-97-129-09

FOR INDEX OF SHEETS, SEE SHEET NO. 2

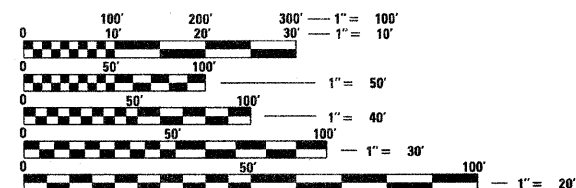
STATION EQUATIONS

STA 65+48.71 BK = STA 33+55.00 AH  
STA 174+15.40 BK = STA 0+00.00 AH  
STA 33+77.00 BK = STA 102+92.10 AH  
STA 119+32.10 BK = STA 119+34.57 AH  
STA 120+94.05 BK = STA 119+99.41 AH

PAVING OMISSIONS

STA 46+00 TO STA 56+69  
STA 68+67 TO STA 70+02  
STA 83+86 TO STA 85+45  
STA 148+08 TO STA 151+77

ADT (2007) = 3,350

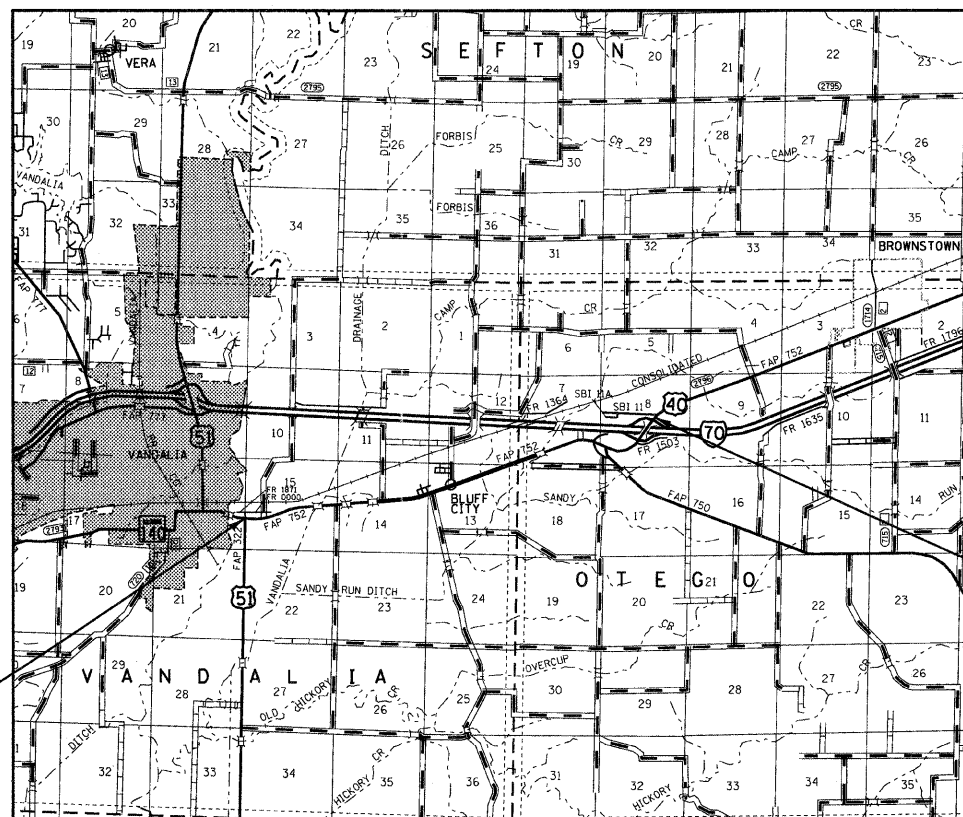


FULL SIZE PLANS HAVE BEEN PREPARED USING STANDARD ENGINEERING SCALES. REDUCED SIZED PLANS WILL NOT CONFORM TO STANDARD SCALES. IN MAKING MEASUREMENTS ON REDUCED PLANS, THE ABOVE SCALES MAY BE USED.

J.U.L.I.E.  
JOINT UTILITY LOCATION INFORMATION FOR EXCAVATION  
1-800-892-0123  
OR 811

PROJECT ENGINEER: MARK DAUGHERTY  
PROJECT MANAGER: BRIAN BIERMAN  
PHONE: (217)-342-8313  
CONTRACT NO. 74415

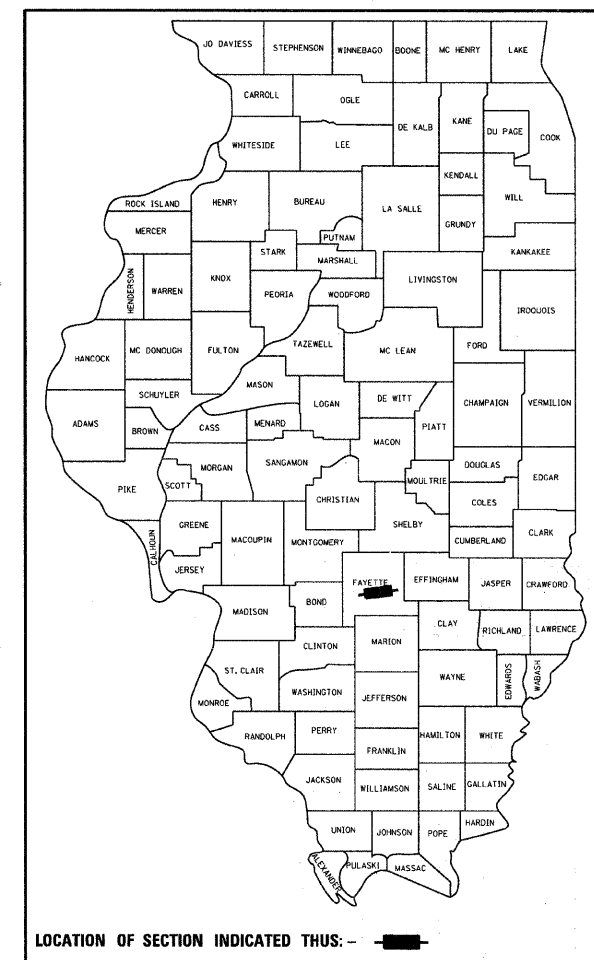
PROJECT BEGINS  
STA 49+82



PROJECT ENDS  
STA 162+95

GROSS LENGTH = 25,099 FT. = 4.75 MILE  
NET LENGTH = 23,367 FT. = 4.43 MILE

D-97-073-09



LOCATION OF SECTION INDICATED THUS: - [black rectangle] -

STATE OF ILLINOIS  
DEPARTMENT OF TRANSPORTATION  
DIVISION OF HIGHWAYS

SUBMITTED Oct 26 20 11  
Roger J. Dinkell  
DEPUTY DIRECTOR OF HIGHWAYS, REGION ENGINEER

December 9 20 11  
Scott E. Stitt, P.E.  
acting ENGINEER OF DESIGN AND ENVIRONMENT

December 9 20 11  
William R. Frazer  
interim DIRECTOR OF HIGHWAYS, CHIEF ENGINEER

PRINTED BY THE AUTHORITY  
OF THE STATE OF ILLINOIS