

STATE OF ILLINOIS
 DEPARTMENT OF TRANSPORTATION
 DIVISION OF HIGHWAYS

**PROPOSED
 HIGHWAY PLANS**

FAI ROUTE 57 (I-57)
 SECTION (87-1, 18-1, 18-1-1)RS-1
 PROJECT IM-057-4(130)168
 INTERSTATE RESURFACING (3R)
 SHELBY AND CUMBERLAND COUNTIES

C-97-109-10

F.A.I. RTE.	SECTION	COUNTY	TOTAL SHEETS	SHEET NO.
57	87-1RS-1	ILLINOIS	32	1
CONTRACT NO. 74467				

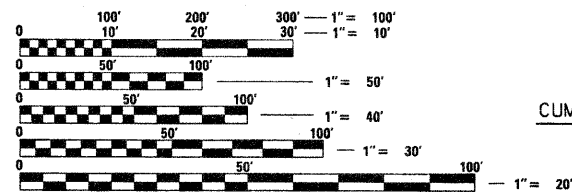
• Shelby, Cumberland

D-97-050-10



FOR INDEX OF SHEETS, SEE SHEET NO. 2

2010 ADT = 17,400



FULL SIZE PLANS HAVE BEEN PREPARED USING STANDARD ENGINEERING SCALES. REDUCED SIZED PLANS WILL NOT CONFORM TO STANDARD SCALES. IN MAKING MEASUREMENTS ON REDUCED PLANS, THE ABOVE SCALES MAY BE USED.

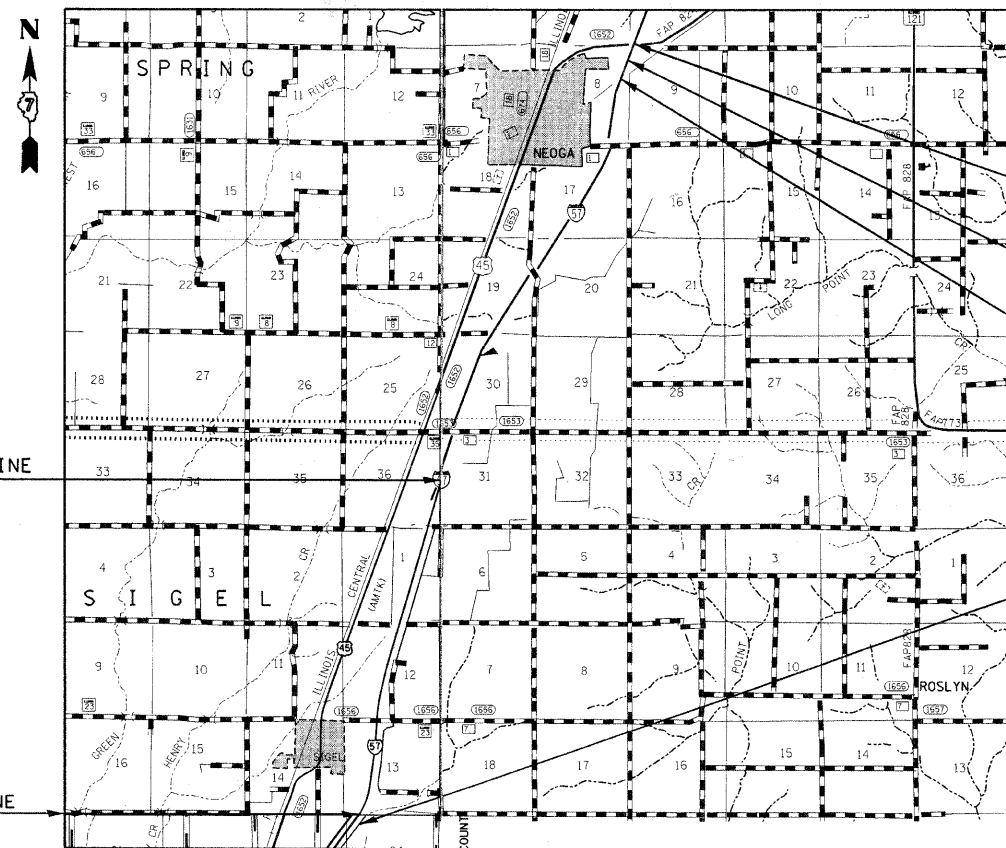
J.U.L.I.E.
 JOINT UTILITY LOCATION INFORMATION FOR EXCAVATION
 1-800-892-0123
 OR 811

PROJECT ENGINEER: MARK DAUGHERTY
 PROJECT MANAGER: JOYCE HEMMEN

CONTRACT NO. 74467

CUMBERLAND/SHELBY CO LINE
 STA 5807+13.89

EFFINGHAM/SHELBY CO LINE
 STA 5617+81.96



GROSS LENGTH = 46,097.97 FT. = 8.731 MILE
 NET LENGTH = 45,803.47 FT. = 8.675 MILE

PROJECT ENDS
 STA 117+79.21

STA E0 = STA 6056+55.70 (BK)
 STA 103+21.94 (AH)

STRUCTURE OMISSION
 018-0001 & 018-0002
 STA 6051+88.53 TO STA 6054+83.03

PROJECT BEGINS
 STA 5610+15

STATE OF ILLINOIS
 DEPARTMENT OF TRANSPORTATION
 DIVISION OF HIGHWAYS

SUBMITTED October 11, 2011

Reg Z Driskell
 DEPUTY DIRECTOR OF HIGHWAYS, REGION ENGINEER

December 9, 2011
Scott E. Stitt, P.E.
 acting ENGINEER OF DESIGN AND ENVIRONMENT

December 9, 2011
William R. Frey, Jr.
 interim DIRECTOR OF HIGHWAYS, CHIEF ENGINEER

**PRINTED BY THE AUTHORITY
 OF THE STATE OF ILLINOIS**