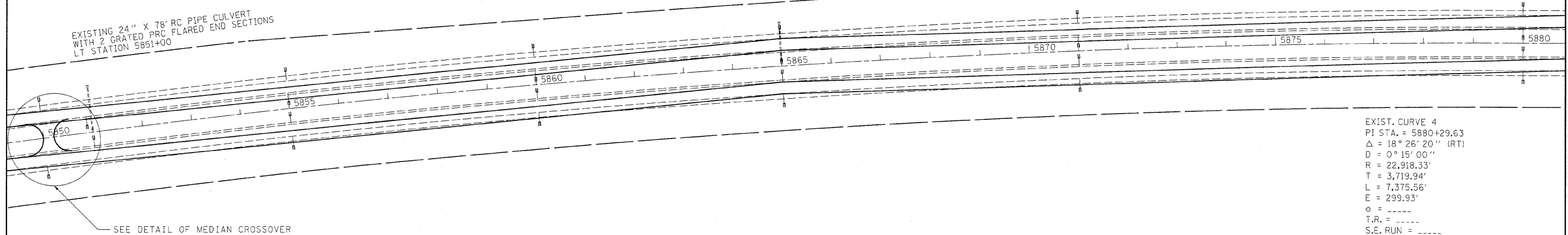




EXISTING 24" X 78' RC PIPE CULVERT
WITH 2 GRATED PRC FLARED END SECTIONS
LT STATION 5851+00

EXISTING 24" X 72' RC PIPE CULVERT
WITH 2 GRATED PRC FLARED END SECTIONS
LT STATION 5865+00



EXIST. CURVE 4
 PI STA. = 5880+29.63
 $\Delta = 18^\circ 26' 20''$ (RT)
 $D = 0^\circ 15' 00''$
 $R = 22,918.33'$
 $T = 3,719.94'$
 $L = 7,375.56'$
 $E = 299.93'$
 $e = \text{-----}$
 $T.R. = \text{-----}$
 $S.E. \text{ RUN} = \text{-----}$
 $P.C. \text{ STA.} = 5843+09.69$
 $P.T. \text{ STA.} = 5916+85.25$

SEE DETAIL OF MEDIAN CROSSOVER

FILE NAME =	USER NAME = teasleyck	DESIGNED -	REVISED -	STATE OF ILLINOIS DEPARTMENT OF TRANSPORTATION	PLAN SHEET		F.A.I. RTE.	SECTION	COUNTY	TOTAL SHEETS	SHEET NO.
ct:\pw_work\pwidot\teasleyck\d8264695\07	4467.sht:plan.dgn	DRAWN -	REVISED -		STA 5850+00 TO STA 5880+00		57	87-1RS-1	*	32	18
	PLOT SCALE = 100,0000' / in.	CHECKED -	REVISED -		SCALE:	SHEET NO. OF	SHEETS	STA.	TO STA.	CONTRACT NO. 74467	
	PLOT DATE = 9/29/2011	DATE -	REVISED -		ILLINOIS FED. AID PROJECT						