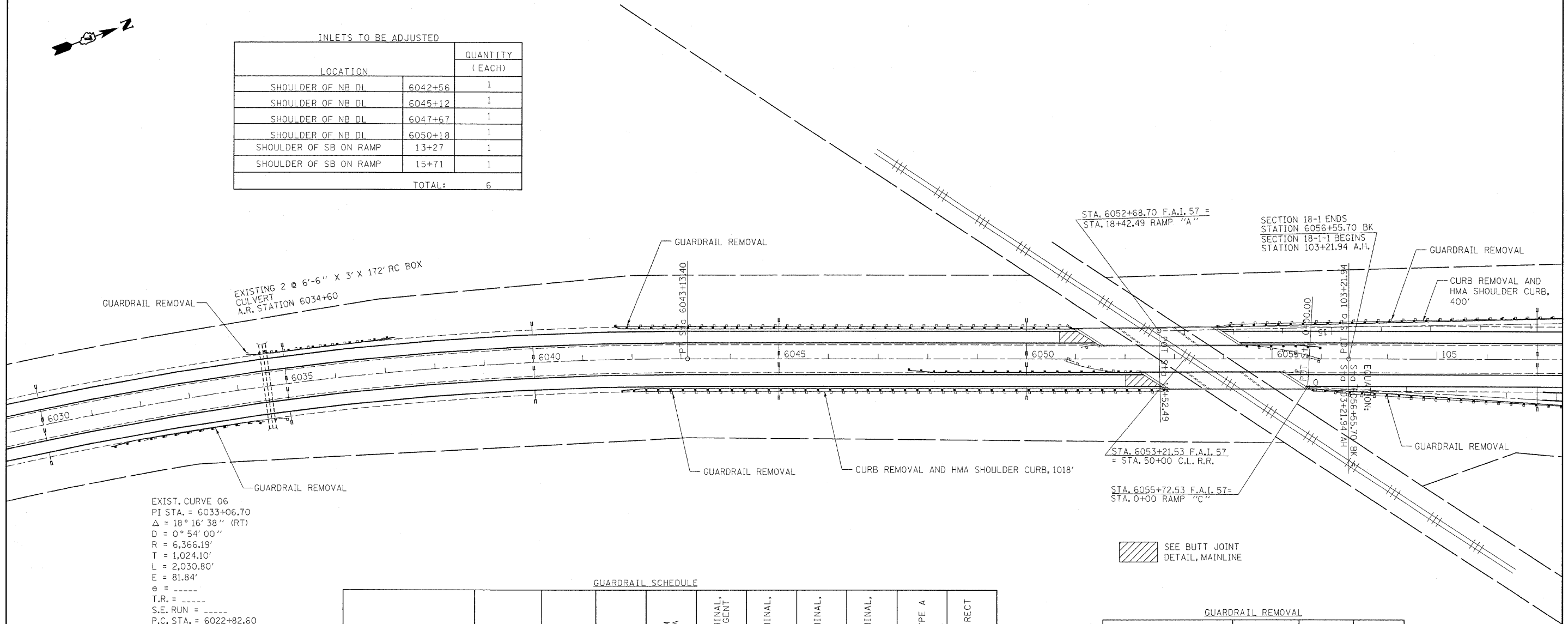




INLETS TO BE ADJUSTED		
LOCATION		QUANTITY (EACH)
SHOULDER OF NB DL	6042+56	1
SHOULDER OF NB DL	6045+12	1
SHOULDER OF NB DL	6047+67	1
SHOULDER OF NB DL	6050+18	1
SHOULDER OF SB ON RAMP	13+27	1
SHOULDER OF SB ON RAMP	15+71	1
TOTAL:		6



EXIST. CURVE 06
 PI STA. = 6033+06.70
 $\Delta = 18^\circ 16' 38''$ (RT)
 $D = 0^\circ 54' 00''$
 $R = 6,366.19'$
 $T = 1,024.10'$
 $L = 2,030.80'$
 $E = 81.84'$
 $e =$
 $T.R. =$
 $S.E. RUN =$
 P.C. STA. = 6022+82.60
 P.T. STA. = 6043+13.40

GUARDRAIL SCHEDULE

STATIONING		DIRECTION	SIDE	LENGTH (FEET)	STEEL PLATE BEAM GUARDRAIL, TYPE A (FEET)	TRAFFIC BARRIER TERMINAL, TYPE 1 (SPECIAL) TANGENT (EACH)	TRAFFIC BARRIER TERMINAL, TYPE 2 (EACH)	TRAFFIC BARRIER TERMINAL, TYPE 5 (EACH)	TRAFFIC BARRIER TERMINAL, TYPE 6 (EACH)	GUARDRAIL MARKER, TYPE A (EACH)	TERMINAL MARKER - DIRECT APPLIED (EACH)
FROM	TO										
6031+26.00	6034+38.50	NB	DL	312.5	250	1	1			5	1
6034+60.50	6037+23.00	SB	DL	262.5	200	1	1			4	1
6041+64.30	6051+04.00	SB	DL	939.70	875	1		1		13	1
6041+76.75	6052+83.00	NB	DL	1106.25	1012.5	1			1	15	1
6047+59.75	6052+41.00	NB	PL	481.25	387.5	1			1	7	1
6054+31.00	6055+99.75	SB	DL	168.75	75	1			1	3	1
0+00	8+27.17	NB	RAMP C	827.17	762.5	1		1		11	1
6+89.75	17+02.25	SB	RAMP A	1012.50	962.5	1			1	14	1
SHEET TOTALS:					1800.0	8	2	2	4	72	8

GUARDRAIL REMOVAL

STATIONING		DIRECTION	SIDE	LENGTH (FEET)
FROM	TO			
6031+69	6034+94	NB	DL	325
6034+26	6037+51	SB	DL	325
6041+67	6050+67	SB	DL	900
6041+88	6052+83	NB	DL	1095
6050+75	6052+41	NB	PL	166
6051+11	6051+49	SB	PL	38
6054+31	6055+98	SB	PL	167
6055+13	6055+61	NB	PL	48
0+00	8+14	NB	RAMP C	814
17+46	7+09	SB	RAMP A	1037
SHEET TOTAL:				4915

SEE BUTT JOINT
 DETAIL, MAINLINE

FILE NAME =
 c:\pwork\pwork\teasley\td264695\07

USER NAME = teasleyk
 4467-shr-plan.dgn
 PLOT SCALE = 1/8" = 100.0000' / 1" / 1" / 1"
 PLOT DATE = 9/29/2011

DESIGNED -
 DRAWN -
 CHECKED -
 DATE -

REVISED -
 REVISED -
 REVISED -
 REVISED -

STATE OF ILLINOIS
 DEPARTMENT OF TRANSPORTATION

PLAN SHEET
 STA 6030+00 TO STA 105+00

SCALE: SHEET NO. OF SHEETS STA. TO STA.

F.A.I. RTE.	SECTION	COUNTY	TOTAL SHEETS	SHEET NO.
57	87-IRS-1		32	24
CONTRACT NO. 74467			ILLINOIS FED. AID PROJECT	

Shelby, Cumberland