

STATE OF ILLINOIS
 DEPARTMENT OF TRANSPORTATION
 DIVISION OF HIGHWAYS

**PROPOSED
 HIGHWAY PLANS**

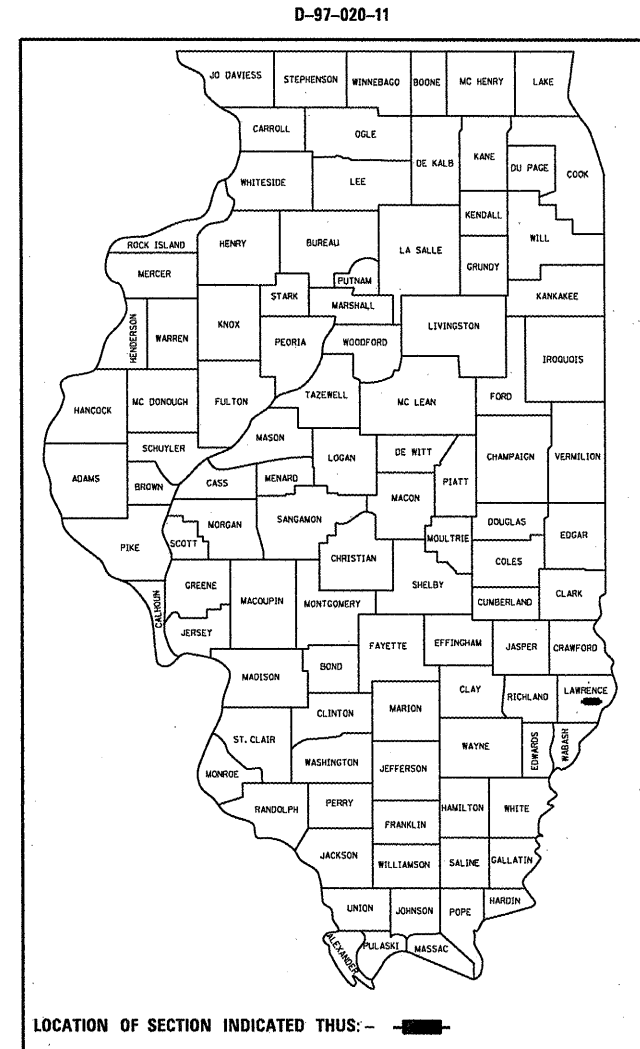
F.A.S. ROUTE 1807 (BUS. U.S. RTE. 50)
 SECTION D7 BRIDGE REPAIRS 2012-3

LAWRENCE COUNTY
 C-97-055-11

F.A.S. RTE.	SECTION	COUNTY	TOTAL SHEETS	SHEET NO.
1807	D7 BRIDGE REPAIRS 2012-3	LAWRENCE	3	1
		ILLINOIS	CONTRACT NO. 74520	

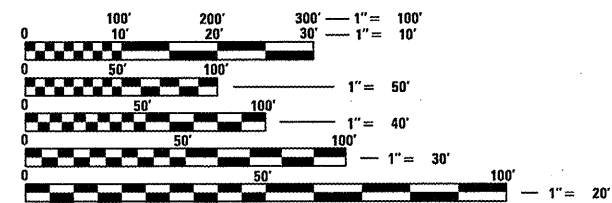
FOR INDEX OF SHEETS, SEE SHEET NO. 2

ADT = 7600 (2006)



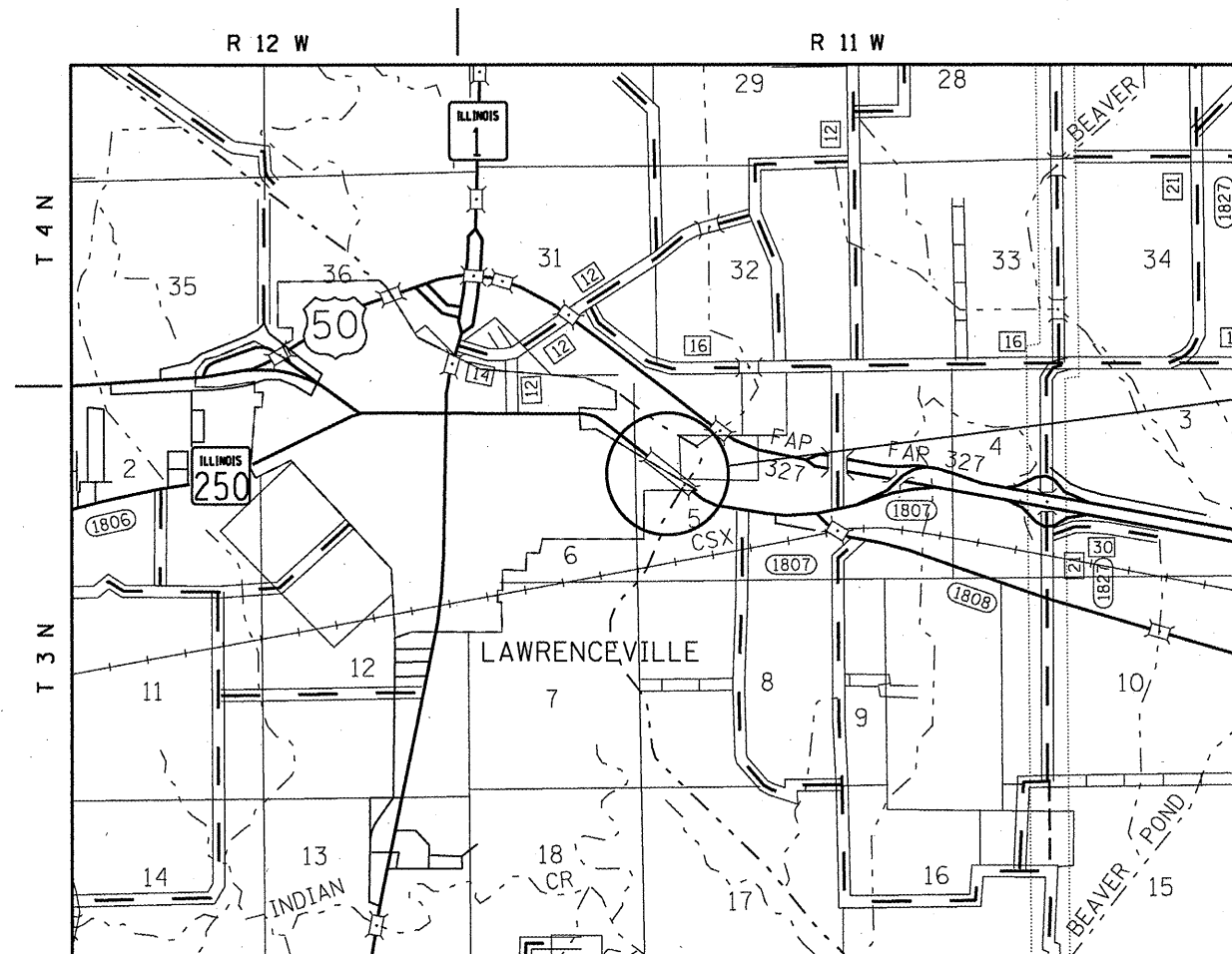
LOCATION OF SECTION INDICATED THUS: —■—

PROJECT LOCATION
 S.N. 051-0053



FULL SIZE PLANS HAVE BEEN PREPARED USING STANDARD ENGINEERING SCALES. REDUCED SIZED PLANS WILL NOT CONFORM TO STANDARD SCALES. IN MAKING MEASUREMENTS ON REDUCED PLANS, THE ABOVE SCALES MAY BE USED.

J.U.L.I.E.
 JOINT UTILITY LOCATION INFORMATION FOR EXCAVATION
 1-800-892-0123
 OR 811



PROJECT ENGINEER: TOM RONAN
 PROJECT MANAGER: TOM RONAN
 PHONE: 217-342-8320
 CONTRACT NO. 74520

GROSS LENGTH = 1236 FT. = 0.23 MILE
 NET LENGTH = 1236 FT. = 0.23 MILE

STATE OF ILLINOIS
 DEPARTMENT OF TRANSPORTATION
 DIVISION OF HIGHWAYS

SUBMITTED *Oct 5 2011*
Scott E. Stitt, P.E.
 DEPUTY DIRECTOR OF HIGHWAYS, REGION ENGINEER

December 9 2011
William R. Freyler
 ENGINEER OF DESIGN AND ENVIRONMENT
 DIRECTOR OF HIGHWAYS CHIEF ENGINEER

PRINTED BY THE AUTHORITY
 OF THE STATE OF ILLINOIS