

STATE OF ILLINOIS
DEPARTMENT OF TRANSPORTATION
DIVISION OF HIGHWAYS

**PROPOSED
HIGHWAY PLANS**

F.A.S. ROUTE 1807 (BUS. U.S. RTE. 50)
SECTION D7 BRIDGE REPAIRS 2012-3

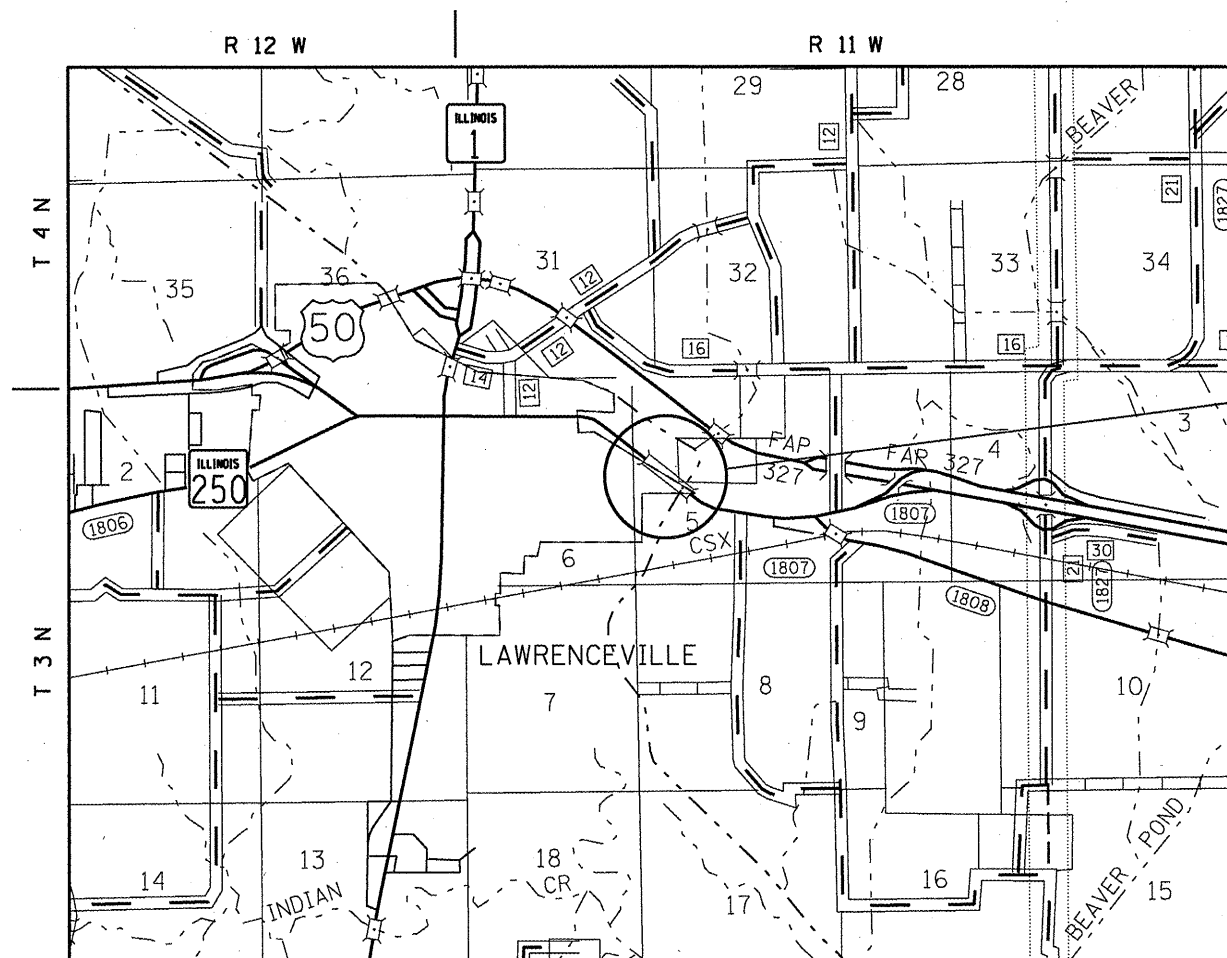
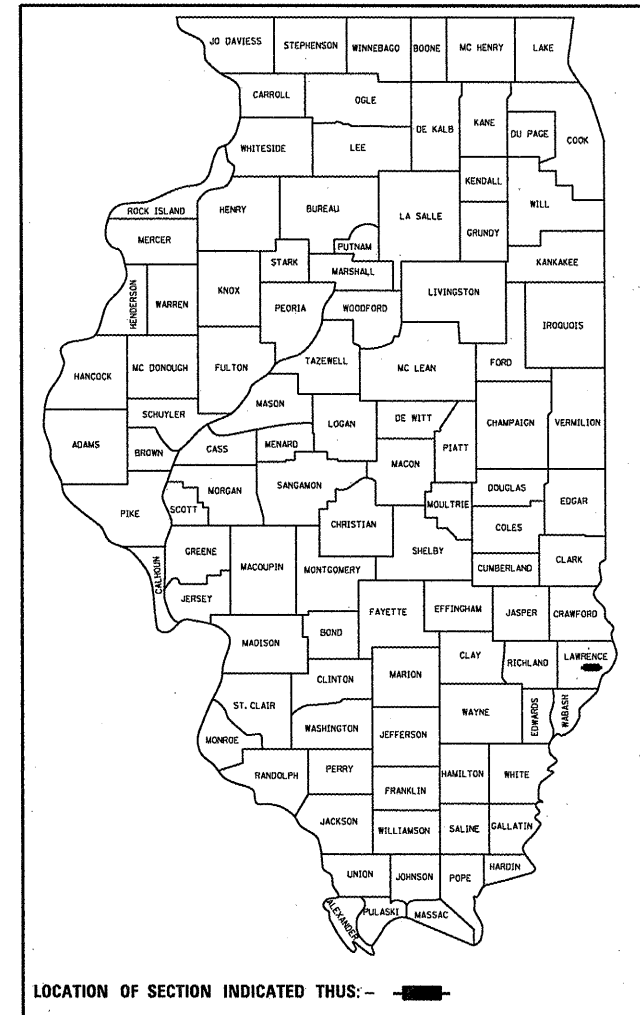
LAWRENCE COUNTY
C-97-055-11

FOR INDEX OF SHEETS, SEE SHEET NO. 2

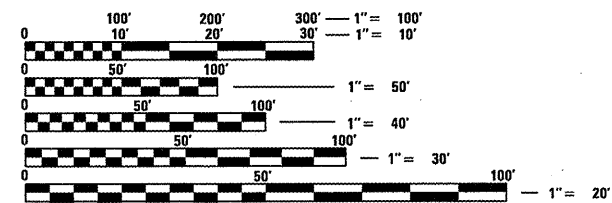
ADT = 7600 (2006)

F.A.S. RTE.	SECTION	COUNTY	TOTAL SHEETS	SHEET NO.
1807	D7 BRIDGE REPAIRS 2012-3	LAWRENCE	3	1
		ILLINOIS	CONTRACT NO. 74520	

D-97-020-11



PROJECT LOCATION
S.N. 051-0053



FULL SIZE PLANS HAVE BEEN PREPARED USING STANDARD ENGINEERING SCALES. REDUCED SIZED PLANS WILL NOT CONFORM TO STANDARD SCALES. IN MAKING MEASUREMENTS ON REDUCED PLANS, THE ABOVE SCALES MAY BE USED.

J.U.L.I.E.
JOINT UTILITY LOCATION INFORMATION FOR EXCAVATION
1-800-892-0123
OR 811

PROJECT ENGINEER: TOM RONAN
PROJECT MANAGER: TOM RONAN
PHONE: 217-342-8320
CONTRACT NO. 74520

GROSS LENGTH = 1236 FT. = 0.23 MILE
NET LENGTH = 1236 FT. = 0.23 MILE

STATE OF ILLINOIS
DEPARTMENT OF TRANSPORTATION
DIVISION OF HIGHWAYS

SUBMITTED *Oct 5 2011*
Roger L. Driskell
DEPUTY DIRECTOR OF HIGHWAYS, REGION ENGINEER

December 9 2011
Scott E. Stitt, P.E.
ENGINEER OF DESIGN AND ENVIRONMENT

December 9 2011
William R. Freyer
DIRECTOR OF HIGHWAYS, CHIEF ENGINEER

PRINTED BY THE AUTHORITY
OF THE STATE OF ILLINOIS

INDEX OF SHEETS

SHEET NO.	DESCRIPTION
1	TITLE SHEET
2	INDEX OF SHEETS, GENERAL NOTES, LOCATION DESCRIPTION, SUMMARY OF QUANTITIES
3	STRUCTURE PLANS

THE FOLLOWING STANDARDS ARE A PART OF THESE PLANS AND ARE INCLUDED AFTER SHEET NO. 3.

STANDARD 701001-02	TYPICAL APPLICATION OF TRAFFIC CONTROL DEVICES
STANDARD 701006-03	TYPICAL APPLICATION OF TRAFFIC CONTROL DEVICES
STANDARD 701201-04	TYPICAL APPLICATION OF TRAFFIC CONTROL DEVICES
STANDARD 701311-03	TYPICAL APPLICATION OF TRAFFIC CONTROL DEVICES
STANDARD 701901-02	TYPICAL APPLICATION OF TRAFFIC CONTROL DEVICES

PROJECT LOCATION

PROJECT LOCATION

ROUTE: FAS 1807
 MARKED: Business US 50
 SECTION: 1B-1
 STATION: 29+99.84
 STRUCTURE NUMBERS: 051-0053

TYPE OF BRIDGE: Welded Plate Girders (6 Girders Total, River Span)
 LOCATION: 0.5 Miles East of Lawrenceville
 FEATURE CARRIED/SPANNED: Business US 50 over the Embarrass River

GENERAL NOTES

THIS SECTION SHALL BE CONSTRUCTED IN ACCORDANCE WITH THE PLANS; THE "STANDARD SPECIFICATIONS FOR ROAD AND BRIDGE CONSTRUCTION" ADOPTED JANUARY 1, 2012; AND THE SPECIAL PROVISIONS INCLUDED IN THE PROPOSAL.

THE WORK ON THIS PROJECT IS LOCATED AT STRUCTURE NUMBER 051-0053 ON BUS US ROUTE 50 IN LAWRENCE COUNTY IN DISTRICT 7. THE WORK ON THIS PROJECT CONSISTS OF THE APPLICATION OF A CAPE SEAL TREATMENT ON THE WEARING SURFACE OF STRUCTURE NUMBER 051-0053, TRAFFIC CONTROL, AND ANY OTHER WORK NECESSARY TO COMPLETE THE PROJECT.

PLAN DIMENSIONS AND DETAILS RELATIVE TO THE EXISTING STRUCTURE HAVE BEEN TAKEN FROM EXISTING PLANS AND ARE SUBJECT TO NOMINAL CONSTRUCTION VARIATIONS. IT SHALL BE THE CONTRACTOR'S RESPONSIBILITY TO VERIFY DIMENSIONS AND DETAILS IN THE FIELD, AND TO MAKE NECESSARY APPROVED ADJUSTMENTS PRIOR TO CONSTRUCTION OR MATERIAL ACQUISITION. SUCH VARIATIONS SHALL NOT BE CAUSE FOR ADDITIONAL COMPENSATION OR CHANGE IN THE SCOPE OF WORK. THE CONTRACTOR WILL BE PAID FOR THE QUANTITY ACTUALLY FURNISHED AT THE UNIT BID PRICE FOR THE WORK.

THE AGGREGATES FOR THE MICRO-SURFACING SHALL MEET THE FRICTION AGGREGATE REQUIREMENTS FOR MIXTURE D IN ARTICLE 1004.03(a).

EXISTING RAISED REFLECTIVE PAVEMENT MARKERS AND THE EXPANSION JOINTS SHALL BE TEMPORARILY COVERED PRIOR TO APPLICATION OF THE CAPE SEAL TREATMENT TO PREVENT THE MATERIAL FROM BEING APPLIED TO THE MARKERS AND THE EXPANSION JOINTS. THE TEMPORARY TAPE SHALL EXTEND 6" BEYOND EACH END OF THE RAISED REFLECTIVE PAVEMENT MARKERS TO ENSURE THE REFLECTORS ARE VISIBLE UPON COMPLETION OF THE WORK. THE TEMPORARY COVERING SHALL BE REMOVED AFTER APPLICATION OF THE CAPE SEAL TREATMENT AND PRIOR TO OPENING TO TRAFFIC. COST IS INCLUDED WITH THE DECK SURFACE TREATMENT SPECIFIED.

PAVEMENT MARKING SHALL BE APPLIED IN ACCORDANCE WITH SECTION 780 OF THE STANDARD SPECIFICATIONS. SHORT TERM PAVEMENT MARKING SHALL BE APPLIED TO THE SEAL COAT AND THE CAPE SEAL AS SPECIFIED IN SECTION 703 OF THE STANDARD SPECIFICATIONS. TEMPORARY TAPE SHALL BE USED ON THE CAPE SEAL AND PAINT SHALL BE USED ON THE SEAL COAT.

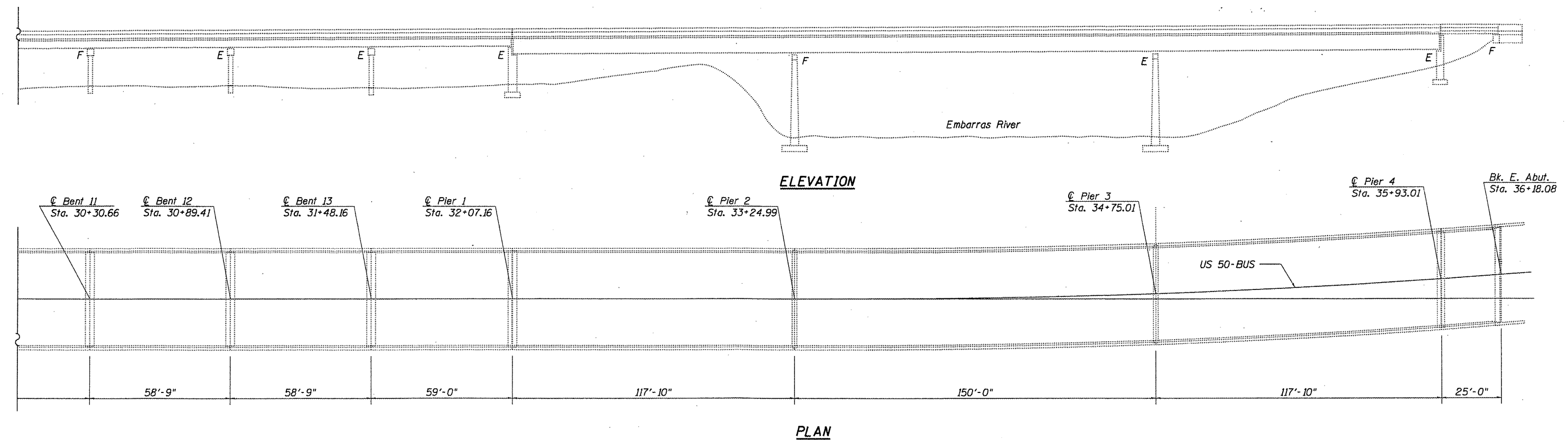
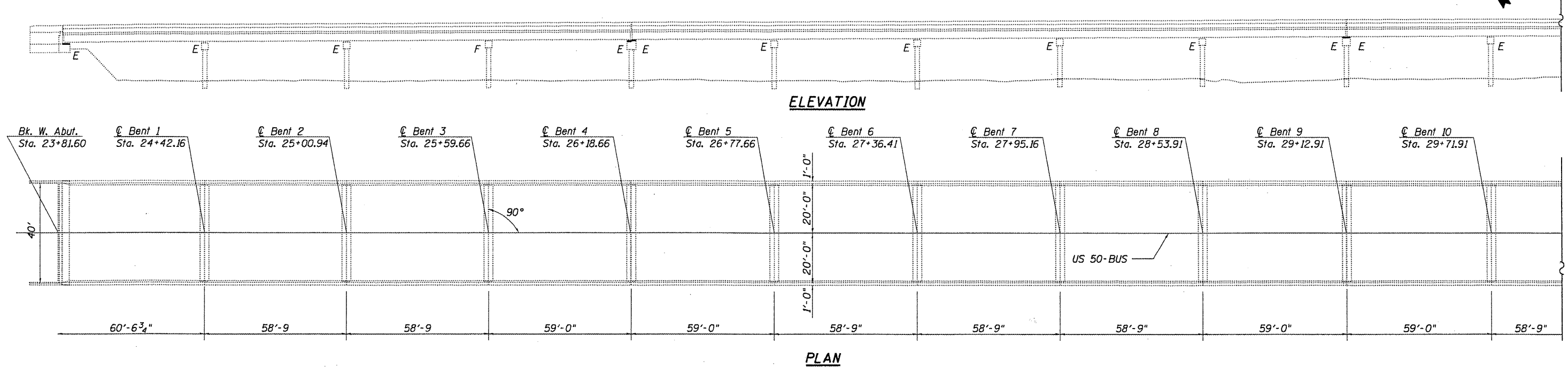
THE TOTAL QUANTITY OF PAINT PAVEMENT MARKING - LINE 4" CONSISTS OF 309 FEET OF YELLOW AND 2,473 FEET OF WHITE.

SUMMARY OF QUANTITIES

CODE NO	ITEM	UNIT	TOTAL QUANTITIES	CONSTRUCTION TYPE CODE
				100% STATE 0014
67100100	MOBILIZATION	L SUM	1	1
70100450	TRAFFIC CONTROL AND PROTECTION, STANDARD 701201	L SUM	1	1
70300100	SHORT TERM PAVEMENT MARKING	FOOT	248	248
70301000	WORK ZONE PAVEMENT MARKING REMOVAL	SQ FT	41	41
78001110	PAINT PAVEMENT MARKING - LINE 4"	FOOT	2782	2782
78300100	PAVEMENT MARKING REMOVAL	SQ FT	918	918
Z0064265	CAPE SEAL	SQ YD	5496	5496

FILE NAME =	USER NAME = swartzr	DESIGNED -	REVISED -	STATE OF ILLINOIS DEPARTMENT OF TRANSPORTATION	INDEX OF SHEETS, GENERAL NOTES LOCATION DESCRIPTION & SUMMARY OF QUANTITIES				F.A.S. RTE.	SECTION	COUNTY	TOTAL SHEETS	SHEET NO.
ca:\pwwork\pwwork\swartzr\d0262716\d77	520-shr-index.dgn	DRAWN -	REVISED -		1807	07 BRIDGE REPAIRS 2012-3	LAWRENCE	3	2				
	PLOT SCALE = 100.0000' / in.	CHECKED -	REVISED -		CONTRACT NO. 74520								
	PLOT DATE = 10/5/2011	DATE -	REVISED -		SCALE: NA	SHEET NO. 1 OF 1 SHEETS	STA. TO STA.						

The existing eighteen span reinforced concrete deck on continuous steel I-beams and precast concrete beams structure was constructed in 1977 as FAI-1 section 1B-1 at Sta. 29+99.84. SN. 051-0053 carries FAS 1807 (US BUS 50) over the Embarras River. The proposed project consists of application of a Cape Seal to the HMA Wearing Surface.



FILE NAME =	USER NAME = swartzw	DESIGNED - KLB	REVISED -	STATE OF ILLINOIS DEPARTMENT OF TRANSPORTATION	GENERAL PLAN & ELEVATION SN. 051-0053	F.A.S. RTE.	SECTION	COUNTY	TOTAL SHEETS	SHEET NO.	
c:\pwwork\pwwork\swartzw\10262716\077	520-shr-brp1npr-f-0510053.dgn	DRAWN - KLB	REVISED -			1807	07 BRIDGE REPAIRS 2012-3	LAWRENCE	3	3	
	PLOT SCALE = 40,0000' / in.	CHECKED - MEA	REVISED -			CONTRACT NO. 74520					
	PLOT DATE = 10/5/2011	DATE - 03/25/11	REVISED -			ILLINOIS FED. AID PROJECT					
					SCALE: NA	SHEET NO. 1 OF 1 SHEETS		STA.	TO STA.		