

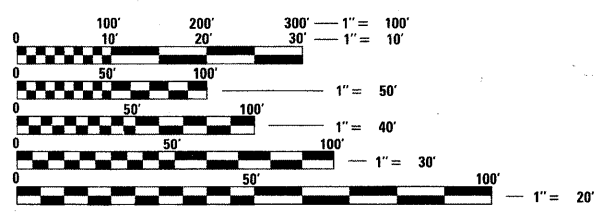
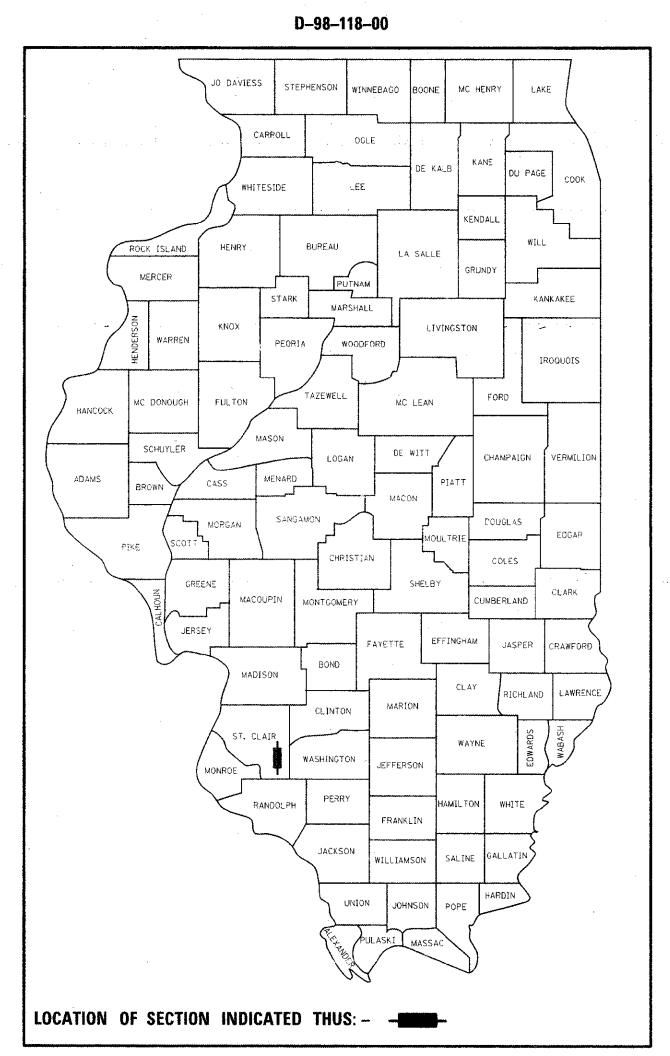
F.A.P. RTE.	SECTION	COUNTY	TOTAL SHEETS	SHEET NO.
680	47-1BR	ST. CLAIR	44	1
FED. ROAD DIST. NO.		ILLINOIS	CONTRACT NO. 76388	

STATE OF ILLINOIS
DEPARTMENT OF TRANSPORTATION
DIVISION OF HIGHWAYS

PROPOSED
HIGHWAY PLANS

FAP ROUTE 680 (IL 4)
SECTION 47-1BR
PROJECT BRF-0680(003)
STRUCTURE REPLACEMENT OVER LITTLE MUD CREEK
ST. CLAIR COUNTY
C-98-064-11

FOR INDEX OF SHEETS, SEE SHEET NO. 2



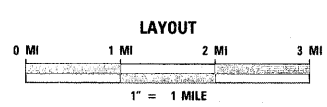
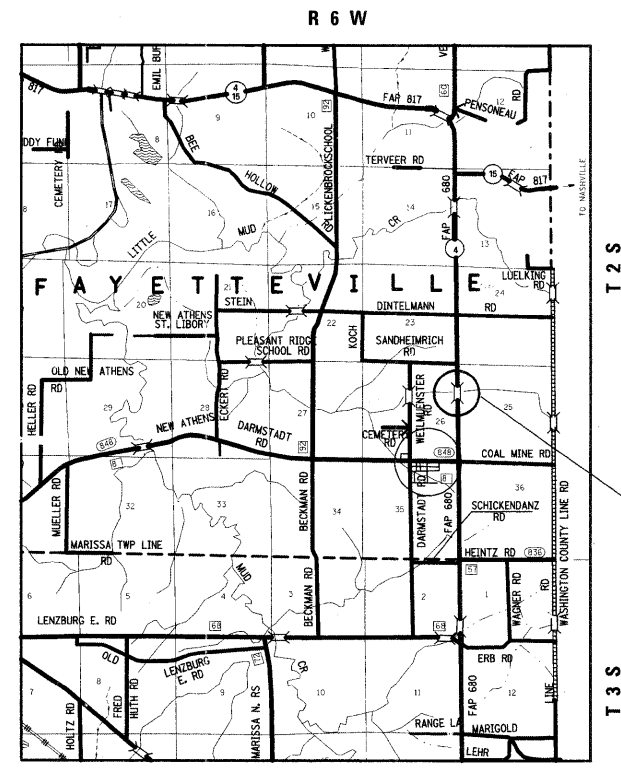
FULL SIZE PLANS HAVE BEEN PREPARED USING STANDARD ENGINEERING SCALES. REDUCED SIZED PLANS WILL NOT CONFORM TO STANDARD SCALES. IN MAKING MEASUREMENTS ON REDUCED PLANS, THE ABOVE SCALES MAY BE USED.

J.U.L.I.E.
 JOINT UTILITY LOCATION INFORMATION FOR EXCAVATION
 1-800-892-0123
 OR 811

PROJECT ENGINEER: PATTI LeBEAU (618) 346-3179
 PROJECT MANAGER: REBECCA THARP (618) 346-3323

CONTRACT NO. 76388

ADT = 2900 (2009)
 ADT = 3700 (2029)
 SU = 5.3%
 MU = 6.1%



PROPOSED DOUBLE BOX CULVERT OVER
 LITTLE MUD CREEK
 STA 337+64
 SN 082-0082 (E), SN. 082-2021 (P)
 BEGIN STA 333+00
 END STA 342+50

DESIGN DESIGNATION
 N/A

GROSS LENGTH = 0.180 MI
 NET LENGTH = 0.180 MI

LATITUDE: 38.3311
 LONGITUDE: -89.7224

STATE OF ILLINOIS
 DEPARTMENT OF TRANSPORTATION
 DIVISION OF HIGHWAYS

SUBMITTED October 21 20 11
Chris M. Blum
 DEPUTY DIRECTOR OF HIGHWAYS, REGION 5 ENGINEER

Scott E. Stitt P.E.
 acting ENGINEER OF DESIGN AND ENVIRONMENT

December 9 20 11
William R. Fiegl
 DIRECTOR OF HIGHWAYS, CHIEF ENGINEER

PRINTED BY THE AUTHORITY
OF THE STATE OF ILLINOIS