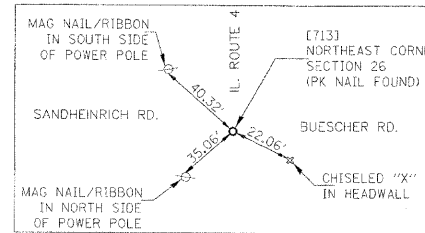
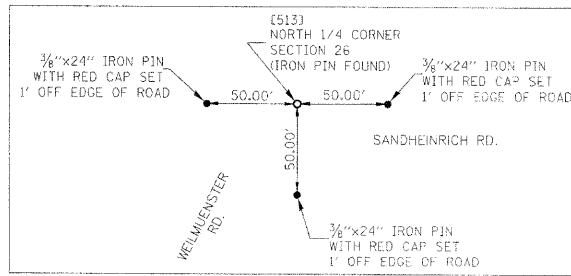
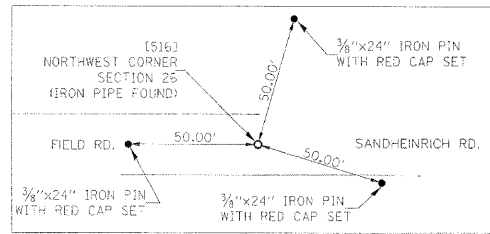
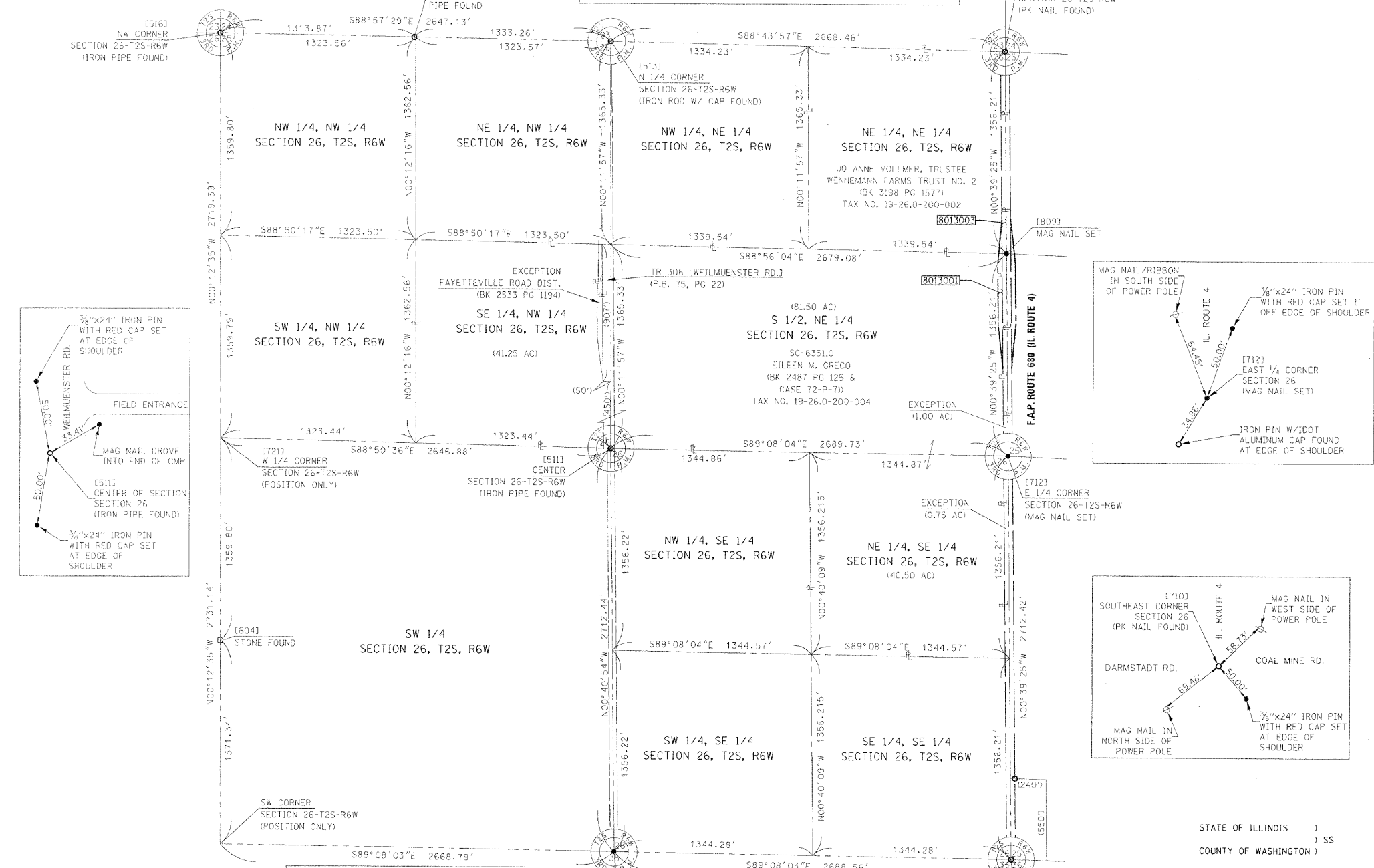


SECTION 26, T2S, R6W, OF THE 3RD PM, ST. CLAIR COUNTY, ILLINOIS

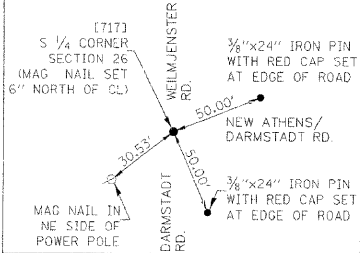
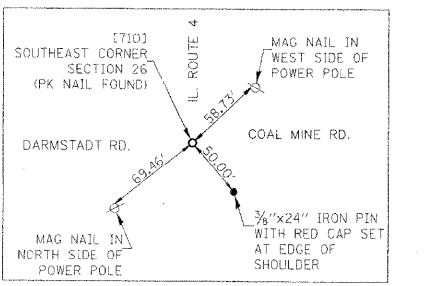
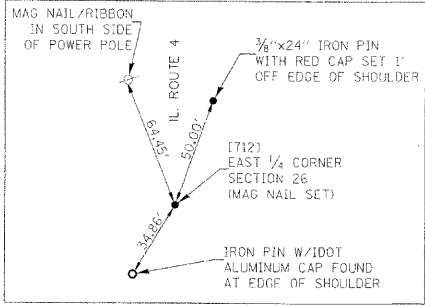
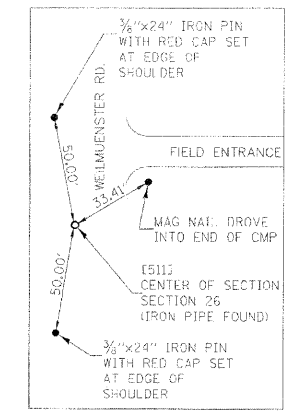
SEE BASIS OF COORDINATES AND BEARINGS STATEMENT ON SHEET 2



SPACE RESERVED FOR RECORDING OFFICER



PNT # (DESCRIPTION)	COORDINATE TABLE		
	STATION	OFFSET	
511 (PIPE FOUND CENTER SECT. 26)			605,290.6340 2,421,464.9200
513 (IR W/CAP FOUND N 1/4 CORNER SECT. 26)			608,021.2730 2,421,455.4310
516 (PIPE FOUND NW CORNER SECT. 26)			608,069.4150 2,418,808.7410
526 (PIPE FOUND)			603,800.3720 2,426,827.2110
604 (STONE FOUND)			603,990.0520 2,418,823.6800
710 (PK NAIL FOUND SE CORNER SECT. 26)			602,537.7599 2,424,185.4406
712 (MAG NAIL SET E 1/4 CORNER SECT. 26)			605,250.0054 2,424,154.3397
713 (PK NAIL FOUND NE CORNER SECT. 26)			607,962.2508 2,424,123.2372
717 (MAG NAIL SET S 1/4 CORNER SECT. 26)			602,578.3886 2,421,497.1876
721 (W 1/4 CORNER SECT. 26)			605,349.8429 2,418,818.7003
809 (MAG NAIL SET NE CNR S 1/2, NE 1/4 SECTION 26)	339+68.85	0.44'RT	606,506.1281 2,424,138.7880



ASSOCIATED PROFESSIONALS, INC.
 17625 Mockingbird Road, P.O. Box 311
 Nashville, Illinois 62263
 Ph. 618-478-9000 Fax 618-478-9001
 web: www.apisurvey.com
 IDPR Design Firm License No. 184-001303

ILLINOIS DEPARTMENT OF TRANSPORTATION
TOTAL HOLDINGS SKETCH
 F.A.P. ROUTE 680 (IL 4)
 SECTION 47-1BR
 ST. CLAIR COUNTY
 JOB NO. R-98-013-10

SCALE: 1" = 400'

ILLINOIS DEPARTMENT OF TRANSPORTATION
 DIVISION OF HIGHWAYS/REGION 5/DISTRICT 8
 1102 EASTPORT PLAZA DRIVE
 COLLINSVILLE, ILLINOIS 62234-6198

F.A.P. RTE.	SECTION	COUNTY	TOTAL SHEETS NO.	SHEET NO.
680	47-1BR	ST. CLAIR	44	27
			CONTRACT NO. 76388	

FED. ROAD DIST. NO. 8 ILLINOIS FED. AID PROJECT

STATE OF ILLINOIS)
) SS
 COUNTY OF WASHINGTON)
 I, GARY S. MUELLER, AN ILLINOIS PROFESSIONAL LAND SURVEYOR, CERTIFY THAT I HAVE SURVEYED THE PLAT OF HIGHWAY SHOWN HEREON AND THAT THIS PROFESSIONAL SERVICE CONFORMS TO THE CURRENT ILLINOIS MINIMUM STANDARDS FOR A BOUNDARY SURVEY OF THE EXISTING RIGHT OF WAY SHOWN HEREON.
 DATED 1/20/2011
 GARY S. MUELLER, PLS NO. 3332
 LICENSE EXPIRATION DATE: 11/30/2012



COMPLETION DATE OF FIELD WORK PERFORMED	
LAND SURVEY: 12/8/10	ROW STAKING: