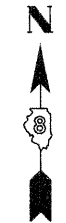
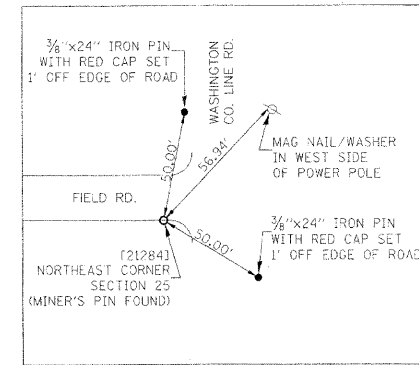
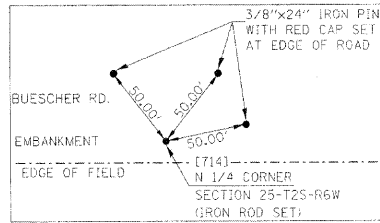
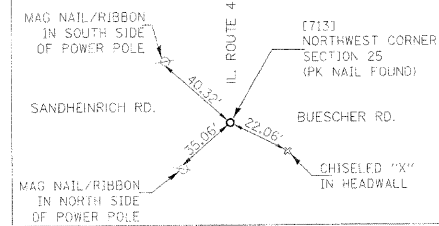
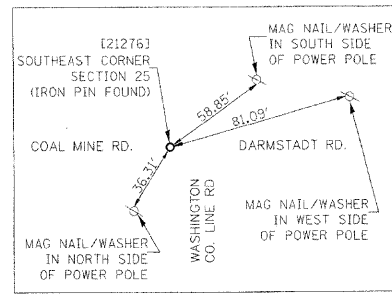
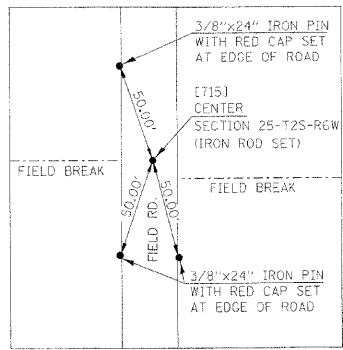
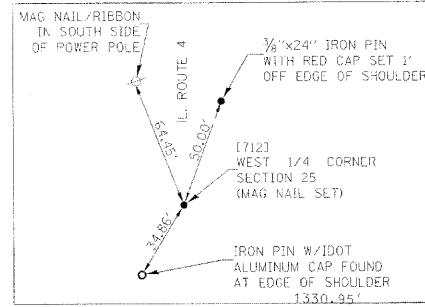
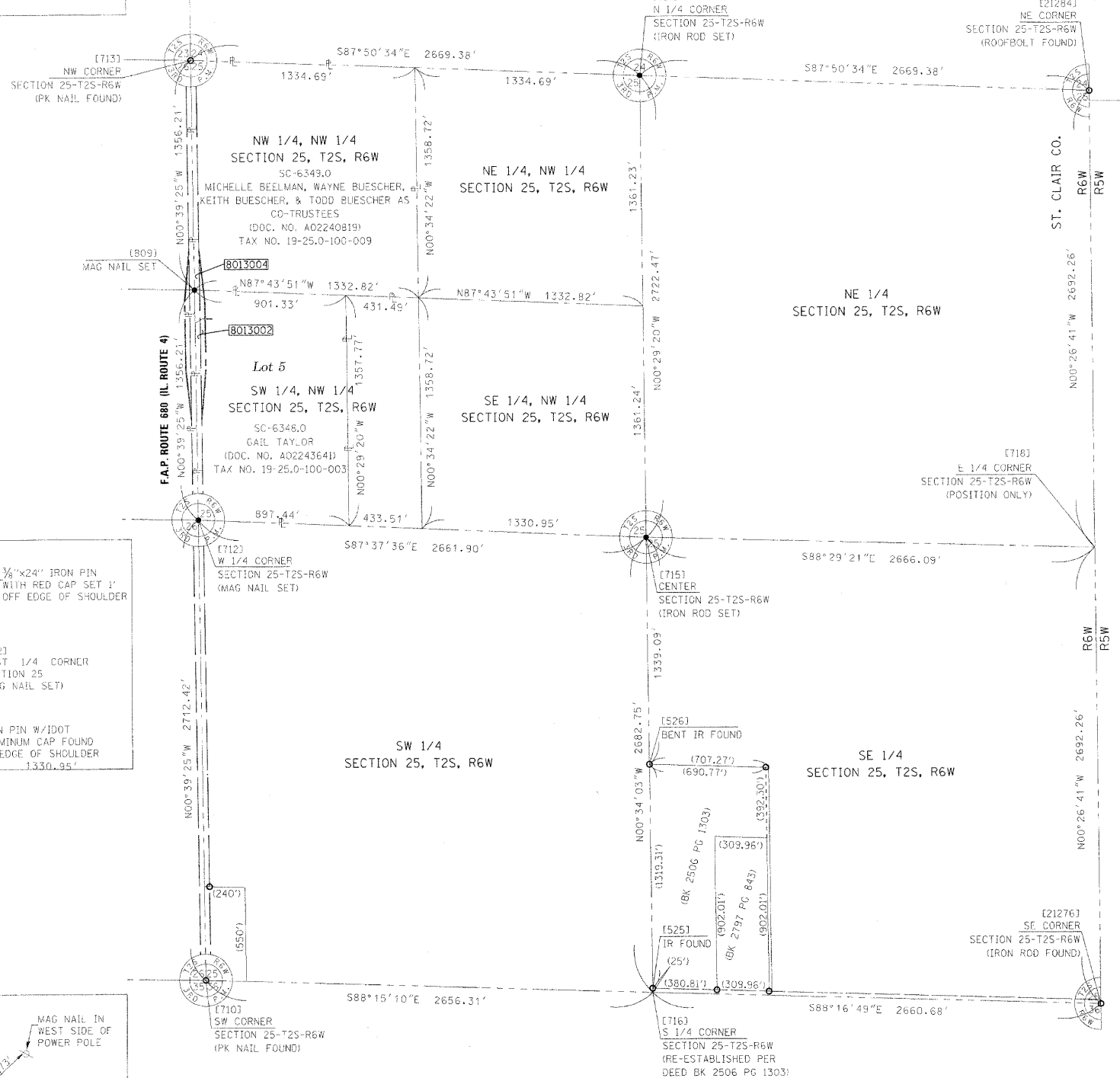


SECTION 25, T2S, R6W, OF THE 3RD PM, ST. CLAIR COUNTY, ILLINOIS

SEE BASIS OF COORDINATES AND BEARINGS STATEMENT ON SHEET 2



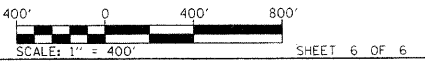
SPACE RESERVED FOR RECORDING OFFICER



COORDINATE TABLE				
PNT # (DESCRIPTION)	STATION	OFFSET	NORTH	EAST
525 (IR FOUND)			602,481.7730	2,426,840.2720
526 (BENT IR FOUND)			603,800.3720	2,426,827.2110
710 (PK NAIL FOUND SW CORNER SECT. 25)			602,537.7599	2,424,185.4406
712 (MAG NAIL SET W 1/4 CORNER SECT. 25)			605,250.0054	2,424,154.3397
713 (PK NAIL FOUND NW CORNER SECT. 25)			607,962.2508	2,424,231.2312
714 (IR SET N 1/4 CORNER SECT. 25)			607,861.7647	2,426,790.7232
715 (IR SET CENTER SECT. 25)			605,139.3926	2,426,813.9476
716 (S 1/4 CORNER SECT. 25)			602,456.7742	2,426,840.5196
718 (E 1/4 CORNER SECT. 25)			605,069.1033	2,429,479.1073
809 (MAG NAIL SET NW CORNER SW 1/4, NW 1/4 SECTION 25)	339+68.85	0.44'RT	606,606.1281	2,424,138.7880
21276 (IR FOUND SE CORNER SECT. 25)			602,376.9280	2,429,500.0060
21284 (ROOFBOLT FOUND NE CORNER SECT. 25)			607,761.2786	2,429,458.2086

**ASSOCIATED PROFESSIONALS, INC.**  
 17625 Mockingbird Road, P.O. Box 311  
 Nashville, Illinois 62263  
 Ph 618-478-9000 Fax 618-478-9001  
 web: www.apisurvey.com  
 IDPR Design Firm License No. 184-001303

ILLINOIS DEPARTMENT OF TRANSPORTATION  
**TOTAL HOLDINGS SKETCH**  
 FAP ROUTE 680 (IL 4)  
 SECTION 47-1BR  
 ST. CLAIR COUNTY  
 JOB NO. R-98-013-10



STATE OF ILLINOIS )  
 ) SS  
 COUNTY OF WASHINGTON )  
 I, GARY S. MUELLER, AN ILLINOIS PROFESSIONAL LAND SURVEYOR, CERTIFY THAT I HAVE SURVEYED THE PLAT OF HIGHWAY SHOWN HEREON AND THAT THIS PROFESSIONAL SERVICE CONFORMS TO THE CURRENT ILLINOIS MINIMUM STANDARDS FOR A BOUNDARY SURVEY OF THE EXISTING RIGHT OF WAY SHOWN HEREON.  
 DATED 3/23/2011



GARY S. MUELLER, PLS NO. 3332  
 LICENSE EXPIRATION DATE: 11/30/2012

COMPLETION DATE OF FIELD WORK PERFORMED	
LAND SURVEY:	12/8/10
ROW STAKING:	

F.A.P. RTE.	SECTION	COUNTY	TOTAL SHEETS	SHEET NO.
680	47-1BR	ST. CLAIR	44	28
				CONTRACT NO. 76388