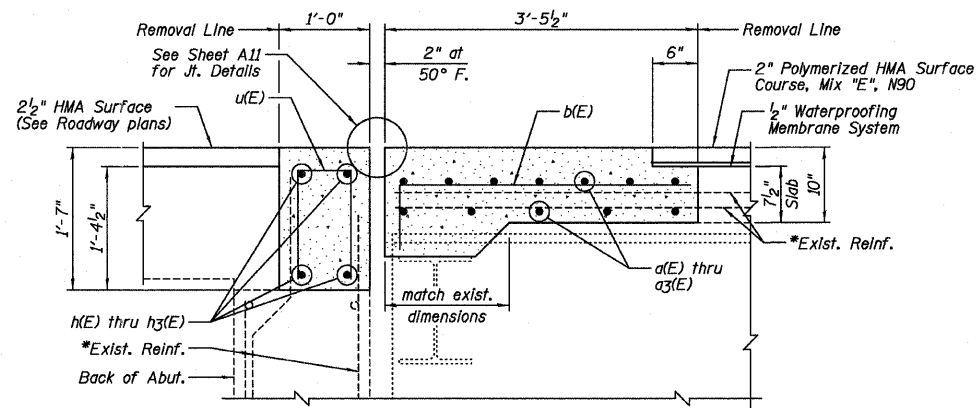


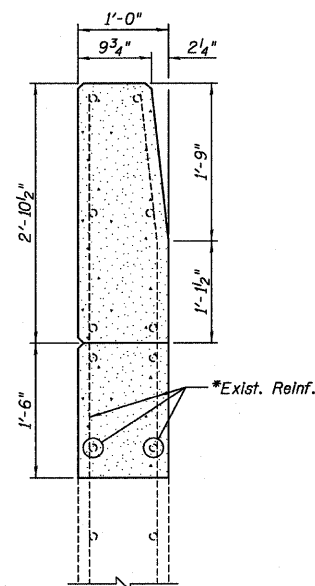
SECTION A-A
(Horizontal Dimensions • Rt. L's)



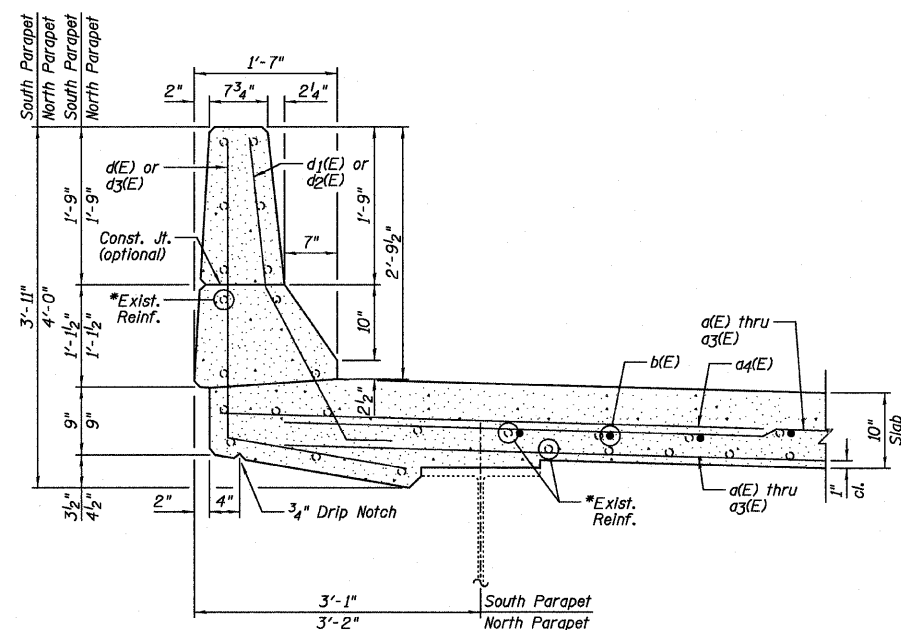
SECTION B-B
(Horizontal Dimensions • Rt. L's)

BILL OF MATERIAL

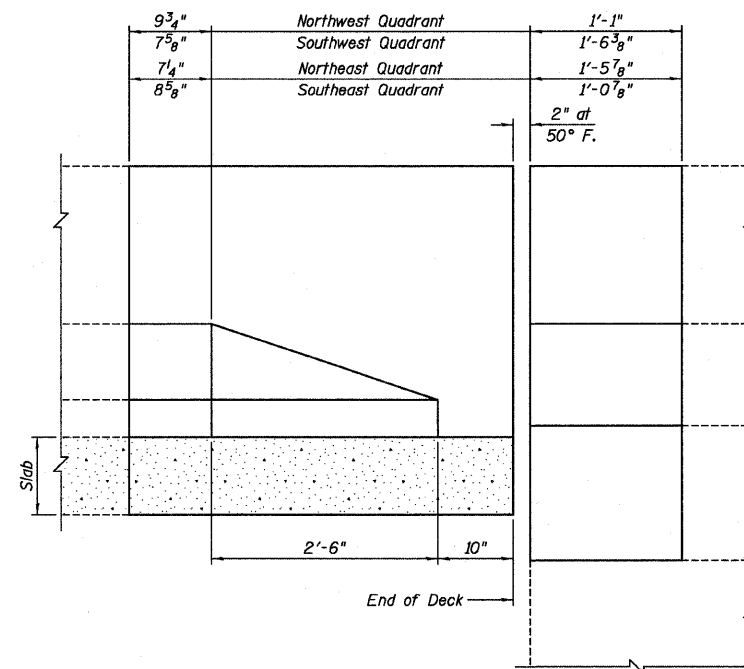
Bar	No.	Size	Length	Shape
a4(E)	16	#6	6'-6"	—
a5(E)	36	#5	37'-7"	—
a6(E)	12	#5	37'-1"	—
b1(E)	156	#5	4'-2"	—
d(E)	7	#4	5'-2"	L
d1(E)	2	#5	3'-11"	L
d2(E)	12	#5	4'-4"	L
d3(E)	7	#4	5'-2"	L
h4(E)	12	#5	37'-3"	—
h5(E)	4	#5	36'-8"	—
u(E)	151	#4	3'-2"	—
Item		Unit	Quantity	
Concrete Removal		Cu. Yd.	25.0	
Concrete Superstructure		Cu. Yd.	29.4	
Reinforcement Bars, Epoxy Coated		Pound	3,760	
Bar Splicers		Each	32	



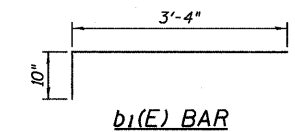
SECTION THRU WINGWALL



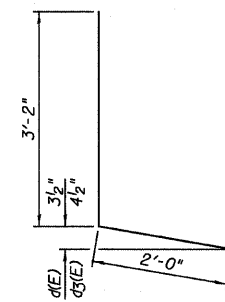
SECTION THRU PARAPET



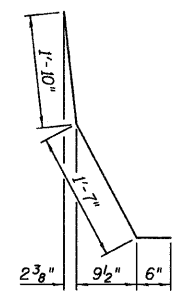
INSIDE FACE PARAPET ELEVATION
(Dimensions measured along inside face of parapet)



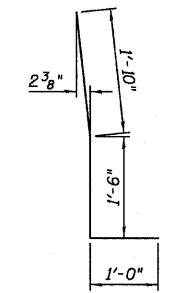
b1(E) BAR



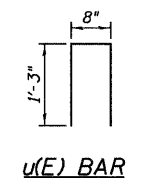
d(E) & d3(E) BAR



d1(E) BAR



d2(E) BAR



u(E) BAR

NOTES:

- Existing reinforcement extending into the removal area shall be cleaned, straightened and incorporated into the new construction. Any reinforcement bars that are damaged during concrete removal shall be replaced with an approved bar splicer or anchorage system. Cost shall be included with Concrete Removal.
- For location of Section A-A and B-B, see Sheet A9.

Farnsworth GROUP, INC.
2709 McGraw Drive
Bloomington, Illinois 61704
309/663-8436, 309/663-1571 fax

DESIGNED - JCZ
CHECKED - JML
DRAWN - DJM/JWK
DATE - 12/05/11

REVIS
REVIS
REVIS
REVIS

REVIS
REVIS
REVIS
REVIS

**STATE OF ILLINOIS
DEPARTMENT OF TRANSPORTATION**

**JOINT REPLACEMENT DETAILS, WESTBOUND ROADWAY
STRUCTURE NO. 082-0167 (E.B.)
STRUCTURE NO. 082-0168 (W.B.)**

SHEET NO. A10 OF 21 SHEETS

F.A.I. RTE.	SECTION	COUNTY	TOTAL SHEETS	SHEET NO.
64	82-(3,4)RS	ST. CLAIR	167	110
				CONTRACT NO. 76415
ILLINOIS FED. AID PROJECT				