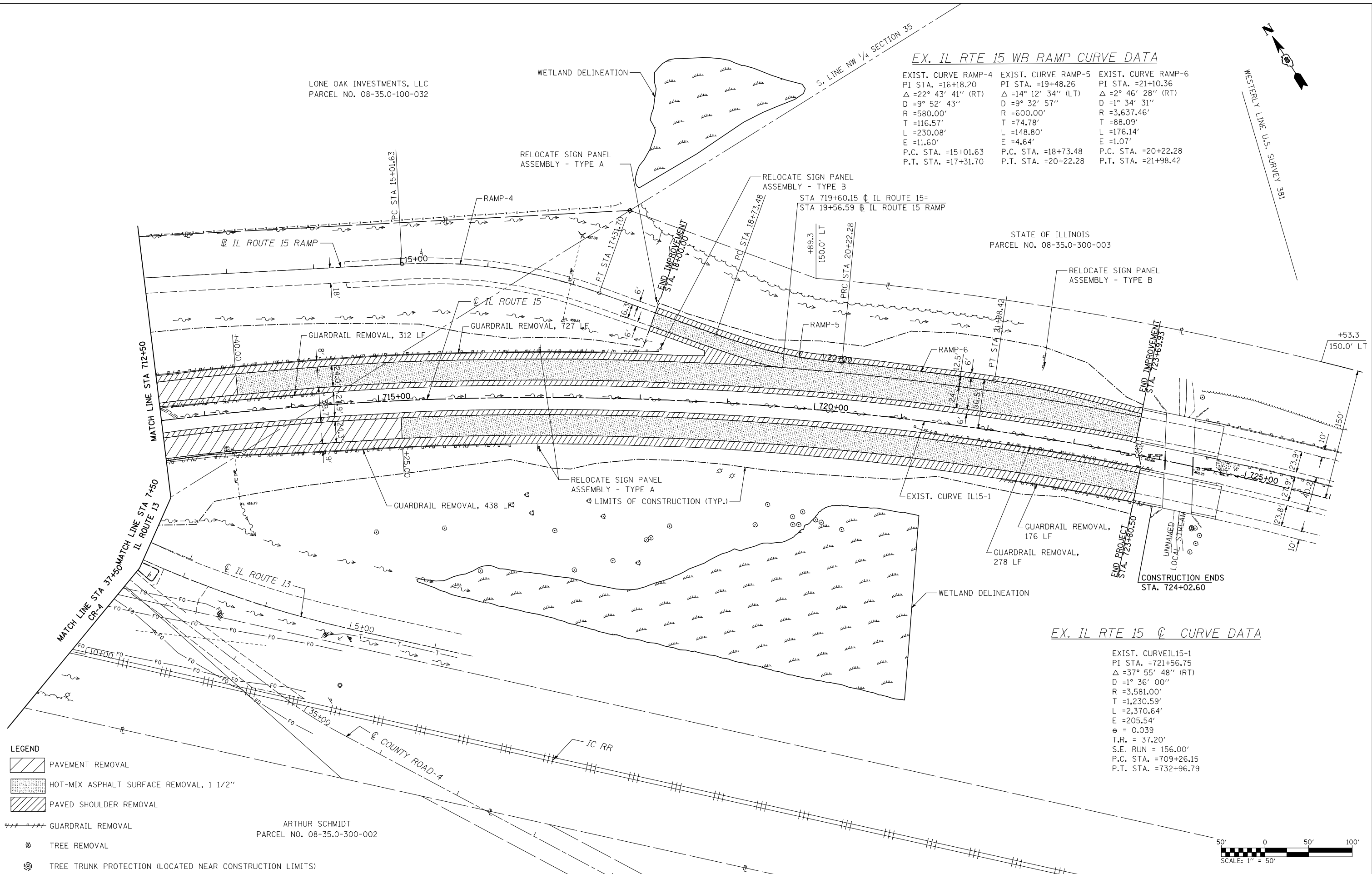


EX. IL RTE 15 WB RAMP CURVE DATA

EXIST. CURVE RAMP-4	EXIST. CURVE RAMP-5	EXIST. CURVE RAMP-6
PI STA. =16+18.20	PI STA. =19+48.26	PI STA. =21+10.36
Δ =22° 43' 41" (RT)	Δ =14° 12' 34" (LT)	Δ =2° 46' 28" (RT)
D =9° 52' 43"	D =9° 32' 57"	D =1° 34' 31"
R =580.00'	R =600.00'	R =3,637.46'
T =116.57'	T =74.78'	T =88.09'
L =230.08'	L =148.80'	L =176.14'
E =11.60'	E =4.64'	E =1.07'
P.C. STA. =15+01.63	P.C. STA. =18+73.48	P.C. STA. =20+22.28
P.T. STA. =17+31.70	P.T. STA. =20+22.28	P.T. STA. =21+98.42

EX. IL RTE 15 C CURVE DATA

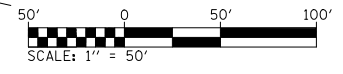
EXIST. CURVE IL15-1
PI STA. =721+56.75
Δ =37° 55' 48" (RT)
D =1° 36' 00"
R =3,581.00'
T =1,230.59'
L =2,370.64'
E =205.54'
e = 0.039
T.R. = 37.20'
S.E. RUN = 156.00'
P.C. STA. =709+26.15
P.T. STA. =732+96.79



LEGEND

- PAVEMENT REMOVAL
- HOT-MIX ASPHALT SURFACE REMOVAL, 1 1/2"
- PAVED SHOULDER REMOVAL
- GUARDRAIL REMOVAL
- TREE REMOVAL
- TREE TRUNK PROTECTION (LOCATED NEAR CONSTRUCTION LIMITS)

ARTHUR SCHMIDT
PARCEL NO. 08-35.0-300-002



FILE NAME = D876884-sht-removals.dgn	USER NAME = thompard	DESIGNED GC	REVISED -	STATE OF ILLINOIS DEPARTMENT OF TRANSPORTATION	EXISTING PLAN AND REMOVALS			F.A.P. RTE 103	SECTION 27-1-VHB-1	COUNTY ST. CLAIR	TOTAL SHEETS 277	SHEET NO. 25
	MODEL NAME = \$MODELNAME\$	DRAWN RDT	REVISED -		SCALE: 1"=50'	SHEET NO. 2 OF 2 SHEETS	STA. 712+50.00 TO STA. 726+00.00	CONTRACT NO. 76884				
	PLOT SCALE = 100.0000' / IN.	CHECKED JAP	REVISED -									
	PLOT DATE = 10/20/2011	DATE 10-19-11	REVISED -		ILLINOIS FED. AID PROJECT							