

PART OF THE NW 1/4 OF FRACTIONAL SECTION 35, T. 1 N., R. 8 W., OF THE 3RD P.M., ST. CLAIR COUNTY, ILLINOIS



SPACE RESERVED FOR RECORDING OFFICER

PART OF LOT 3 SECTION 35

PART OF LOT 4 SECTION 35  
PLAT BOOK 'C', PAGE 379 RECORD  
MARCH 29TH, 1870 BY COUNTY SURVEYOR

**HDR** HDR Engineering, Inc.  
1339 Walnut St. Murphysboro, IL. 62966-2026  
618-694-6808  
Illinois Professional Design Firm #184000829

ILLINOIS DEPARTMENT OF TRANSPORTATION  
PLAT OF HIGHWAYS  
FAP ROUTE 103 (IL ROUTE 15)  
SECTION 27-1-VHB-1  
ST. CLAIR COUNTY  
JOB NO. R-98-020-09

ILLINOIS ROUTE 15 - STATION 692+87.7 TO STATION 704+00

60' 0 60' 120'  
SCALE: 1" = 60'

SHEET 3 OF 6

ILLINOIS DEPARTMENT OF TRANSPORTATION  
DIVISION OF HIGHWAYS/REGION 5/DISTRICT 8  
1102 EASTPORT PLAZA DRIVE  
COLLINSVILLE, ILLINOIS 62234-6198

F.A.P. RTE.	SECTION	COUNTY	TOTAL SHEETS	SHEET NO.
103	27-1-VHB-1	ST. CLAIR	277	93

CONTRACT NO. 76884

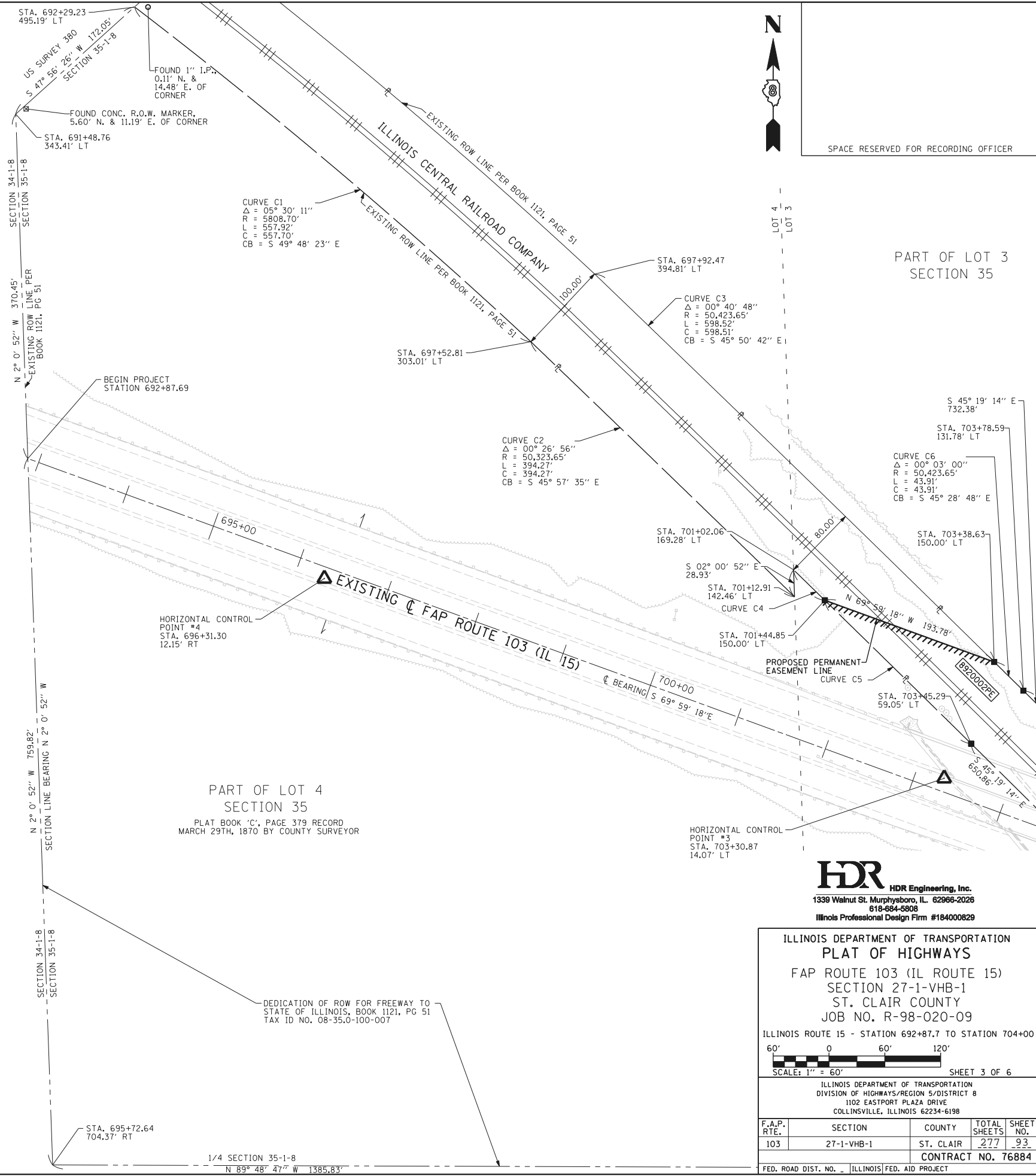
FED. ROAD DIST. NO. ILLINOIS FED. AID PROJECT

COORDINATE TABLE

STATION	OFFSET	NORTH	EAST
691+48.76	343.41' LT	665246.3177	354406.3082
692+29.23	495.19' LT	665361.4033	354533.8579
692+87.69	0.00'	664876.1001	354419.3302
695+72.64	704.37' RT	664116.7466	354446.0396
696+31.30	12.15' RT	664747.0978	354738.0392
701+44.85	150.00' LT	664723.7133	355276.0728
703+30.87	14.07' LT	664532.3277	355404.3457
703+38.63	150.00' LT	664657.3996	355458.1535
703+45.29	59.05' LT	664569.6594	355433.2793
703+78.59	131.78' LT	664626.6096	355489.4636

CURVE TABLE

CURVE	DEFLECTION	RADIUS	LENGTH	CHORD	CHORD BEARING
C1	05° 30' 11"	5808.70'	557.92'	557.70'	S 49° 48' 23" E
C2	00° 26' 56"	50,323.65'	394.27'	394.27'	S 45° 57' 35" E
C3	00° 40' 48"	50,423.65'	598.52'	598.51'	S 45° 50' 42" E
C4	00° 03' 12"	50,343.65'	46.94'	46.94'	S 45° 43' 56" E
C5	00° 15' 02"	50,343.65'	220.11'	220.11'	S 45° 34' 49" E
C6	00° 03' 00"	50,423.65'	43.91'	43.91'	S 45° 28' 48" E



STATE OF ILLINOIS )  
COUNTY OF JACKSON )

I, GARY W. RAINES, AN ILLINOIS PROFESSIONAL LAND SURVEYOR,  
STATE THAT I HAVE SURVEYED THE PLAT OF HIGHWAY SHOWN HEREON AND THAT THIS  
PROFESSIONAL SERVICE CONFORMS TO THE CURRENT ILLINOIS MINIMUM STANDARDS FOR  
A BOUNDARY SURVEY FOR THE PROPOSED PARCEL(S) TO BE ACQUIRED BY THE STATE OF  
ILLINOIS, DEPARTMENT OF TRANSPORTATION, SHOWN HEREON.

DATED \_\_\_\_\_

GARY W. RAINES, PLS NO. 2428  
LICENSE EXPIRATION DATE: 11/30/2012

DEDICATION OF ROW FOR FREEWAY TO  
STATE OF ILLINOIS, BOOK 1121, PG 51  
TAX ID NO. 08-35.0-100-007

COMPLETION DATE OF FIELD WORK PERFORMED	
LAND SURVEY: 11/02/2010	ROW STAKING: