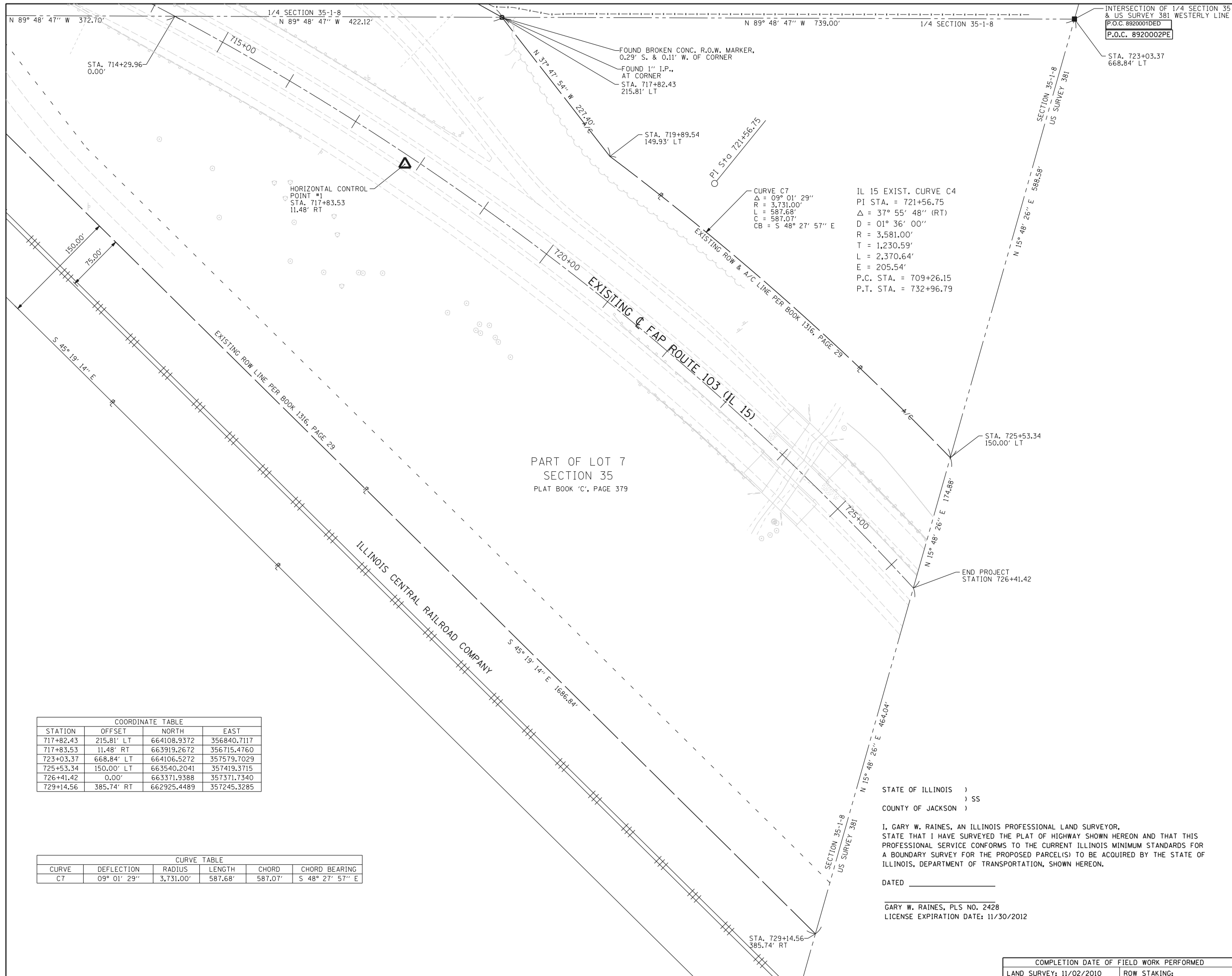


PART OF THE NW 1/4 OF FRACTIONAL SECTION 35, T. 1 N., R. 8 W., OF THE 3RD P.M., ST. CLAIR COUNTY, ILLINOIS



N
8
REVISED 10/4/11
SPACE RESERVED FOR RECORDING OFFICER

1/4 SECTION 35-1-8
N 89° 48' 47" W 422.12'

N 89° 48' 47" W 739.00' 1/4 SECTION 35-1-8

INTERSECTION OF 1/4 SECTION 35 & US SURVEY 381 WESTERLY LINE
P.O.C. 892001DED
P.O.C. 892002PE

STA. 714+29.96
0.00'

FOUND BROKEN CONC. R.O.W. MARKER,
0.29' S. & 0.11' W. OF CORNER
FOUND 1" I.P.,
AT CORNER
STA. 717+82.43
215.81' LT

STA. 723+03.37
668.84' LT

HORIZONTAL CONTROL
POINT #1
STA. 717+83.53
11.48' RT

STA. 719+89.54
149.93' LT

PI STA 721+56.75

CURVE C7
Δ = 09° 01' 29"
R = 3,731.00'
L = 587.68'
C = 587.07'
CB = S 48° 27' 57" E

IL 15 EXIST. CURVE C4
PI STA. = 721+56.75
Δ = 37° 55' 48" (RT)
D = 01° 36' 00"
R = 3,581.00'
T = 1,230.59'
L = 2,370.64'
E = 205.54'
P.C. STA. = 709+26.15
P.T. STA. = 732+96.79

PART OF LOT 7
SECTION 35
PLAT BOOK 'C', PAGE 379

STA. 725+53.34
150.00' LT

END PROJECT
STATION 726+41.42

STA. 729+14.56
385.74' RT

COORDINATE TABLE			
STATION	OFFSET	NORTH	EAST
717+82.43	215.81' LT	664108.9372	356840.7117
717+83.53	11.48' RT	663919.2672	356715.4760
723+03.37	668.84' LT	664106.5272	357579.7029
725+53.34	150.00' LT	663540.2041	357419.3715
726+41.42	0.00'	663371.9388	357371.7340
729+14.56	385.74' RT	662925.4489	357245.3285

CURVE TABLE					
CURVE	DEFLECTION	RADIUS	LENGTH	CHORD	CHORD BEARING
C7	09° 01' 29"	3,731.00'	587.68'	587.07'	S 48° 27' 57" E

STATE OF ILLINOIS)
) SS
COUNTY OF JACKSON)

I, GARY W. RAINES, AN ILLINOIS PROFESSIONAL LAND SURVEYOR,
STATE THAT I HAVE SURVEYED THE PLAT OF HIGHWAY SHOWN HEREON AND THAT THIS
PROFESSIONAL SERVICE CONFORMS TO THE CURRENT ILLINOIS MINIMUM STANDARDS FOR
A BOUNDARY SURVEY FOR THE PROPOSED PARCEL(S) TO BE ACQUIRED BY THE STATE OF
ILLINOIS, DEPARTMENT OF TRANSPORTATION, SHOWN HEREON.

DATED _____
GARY W. RAINES, PLS NO. 2428
LICENSE EXPIRATION DATE: 11/30/2012

HDR HDR Engineering, Inc.
1339 Walnut St. Murphysboro, IL. 62966-2026
618-684-5808
Illinois Professional Design Firm #184000829

ILLINOIS DEPARTMENT OF TRANSPORTATION
PLAT OF HIGHWAYS
FAP ROUTE 103 (IL ROUTE 15)
SECTION 27-1-VHB-1
ST. CLAIR COUNTY
JOB NO. R-98-020-09

ILLINOIS ROUTE 15 - STATION 714+00 TO STATION 726+41.4

60' 0 60' 120'
SCALE: 1" = 60'

SHEET 5 OF 6

ILLINOIS DEPARTMENT OF TRANSPORTATION DIVISION OF HIGHWAYS/REGION 5/DISTRICT 8 1102 EASTPORT PLAZA DRIVE COLLINSVILLE, ILLINOIS 62234-6198				
F.A.P. RTE.	SECTION	COUNTY	TOTAL SHEETS	SHEET NO.
103	27-1-VHB-1	ST. CLAIR	277	95
CONTRACT NO. 76884				
FED. ROAD DIST. NO. ILLINOIS FED. AID PROJECT				

COMPLETION DATE OF FIELD WORK PERFORMED	
LAND SURVEY: 11/02/2010	ROW STAKING:

\\CAD\id676884-shf5-rowplan.dgn 12/20/2010 4:21:46 PM