

PART OF THE NW 1/4 OF FRACTIONAL SECTION 35, T. 1 N., R. 8 W., OF THE 3RD P.M., ST. CLAIR COUNTY, ILLINOIS

**SURVEY OF PART OF SECTION 35, TOWNSHIP 1 NORTH, RANGE 8 WEST, OF THE 3RD PRINCIPAL MERIDIAN,
AND OF THE EAST LINE OF US SURVEY 380 AND OF THE WEST LINE OF US SURVEY 381,
IN ST. CLAIR COUNTY, ILLINOIS**

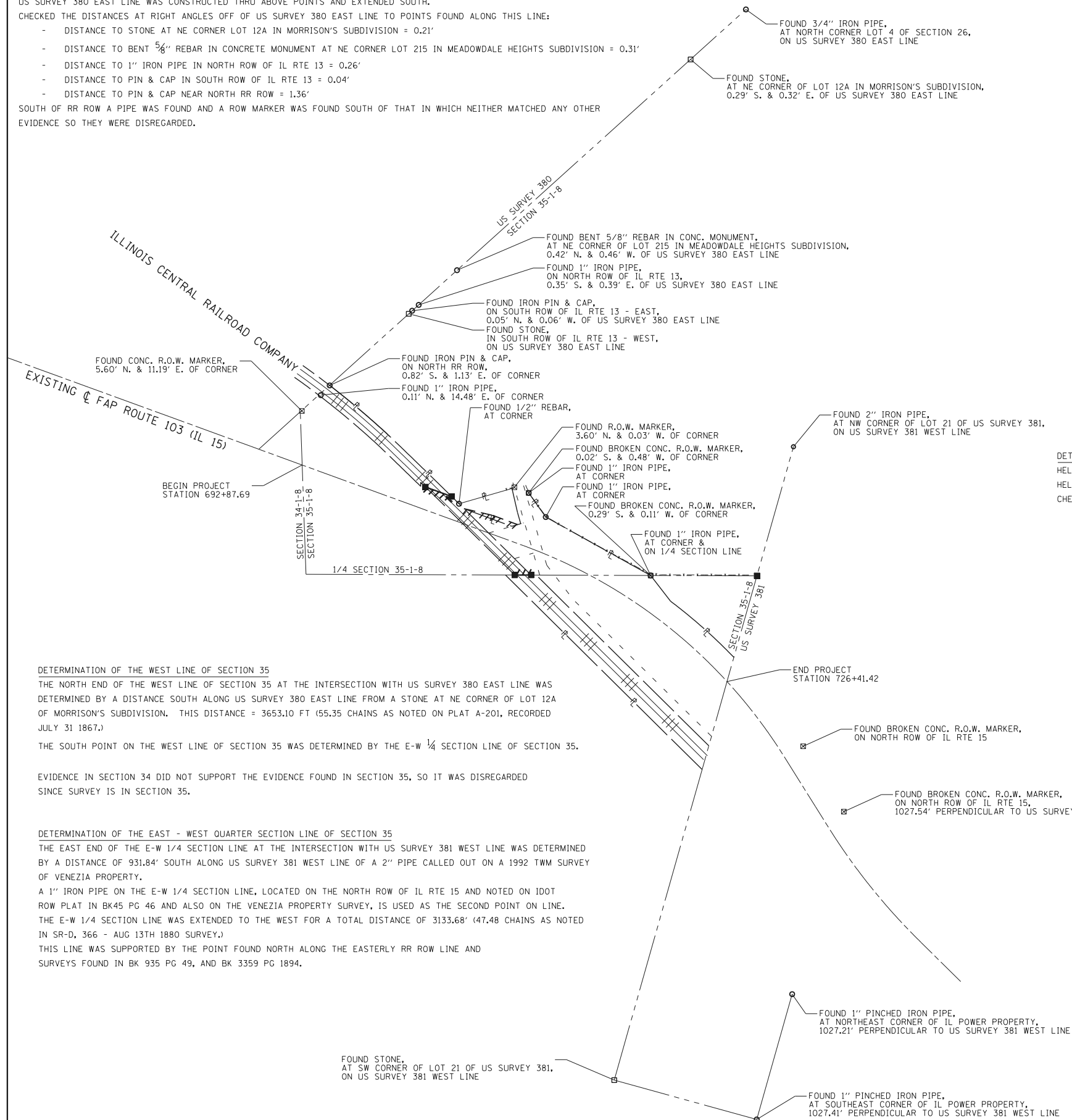
DETERMINATION OF EAST LINE OF US SURVEY 380
 HELD A 3/4" PIPE AT NORTH CORNER OF LOT 4 OF SECTION 26.
 HELD A STONE AT SOUTH ROW OF IL RTE 13.
 US SURVEY 380 EAST LINE WAS CONSTRUCTED THRU ABOVE POINTS AND EXTENDED SOUTH.
 CHECKED THE DISTANCES AT RIGHT ANGLES OFF OF US SURVEY 380 EAST LINE TO POINTS FOUND ALONG THIS LINE:

- DISTANCE TO STONE AT NE CORNER LOT 12A IN MORRISON'S SUBDIVISION = 0.21'
- DISTANCE TO BENT 5/8" REBAR IN CONCRETE MONUMENT AT NE CORNER LOT 215 IN MEADOWDALE HEIGHTS SUBDIVISION = 0.31'
- DISTANCE TO 1" IRON PIPE IN NORTH ROW OF IL RTE 13 = 0.26'
- DISTANCE TO PIN & CAP IN SOUTH ROW OF IL RTE 13 = 0.04'
- DISTANCE TO PIN & CAP NEAR NORTH RR ROW = 1.36'

SOUTH OF RR ROW A PIPE WAS FOUND AND A ROW MARKER WAS FOUND SOUTH OF THAT IN WHICH NEITHER MATCHED ANY OTHER EVIDENCE SO THEY WERE DISREGARDED.



SPACE RESERVED FOR RECORDING OFFICER



DETERMINATION OF THE WEST LINE OF US SURVEY 381 (a.k.a. WEST LINE OF LOT 21)
 HELD A 2" PIPE AT NORTHWEST CORNER OF LOT 21 OF US SURVEY 381.
 HELD A STONE AT SOUTHWEST CORNER OF LOT 21 OF US SURVEY 381.
 CHECKED THE DISTANCES AT RIGHT ANGLES OFF OF US SURVEY 381 WEST LINE TO THE POINTS FOUND ON EAST LINE OF LOT 21.

DETERMINATION OF THE WEST LINE OF SECTION 35
 THE NORTH END OF THE WEST LINE OF SECTION 35 AT THE INTERSECTION WITH US SURVEY 380 EAST LINE WAS DETERMINED BY A DISTANCE SOUTH ALONG US SURVEY 380 EAST LINE FROM A STONE AT NE CORNER OF LOT 12A OF MORRISON'S SUBDIVISION. THIS DISTANCE = 3653.10 FT (55.35 CHAINS AS NOTED ON PLAT A-201, RECORDED JULY 31 1867.)
 THE SOUTH POINT ON THE WEST LINE OF SECTION 35 WAS DETERMINED BY THE E-W 1/4 SECTION LINE OF SECTION 35.

EVIDENCE IN SECTION 34 DID NOT SUPPORT THE EVIDENCE FOUND IN SECTION 35, SO IT WAS DISREGARDED SINCE SURVEY IS IN SECTION 35.

DETERMINATION OF THE EAST - WEST QUARTER SECTION LINE OF SECTION 35
 THE EAST END OF THE E-W 1/4 SECTION LINE AT THE INTERSECTION WITH US SURVEY 381 WEST LINE WAS DETERMINED BY A DISTANCE OF 931.84' SOUTH ALONG US SURVEY 381 WEST LINE OF A 2" PIPE CALLED OUT ON A 1992 TWM SURVEY OF VENEZIA PROPERTY.
 A 1" IRON PIPE ON THE E-W 1/4 SECTION LINE, LOCATED ON THE NORTH ROW OF IL RTE 15 AND NOTED ON IDOT ROW PLAT IN BK45 PG 46 AND ALSO ON THE VENEZIA PROPERTY SURVEY, IS USED AS THE SECOND POINT ON LINE.
 THE E-W 1/4 SECTION LINE WAS EXTENDED TO THE WEST FOR A TOTAL DISTANCE OF 3133.68' (47.48 CHAINS AS NOTED IN SR-D, 366 - AUG 13TH 1880 SURVEY.)
 THIS LINE WAS SUPPORTED BY THE POINT FOUND NORTH ALONG THE EASTERLY RR ROW LINE AND SURVEYS FOUND IN BK 935 PG 49, AND BK 3359 PG 1894.

STATE OF ILLINOIS)
) SS
 COUNTY OF JACKSON)

I, GARY W. RAINES, AN ILLINOIS PROFESSIONAL LAND SURVEYOR,
 STATE THAT I HAVE SURVEYED THE PLAT OF HIGHWAY SHOWN HEREON AND THAT THIS PROFESSIONAL SERVICE CONFORMS TO THE CURRENT ILLINOIS MINIMUM STANDARDS FOR A BOUNDARY SURVEY FOR THE PROPOSED PARCEL(S) TO BE ACQUIRED BY THE STATE OF ILLINOIS, DEPARTMENT OF TRANSPORTATION, SHOWN HEREON.

DATED _____
 GARY W. RAINES, PLS NO. 2428
 LICENSE EXPIRATION DATE: 11/30/2012

HDR HDR Engineering, Inc.
 1339 Walnut St. Murphysboro, IL. 62966-2026
 618-684-5808
 Illinois Professional Design Firm #18400829

**ILLINOIS DEPARTMENT OF TRANSPORTATION
 PLAT OF HIGHWAYS**

FAP ROUTE 103 (IL ROUTE 15)
 SECTION 27-1-VHB-1
 ST. CLAIR COUNTY
 JOB NO. R-98-020-09

ILLINOIS ROUTE 15 - SURVEY

400' 0 400' 800'
 SCALE: 1" = 400' SHEET 6 OF 6

F.A.P. RTE.	SECTION	COUNTY	TOTAL SHEETS	SHEET NO.
103	27-1-VHB-1	ST. CLAIR	277	266

CONTRACT NO. 76884

COMPLETION DATE OF FIELD WORK PERFORMED	
LAND SURVEY: 11/02/2010	ROW STAKING:

FED. ROAD DIST. NO. ILLINOIS FED. AID PROJECT

...CAD\id676884-shf6-rowplan.dgn 12/20/2010 4:23:06 PM