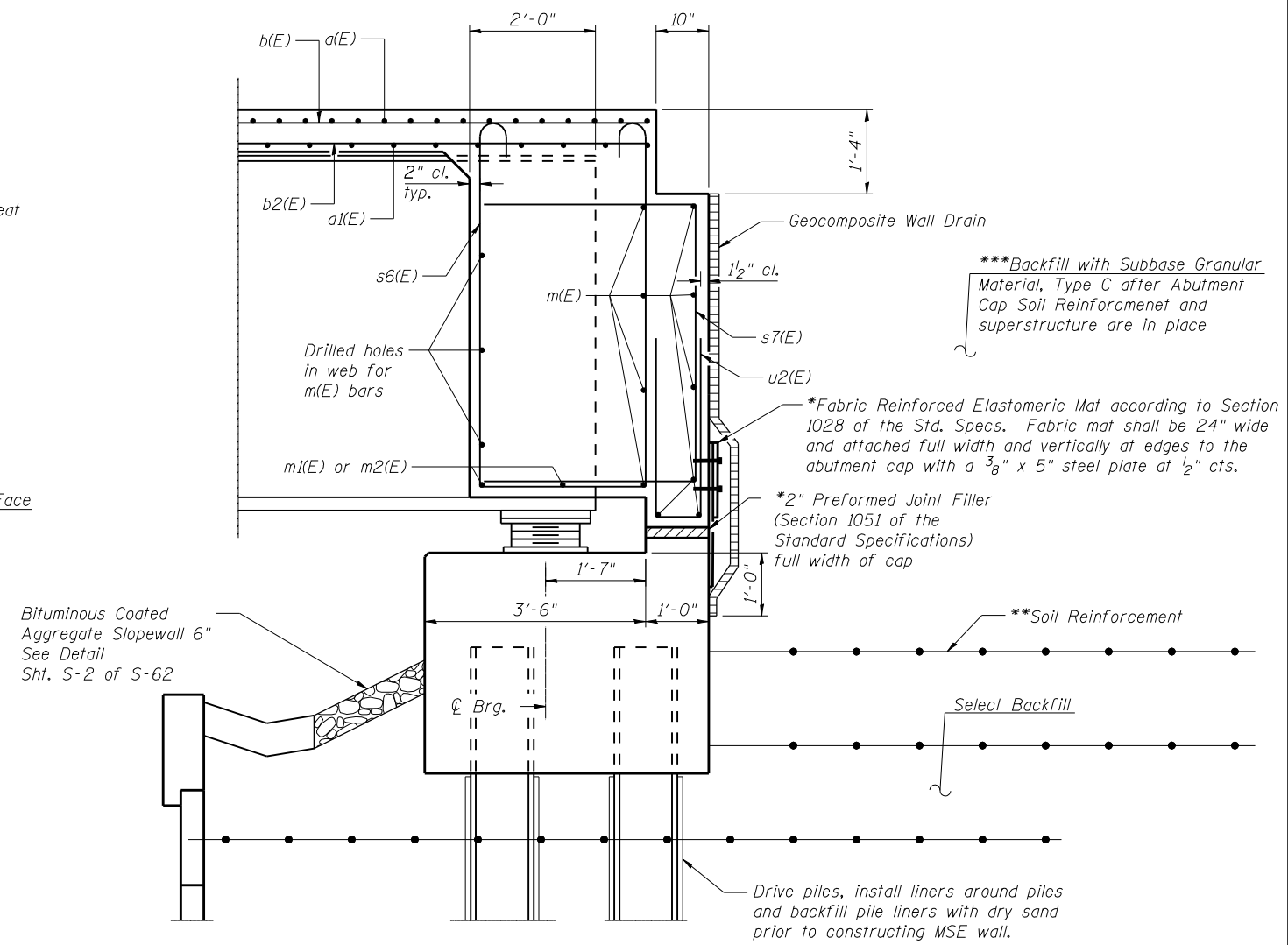


DIAPHRAGM ELEVATION AT WEST ABUTMENT



SECTION A-A

Dimensions at right angles to abutment, except as shown.
* Cost included with Concrete Superstructure.

Notes:
Reinforcement bars in diaphragm are billed with superstructure on sheet S-23 & S-24 of S-62.

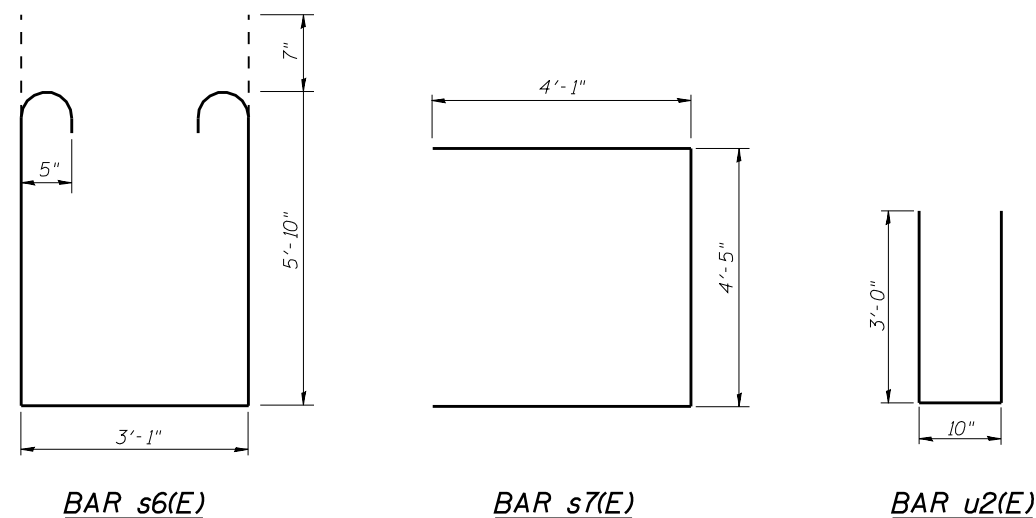
Concrete in diaphragm is included with Concrete Superstructure on sheet S-23 & S-24 of S-62.

The s6(E), s7(E) and u2(E) bars shall be placed parallel to the beams. Spacing for these bars shall be at right angles to the beams.

Bars indicated thus 4 x 3-#6 etc. indicates 4 lines of bars with 3 lengths per line.

** M.S.E. Wall Supplier shall design and supply abutment soil reinforcement to resist earth pressure of 40 pcf equivalent fluid weight applied to back of the abutment cap plus a longitudinal force of 0.7 kips per foot of abutment length transmitted by the bearings to the bridge seats.

***Subbase Granular Material, Type C shall remain uncompacted.



MIN. BAR LAP

#6 bar = 3'-10"

BILL OF MATERIAL

ITEM	UNIT	TOTAL
Subbase Granular Material, Type C	Cu. Yd.	230

(Includes both Eastbound and Westbound Structures)

FILE NAME = 082017-0118-76884-021-WestSuperstr-Det.dgn



USER NAME = brazzara	DESIGNED - RAB	REVISED -
	CHECKED - SAB	REVISED -
PLOT SCALE = 4x0.0000 '1' / IN.	DRAWN - RAB	REVISED -
PLOT DATE = 10/19/2011	CHECKED - JAN	REVISED -

**STATE OF ILLINOIS
DEPARTMENT OF TRANSPORTATION**

**WEST SUPERSTRUCTURE DETAILS
STRUCTURE NO. 082-0117 (E.B.) & 082-0118 (W.B.)**

SHEET NO. S-21 OF S-62 SHEETS

F.A.P. RTE.	SECTION	COUNTY	TOTAL SHEETS	SHEET NO.
103	27-1-VHB-1	ST. CLAIR	277	136
CONTRACT NO. 76884				
ILLINOIS FED. AID PROJECT				