

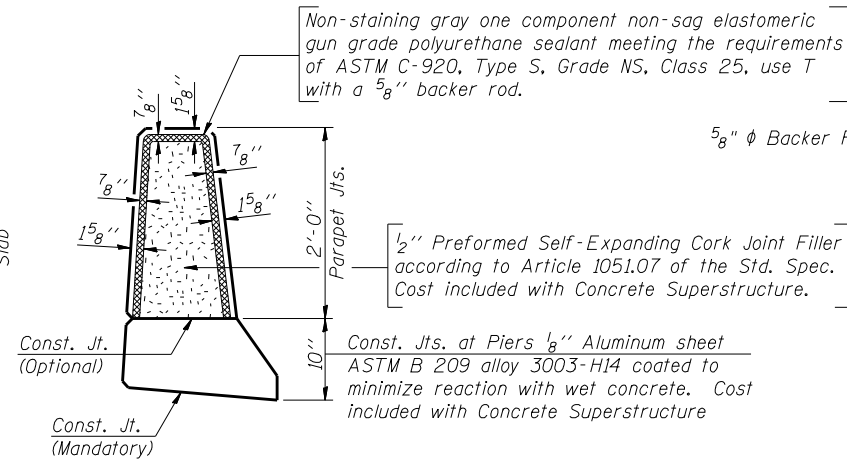
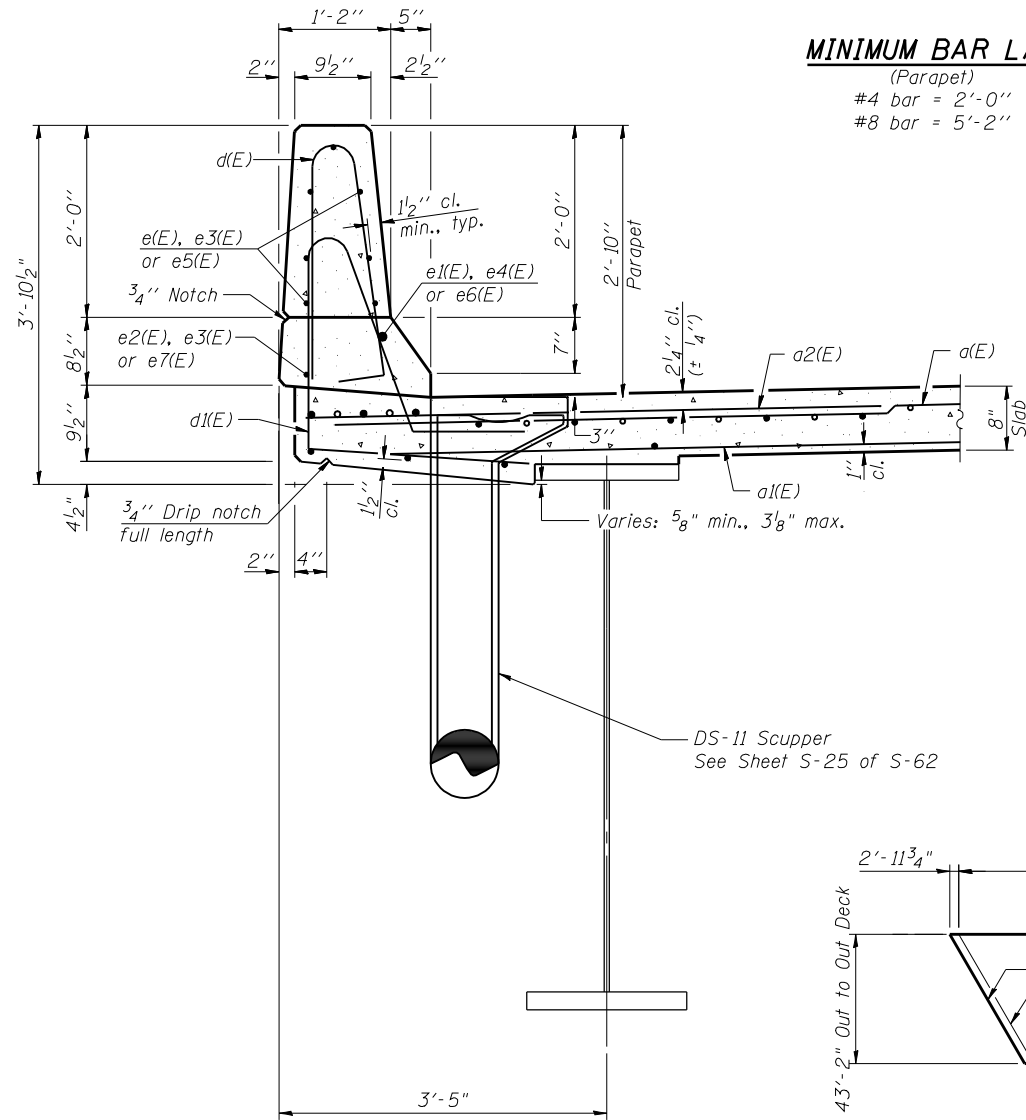
**MINIMUM BAR LAP**

(Parapet)  
 #4 bar = 2'-0"  
 #8 bar = 5'-2"

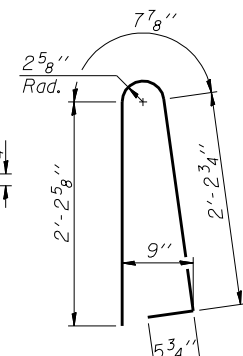
**INSIDE ELEVATION OF PARAPET**

**MIN. BAR LAP**

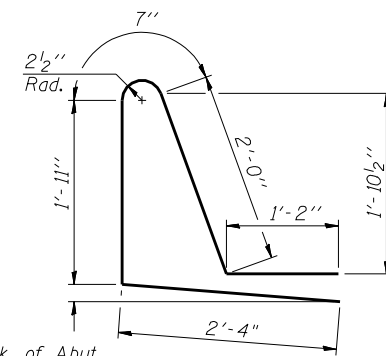
#4 Bars- 2'-7"  
 #8 Bars- 6'-9"



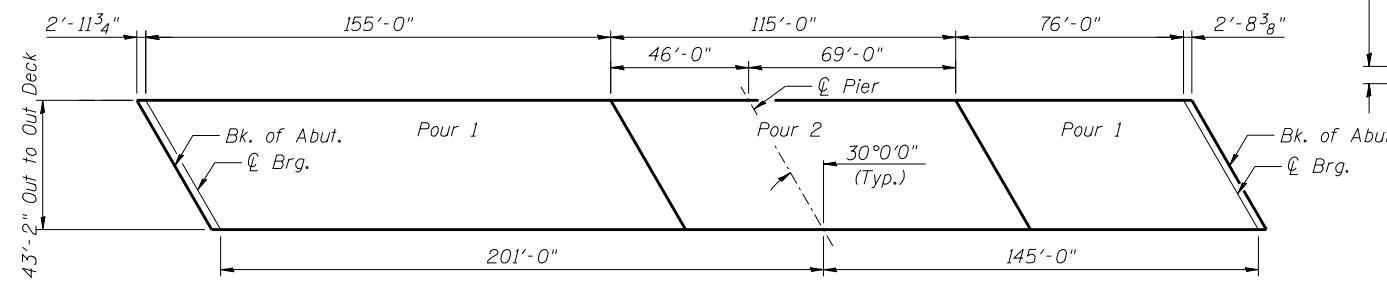
**PARAPET JOINT DETAILS**



**BAR d(E)**



**BAR d1(E)**



**EASTBOUND PLAN-DECK POURING SEQUENCE**

**EASTBOUND SUPERSTRUCTURE BILL OF MATERIAL**

Bar	No.	Size	Length	Shape
a(E)	838	#5	42'-6"	—
a1(E)	525	#5	42'-2"	—
a2(E)	1,674	#6	6'-6"	—
a3(E)	8	#5	1'-6"	—
b(E)	644	#5	27'-6"	—
b1(E)	180	#6	32'-5"	—
b2(E)	646	#5	23'-0"	—
d(E)	764	#5	5'-7"	⌒
d1(E)	764	#5	8'-0"	⌒
e(E)	140	#4	18'-0"	—
e1(E)	16	#8	28'-9"	—
e2(E)	16	#4	25'-2"	—
e3(E)	32	#4	19'-8"	—
e4(E)	4	#8	19'-8"	—
e5(E)	98	#4	17'-10"	—
e6(E)	12	#8	26'-9"	—
e7(E)	12	#4	23'-3"	—
m(E)	78	#6	19'-1"	—
m1(E)	8	#6	3'-4"	—
m2(E)	16	#6	10'-2"	—
s6(E)	40	#5	15'-11"	⌒
s7(E)	44	#5	12'-7"	⌒
s8(E)	40	#5	15'-8"	⌒
s9(E)	44	#5	12'-5"	⌒
u2(E)	88	#4	6'-10"	⌒
Reinforcement Bars, Epoxy Coated		Pound	141,560	
Concrete Superstructure		Cu. Yds.	542.8	

Bars indicated thus 1 x 6-#5 etc. indicates 1 line of bars with 6 lengths per line.

**NOTES:**

When the deck pour is stopped for the day, at one or more of the transverse Bonded Construction Joints in the deck Pouring Sequence as shown, the next pour shall not be made until both of the following requirements are met:

1. At least 72 hours shall have elapsed from the end of the previous pour.
2. The concrete strength shall have attained a minimum flexural strength of 650 psi or a minimum compressive strength of 3500 psi.

FILE NAME = 0820117-0118-76884-023-EBP-ops.dgn



USER NAME = brazzano	DESIGNED - RAB	REVISED -
PLOT SCALE = 0x2.0000 '1' / IN.	CHECKED - BTO	REVISED -
PLOT DATE = 12/02/2011	DRAWN - RAB	REVISED -
	CHECKED - JAN	REVISED -

**STATE OF ILLINOIS  
 DEPARTMENT OF TRANSPORTATION**

**PARAPET ELEVATION, DETAILS & B.O.M., EASTBOUND  
 STRUCTURE NO. 082-0117 (E.B.) & 082-0118 (W.B.)**

SHEET NO. S-23 OF S-62 SHEETS

F.A.P. RTE. 103	SECTION 27-1-VHB-1	COUNTY ST. CLAIR	TOTAL SHEETS 277	SHEET NO. 138
CONTRACT NO. 76884				
ILLINOIS FED. AID PROJECT				