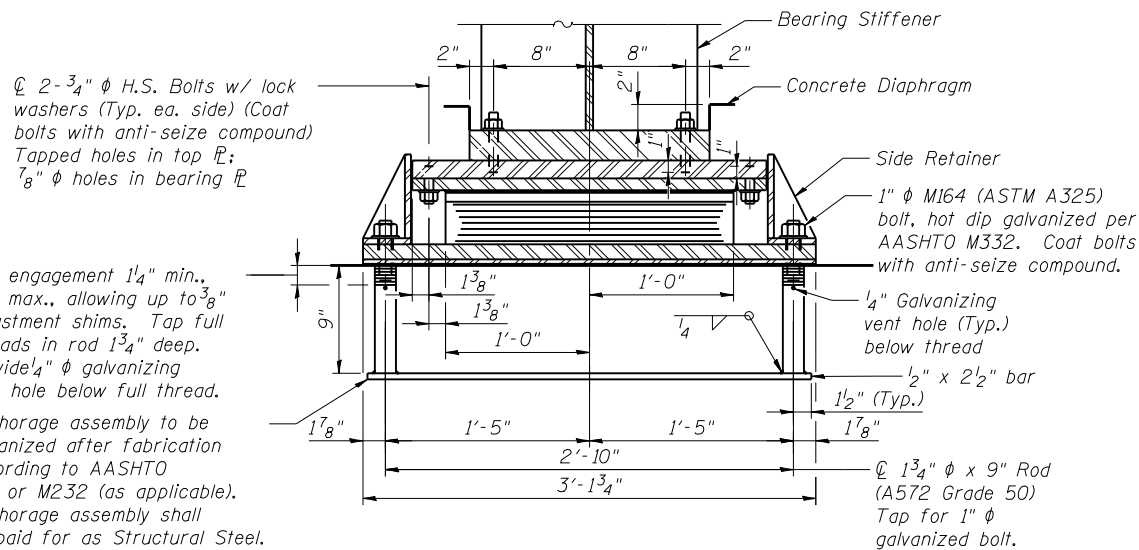
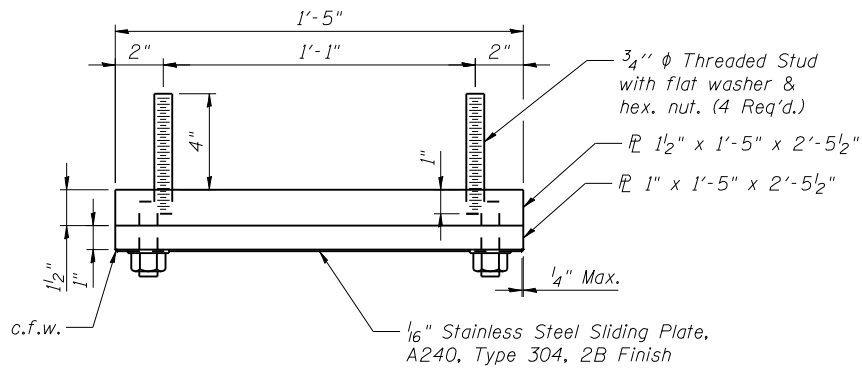


**ELEVATION AT WEST ABUT.**

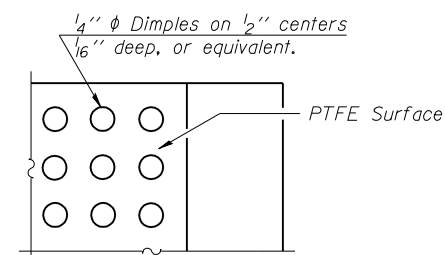


**SECTION A-A**

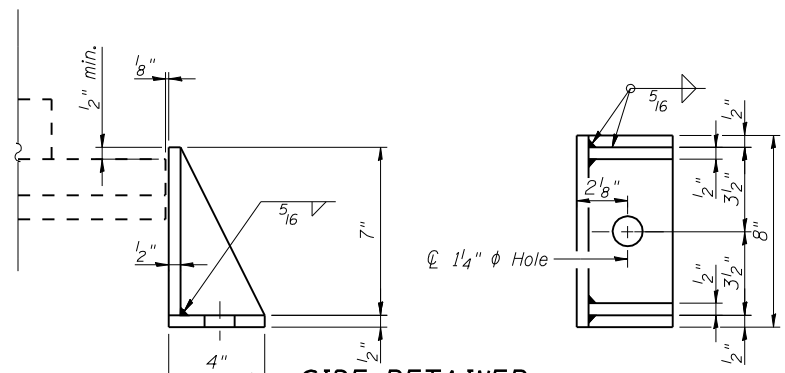
**TYPE II ELASTOMERIC EXP. BRG.**



**TOP BEARING ASSEMBLY**

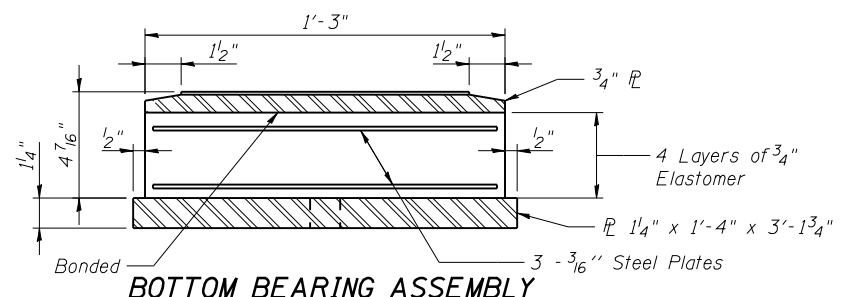


**PLAN-PTFE SURFACE**

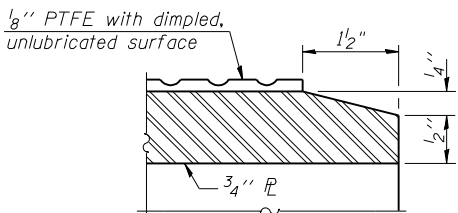


**SIDE RETAINER**

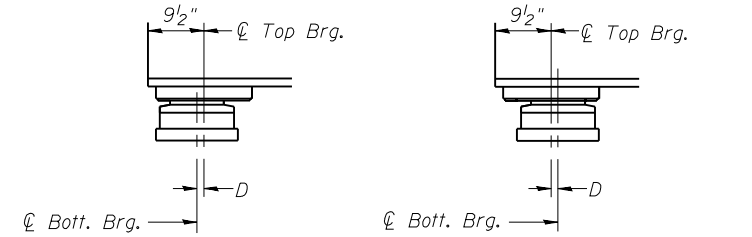
Equivalent rolled angle with stiffeners will be allowed in lieu of welded plates.



**BOTTOM BEARING ASSEMBLY**



**SECTION THRU PTFE**



**SETTING ANCHOR BOLTS AT EXP. BRG.**

BELOW 50°F. (Move bott. brg. away from fixed brg.) ABOVE 50°F. (Move bott. brg. toward fixed brg.)

D = 1/8" per each 100' of expansion for every 15° temp. change from the normal temp. of 50°F.

Notes:  
Anchor bolts shall be ASTM F1554 all-thread (or an Engineer-approved alternate material) of the grade(s) and diameter(s) specified. ASTM A307 Grade C anchor bolts may be used in lieu of ASTM F1554 Grade 36 (Fy=36ksi). The corresponding specified grade of AASHTO M314 anchor bolts may be used in lieu of ASTM F1554.

Side retainers and other steel members required for the elastomeric bearing assembly shall be included in the cost of Elastomeric Bearing Assembly, Type II.

The 1/8" PTFE sheet shall be bonded directly to the top steel plate with a two-component, medium viscosity epoxy resin, conforming to the requirements of the Federal Specification MMM-A-134, Type II. The bond agent shall be applied on the full area of the contact surfaces.

Bonding of 1/8" PTFE sheet during vulcanizing process will be permitted provided the process and method of adjusting assembly height is approved by the Engineer.

Steel for bearing plates shall be ASTM 572 Grade 50 (Fy=50 ksi)

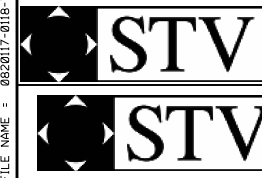
The anchor bolt sizes and grades shown constitute a calculated seismic structural fuse. Substitution of higher diameter and/or grade anchor bolts will not be allowed.

**BILL OF MATERIAL**

(For each structure)

Item	Unit	Total
Elastomeric Bearing Assembly Type II	Each	5
Anchor Bolts, 1" φ	Each	10

FILE NAME = 0820117-0118-76884-039-BearingDetailsTypeII.dgn



USER NAME = brozzaro	DESIGNED - RAB	REVISED -
PLOT SCALE = 0x2.0000 '1' / IN.	CHECKED - BTO	REVISED -
PLOT DATE = 10/19/2011	DRAWN - RAB	REVISED -
	CHECKED - JAN	REVISED -

**STATE OF ILLINOIS  
DEPARTMENT OF TRANSPORTATION**

**BEARING DETAILS, TYPE II ELASTOMERIC  
STRUCTURE NO. 082-0117 (E.B.) & 082-0118 (W.B.)**

F.A.P. RTE.	SECTION	COUNTY	TOTAL SHEETS	SHEET NO.
103	27-1-VHB-1	ST. CLAIR	277	154
CONTRACT NO. 76884				
ILLINOIS FED. AID PROJECT				

SHEET NO. S-39 OF S-62 SHEETS