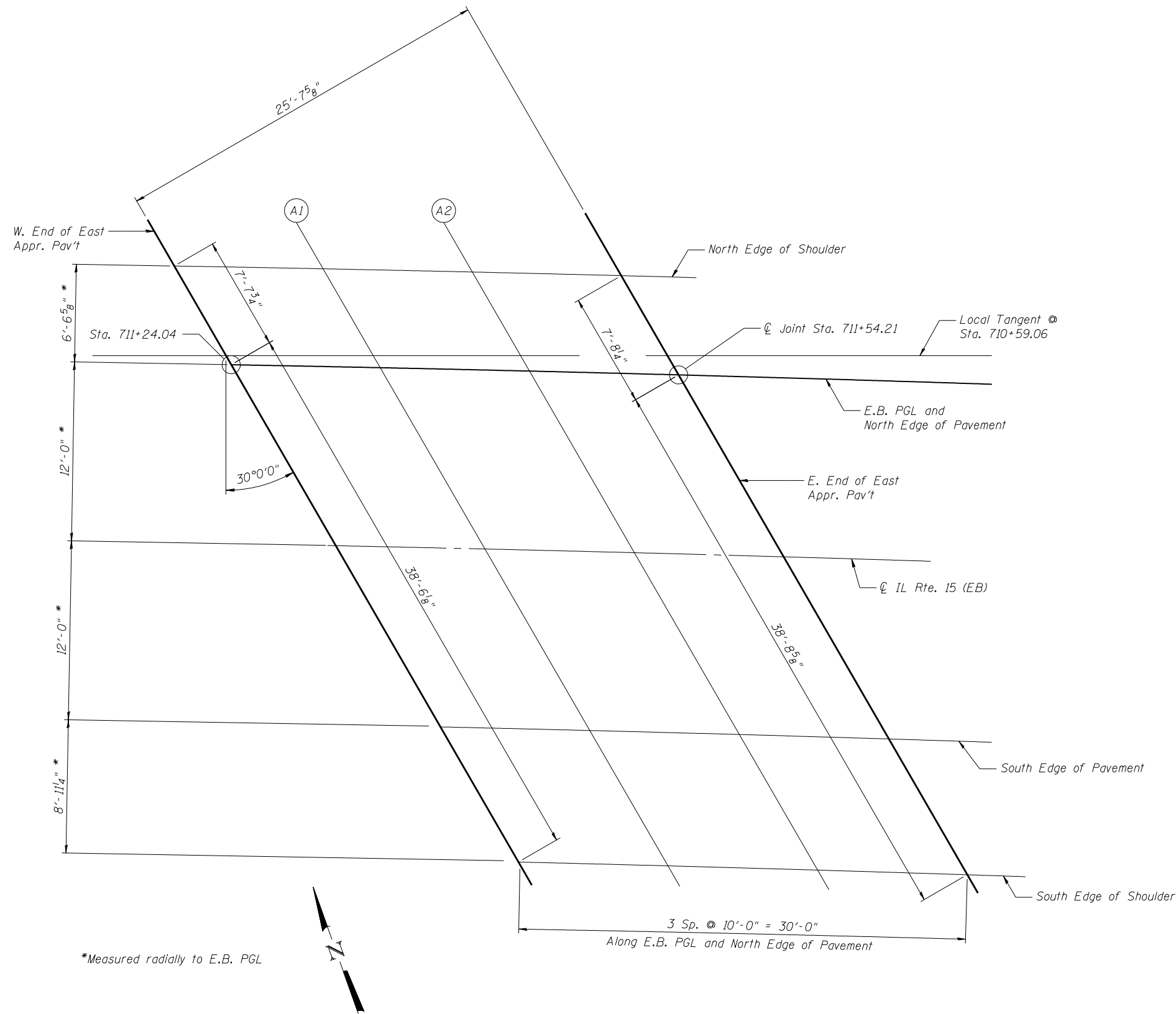


FILE NAME = 082011r-0120-76884-010-EastAppr-ElevEB.dgn



\*Measured radially to E.B. PGL

**PLAN**  
(East Approach E.B.)

**NORTH EDGE OF SHOULDER**

Location	Station	Offset	Theoretical Grade Elevations
W. End East Appr. Pav't	711+20.08	13.45	490.73
A1	711+30.11	13.45	490.45
A2	711+40.14	13.45	490.17
E. End East Appr. Pav't	711+50.17	13.45	489.88

**E.B. PGL AND NORTH EDGE OF PAVEMENT**

Location	Station	Offset	Theoretical Grade Elevations
W. End East Appr. Pav't	711+24.04	20.00	490.36
A1	711+34.09	20.00	490.08
A2	711+44.15	20.00	489.80
E. End East Appr. Pav't	711+54.21	20.00	489.50

**IL RTE. 15 (EB)**

Location	Station	Offset	Theoretical Grade Elevations
W. End East Appr. Pav't	711+31.33	32.00	489.69
A1	711+41.44	32.00	489.41
A2	711+51.54	32.00	489.11
E. End East Appr. Pav't	711+61.65	32.00	488.82

**SOUTH EDGE OF PAVEMENT**

Location	Station	Offset	Theoretical Grade Elevations
W. End East Appr. Pav't	711+38.69	44.00	489.02
A1	711+48.84	44.00	488.73
A2	711+58.99	44.00	488.43
E. End East Appr. Pav't	711+69.14	44.00	488.12

**SOUTH EDGE OF SHOULDER**

Location	Station	Offset	Theoretical Grade Elevations
W. End East Appr. Pav't	711+44.21	52.94	488.51
A1	711+54.39	52.94	488.21
A2	711+64.58	52.94	487.91
E. End East Appr. Pav't	711+74.77	52.94	487.60



USER NAME = brazzera	DESIGNED - MJK	REVISED - -
	CHECKED - BTO	REVISED - -
PLOT SCALE = 8:0' / IN.	DRAWN - MJK	REVISED - -
PLOT DATE = 10/19/2011	CHECKED - BTO	REVISED - -

**STATE OF ILLINOIS**  
**DEPARTMENT OF TRANSPORTATION**

**EAST E.B. BRIDGE APPROACH SLAB ELEVATIONS**  
**STRUCTURE NO. 082-0119 (E.B.) & 082-0120 (W.B.)**

SHEET NO. 5-10 OF 5-51 SHEETS

F.A.P. RTE. 103	SECTION 27-1-VHB-1	COUNTY ST. CLAIR	TOTAL SHEETS 277	SHEET NO. 187
CONTRACT NO. 76884			ILLINOIS FED. AID PROJECT	