

**NORTH EDGE OF SHOULDER**

| Location                | Station   | Offset | Theoretical Grade Elevations |
|-------------------------|-----------|--------|------------------------------|
| W. End West Appr. Pav't | 709+60.98 | 13.35  | 494.32                       |
| A3                      | 709+71.01 | 13.35  | 494.14                       |
| A4                      | 709+81.05 | 13.35  | 493.95                       |
| E. End West Appr. Pav't | 709+91.07 | 13.35  | 493.75                       |

**E.B. PGL AND NORTH EDGE OF PAVEMENT**

| Location                | Station   | Offset | Theoretical Grade Elevations |
|-------------------------|-----------|--------|------------------------------|
| W. End West Appr. Pav't | 709+64.60 | 20.00  | 493.99                       |
| A3                      | 709+74.66 | 20.00  | 493.81                       |
| A4                      | 709+84.72 | 20.00  | 493.62                       |
| E. End West Appr. Pav't | 709+94.77 | 20.00  | 493.42                       |

**CL IL RTE. 15 (EB)**

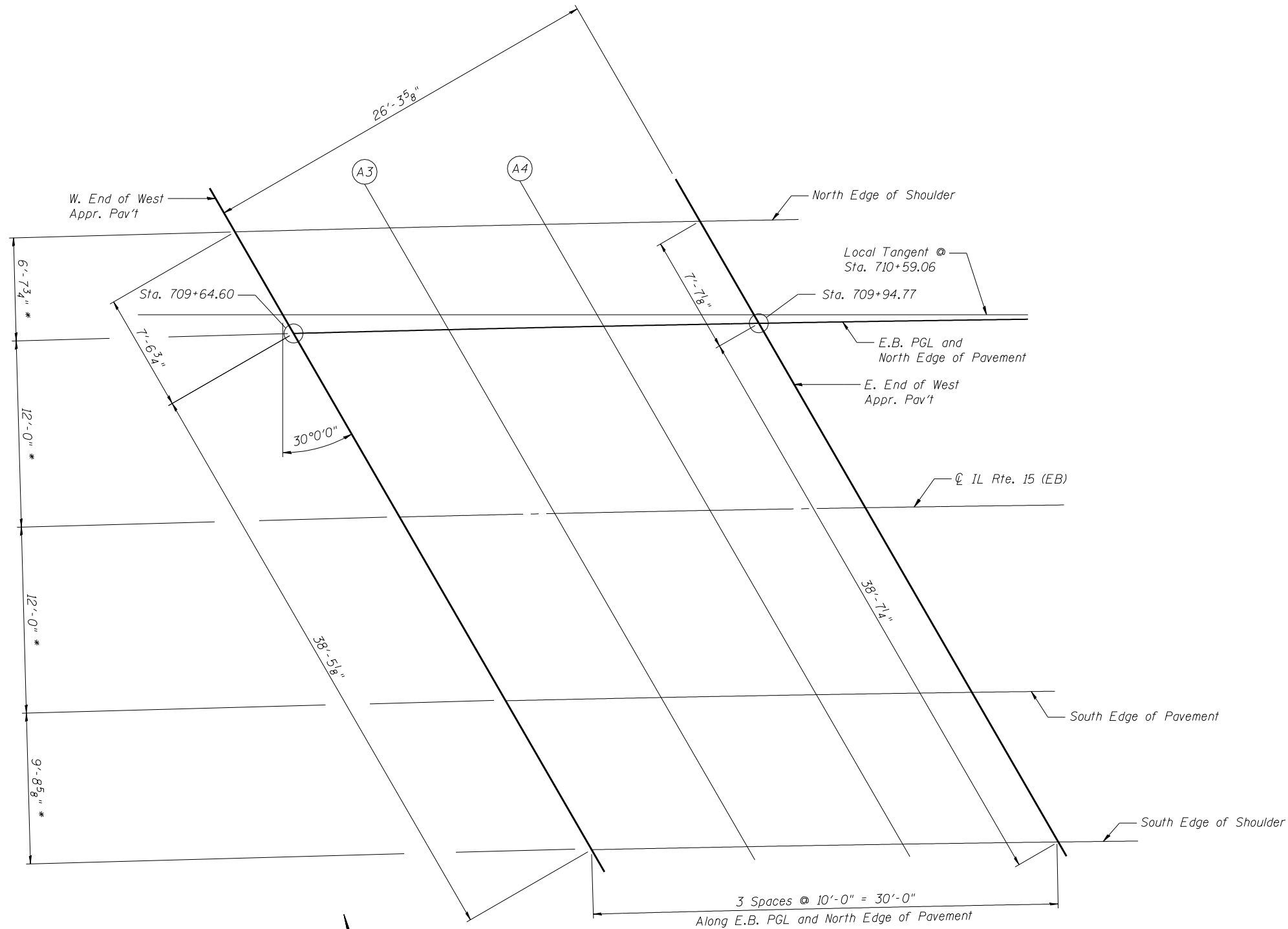
| Location                | Station   | Offset | Theoretical Grade Elevations |
|-------------------------|-----------|--------|------------------------------|
| W. End West Appr. Pav't | 709+71.18 | 32.00  | 493.41                       |
| A3                      | 709+81.28 | 32.00  | 493.22                       |
| A4                      | 709+91.38 | 32.00  | 493.02                       |
| E. End West Appr. Pav't | 710+01.48 | 32.00  | 492.82                       |

**SOUTH EDGE OF PAVEMENT**

| Location                | Station   | Offset | Theoretical Grade Elevations |
|-------------------------|-----------|--------|------------------------------|
| W. End West Appr. Pav't | 709+77.81 | 44.00  | 492.81                       |
| A3                      | 709+87.96 | 44.00  | 492.62                       |
| A4                      | 709+98.10 | 44.00  | 492.42                       |
| E. End West Appr. Pav't | 710+08.25 | 44.00  | 492.21                       |

**SOUTH EDGE OF SHOULDER**

| Location                | Station   | Offset | Theoretical Grade Elevations |
|-------------------------|-----------|--------|------------------------------|
| W. End West Appr. Pav't | 709+83.22 | 53.72  | 492.33                       |
| A3                      | 709+93.41 | 53.72  | 492.13                       |
| A4                      | 710+03.59 | 53.72  | 491.93                       |
| E. End West Appr. Pav't | 710+13.77 | 53.72  | 491.72                       |



\*Measured radially to E.B. PGL



**PLAN**  
(West Approach E.B.)

FILE NAME = 0820119-0120-76884-011-WestAppr-ElvEB.dgn



|                          |                |             |
|--------------------------|----------------|-------------|
| USER NAME = brozzano     | DESIGNED - MJK | REVISED - - |
| PLOT SCALE = 8.00' / IN. | CHECKED - BTO  | REVISED - - |
| PLOT DATE = 10/19/2011   | DRAWN - MJK    | REVISED - - |
|                          | CHECKED - BTO  | REVISED - - |

**STATE OF ILLINOIS**  
**DEPARTMENT OF TRANSPORTATION**

**WEST E.B. BRIDGE APPROACH SLAB ELEVATIONS**  
**STRUCTURE NO. 082-0119 (E.B.) & 082-0120 (W.B.)**

SHEET NO. S-11 OF S-51 SHEETS

|                           |            |           |              |           |
|---------------------------|------------|-----------|--------------|-----------|
| F.A.P. RTE.               | SECTION    | COUNTY    | TOTAL SHEETS | SHEET NO. |
| 103                       | 27-1-VHB-1 | ST. CLAIR | 277          | 188       |
| CONTRACT NO. 76884        |            |           |              |           |
| ILLINOIS FED. AID PROJECT |            |           |              |           |