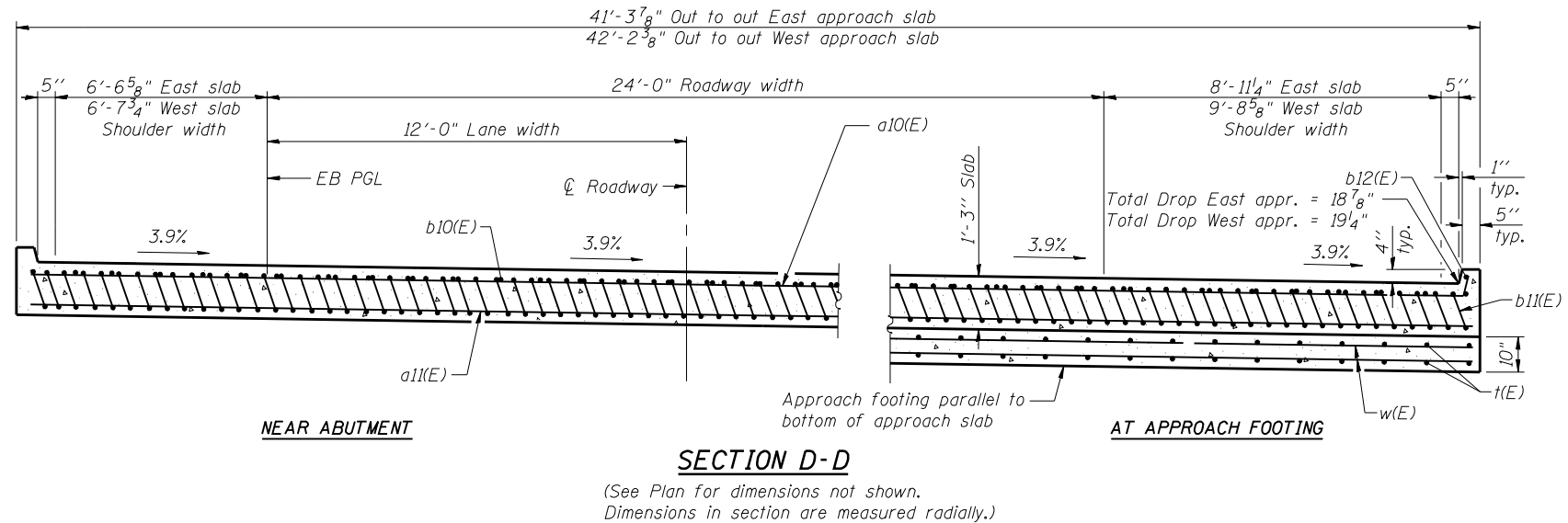
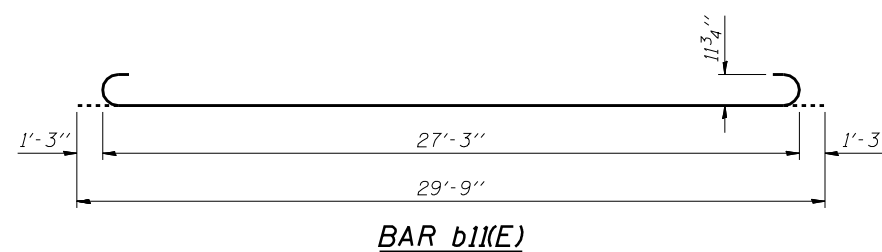
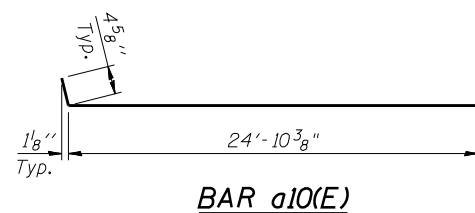
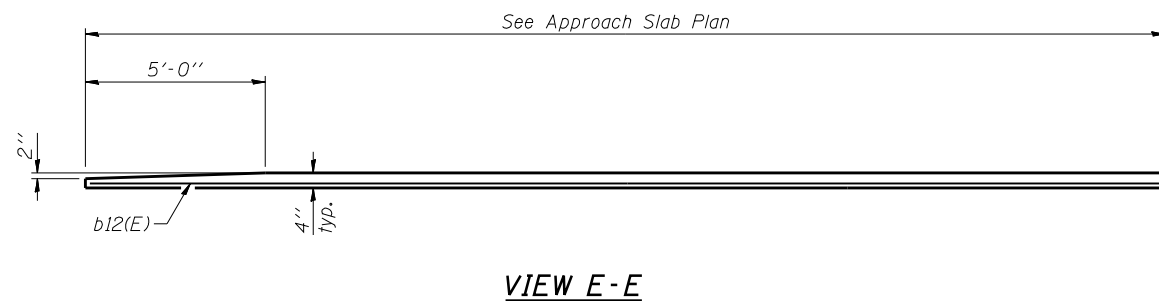


Notes:  
 See sheet S-22 and S-23 of S-51 for Detail A and View B-B.  
 Approach slab and parapet concrete shall be paid for as Concrete Superstructure.  
 Approach footing concrete shall be paid for as Concrete Structures.  
 Reinforcement shall be paid for as Reinforcement Bars, Epoxy Coated.  
 For v(E) bar details, see sheet S-20 of S-51.  
 The approach footing maximum applied service bearing pressure (Q<sub>max</sub>) = 2.0 ksf.  
 For bar splicer details, see sheet S-39 of S-51.  
 Cost of excavation for approach footing included with Concrete Structures.  
 For Select Backfill and drainage treatment details, see sheet S-2 of S-51.  
 For additional parapet details, see sheet S-20 of S-51.



\* Tilt #9 b11(E) bars as required to maintain clearance.  
 \*\*\* Cost included with Concrete Superstructure.



**TWO APPROACHES  
 BILL OF MATERIAL**

Bar	No.	Size	Length	Shape
a10(E)	100	#4	25'-3"	U
a11(E)	184	#5	25'-5"	U
b10(E)	70	#4	29'-6"	U
b11(E)	202	#9	29'-9"	U
b12(E)	4	#4	28'-7"	U
t(E)	172	#4	11'-3"	U
w(E)	160	#5	25'-5"	U
Concrete Superstructure		Cu. Yd.	117.3	
Concrete Structures		Cu. Yd.	29.8	
Reinforcement Bars, Epoxy Coated		Pound	34,000	

FILE NAME = 0820119-0120-76884-024-EBApp-Details.dgn



USER NAME = brazzera	DESIGNED - MJK	REVISED -
	CHECKED - BTO	REVISED -
PLOT SCALE = 0x2.0000 '1' / IN.	DRAWN - MJK	REVISED -
PLOT DATE = 10/19/2011	CHECKED - BTO	REVISED -

**STATE OF ILLINOIS  
 DEPARTMENT OF TRANSPORTATION**

**EASTBOUND BRIDGE APPROACH SLAB DETAILS  
 STRUCTURE NO. 082-0119 (E.B.) & 082-0120 (W.B.)**

SHEET NO. S-24 OF S-51 SHEETS

F.A.P. RTE.	SECTION	COUNTY	TOTAL SHEETS	SHEET NO.
103	27-1-VHB-1	ST. CLAIR	277	201
CONTRACT NO. 76884			ILLINOIS FED. AID PROJECT	