

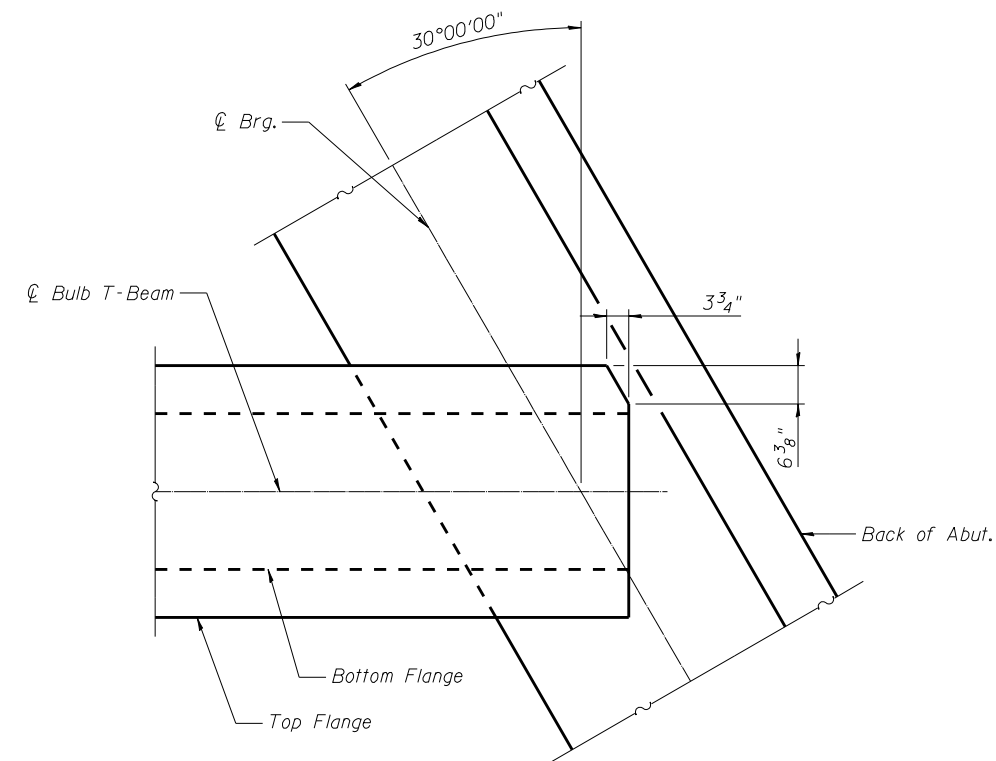
72" BULB T-BEAM FRAMING PLAN-WB

INTERIOR BEAM MOMENT TABLE		
		0.5 Span
I	(in^4)	545894
I'	(in^4)	929607
S_b	(in^3)	14915
S_b'	(in^3)	18882
S_t	(in^3)	15421
S_t'	(in^3)	40832
$DC1$	(k/ft)	1.4
M_{DC1}	(k)	2730
$DC2$	(k/ft)	0.11
M_{DC2}	(k)	220
DW	(k/ft)	0.27
M_{DW}	(k)	521
$M_{\xi} + IM$	(k)	2194

INTERIOR BEAM REACTION TABLE		
		Abut.
R_{DC1}	(k)	87.5
R_{DC2}	(k)	6.9
R_{DW}	(k)	16.9
$R_{\xi} + IM$	(k)	88.3
R_{Total}	(k)	199.6

I : Non-composite moment of inertia of beam section (in^4).
 I' : Composite moment of inertia of beam section (in^4).
 S_b : Non-composite section modulus for the bottom fiber of the prestressed beam (in^3).
 S_b' : Composite section modulus for the bottom fiber of the prestressed beam (in^3).
 S_t : Non-composite section modulus for the top fiber of the prestressed beam (in^3).
 S_t' : Composite section modulus for the top fiber of the prestressed beam (in^3).
 $DC1$: Un-factored non-composite dead load (kips/ft.).
 M_{DC1} : Un-factored moment due to non-composite dead load (kip-ft.).
 $DC2$: Un-factored long-term composite (superimposed excluding future wearing surface) dead load (kips/ft.).
 M_{DC2} : Un-factored moment due to long-term composite (superimposed excluding future wearing surface) dead load (kip-ft.).
 DW : Un-factored long-term composite (superimposed future wearing surface only) dead load (kips/ft.).
 M_{DW} : Un-factored moment due to long-term composite (superimposed future wearing surface only) dead load (kip-ft.).
 $M_{\xi} + IM$: Un-factored live load moment plus dynamic load allowance (impact) (kip-ft.).

NOTE: See Sht. S-31 for Permanent Bracing Details



DETAIL 1

FILE NAME = 0820119-0120-76884-029-FramingWB.dgn



USER NAME = brazzera	DESIGNED - MJK	REVISED -
PLOT SCALE = 1/8" = 1'-0"	CHECKED - JAN	REVISED -
PLOT DATE = 10/19/2011	DRAWN - MJK	REVISED -
	CHECKED - JAN	REVISED -

**STATE OF ILLINOIS
DEPARTMENT OF TRANSPORTATION**

**FRAMING PLAN, MOMENT AND REACTION TABLE WESTBOUND
STRUCTURE NO. 082-0119 (E.B.) & 082-0120 (W.B.)**

SHEET NO. S-29 OF S-51 SHEETS

F.A.P. RTE.	SECTION	COUNTY	TOTAL SHEETS	SHEET NO.
103	27-1-VHB-1	ST. CLAIR	277	206
CONTRACT NO. 76884			ILLINOIS FED. AID PROJECT	