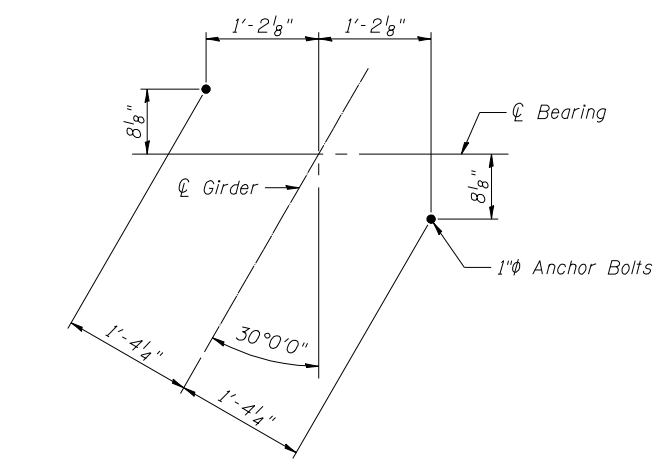
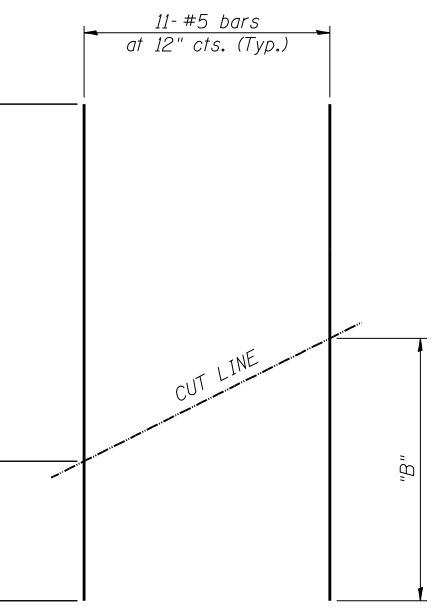
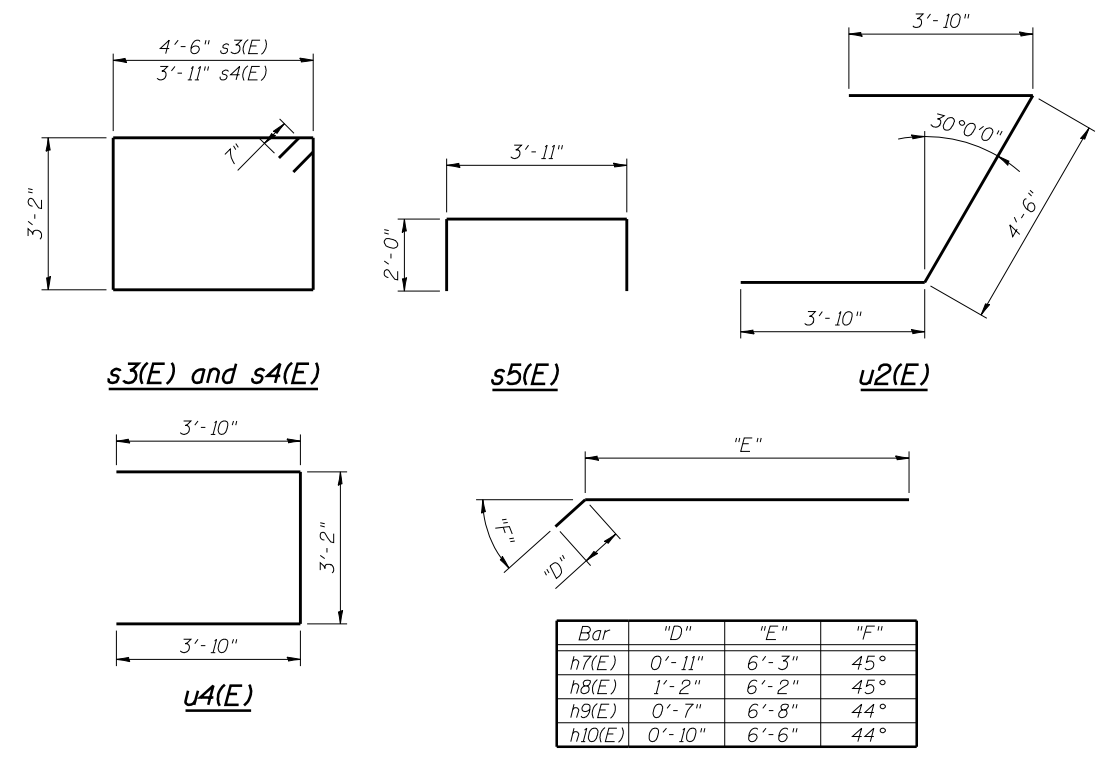


SECTION THRU WEST ABUT.



ANCHOR BOLT LAYOUT WEST ABUTMENT



Bar	"A"	"B"	"C"
v4(E)	6'-0"	10'-7"	16'-7"
v6(E)	8'-3"	10'-6"	18'-9"

FIELD CUTTING DIAGRAM

Order v4(E) and v6(E) full length.
Cut as shown and use remainder of bars in opposite face.

WEST ABUTMENT EASTBOUND
BILL OF MATERIAL

Bar	No.	Size	Length	Shape
h1(E)	7	#8	17'-6"	—
h2(E)	5	#5	13'-1"	—
h4(E)	16	#5	10'-9"	—
h7(E)	13	#5	7'-2"	—
h8(E)	13	#5	7'-4"	—
p2(E)	4	#5	14'-9"	—
p8(E)	16	#7	19'-0"	—
p9(E)	8	#5	17'-5"	—
p10(E)	4	#7	26'-10"	—
p11(E)	4	#5	23'-7"	—
p12(E)	8	#5	8'-9"	—
p13(E)	8	#7	16'-6"	—
s3(E)	2	#5	16'-6"	□
s4(E)	55	#5	15'-4"	□
s5(E)	43	#5	7'-11"	┌
u2(E)	8	#6	12'-2"	└
u3(E)	4	#7	12'-8"	└
u4(E)	5	#6	10'-10"	└
v4(E)	11	#5	16'-7"	—
v5(E)	18	#5	11'-6"	—
Concrete Structures		Cu. Yd.	39.1	
Reinforcement Bars, Epoxy Coated		Pound	4270	
Furnishing Steel Piles HP12x53		Foot	744	
Driving Piles		Foot	744	
Test Pile Steel HP12x53		Each	1	

WEST ABUTMENT WESTBOUND
BILL OF MATERIAL

Bar	No.	Size	Length	Shape
h(E)	16	#5	10'-0"	—
h1(E)	7	#8	17'-6"	—
h2(E)	5	#5	13'-1"	—
h9(E)	13	#5	7'-3"	—
h10(E)	13	#5	7'-4"	—
p2(E)	4	#5	14'-9"	—
p8(E)	16	#7	19'-0"	—
p9(E)	8	#5	17'-5"	—
p10(E)	4	#7	26'-10"	—
p11(E)	4	#5	23'-7"	—
p12(E)	8	#5	8'-9"	—
p13(E)	8	#7	16'-6"	—
s3(E)	2	#5	16'-6"	□
s4(E)	55	#5	15'-4"	□
s5(E)	43	#5	7'-11"	┌
u2(E)	8	#6	12'-2"	└
u4(E)	5	#6	10'-10"	└
u5(E)	4	#7	12'-6"	└
v6(E)	11	#5	18'-9"	—
v7(E)	18	#5	11'-5"	—
Concrete Structures		Cu. Yd.	39.2	
Reinforcement Bars, Epoxy Coated		Pound	4280	
Furnishing Steel Piles HP12x53		Foot	780	
Driving Piles		Foot	780	
Test Pile Steel HP12x53		Each	1	

For details of piles see sheet S-40 of S-51.

FILE NAME = 0820119-0120-76884-038-WestAbut-Details.dgn



USER NAME = brazzera	DESIGNED - MJK	REVISED - -
PLOT SCALE = 2x.0000 '1' / IN.	CHECKED - SAB	REVISED - -
PLOT DATE = 10/19/2011	DRAWN - MJK	REVISED - -
	CHECKED - SAB	REVISED - -

STATE OF ILLINOIS
DEPARTMENT OF TRANSPORTATION

WEST ABUTMENT DETAILS
STRUCTURE NO. 082-0119 (E.B.) & 082-0120 (W.B.)

SHEET NO. S-38 OF S-51 SHEETS

F.A.P. RTE.	SECTION	COUNTY	TOTAL SHEETS	SHEET NO.
103	27-1-VHB-1	ST. CLAIR	277	215
CONTRACT NO. 76884			ILLINOIS FED. AID PROJECT	