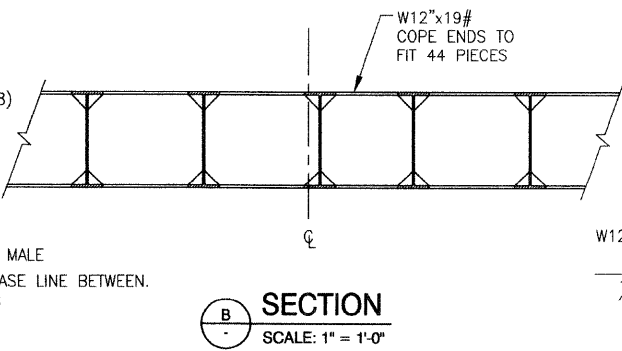
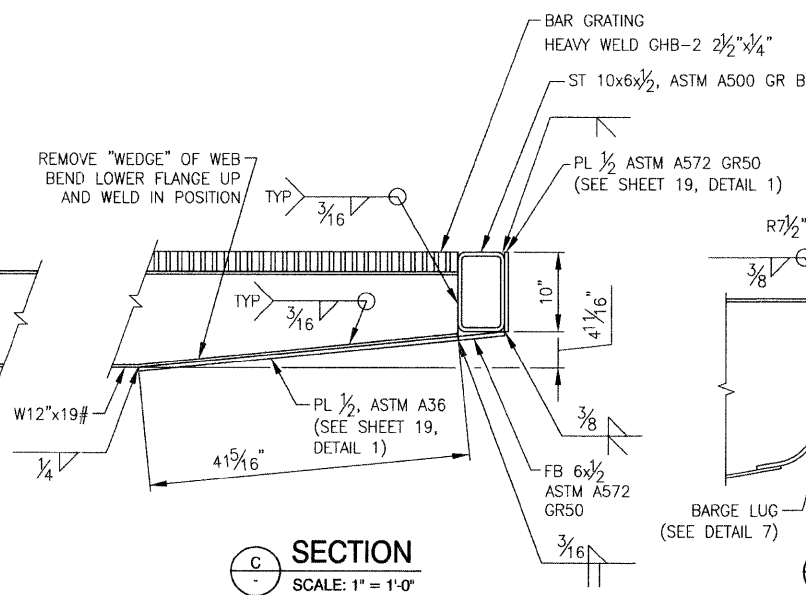


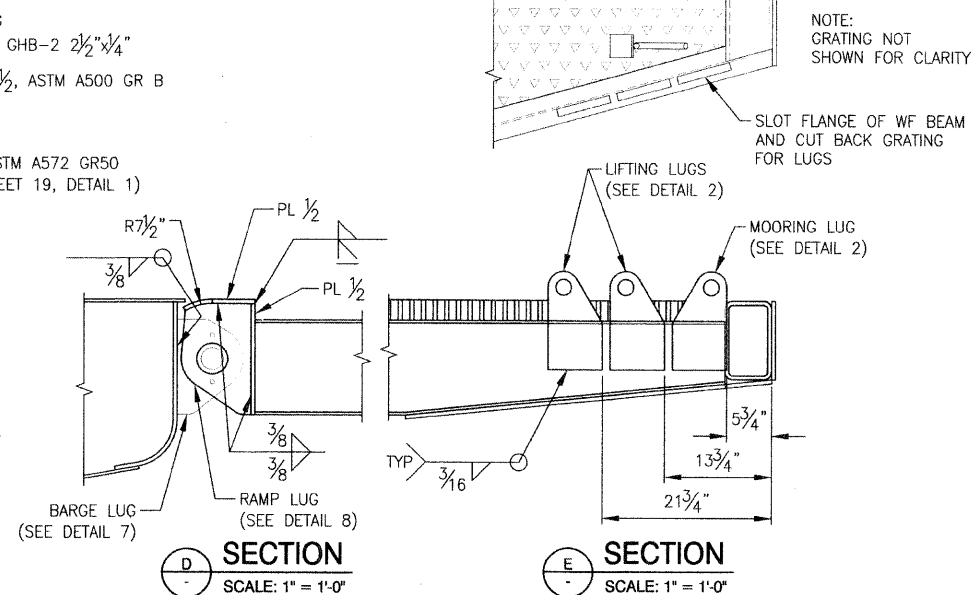
**SECTION A**  
SCALE: 1" = 1'-0"



**SECTION B**  
SCALE: 1" = 1'-0"



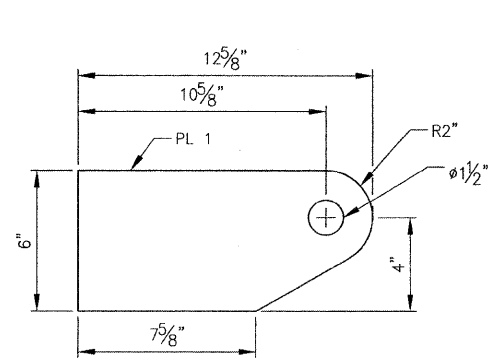
**SECTION C**  
SCALE: 1" = 1'-0"



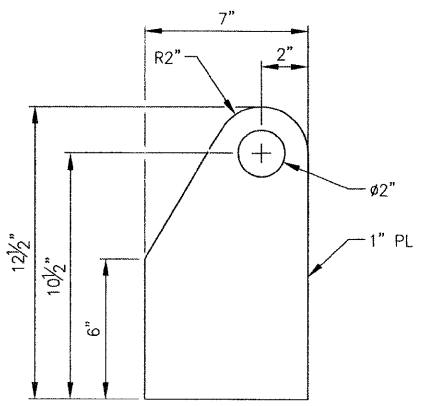
**SECTION D**  
SCALE: 1" = 1'-0"

**SECTION E**  
SCALE: 1" = 1'-0"

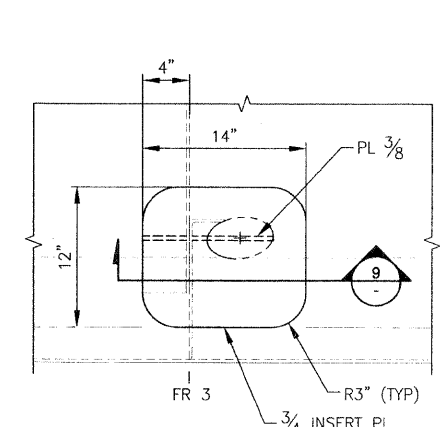
NOTE:  
GRATING NOT  
SHOWN FOR CLARITY



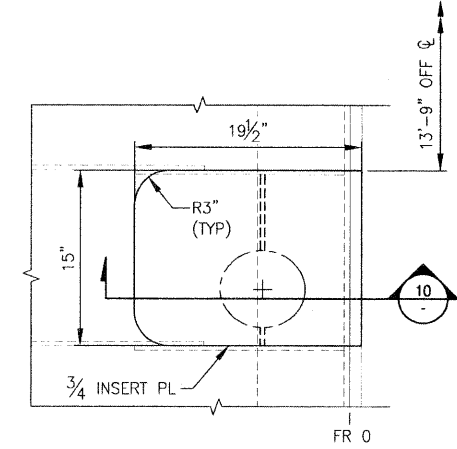
**DETAIL 1**  
CHAIN LUG  
(8) REQUIRED  
SCALE: 3" = 1'-0"



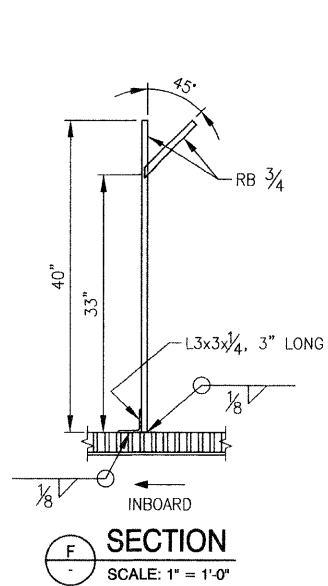
**DETAIL 2**  
MOORING / LIFTING LUG  
(12) REQUIRED  
SCALE: 1 1/2" = 1'-0"



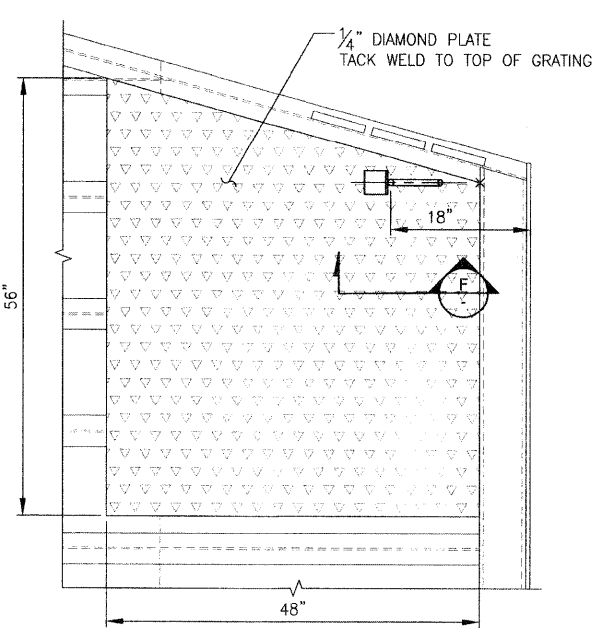
**DETAIL 3**  
SCALE: 1 1/2" = 1'-0"



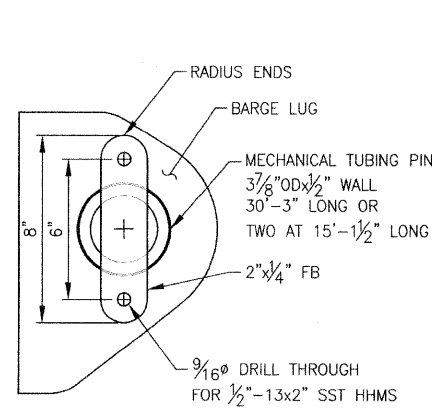
**DETAIL 4**  
SCALE: 1 1/2" = 1'-0"



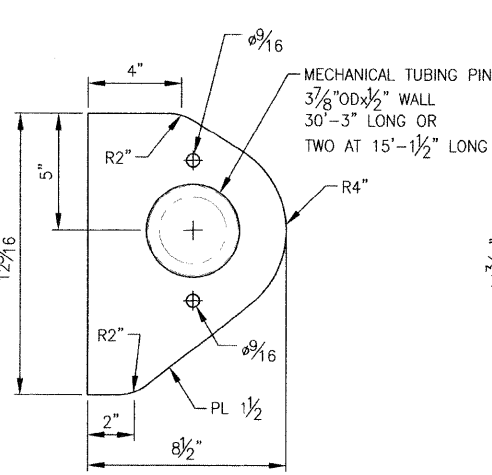
**SECTION F**  
SCALE: 1" = 1'-0"



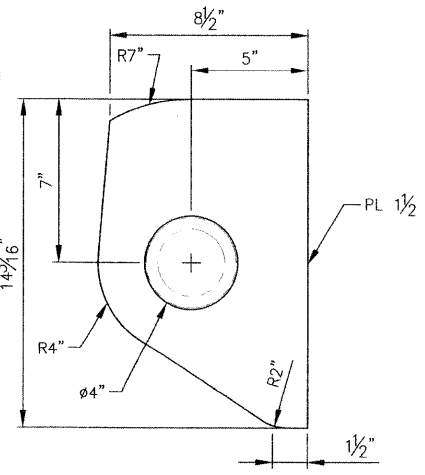
**DETAIL 5**  
PORT SHOWN, STBD SIM TO OPP HAND  
SCALE: 1" = 1'-0"



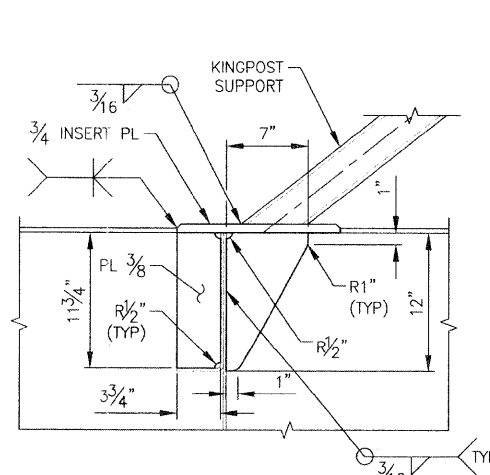
**DETAIL 6**  
SCALE: 3" = 1'-0"



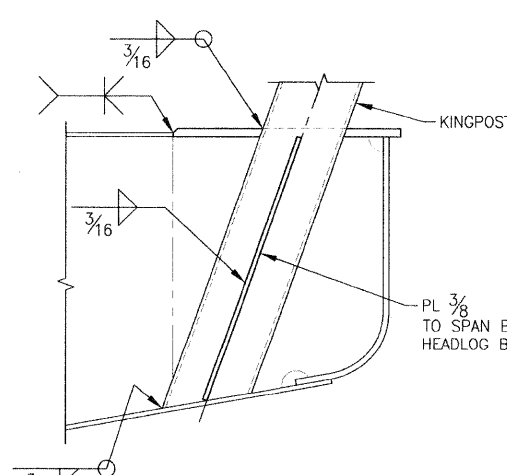
**DETAIL 7**  
SCALE: 3" = 1'-0"



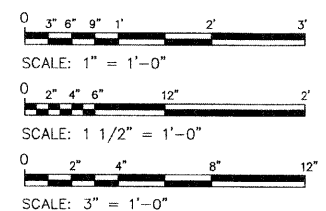
**DETAIL 8**  
SCALE: 1 1/2" = 1'-0"



**SECTION 9**  
SCALE: 1 1/2" = 1'-0"



**SECTION 10**  
SCALE: 1 1/2" = 1'-0"



PROFESSIONAL  
ORIGINAL  
REV -  
APPROVED BY  
ERIC D. SNYDER  
DATED  
10/04/2011  
ENGINEER

ERIC D. SNYDER  
STATE OF WASHINGTON  
REGISTERED  
PROFESSIONAL ENGINEER  
27216  
10/04/2011

ART ANDERSON  
ASSOCIATES  
202 PACIFIC AVE., BREMERTON, WA 98537  
(360) 479-5600

FILE NAME =	USER NAME =	DESIGNED -- E. SYNDER	REVISED -- REV A 07/21/2011	<b>STATE OF ILLINOIS DEPARTMENT OF TRANSPORTATION</b>	<b>IDOT BRUSSELS FERRY RAMPS AND SUSPENSION SYSTEM - DETAILS</b>		F.A.P. RTE. 304	SECTION 2I-3	COUNTY JERSEY	TOTAL SHEETS 26	SHEET NO. 20
PLOT SCALE =	CHECKED -- P. MARTIN	DRAWN -- R. MANANSALA	REVISED --		SCALE: AS SHOWN	SHEET NO. OF SHEETS	STA. TO STA.	CONTRACT NO. 76D29		DRAWING NO. CEIDT001BA-584-202	
PLOT DATE =	DATE -- 10/04/2010	CHECKED --	REVISED --		FED. ROAD DIST. NO. ILLINOIS FED. AID PROJECT						
<p style="text-align: right;">Page 22 of 87</p>											