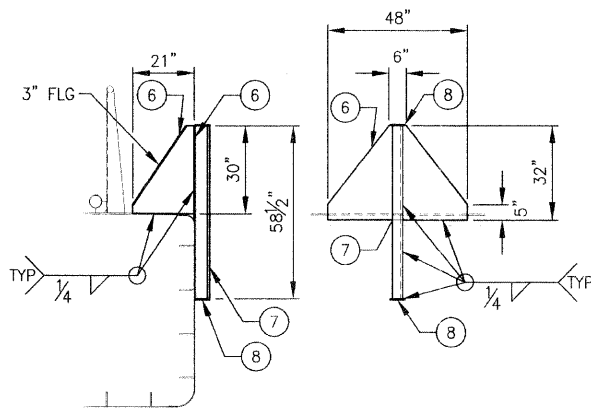
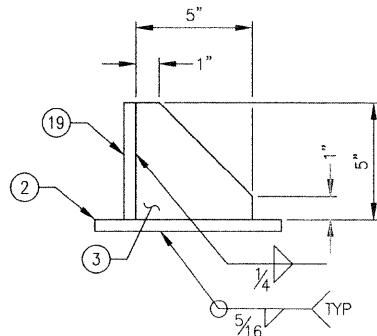


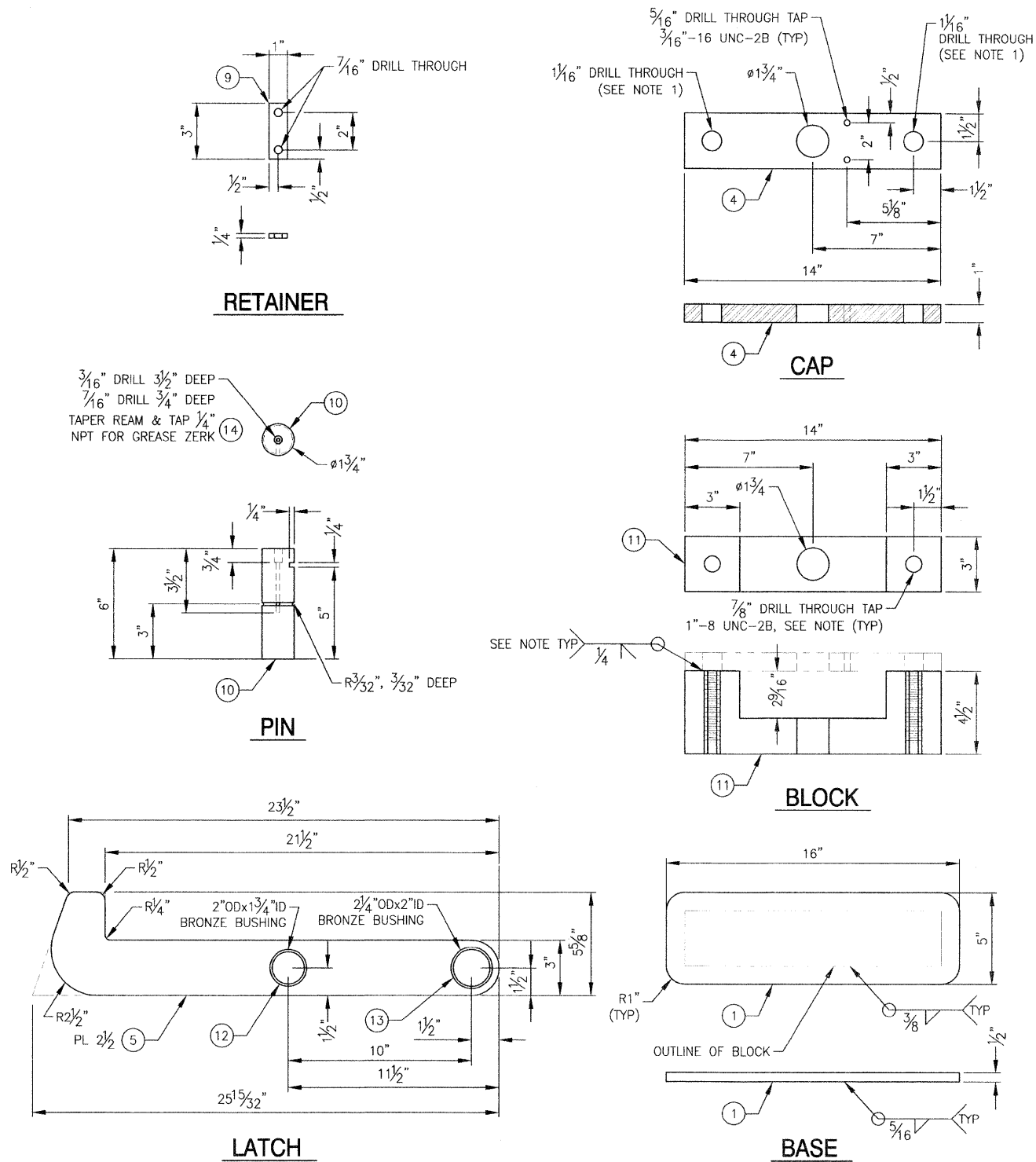
LATCH ASSEMBLY
SCALE: 1" = 1'-0"



TOWING LATCH HOOK ANGLE
SCALE: 3/8" = 1'-0"



CYLINDER FDN
SCALE: 3" = 1'-0"



LATCH AND LATCH FDN PIECES
SCALE: 3" = 1'-0"

NOTE:
1. "CAP" MAY BE WELDED TO "BLOCK"
THEREFORE BOLTS, HOLES & THREADED
HOLES MAY BE ELIMINATED

BILL OF MATERIAL			
PC NO.	QTY	DESCRIPTION	MATERIAL/SPECIFICATION/REMARKS
1	2 EA	BASE	1/2" PLATE, A-36, 5"x16"
2	2 EA	CYLINDER FDN BASE	1/2" PLATE, A-36, 8"x5"
3	2 EA	CYLINDER FDN BRACKET	1/2" PLATE, A-36, 5"x5"
4	2 EA	CAP	1" PLATE, A-36, 3"x14"
5	2 EA	LATCH	2 1/2" PLATE, A-36, 5 5/8"x24 1/2"
6	4 EA	LATCH ANGLE BRACKET WITH 3" FLG	3/8" PLATE, A-36, 48"x32" & 21"x30"
7	2 EA	LATCH ANGLE	L5x3 1/2"x3 3/4" 67 1/2" LONG, A-36
8	4 EA	FB 3/8"x5"x5" LONG	A-36
9	2 EA	RETAINER	FB 1/4"x1", A-36, 3" LONG
10	2 EA	PIN	RB 1 3/4", 1045 STEEL, 6" LONG
11	2 EA	BLOCK	4 1/2" BAR, A-36, 3"x14"
12	2 EA	BUSHING	2"ODx1 3/4"IDx2 1/2" LONG, BRONZE PRESS FIT
13	2 EA	BUSHING	2 1/4"ODx2"IDx2 1/2" LONG, BRONZE PRESS FIT
14	2 EA	GREASE ZERK	COMMERCIAL, SST, 1/4" NPT
15	2 EA	PNEUMATIC CYLINDER	PARKER HANNIFIN 4.00CBB2AU58ACX6.875
16	2 EA	CLEVIS	PARKER HANNIFIN 50947
17	2 EA	PIN	PARKER HANNIFIN 68373
18	2 EA	MOUNTING PLATE	PARKER HANNIFIN 69196
19	2 EA	CYLINDER FDN MOUNTING PLATE	1/2" PLATE, A-36, 5"x3 1/2"

FILE NAME =	USER NAME =	DESIGNED - E. SNYDER	REVISED - REV A 07/21/2011
		DRAWN - J. WALKER	REVISED -
	PLOT SCALE =	CHECKED - P. MARTIN	REVISED -
	PLOT DATE =	DATE - 10/04/2010	REVISED -

STATE OF ILLINOIS
DEPARTMENT OF TRANSPORTATION

IDOT BRUSSELS FERRY
TOW LINKAGE - LATCH

SCALE: AS SHOWN SHEET NO. OF SHEETS STA. TO STA.

F.A.P. RTE.	SECTION	COUNTY	TOTAL SHEETS	SHEET NO.
304	21-3	JERSEY	26	23
FED. ROAD DIST. NO.		ILLINOIS	FED. AID PROJECT	CONTRACT NO. 76D29

DRAWING NO. CEIDT001BA-611-203

ART ANDERSON
A S S O C I A T E S
202 PACIFIC AVE. OREGON, WA 98337
(360) 479-5500

