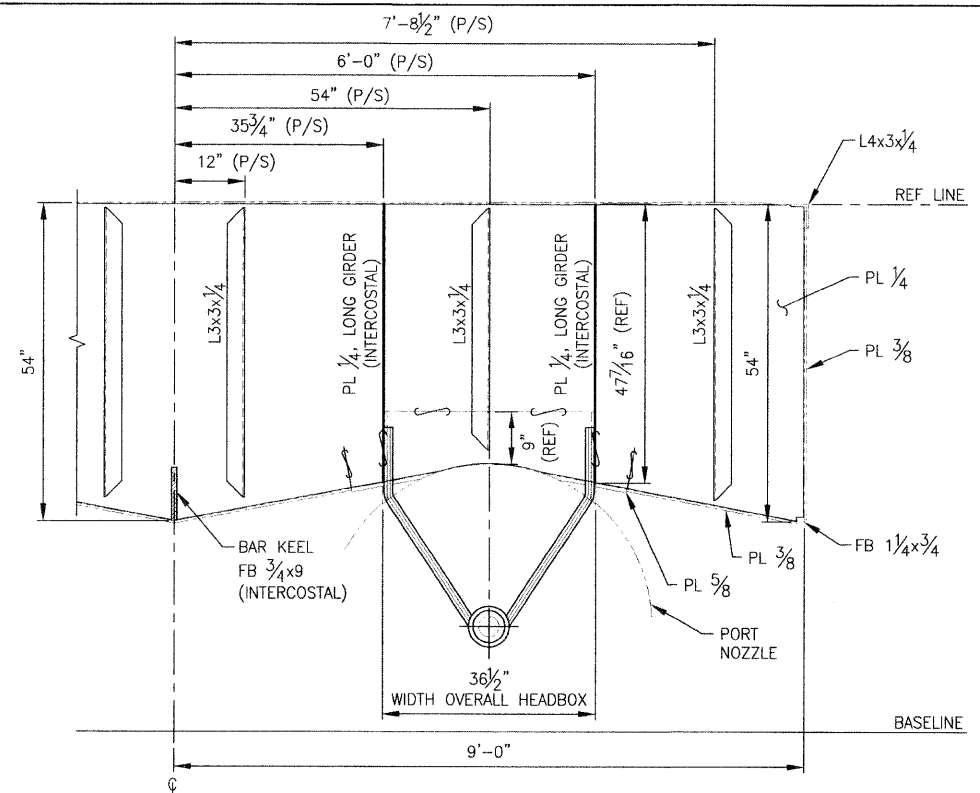
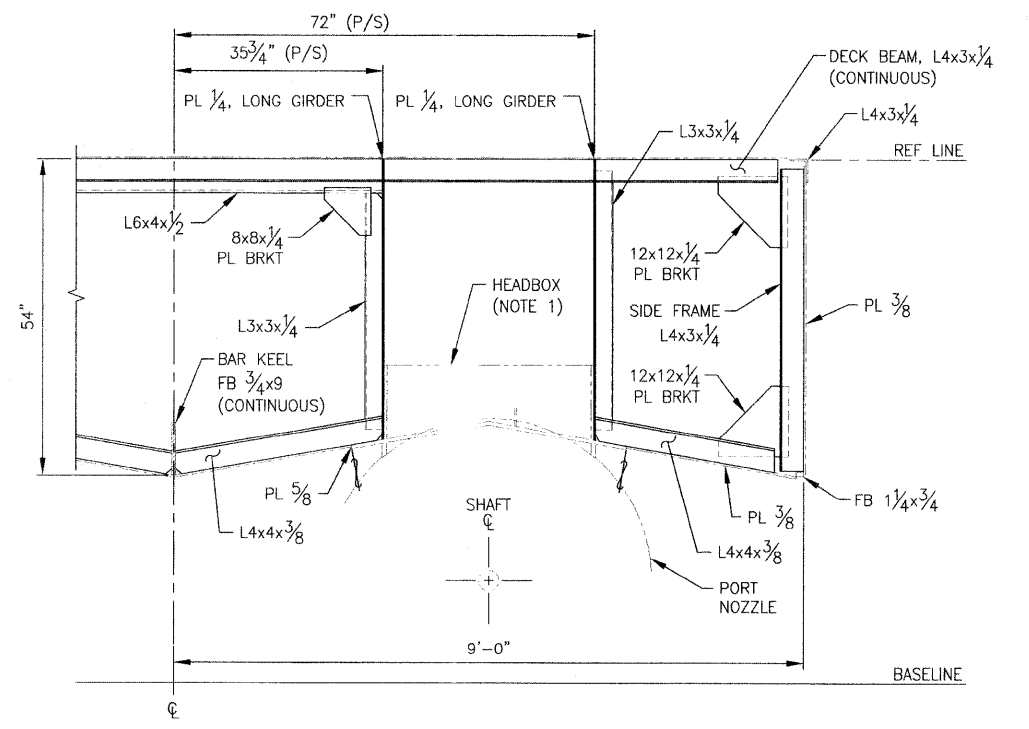


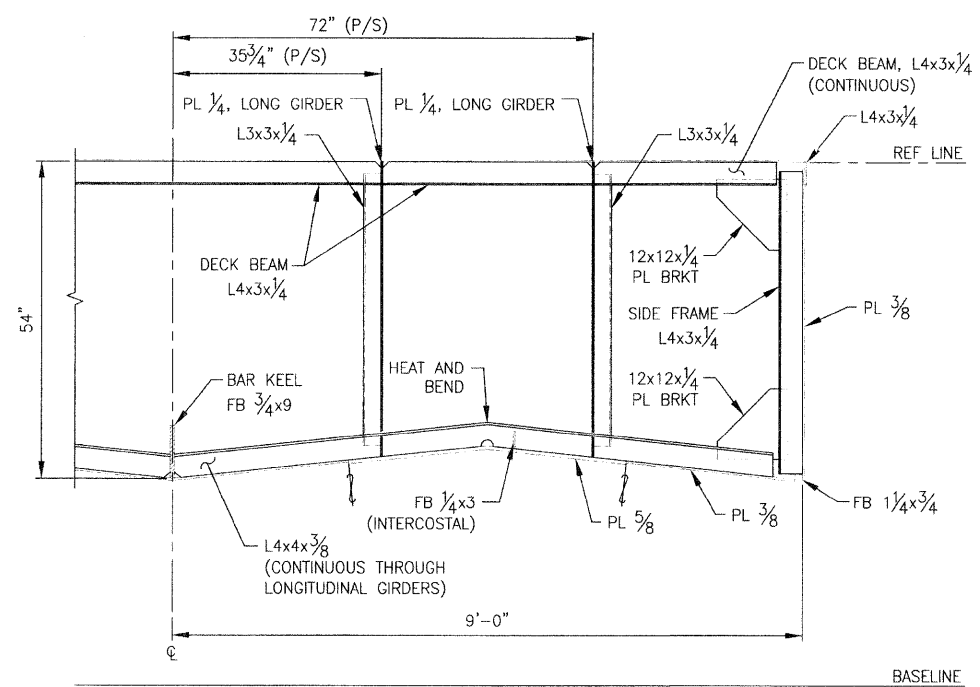
**FRAME 25 SECTION**  
 LOOKING AFT  
 SCALE: 3/4" = 1'-0"



**FRAME 26 SECTION**  
 WT BULKHEAD, LOOKING AFT  
 SCALE: 3/4" = 1'-0"

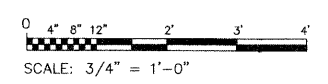


**FRAME 27 SECTION**  
 LOOKING AFT  
 SCALE: 3/4" = 1'-0"



**FRAME 28 SECTION**  
 LOOKING FWD  
 SCALE: 3/4" = 1'-0"

NOTE:  
 1. AFT EDGE OF HEAD BOX ON KORT NOZZLE  
 LOCATED 1 1/2" FWD OF FR 27 MOLDED LINE.



**ART ANDERSON**  
 A.S.C.E. P.E.  
 202 PACIFIC AVE., BREMERTON, WA 98537  
 (360) 479-5900

FILE NAME =	USER NAME =	DESIGNED - A. WINKLEY	REVISED -	<b>STATE OF ILLINOIS DEPARTMENT OF TRANSPORTATION</b>	<b>IDOT BRUSSELS FERRY TRANSVERSE FRAMING - FR 25 TO 28</b>	F.A.P. RTE. 304	SECTION 21-3	COUNTY JERSEY	TOTAL SHEETS 47	SHEET NO. 13	
		DRAWN - J. WALKER	REVISED -			SCALE: AS SHOWN	SHEET NO. OF SHEETS	STA. TO STA.	CONTRACT NO. 76D29		
		CHECKED - P. MARTIN	REVISED -			FED. ROAD DIST. NO. ILLINOIS FED. AID PROJECT					
		DATE - 7/19/2011	REVISED -			<b>Page 41 of 87</b>					