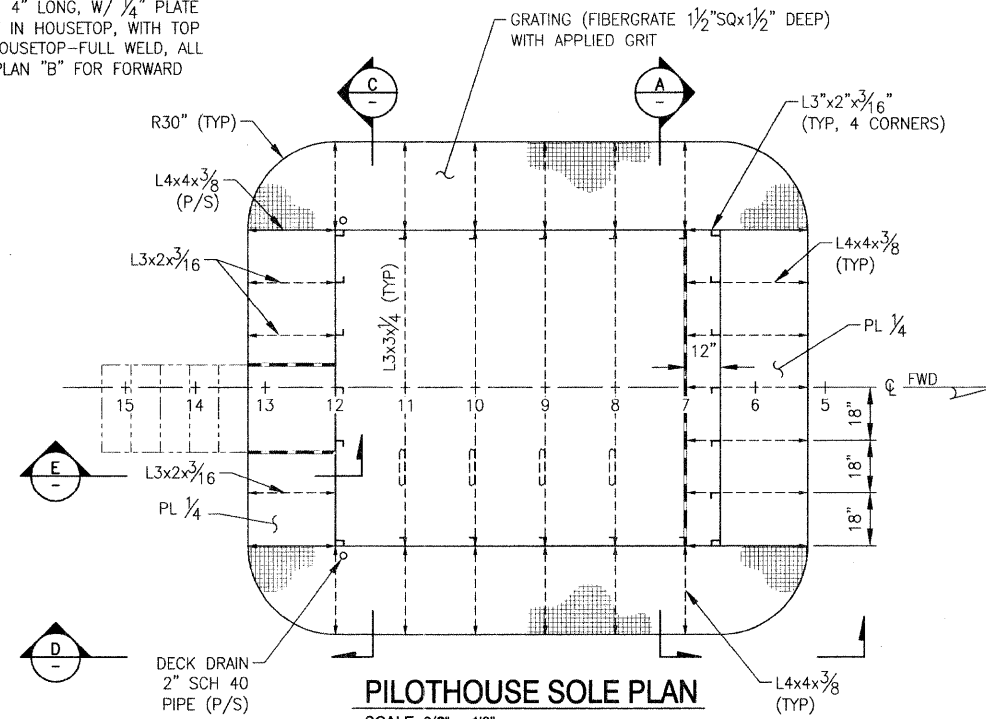
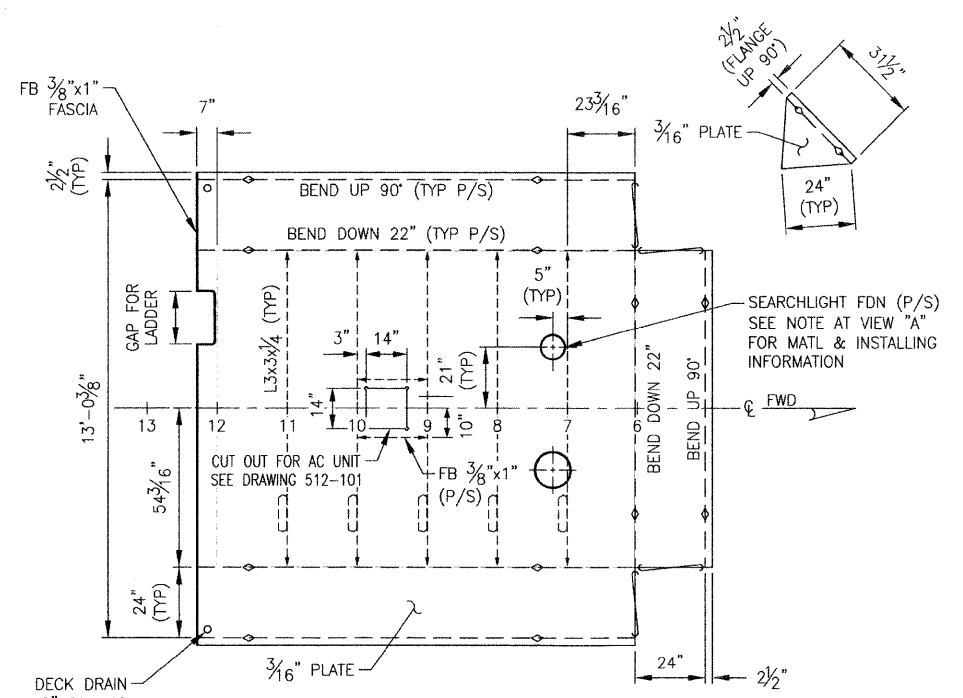


**A PILOTHOUSE FWD BHD**  
LOOKING FWD  
SCALE: 3/8" = 1'0"

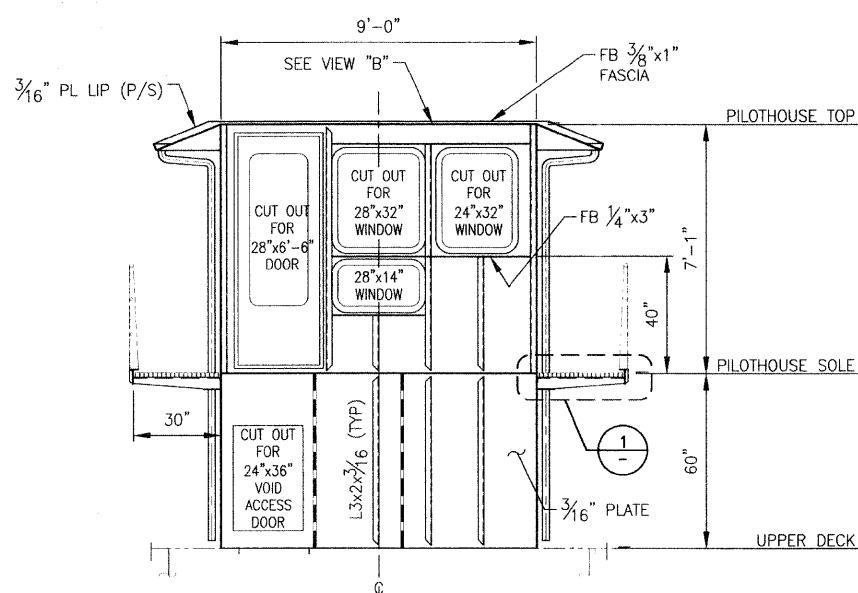
NOTE: SEARCHLIGHT FOUNDATION - 4" LONG, W/ 1/4" PLATE TOP-SET LEVEL AND INSERT IN HOUSETOP, WITH TOP OF PIPE (FWD) 1" ABOVE HOUSETOP-FULL WELD, ALL AROUND. (SEE HOUSETOP, PLAN "B" FOR FORWARD AND AFT LOCATION)



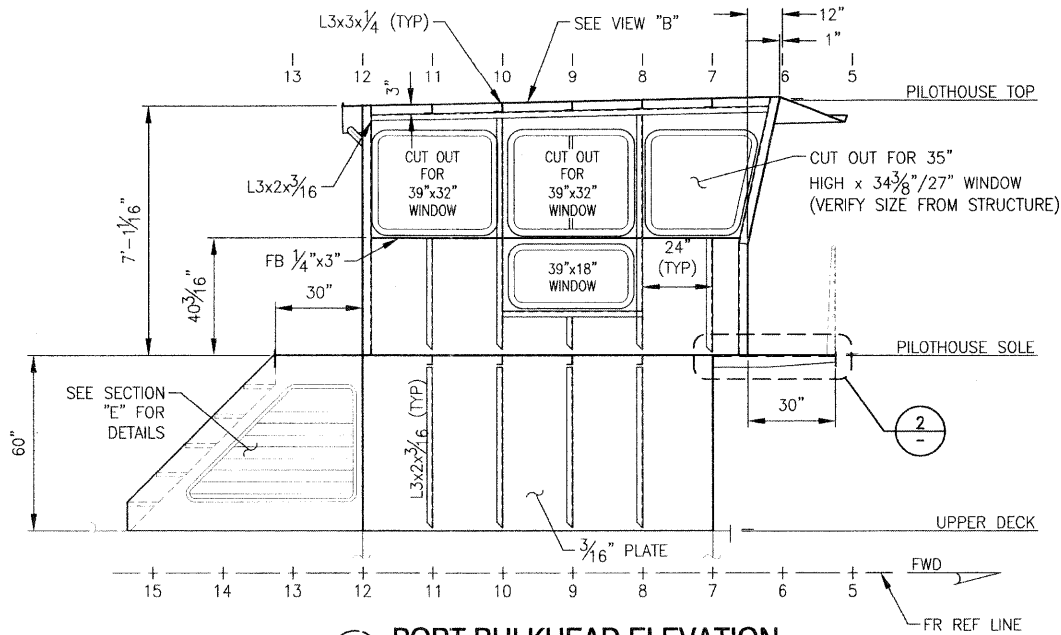
**PILOTHOUSE SOLE PLAN**  
SCALE: 3/8" = 1'0"



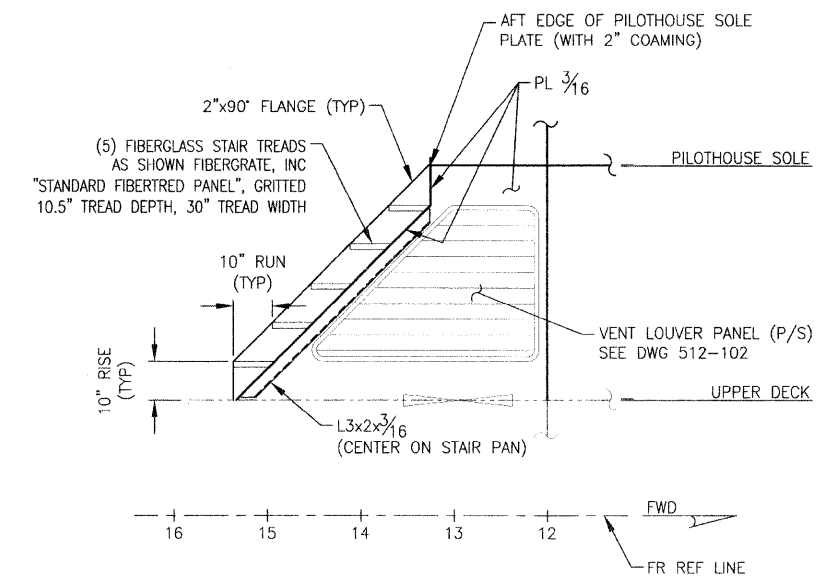
**B PILOTHOUSE TOP (EXPANDED)**  
SCALE: 3/8" = 1'0"



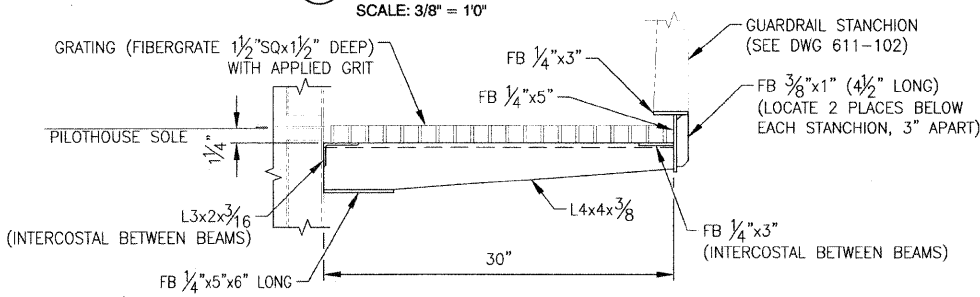
**C PILOTHOUSE AFT BHD**  
LOOKING AFT  
SCALE: 3/8" = 1'0"



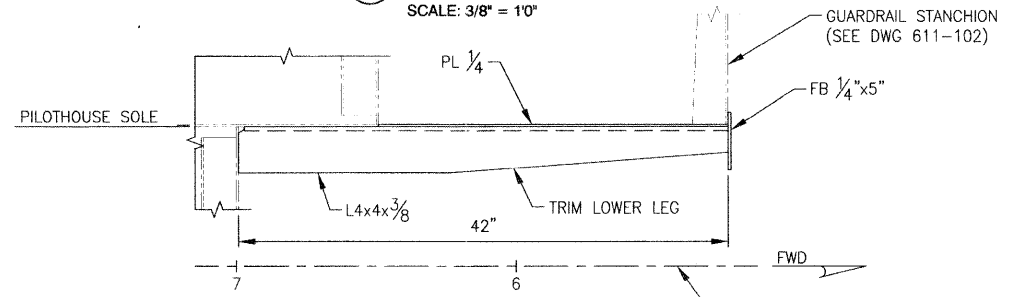
**D PORT BULKHEAD ELEVATION**  
STBD SIDE SIMILAR AND OPPOSITE  
SCALE: 3/8" = 1'0"



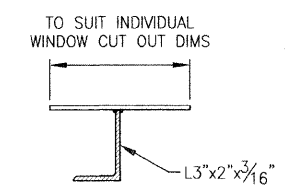
**E PILOTHOUSE STAIRS SECTION**  
THROUGH ENGINE ROOM VENT TRUNK/ PILOTHOUSE STAIRS  
LOOKING TO PORT  
SCALE: 1/2" = 1'0"



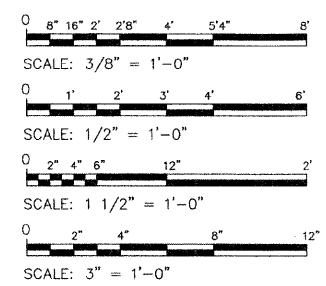
**1 DETAIL**  
CANTILEVER SUPPORT P/S  
SCALE: 1 1/2" = 1'0"



**2 DETAIL**  
CANTILEVER SUPPORT FWD  
SCALE: 1 1/2" = 1'0"



**3 DETAIL**  
THROUGH PILOTHOUSE STRUCTURE  
BETWEEN WINDOWS  
SCALE: 3" = 1'0"



FILE NAME =	USER NAME =	DESIGNED - A. WINKLEY	REVISED -	<b>STATE OF ILLINOIS DEPARTMENT OF TRANSPORTATION</b>	<b>IDOT BRUSSELS FERRY PILOTHOUSE STRUCTURE</b>			F.A.P. RTE. =	SECTION =	COUNTY =	TOTAL SHEETS =	SHEET NO. =	
		DRAWN - J. WALKER	REVISED -		SCALE: AS SHOWN	SHEET NO. OF SHEETS	STA. TO STA.	304	21-3	JERSEY	47	17	
		CHECKED - P. MARTIN	REVISED -										
		DATE - 7/19/2011	REVISED -										
								DRAWING NO. CEIDT001PB-152-101					
								CONTRACT NO. 76D29					