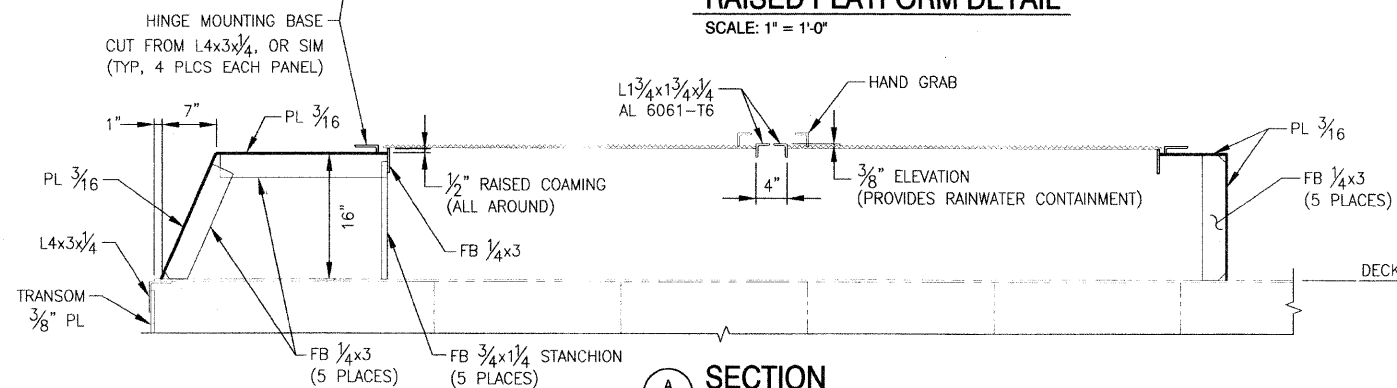
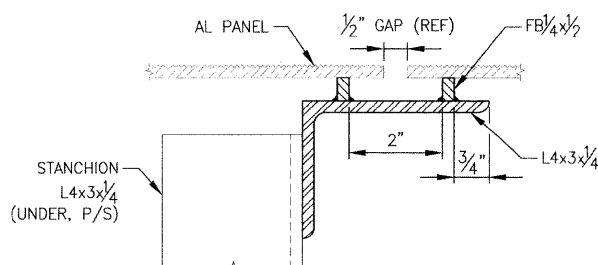


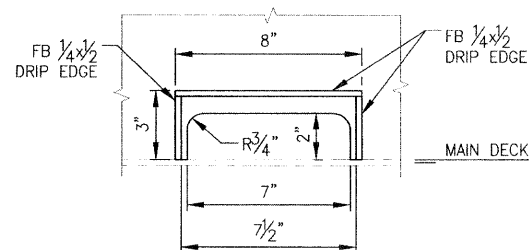
RAISED PLATFORM DETAIL
SCALE: 1" = 1'-0"



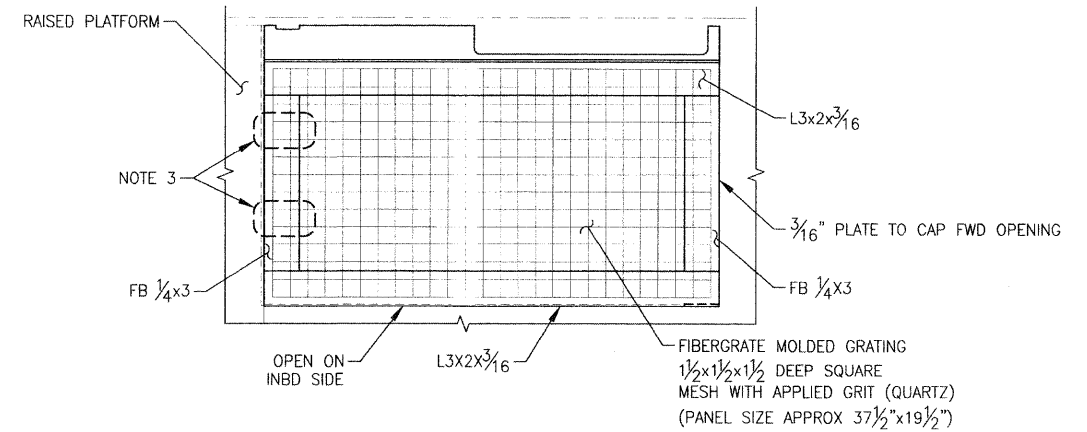
SECTION A
SCALE: 1" = 1'-0"



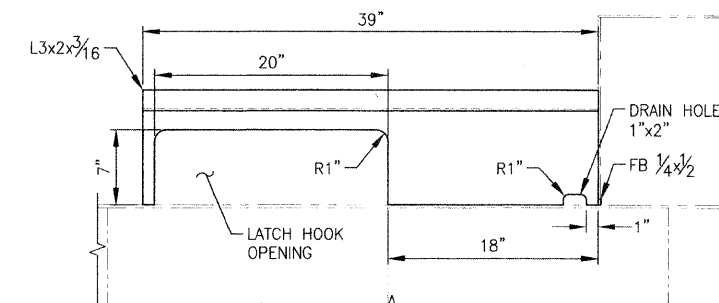
SECTION B
SCALE: 6" = 1'-0"



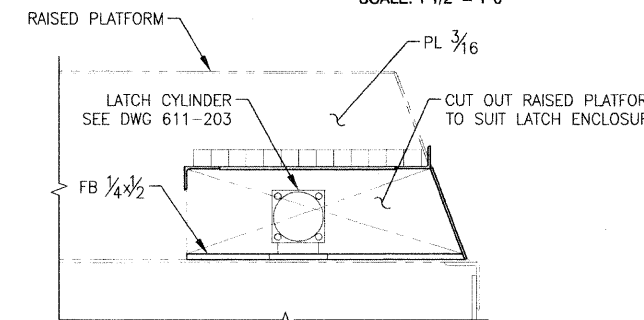
HAWSE HOLE DETAIL
LOOKING INBOARD
SCALE: 3" = 1'-0"



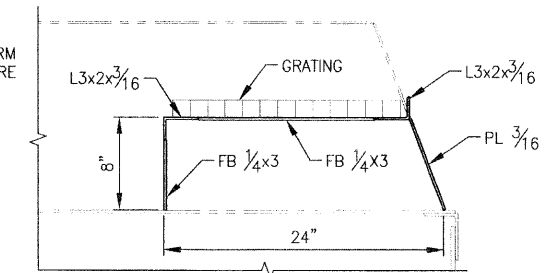
1 LATCH ENCLOSURE STEP DETAIL
STBD SIDE SYMMETRICALLY OPPOSITE
SCALE: 1 1/2" = 1'-0"



2 LATCH ENCLOSURE STEP DETAIL
LOOKING INBOARD
SCALE: 1 1/2" = 1'-0"



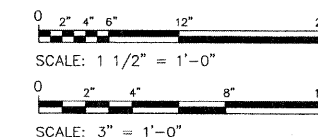
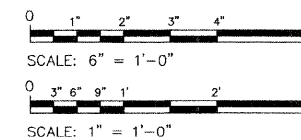
3 LATCH ENCLOSURE STEP DETAIL
LOOKING AFT
SCALE: 1 1/2" = 1'-0"



4 LATCH ENCLOSURE STEP DETAIL
LOOKING AFT
SCALE: 1 1/2" = 1'-0"

NOTES:

- SCANTLINGS DENOTED BY "AL" ARE ALUMINUM.
- TRIM 2 1/2" OFF EACH END OF LOWER LEG OF 1 3/4" x 1 3/4" x 1/4" ANGLE FLUSH W/ UNDERSIDE OF AL PL (TYP, EACH OF SIX PANELS).
- FASTEN AFT EDGE OF GRATING TO FLATBAR WITH HEAVY DUTY CABLE TIES.



FILE NAME =	USER NAME =	DESIGNED -- A. WINKLEY	REVISED --
		DRAWN -- J. WALKER	REVISED --
		CHECKED -- P. MARTIN	REVISED --
		DATE -- 7/19/2011	REVISED --

**STATE OF ILLINOIS
DEPARTMENT OF TRANSPORTATION**

**IDOT BRUSSELS FERRY
HATCHES AND RAISED PLATFORM**

F.A.P. RTE. 304	SECTION 21-3	COUNTY JERSEY	TOTAL SHEETS 47	SHEET NO. 18
DRAWING NO. CEIDT001PB-167-101		CONTRACT NO. 76D29		
SCALE: NTS		SHEET NO. OF SHEETS STA. TO STA.		