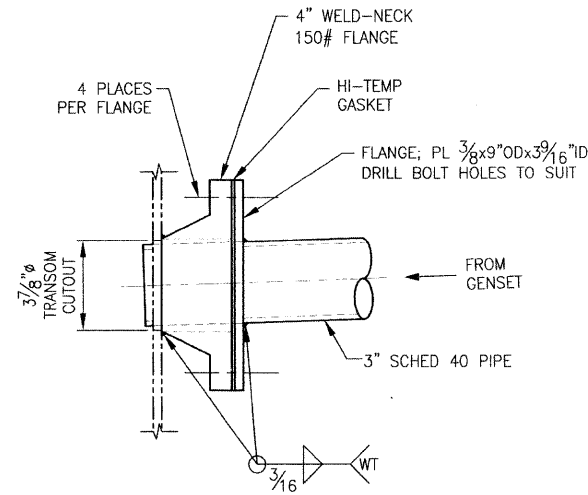
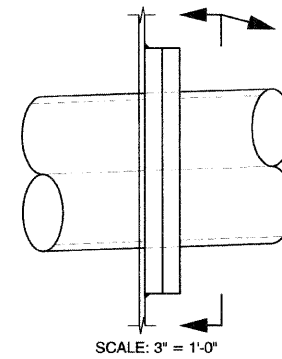


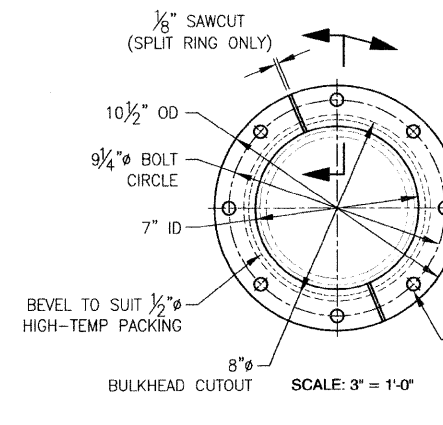
**DETAIL**  
TRANSOM EXHAUST PENETRATION  
SCALE: 3" = 1'-0"



**DETAIL**  
TRANSOM EXHAUST PENETRATION  
SCALE: 3" = 1'-0"

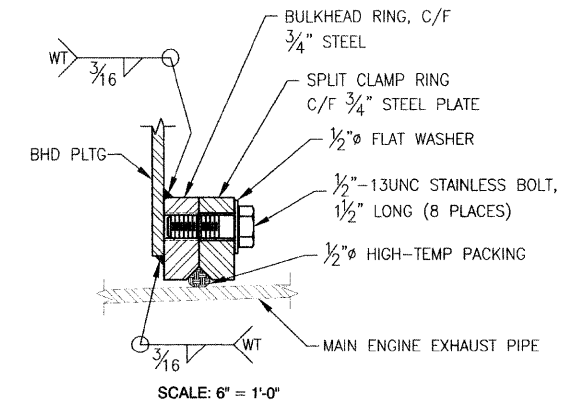


SCALE: 3" = 1'-0"

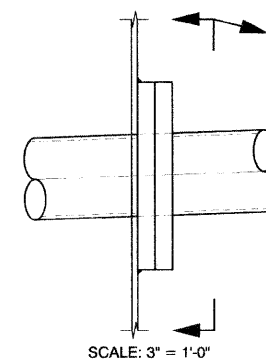


DRILL/TAP BULKHEAD RING 1/2"-13UNC, (8 PLACES)  
DRILL SPLIT CLAMP RING 9/16" FOR BOLTS, (8 PLACES)

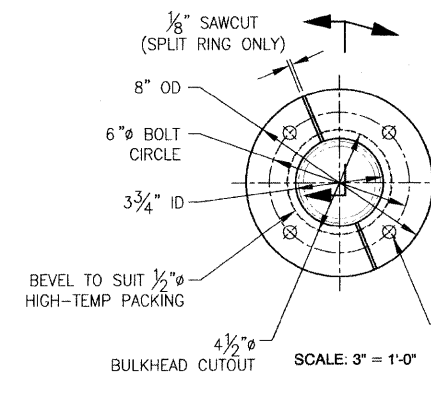
**DETAIL**  
MAIN ENGINE BULKHEAD EXHAUST PENETRATION  
SCALE: AS SHOWN



SCALE: 6" = 1'-0"

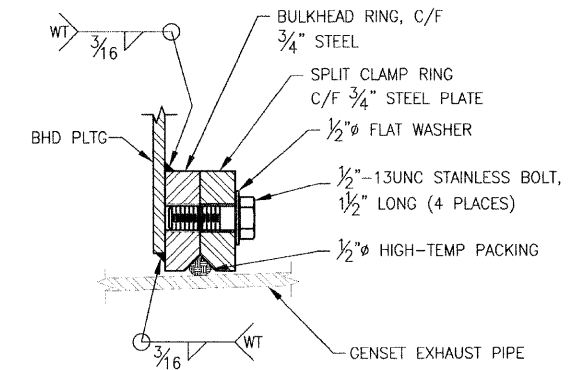


SCALE: 3" = 1'-0"

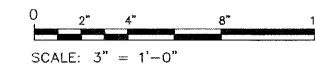


DRILL/TAP BULKHEAD RING 1/2"-13UNC, (4 PLACES)  
DRILL SPLIT CLAMP RING 9/16" FOR BOLTS, (4 PLACES)

**DETAIL**  
GENSET BULKHEAD EXHAUST PENETRATION  
SCALE: AS SHOWN



SCALE: 6" = 1'-0"



DRAWING NO. CEIDT001PB-259-102

FILE NAME =	USER NAME =	DESIGNED — A. WINKLEY	REVISED —	<b>STATE OF ILLINOIS DEPARTMENT OF TRANSPORTATION</b>	<b>IDOT BRUSSELS FERRY ENGINE EXHAUST PIPING DETAILS</b>			F.A.P. RTE. 304	SECTION 21-3	COUNTY JERSEY	TOTAL SHEETS 47	SHEET NO. 26
	PLOT SCALE =	DRAWN — C. FAWVER	REVISED —		SCALE: AS SHOWN	SHEET NO. OF SHEETS	STA. TO STA.	CONTRACT NO. 76D29				
	PLOT DATE =	CHECKED — P. MARTIN	REVISED —					FED. ROAD DIST. NO. ILLINOIS FED. AID PROJECT				
		DATE — 7/19/2011	REVISED —									