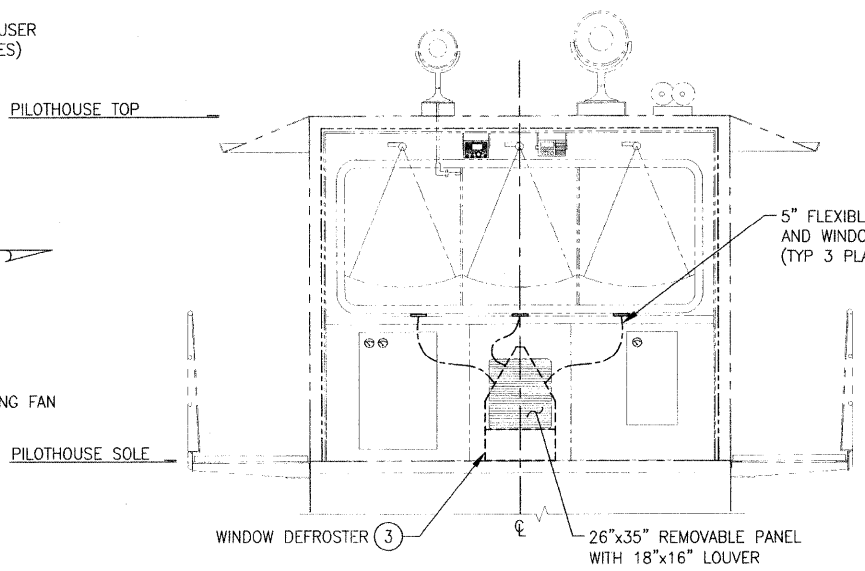
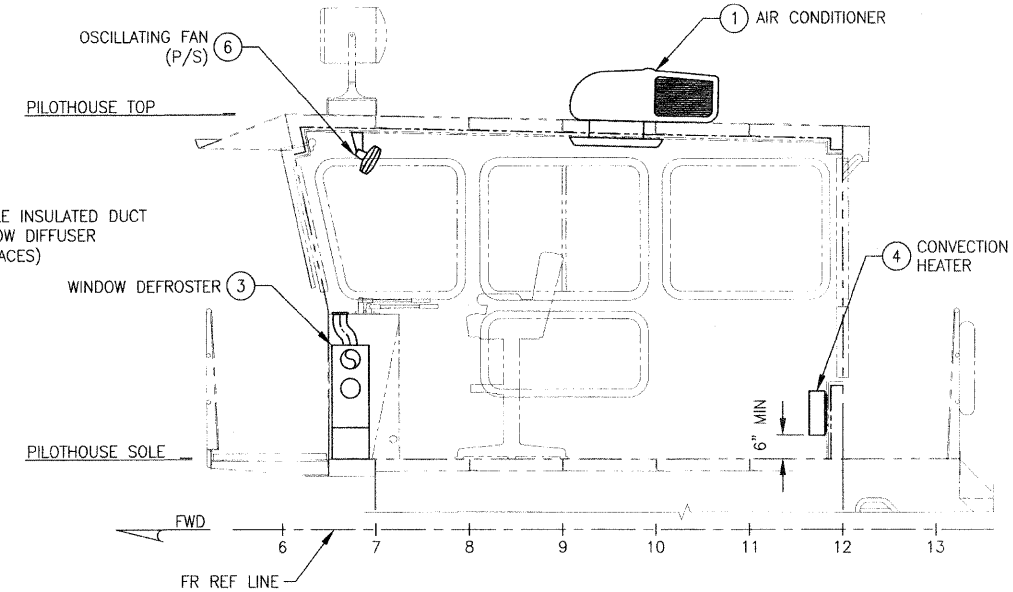


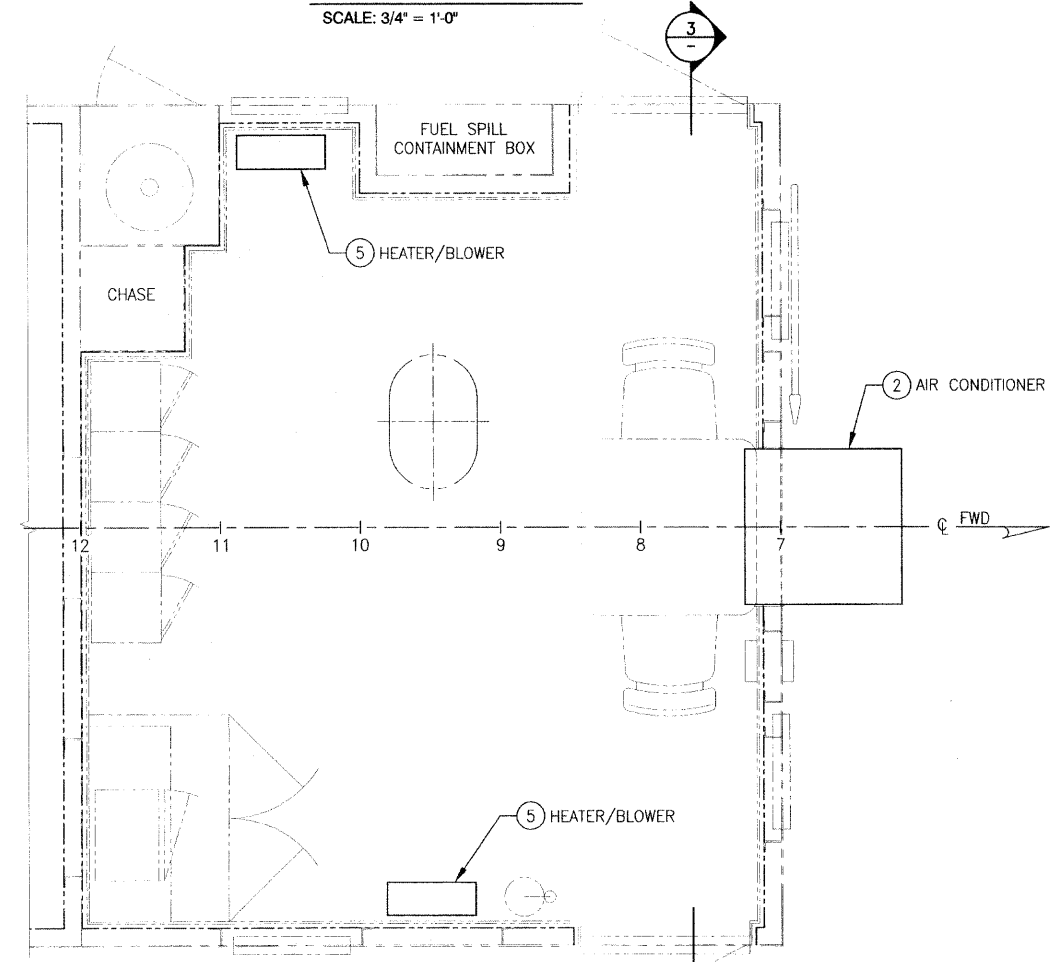
**PILOTHOUSE PLAN**  
SCALE: 3/4" = 1'-0"



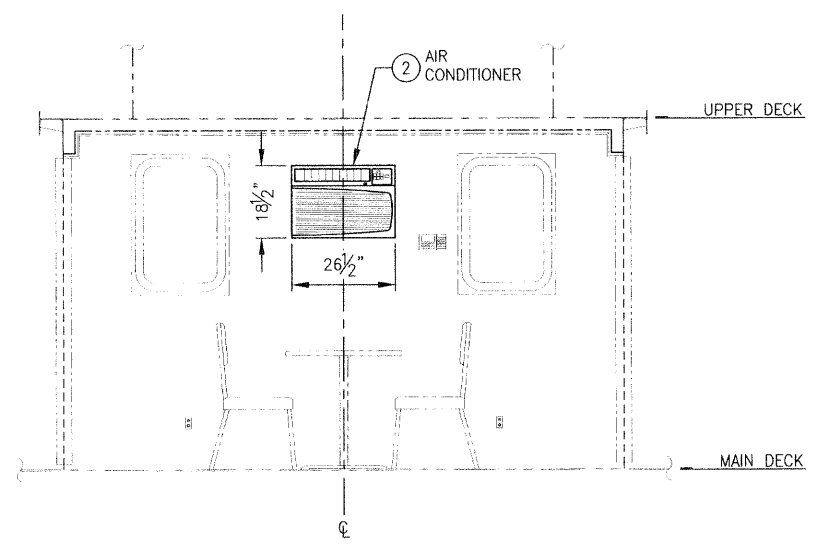
**1 FWD BHD ARRANGEMENT**  
LOOKING FWD  
SCALE: 1/2" = 1'-0"



**2 STBD BHD ARRANGEMENT**  
LOOKING OUTBD  
SCALE: 1/2" = 1'-0"



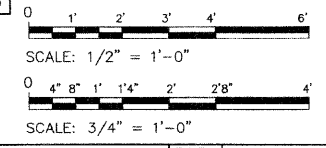
**DECKHAND ROOM PLAN**  
SCALE: 3/4" = 1'-0"



**3 FWD BHD ARRANGEMENT**  
LOOKING FWD  
SCALE: 1/2" = 1'-0"

BILL OF MATERIAL				
PC NO.	QTY	DESCRIPTION	MATERIAL/SPECIFICATION/REMARKS	
1	1 EA	AIR CONDITIONER - ROOF TOP	COLEMAN SEAMACH 48203-8866, 13,500 BTU/HR, 120VAC, 60HZ, 1 PHASE, OR EQUAL	NOTE 4
2	1 EA	AIR CONDITIONER - WINDOW	CARRIER MARINE KCB233P, 22,350 BTU/HR, 230VAC, 60HZ, 1 PHASE, OR EQUAL	NOTE 4
3	1 EA	WINDOW DEFROSTER	DOMETIC MARINE MODEL PHDCM, 1.5(KW), 305CFM, 240VAC, 1 PHASE, 60HZ, OR EQUAL	NOTE 4
4	1 EA	CONVECTION HEATER	CHROMALOX MODEL H-2407, 3.0KW, 240V, 60HZ, 1 PHASE, OR EQUAL	NOTE 4
5	2 EA	AIR HEATER BLOWER	CHROMALOX RSFM 2101ST-L, 1.0KW, 120VAC, 60HZ, 1 PHASE, OR EQUAL	NOTE 4
6	2 EA	FAN OSCILLATING	GUEST, #900, 150CFM OR EQUAL - 12VDC, OR EQUAL	NOTE 5

- NOTES:**
- FOR PILOTHOUSE, VOID AND DECKHOUSE/UPPER ENGINE ROOM STRUCTURE, SEE DRAWING 151-101 AND 151-102; FOR PILOTHOUSE AND DECKHAND ROOM INTERIORS AND JOINERWORK, SEE DRAWINGS 621-101 AND 621-102.
  - VENTILATION OF THE PILOTHOUSE SHALL BE NATURAL VIA THE AFT DOOR, OPENING MIDDLE SIDE WINDOWS AND ROOF TOP AC OUTSIDE AIR INTERNAL DAMPER; DECKHAND ROOM OUTSIDE AIR VENTILATION PROVIDED VIA INTERNAL AC UNIT DAMPER AND OPENING EXTERIOR DOORS.
  - AIR CONDITIONER (PC NO2) SHALL BE "THROUGH-THE-WALL" TYPE, SLEEVE MOUNTED WITH WEATHER TIGHT SEAL THROUGH THE FORWARD DECKHAND ROOM BULKHEAD AS SHOWN ON THE DRAWING. ALL CONTROLS FOR BOTH AIR CONDITIONERS SHALL BE IN THE PILOTHOUSE AND LOCAL AT AC UNIT.
  - SEE 321-103 FOR ELECTRICAL CONNECTIONS.
  - SEE 321-102 FOR ELECTRICAL CONNECTONS.



FILE NAME =	USER NAME =	DESIGNED - M. MCKAY	REVISED -
		DRAWN - J. WALKER	REVISED -
		CHECKED - P. MARTIN	REVISED -
		DATE - 7/19/2011	REVISED -

**STATE OF ILLINOIS  
DEPARTMENT OF TRANSPORTATION**

**IDOT BRUSSELS FERRY  
HVAC ARRANGEMENT AND DETAILS**

SCALE: AS SHOWN SHEET NO. OF SHEETS STA. TO STA.

F.A.P. RTE.	SECTION	COUNTY	TOTAL SHEETS	SHEET NO.
304	21-3	JERSEY	47	33
CONTRACT NO. 76D29			FED. ROAD DIST. NO. ILLINOIS FED. AID PROJECT	