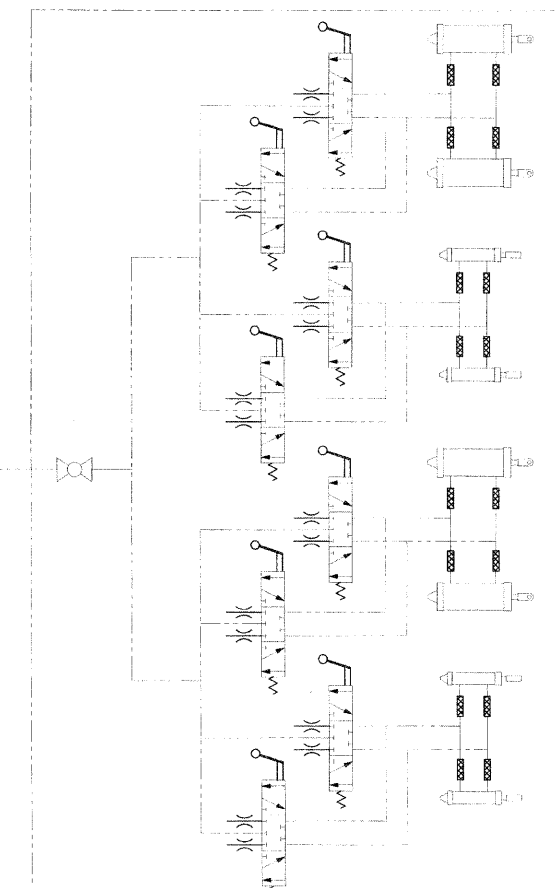
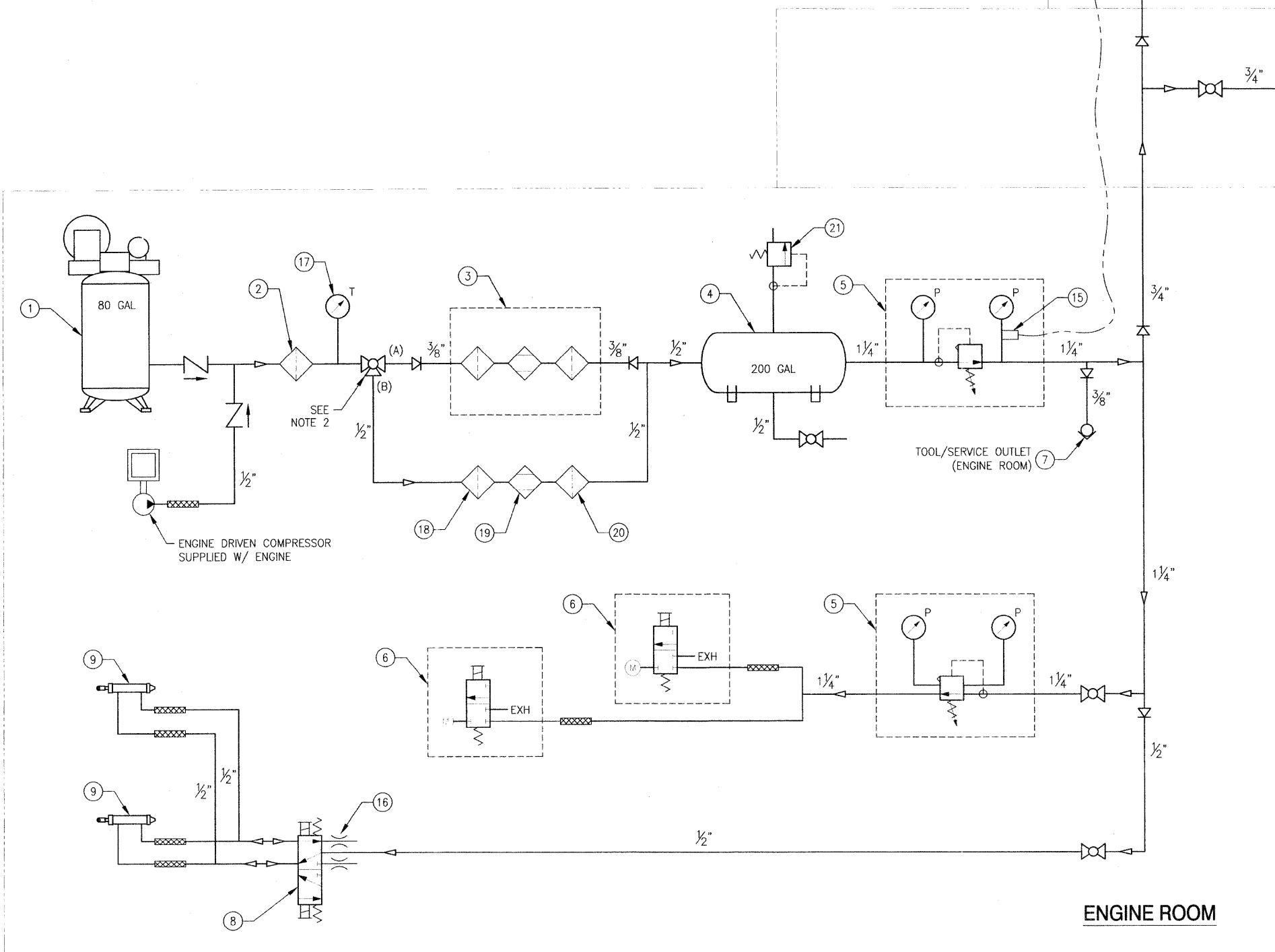


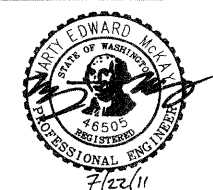
MATERIAL SCHEDULE							
SERVICE	SIZE	PIPE	TAKEDOWN JOINTS	FITTINGS	VALVES		FLEXIBLE CONNECTIONS
					BODY	TRIM	
PNEUMATIC PIPING 140 PSIG	ALL	PIPE: SCHED 40, SEAMLESS CARBON STEEL ASTM A-106 GRADE B ANSI B36.10	UNIONS: SOCKET WELD OR THREADED CARBON STEEL ASTM A 105/A 105M MSS-SP-83	SOCKET WELD: STEEL ASTM A 234/A 234M OR WPB OR A 105/A 105M ANSI B16.11	BALL: BRONZE FLANGED ASME SB61 OR SB62 MSS-SP-72	CRES	HOSE: SAE J-1942 REINFORCED
		FLANGES: SOCKET WELD OR SLIP-ON CARBON STEEL ASTM A 105/A 105M ANSI B16.5			CHECK: CARBON STEEL FLANGED, ASTM A216/A 216M OR ASTM A105/A 105M		HOSE FITTINGS: SAE J-1475



BARGE PNEUMATIC SYSTEM PIPING
SEE DWG CEIDT001BA-551-201

BILL OF MATERIAL			
PC NO.	QTY	DESCRIPTION	MATERIAL/SPECIFICATION/REMARKS
1	1 EA	AIR COMPRESSOR, 5 HP, 80 GAL RECEIVER	INGERSOLL RAND 2475N5-P, PREMIUM PACKAGE
2	1 EA	GENERAL FILTER	INGERSOLL RAND F-351G
3	1 EA	DESICCANT AIR DRYER	INGERSOLL RAND D-341M
4	1 EA	AIR RECEIVER, 200 GAL, HORIZONTAL	HANSON, 30-HA-200-W
5	2 EA	PRESSURE REGULATING VALVE, 1 1/4"	PARKER R119-100G, W/ GAUGE KITS, K4520N14160
6	2 EA	PNEUMATIC ENGINE STARTER & CONTROL VALVE	TDI 306I & TDI RLVA-25683-012-1-00 SEE 321-102
7	1 EA	QUICK DISCONNECT, 3/8" FEMALE	COML
8	1 EA	DIRECTIONAL CONTROL VALVE, 1/2", BOSCH REXROTH	TYPE "D" PILOTAIR PD4-42-1515 SEE 321-102
9	2 EA	PNEUMATIC CYLINDER, LATCHING	PARKER HANNIFIN 4.00CBB-2AU58ACx6.875
10	1 EA	DUAL TRUMPET AIRHORN	KAHLENBERG D-0A
11	1 EA	MANUAL CONTROL VALVE	KAHLENBERG V-11
12	1 EA	STRAINER	KAHLENBERG M-99
13	1 EA	QUICK DISCONNECT, 3/4" FEMALE	COML
14	1 EA	PRESSURE GAUGE, 200 PSI	ORDERED ON 401-101
15	1 EA	PRESSURE TRANSDUCER	WIKA WK8363485 SEE 401-101
16	2 EA	MUFFLER/FLOW CONTROL, 1/2"	PARKER HANNIFIN 04508.0080
17	1 EA	TEMPERATURE GAUGE, 50F-400F, W/ THERMOWELL	McMASTER-CARR 3470K51
18	1 EA	OIL FILTER	INGERSOLL RAND F-351H
19	1 EA	INLINE DESICCANT AIR DRYER	PARKER DD30-04
20	1 EA	DUST FILTER	INGERSOLL RAND F-351D
21	1 EA	PRESSURE RELIEF VALVE	PARKER RV01A1N-154PSI

- NOTES:
- TESTING OF COMPRESSED AIR SHALL BE IN ACCORDANCE WITH 46 CFR 58.30-35 AND AS FOLLOWS. ALL COMPRESSED AIR PIPING ASSEMBLIES AND ASSOCIATED EQUIPMENT SHALL BE TESTED AT 1.5 TIMES THE MAXIMUM WORKING PRESSURE OF 140 PSIG. THE REQUIRED TEST PRESSURE (210 PSIG) SHALL BE MAINTAINED FOR A SUFFICIENT AMOUNT OF TIME TO CHECK ALL COMPONENTS FOR STRENGTH AND POROSITY AND TO PERMIT AN INSPECTION TO BE MADE OF ALL CONNECTIONS.
 - PROVIDE VALVE LABEL PLATE STATING:
ALIGN 3-WAY VALVE TO PORT (B) WHEN OUT SIDE AIR TEMP IS ABOVE 60°F OR WHEN USING THE ENGINE DRIVEN AIR COMPRESSOR.



ART ANDERSON ASSOCIATES
202 PACIFIC AVE. BREWSTER, WA 98537
(360) 479-5600

FILE NAME =	USER NAME =	DESIGNED - M. McKAY	REVISED -
		DRAWN - J. WALKER	REVISED -
		CHECKED - P. MARTIN	REVISED -
		DATE - 7/19/2011	REVISED -

STATE OF ILLINOIS
DEPARTMENT OF TRANSPORTATION

IDOT BRUSSELS FERRY
COMPRESSED AIR SYSTEM

SCALE: AS SHOWN SHEET NO. OF SHEETS STA. TO STA.

F.A.P. RTE. 304	SECTION 21-3	COUNTY JERSEY	TOTAL SHEETS 47	SHEET NO. 39
FED. ROAD DIST. NO. ILLINOIS			CONTRACT NO. 76D29	