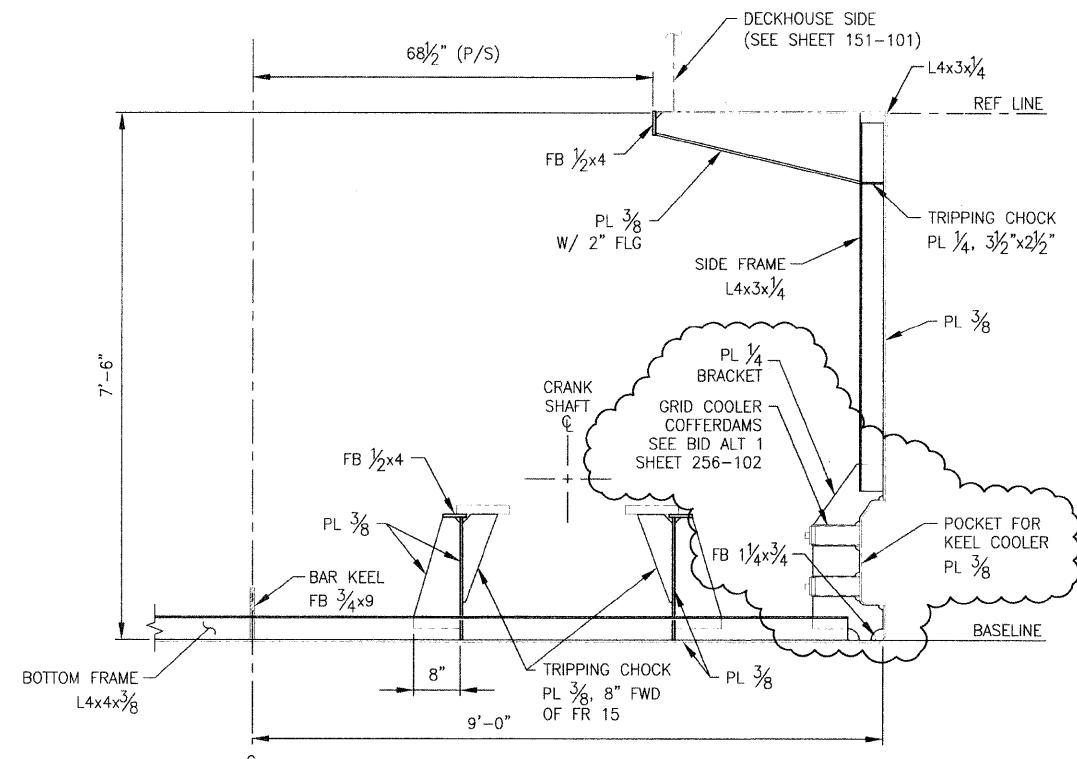
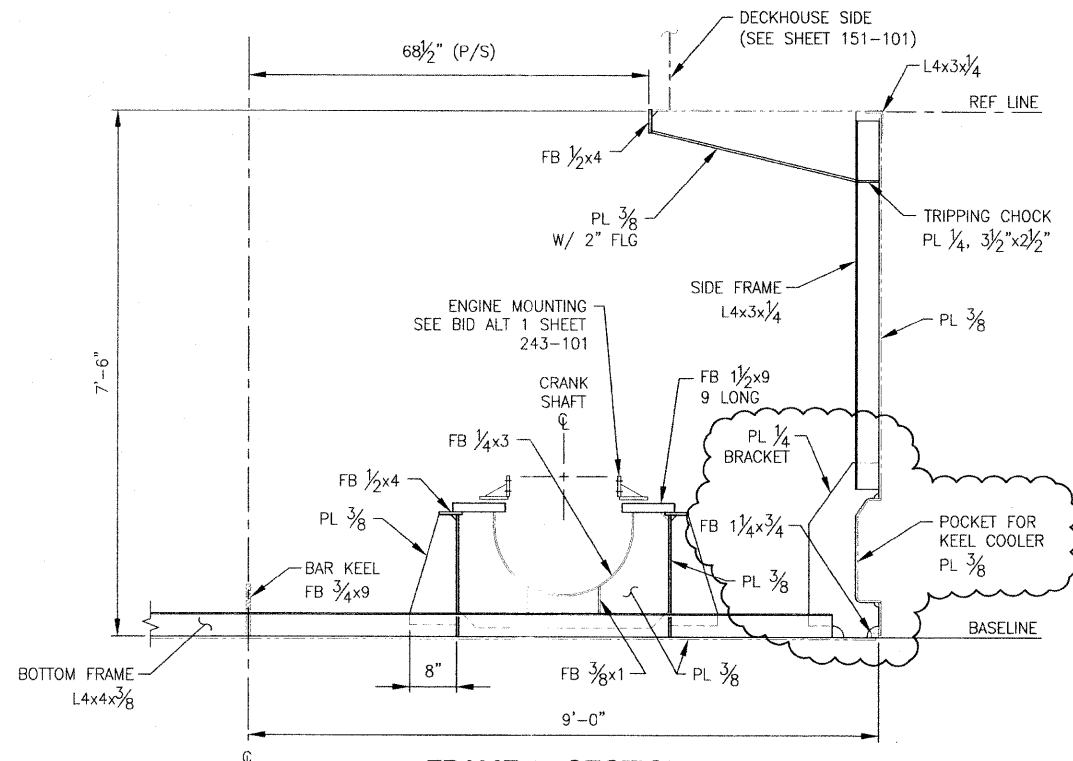


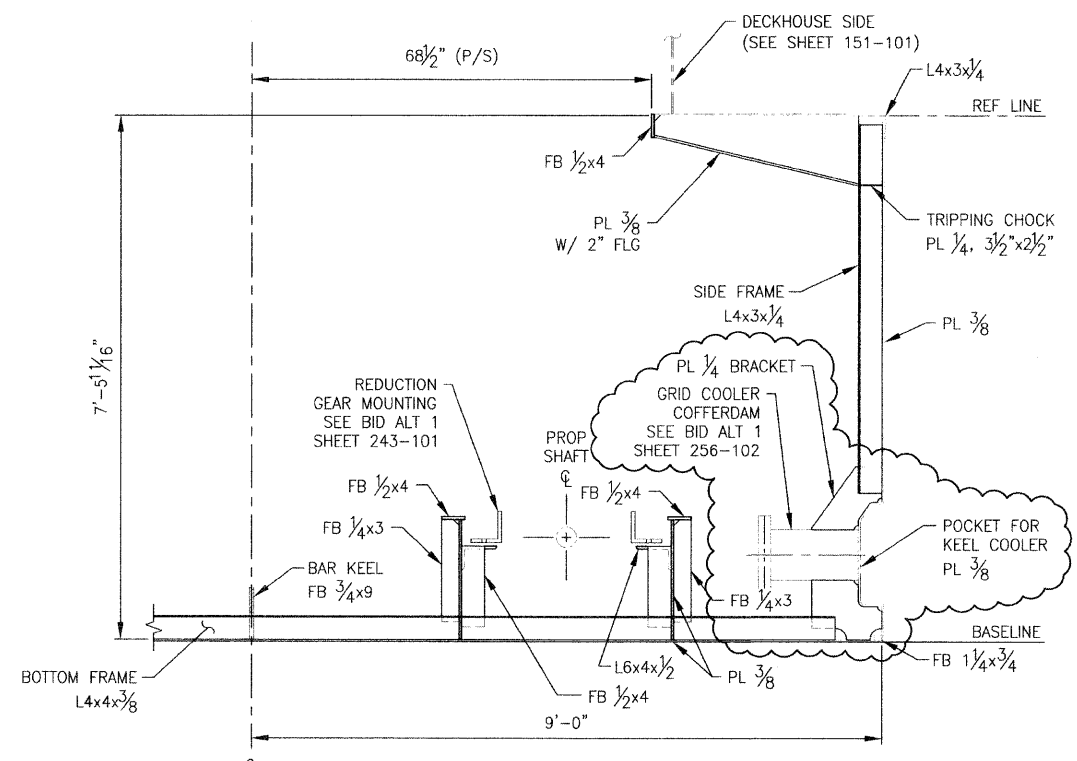
FRAME 13 SECTION
LOOKING FWD
SCALE: 3/4" = 1'-0"



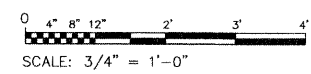
FRAME 14 SECTION
LOOKING FWD
SCALE: 3/4" = 1'-0"



FRAME 15 SECTION
LOOKING AFT
SCALE: 3/4" = 1'-0"



FRAME 16 SECTION
LOOKING AFT
SCALE: 3/4" = 1'-0"



ART ANDERSON ASSOCIATES
252 PACIFIC AVE. BIRMINGHAM, WA 98337
(509) 479-5500

| | | | |
|-------------|-------------|-----------------------|-----------|
| FILE NAME = | USER NAME = | DESIGNED - A. WINKLEY | REVISED - |
| | | DRAWN - J. WALKER | REVISED - |
| | | CHECKED - P. MARTIN | REVISED - |
| | | DATE - 7/26/2011 | REVISED - |

STATE OF ILLINOIS DEPARTMENT OF TRANSPORTATION

IDOT BRUSSELS FERRY - BID ALTERNATE TRANSVERSE FRAMING - FR 13 TO 16

SCALE: AS SHOWN SHEET NO. OF SHEETS STA. TO STA.

| | | | | |
|--------------------|---------|--------|---|-----------|
| F.A.P. RTE. | SECTION | COUNTY | TOTAL SHEETS | SHEET NO. |
| 304 | 21-3 | JERSEY | 47 | 10 |
| CONTRACT NO. 76D29 | | | FED. ROAD DIST. NO. ILLINOIS FED. AID PROJECT | |