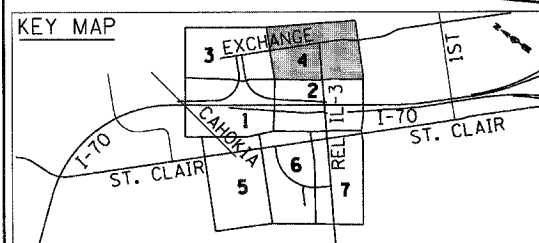
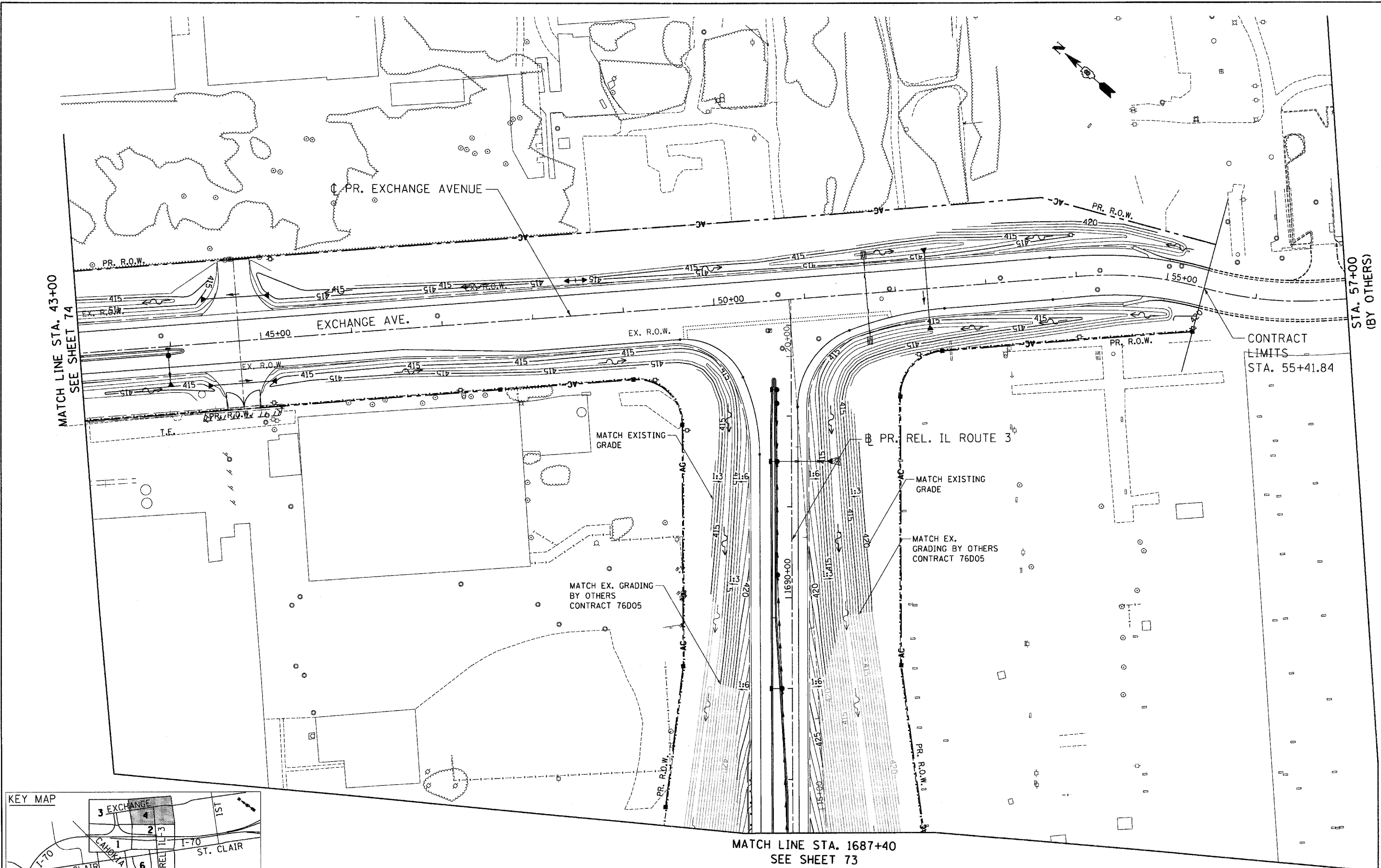


\SBCONN-99-MOTIF1.DGN, \SBCONN-11-OPERATION.DGN, \SBCONN-11-MOTIF1.DGN, \SBCONN-11-LEADER.DGN, \SBCONN-11-LAYOUT.DGN, \SBCONN-11-MOTIF1.DGN, \SBCONN-11-SHEET1.DGN, \SBCONN-11-SHEET2.DGN, \SBCONN-11-SHEET3.DGN, \SBCONN-11-SHEET4.DGN, \SBCONN-11-SHEET5.DGN, \SBCONN-11-SHEET6.DGN, \SBCONN-11-SHEET7.DGN, \SBCONN-11-SHEET8.DGN, \SBCONN-11-SHEET9.DGN, \SBCONN-11-SHEET10.DGN, \SBCONN-11-SHEET11.DGN, \SBCONN-11-SHEET12.DGN, \SBCONN-11-SHEET13.DGN, \SBCONN-11-SHEET14.DGN, \SBCONN-11-SHEET15.DGN, \SBCONN-11-SHEET16.DGN, \SBCONN-11-SHEET17.DGN, \SBCONN-11-SHEET18.DGN, \SBCONN-11-SHEET19.DGN, \SBCONN-11-SHEET20.DGN, \SBCONN-11-SHEET21.DGN, \SBCONN-11-SHEET22.DGN, \SBCONN-11-SHEET23.DGN, \SBCONN-11-SHEET24.DGN, \SBCONN-11-SHEET25.DGN, \SBCONN-11-SHEET26.DGN, \SBCONN-11-SHEET27.DGN, \SBCONN-11-SHEET28.DGN, \SBCONN-11-SHEET29.DGN, \SBCONN-11-SHEET30.DGN, \SBCONN-11-SHEET31.DGN, \SBCONN-11-SHEET32.DGN, \SBCONN-11-SHEET33.DGN, \SBCONN-11-SHEET34.DGN, \SBCONN-11-SHEET35.DGN, \SBCONN-11-SHEET36.DGN, \SBCONN-11-SHEET37.DGN, \SBCONN-11-SHEET38.DGN, \SBCONN-11-SHEET39.DGN, \SBCONN-11-SHEET40.DGN, \SBCONN-11-SHEET41.DGN, \SBCONN-11-SHEET42.DGN, \SBCONN-11-SHEET43.DGN, \SBCONN-11-SHEET44.DGN, \SBCONN-11-SHEET45.DGN, \SBCONN-11-SHEET46.DGN, \SBCONN-11-SHEET47.DGN, \SBCONN-11-SHEET48.DGN, \SBCONN-11-SHEET49.DGN, \SBCONN-11-SHEET50.DGN, \SBCONN-11-SHEET51.DGN, \SBCONN-11-SHEET52.DGN, \SBCONN-11-SHEET53.DGN, \SBCONN-11-SHEET54.DGN, \SBCONN-11-SHEET55.DGN, \SBCONN-11-SHEET56.DGN, \SBCONN-11-SHEET57.DGN, \SBCONN-11-SHEET58.DGN, \SBCONN-11-SHEET59.DGN, \SBCONN-11-SHEET60.DGN, \SBCONN-11-SHEET61.DGN, \SBCONN-11-SHEET62.DGN, \SBCONN-11-SHEET63.DGN, \SBCONN-11-SHEET64.DGN, \SBCONN-11-SHEET65.DGN, \SBCONN-11-SHEET66.DGN, \SBCONN-11-SHEET67.DGN, \SBCONN-11-SHEET68.DGN, \SBCONN-11-SHEET69.DGN, \SBCONN-11-SHEET70.DGN, \SBCONN-11-SHEET71.DGN, \SBCONN-11-SHEET72.DGN, \SBCONN-11-SHEET73.DGN, \SBCONN-11-SHEET74.DGN, \SBCONN-11-SHEET75.DGN, \SBCONN-11-SHEET76.DGN, \SBCONN-11-SHEET77.DGN, \SBCONN-11-SHEET78.DGN, \SBCONN-11-SHEET79.DGN, \SBCONN-11-SHEET80.DGN, \SBCONN-11-SHEET81.DGN, \SBCONN-11-SHEET82.DGN, \SBCONN-11-SHEET83.DGN, \SBCONN-11-SHEET84.DGN, \SBCONN-11-SHEET85.DGN, \SBCONN-11-SHEET86.DGN, \SBCONN-11-SHEET87.DGN, \SBCONN-11-SHEET88.DGN, \SBCONN-11-SHEET89.DGN, \SBCONN-11-SHEET90.DGN, \SBCONN-11-SHEET91.DGN, \SBCONN-11-SHEET92.DGN, \SBCONN-11-SHEET93.DGN, \SBCONN-11-SHEET94.DGN, \SBCONN-11-SHEET95.DGN, \SBCONN-11-SHEET96.DGN, \SBCONN-11-SHEET97.DGN, \SBCONN-11-SHEET98.DGN, \SBCONN-11-SHEET99.DGN, \SBCONN-11-SHEET100.DGN



MATCH LINE STA. 1687+40
SEE SHEET 73

CONTRACT LIMITS
STA. 55+41.84

STA. 57+00
(BY OTHERS)

FILE NAME =	USER NAME = #USER#	DESIGNED - JB	REVISED -	STATE OF ILLINOIS DEPARTMENT OF TRANSPORTATION PROPOSED RELOCATED IL ROUTE 3 INTERCHANGE	PROPOSED EXCHANGE AVENUE GRADING PLAN STA. 43+00 TO STA. 57+00		F.A.P. RTE. 998	SECTION 82-2-1K	COUNTY ST. CLAIR	TOTAL SHEETS 353	SHEET NO. 75	
#FILE#	PLOT SCALE = #SCALE#	DRAWN - JB	REVISED -		SCALE: 1"=50'	SHEET NO. 4 OF 7 SHEETS	STA. TO STA.	CONTRACT NO. 76E06				
	PLOT DATE = #DATE#	CHECKED - ACL	REVISED -		FED. ROAD DIST. NO. ILLINOIS FED. AID PROJECT							
		DATE - 10/21/11	REVISED -									
TENG & ASSOCIATES, INC. ENGINEERS/ARCHITECTS/PLANNERS CHICAGO, ILLINOIS												