

1-20-2012 LETTING ITEM 156

F.A.U. RTE.	SECTION	COUNTY	TOTAL SHEETS	SHEET NO.
*	82-1-12DM	ST. CLAIR	6	1

* FAU 9214
 D-98-058-08

FOR INDEX OF SHEETS AND STANDARDS SEE SHEET NO. 2

STATE OF ILLINOIS
 DEPARTMENT OF TRANSPORTATION
 DIVISION OF HIGHWAYS
**PROPOSED
 HIGHWAY PLANS**

F.A.U. 9214 (9TH ST.)
 SECTION 82-1-12DM
 DEMO AT BAUGH AVE & 9TH ST
 ST. CLAIR COUNTY
 C-98-022-12



JOINT UTILITY LOCATION
 INFORMATION FOR EXCAVATIONS
 PHONE: (800) 892-0123

STATE OF ILLINOIS
 DEPARTMENT OF TRANSPORTATION
 DIVISION OF HIGHWAYS

SUBMITTED Dec 8th 2011

James J. [Signature]
 DEPUTY DIRECTOR OF HIGHWAY, REGION ENGINEER

December 9 2011
Scott E. Stitt, P.E.
 acting ENGINEER OF DESIGN AND ENVIRONMENT

December 9 2011
William R. Fienler
 interim DIRECTOR OF HIGHWAYS, CHIEF ENGINEER

PRINTED BY THE AUTHORITY
 OF THE STATE OF ILLINOIS

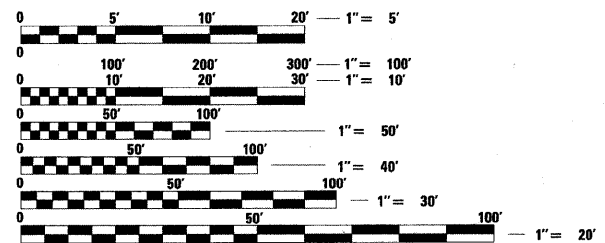


PLOT DATE: *DATE-TIME*

Danny B. Manojlovski 11/30/11
 DANNY B. MANOJLOVSKI DATE
 LICENSE EXPIRES 11/30/2011
 SHEET RANGE 1-5

Oranit Pimsarn 11-30-11
 ORANIT PIMSARN DATE
 LICENSE EXPIRES 11/30/2011
 SHEET RANGE 1-5

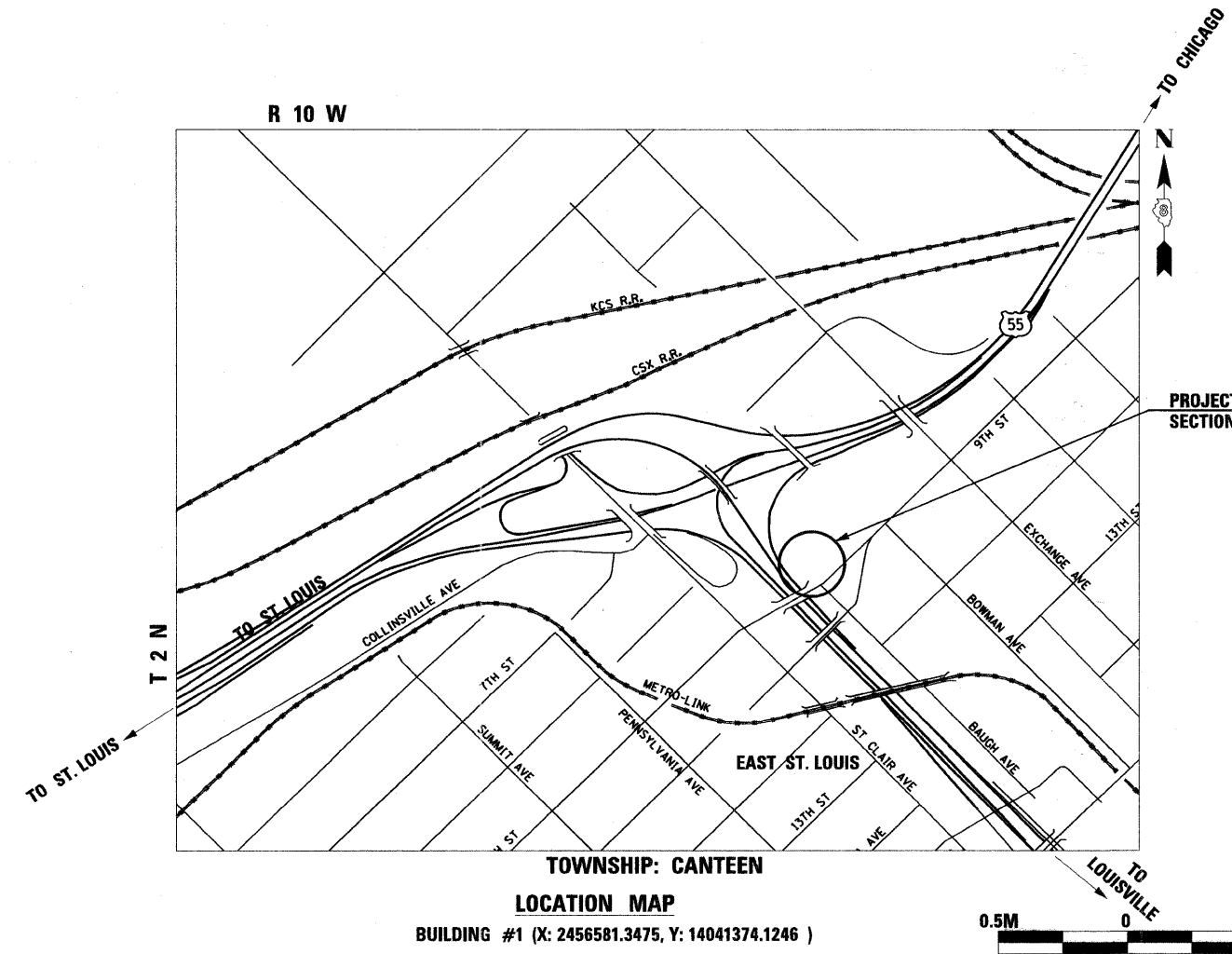
MICROFILMED _____
 REEL NUMBER _____
 AWARDED _____
 RESIDENT ENGINEER _____
 AS BUILT CHANGES WERE MADE
 ON THE FOLLOWING SHEETS



FULL SIZE PLANS HAVE BEEN PREPARED USING STANDARD
 ENGINEERING SCALES. REDUCED SIZED PLANS WILL NOT
 CONFORM TO STANDARD SCALES. IN MAKING MEASUREMENTS
 ON REDUCED PLANS, THE ABOVE SCALES MAY BE USED.

J.U.L.I.E.
 JOINT UTILITY LOCATION INFORMATION FOR EXCAVATION
 1-800-892-0123
 or 811

PROJECT ENGINEER MIKE PRITCHETT
 SQUAD LEADER CHAD SANDERS
 CONTRACT NO. 76F30



TOWNSHIP: CANTEEN
 LOCATION MAP
 BUILDING #1 (X: 2456581.3475, Y: 14041374.1246)



DN-SPEC
 DATE-TIME
 REF-REF-REF

INDEX OF SHEETS

- 1 COVER SHEET
- 2 INDEX OF SHEETS, HIGHWAY STANDARD AND GENERAL NOTES
- 3 SUMMARY AND SCHEDULE OF QUANTITIES
- 4 DETAILED LOCATION MAP AND BUILDING REMOVAL KEY
- 5 PARCEL AND REMOVAL DETAILS
- 6 UTILITY LOCATION PLAN

HIGHWAY STANDARDS

STANDARD NO.	DESCRIPTION
000001-06	STANDARD SYMBOLS, ABBREVIATIONS AND PATTERNS
001006	DECIMAL OF AN INCH AN OF A FOOT
280001-06	TEMPORARY EROSION CONTROL SYSTEMS
701001-02	OFF-RD OPERATIONS, 2L, 2W, MORE THAN 15' (4.5 m) AWAY
701006-03	OFF-RD OPERATIONS, 2L, 2W, 15' (4.5 m) TO 24" (600 mm) FROM EDGE OF PAVEMENT
701801-05	SIDEWALK, CORNER OR CROSSWALK CLOSURE
701901-02	TRAFFIC CONTROL DEVICES

GENERAL NOTES

1. ILLINOIS STATE LAW REQUIRES A 48-HOUR NOTICE TO BE GIVEN TO UTILITIES BEFORE DIGGING. FIELD MARKING OF FACILITIES MAY BE OBTAINED BY CONTACTING J.U.L.I.E., OR FOR NON-MEMBERS, THE UTILITY COMPANY DIRECTLY. AGENCIES KNOWN TO HAVE FACILITIES WITHIN THE PROJECT AREA ARE AS FOLLOWS :
 - AMEREN CIPS (ELECTRIC)
 - AMEREN IP (GAS)
 - AT&T ILLINOIS (COMMUNICATIONS)
 - CITY OF EAST ST. LOUIS (SAN. SEWER)
 - ILLINOIS AMERICAN WATER CO. (WATER)
 - METRO (COMMUNICATIONS)
 - PAETEC (COMMUNICATIONS)
 - QWEST SOLUTIONS CENTER (COMMUNICATIONS)

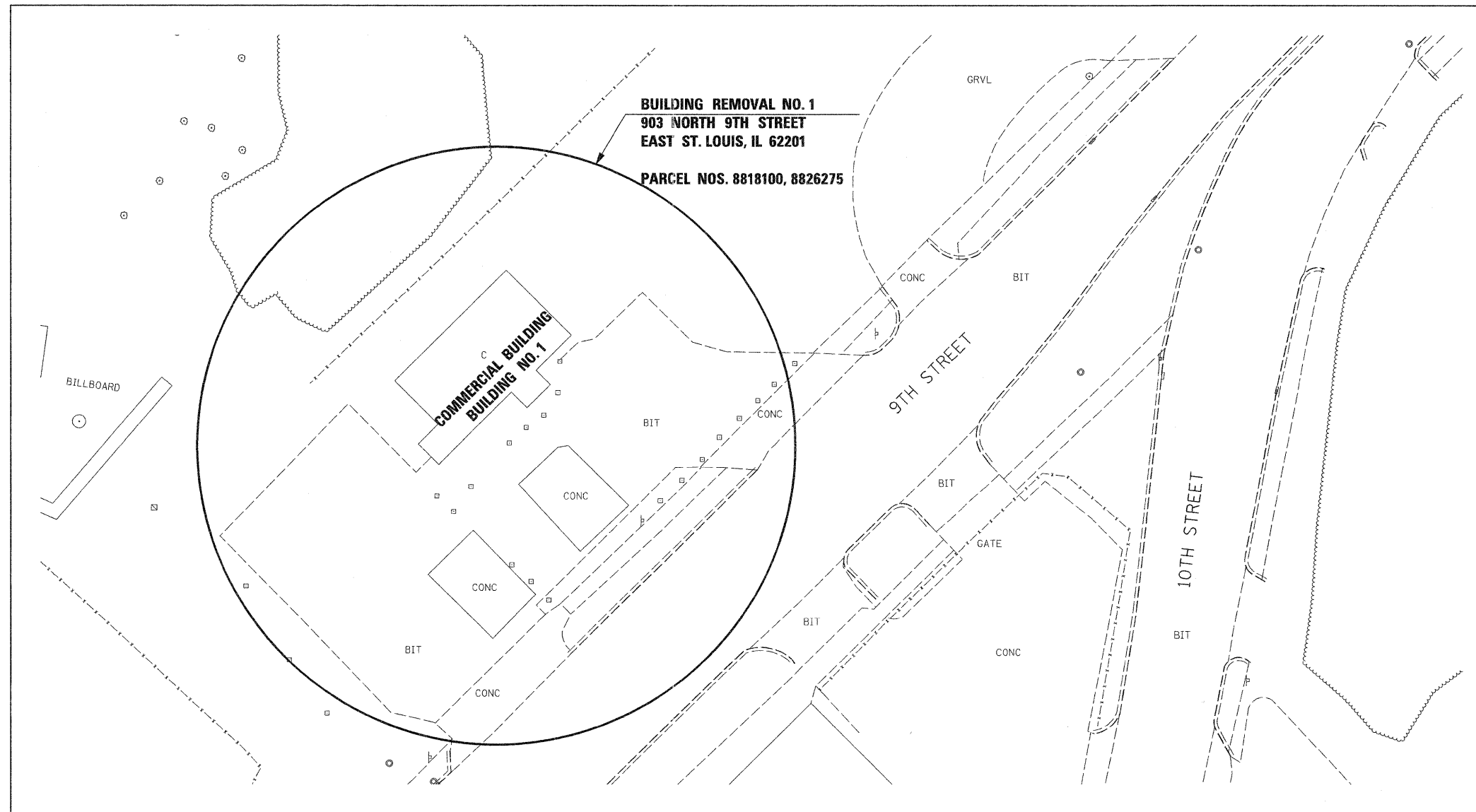
MEMBERS OF J.U.L.I.E. (800) 892-0123 ARE INDICATED BY * .
NON-J.U.L.I.E. MEMBERS MUST BE NOTIFIED INDIVIDUALLY.
2. DURING THE BUILDING REMOVAL, NO SOIL SHALL BE DISTURBED DURING THE REMOVAL PROCESS. ALL REMOVAL OPERATIONS SHALL BE CONFINED TO AREAS WITH CONCRETE OR BITUMINOUS SURFACE TREATMENTS.
3. THE PERIMETER EROSION BARRIER IS TO BE PLACED AROUND PERIMETER OF EACH LOCATION AT THE DIRECTION OF THE RESIDENT ENGINEER.
4. THE CONTRACTOR WILL BE RESPONSIBLE FOR MAINTAINING ENTRANCES/ EXITS TO EACH SITE, AS WELL AS CLEANING OF THE ROADS LEADING TO SAID ENTRANCES/ EXITS TO EACH LOCATION. NO COMPENSATION WILL BE MADE FOR THIS WORK.
5. THE BUILDING FOOTING/BASEMENT SHALL BE FILLED BACK TO EXISTING GRADE WITH ACCEPTABLE FILL ACCORDING TO STANDARD SPECIFICATION ARTICLE 205.06. THIS COST IS TO BE INCLUDED IN THE BUILDING REMOVAL OF THAT NUMBER AND NO ADDITIONAL COMPENSATION WILL BE MADE.
6. ALL "STATE PROPERTY" SIGNS SHALL BE REMOVED AND RETURNED TO THE MRB COMPLEX, ATTENTION TO CHAD SANDERS.

FILE NAME = D8TRI-76F30-shr-gennote.dgn	USER NAME = pmsarno	DESIGNED OP	REVISED -	STATE OF ILLINOIS DEPARTMENT OF TRANSPORTATION	INDEX OF SHEETS, HIGHWAY STANDARD AND GENERAL NOTES	F.A.U. RTE.	SECTION	COUNTY	TOTAL SHEETS	SHEET NO.
	PLOT SCALE = 2.0000' / in.	CHECKED DBM	REVISED -			9214	82-1-12DM	ST. CLAIR	6	2
PLOT DATE = 11/30/2011	DATE 11-30-11	REVISED -	SCALE: NONE SHEET NO. 1 OF 1 SHEETS STA. TO STA.		FED. ROAD DIST. NO. ILLINOIS FED. AID PROJECT CONTRACT NO. 76F30					

DETAILED LOCATION MAP

EAST ST. LOUIS, ILLINOIS

SCALE: NONE



BUILDING REMOVAL KEY

BUILDING NO.	PARCEL NO.	DESCRIPTION
1	8818100, 8826275	1,282 SQ. FT. COMMERCIAL BUILDING WITH A BUILT-UP ROOF. THE WALLS ARE DRYWALL WITH JOINT COMPOUND THROUGHOUT. THE FLOORS CONSIST OF 12" X 12" BLACK VINYL ON THE DANCE FLOOR AND 12" X 12" WHITE VINYL FLOOR TILE/MASTIC IN THE MAIN BAR AREA, ENTRANCE AND RESTROOM. THE CEILINGS ARE TILED IN WITH 2'X4' LAY-IN CEILING TILES THROUGHOUT. THE COLUMNS CONTAIN MIRROR MASTIC.

FILE NAME = DBTRI-76F30-Rem-01.dgn

USER NAME = pimsarno

DESIGNED OP

REVISED -

DRAWN OP

REVISED -

PLOT SCALE = 40.0000' / 1"

CHECKED DBM

REVISED -

PLOT DATE = 11/29/2011

DATE 11-30-11

REVISED -

**STATE OF ILLINOIS
DEPARTMENT OF TRANSPORTATION**

**DETAILED LOCATION MAP AND
BUILDING REMOVAL KEY**

SCALE: NONE

SHEET NO. 1 OF 1 SHEETS

STA. TO STA.

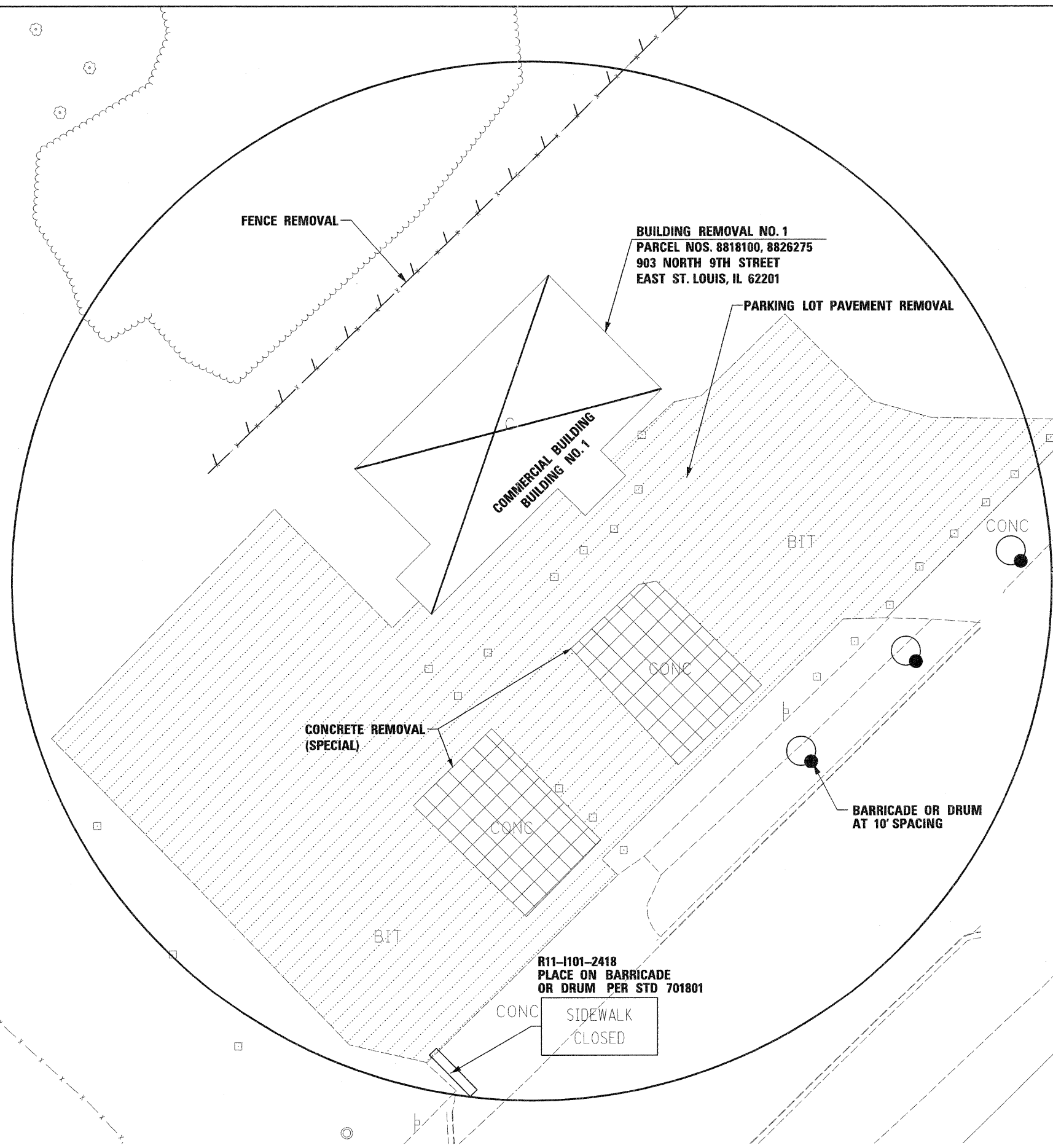
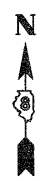
F.A.U. RTE. 9214

SECTION 82-1-12DM

COUNTY ST. CLAIR

TOTAL SHEETS 6 SHEET NO. 4

FED. ROAD DIST. NO. ILLINOIS FED. AID PROJECT CONTRACT NO. 76F30



BUILDING REMOVAL NO. 1
 PARCEL NOS. 8818100, 8826275
 903 NORTH 9TH STREET
 EAST ST. LOUIS, IL 62201

SIDEWALK CLOSED
 R11-1101-2418
 PLACE ON BARRICADE
 OR DRUM PER STD 701801

* R11-1102-2430
SIDEWALK CLOSED
 USE OTHER SIDE
 PLACE ON DETECTABLE
 PEDESTRIAN CHANNELIZING
 BARRICADE PER STD 701801

* W20-1(0)-48
ROAD WORK AHEAD
 ADVANCE WARNING SIGN
 PLACE PER STD 701801

- LEGENDS:**
- PARKING LOT PAVEMENT REMOVAL**
 - CONCRETE REMOVAL (SPECIAL)**

NOTES:
 1. BOLLARDS, SIGNS, SIGN POSTS & FOUNDATIONS, LIGHTING & POSTS REMOVAL WILL BE INCLUDED IN THE COST OF BUILDING REMOVAL NO. 1.

FILE NAME =	USER NAME = pimsarno
DBTRI-76F30-Rem-02.dgn	

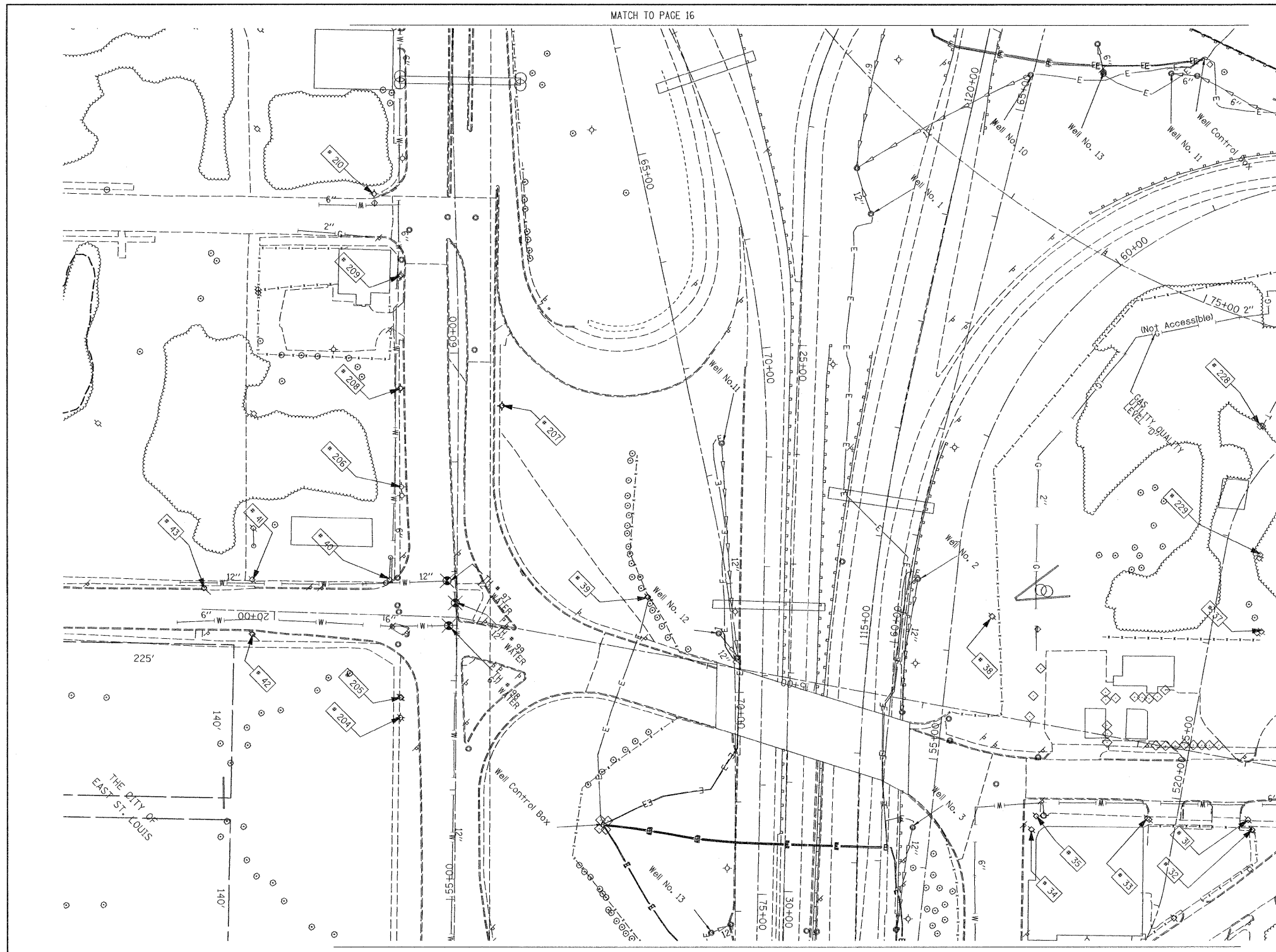
DESIGNED	OP	REVISED	-
DRAWN	OP	REVISED	-
CHECKED	DBM	REVISED	-
DATE	11-30-11	REVISED	-

DESIGNED	OP	REVISED	-
DRAWN	OP	REVISED	-
CHECKED	DBM	REVISED	-
DATE	11-30-11	REVISED	-

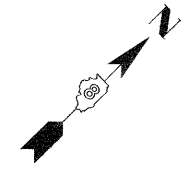
**STATE OF ILLINOIS
 DEPARTMENT OF TRANSPORTATION**

PARCEL AND REMOVAL DETAILS			
SCALE: NONE	SHEET NO. 1 OF 1 SHEETS	STA.	TO STA.

F.A.U. RTE.	SECTION	COUNTY	TOTAL SHEETS	SHEET NO.
9214	82-1-12DM	ST. CLAIR	6	5
FED. ROAD DIST. NO.			ILLINOIS FED. AID PROJECT	
CONTRACT NO. 76F30				



TBE Pole Number	Approximate Location	Identification # on Pole	Utilities Attached to Poles	Utility Owners	Notes: Additional Items Attached to Poles
31	276' W OF BOWMAN & 9TH ST. 05' SOUTH OF CURB	18979 21 1107 755	ELECTRIC, FIBER OPTIC, CATV, TELEPHONE	AMEREN ELECTRIC, AT&T	LIGHT
32	273' WEST OF BOWMAN & 9TH ST.	NO TAG	NO UTILITIES		ABANDONED POLE
33	168' WEST OF BOWMAN & 9TH ST. 135' SOUTH OF CURB	18980	ELECTRIC	AMEREN ELECTRIC	TRANSFORMER & LIGHT / 3 GUY S TO WEST
34	SE CORNER OF BAUGH & 9TH 105' SOUTH OF CURB	727525	ELECTRIC SERVICE	AMEREN ELECTRIC	ELECTRIC SERVICE POLE 2 LIGHTS
35	SE CORNER OF BAUGH & 9TH 130' SOUTH OF CURB	727526	ELECTRIC SERVICE	AMEREN ELECTRIC	ELECTRIC SERVICE POLE METER
37	276' W OF BOWMAN & 9TH ST.	18977 27253	ELECTRIC, TELEPHONE	AMEREN ELECTRIC, AT&T	
38	WEST SIDE OF EAST ROW HIGHWAY BETWEEN POLE 27253	18976	ELECTRIC	AMEREN ELECTRIC	TRANSFORMER
39	NORTH OF CURB 43' WEST OF HWY 64	18975	ELECTRIC	AMEREN ELECTRIC	TRANSFORMER, ELECTRIC DROP
40	NW OF 9TH & ST. CLAIR AVE.	18974	ELECTRIC	AMEREN ELECTRIC	GUY TO NORTH
41	NE CORNER OF ALLEY AT 9TH ST. 171' W OF ST. CLAIR & 9TH	18971	ELECTRIC	AMEREN ELECTRIC	2 GUYS TO SOUTH
42	171' WEST OF ST. CLAIR & 9TH	18973	NO UTILITIES		METAL STRIAN POLE, 2 GUY TO S HOLDING POLE 41
43	216' WEST OF ST. CLAIR & 9TH	18972	NO UTILITIES		METAL STRIAN POLE, 2 GUY TO S HOLDING POLE 41
204	SW CORNER OF 9TH ST. & ST. CLAIR	727976	ELECTRIC SERVICE	AMEREN ELECTRIC	LIGHT
205	SW CORNER OF 9TH ST. & ST. CLAIR	727977	ELECTRIC SERVICE	AMEREN ELECTRIC	METER
206	130' CL OF 9TH ST. & ST. CLAIR	727972	ELECTRIC SERVICE	AMEREN ELECTRIC	LIGHT
207	198' CL OF 9TH ST. & ST. CLAIR	727975	ELECTRIC SERVICE	AMEREN ELECTRIC	LIGHT
208	219' CL OF 9TH ST. & ST. CLAIR	727773	ELECTRIC SERVICE	AMEREN ELECTRIC	LIGHT
209	323' CL OF 9TH ST. & ST. CLAIR	727974	ELECTRIC SERVICE	AMEREN ELECTRIC	LIGHT, END OF ELECTRIC SERVICE
210	SW CORNER OF 8TH ST. & ST. CLAIR	729299	ELECTRIC SERVICE	AMEREN ELECTRIC	LIGHT
228	SOUTHEAST OF POLE #227	2475484	ELECTRIC, TELEPHONE	AMEREN ELECTRIC, AT&T	TRANSFORMER, TELEPHONE DROP
229	S.E. OF POLE #228	727528	ELECTRIC SERVICE	AMEREN ELECTRIC	



UNKNOWN	UNKNOWN SANITARY
ABANDONED SANITARY	FORCE MAIN
FORCE MAIN (OL "D")	CABLE TV
CABLE TV	TELEPHONE
TELEPHONE	GAS (OL "D")
GAS (OL "D")	ELECTRIC
ELECTRIC	WATER
WATER	WATER (OL "D")
WATER (OL "D")	FIBER OPTIC
FIBER OPTIC	FIBER OPTIC (OL "D")
FIBER OPTIC (OL "D")	WELL DRAINAGE
WELL DRAINAGE	UTILITY POLE
UTILITY POLE	TBE TEST HOLE
TBE TEST HOLE	

Utilities shown in color on these plans as depicted in the legend have been investigated by TBE Group, Inc in accordance with SUE Industry Standards. All other information shown has been provided to TBE Group, Inc by others. TBE's SUE field investigation was finished on 5/22/09. Changes to utilities after this date may have been made and therefore may result in variances from this plan. Consideration should be given to updating this plan if deemed advisable prior to final design and construction.

ALL UTILITIES SHOWN QUALITY LEVEL "B" UNLESS NOTED OTHERWISE.

- Utility Quality Level "A" : Test Hole
- Utility Quality Level "B" : Designating
- Utility Quality Level "C" : Research with Survey
- Utility Quality Level "D" : Records Research

TBE GROUP, INC.
 CIVIL ENGINEERING • TRANSPORTATION • ENVIRONMENTAL
 PLANNING • UTILITY ENGINEERING/LOCATING

Checked By: _____
 Date: _____

TBE Job No. 1109500601-602,603,604, 607,608,609
 SUE Plan Pages: 17 of 35

FILE NAME =	USER NAME =	DESIGNED EG, IP, LP	REVISED
#FILE#		DRAWN KLC	7/28/09 - 8/26/09 ADDED TEST HOLES *60-108
	PLOT SCALE = 1" = 50'	CHECKED JB	REVISED
	PLOT DATE = #DATE#	DATE 9/15/09	REVISED

STATE OF ILLINOIS
DEPARTMENT OF TRANSPORTATION

Mississippi River Bridge Project

F.A. RTE.	SECTION	COUNTY	TOTAL SHEETS	SHEET NO.
		St. Clair	6	6
PTB NO. 147-038				
FED. ROAD DIST. NO. [ILLINOIS] Job No. D-98-061-08				

SCALE: SHEET NO. STA. TO STA.